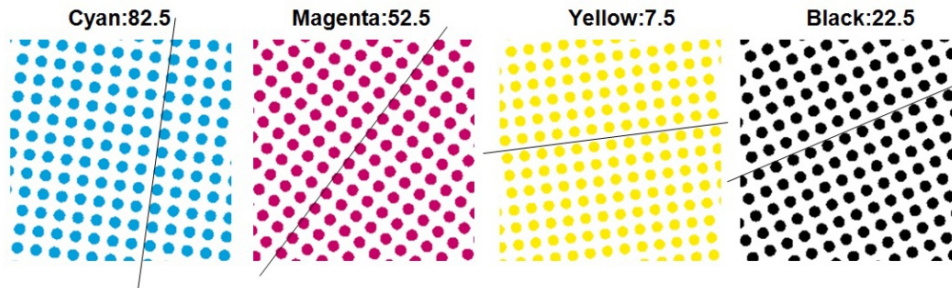


What is New

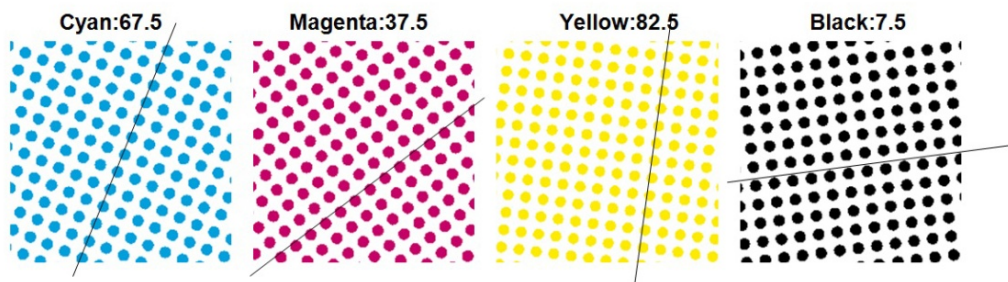
1. Add some new functions

a. Support FlexoRound screening

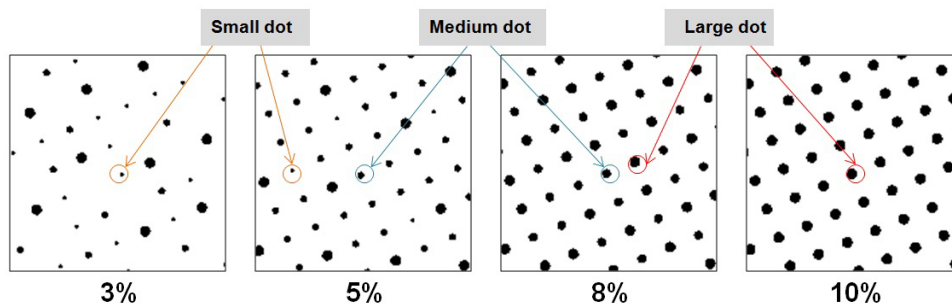
- **Pure Round 1**



- **Pure Round 2**

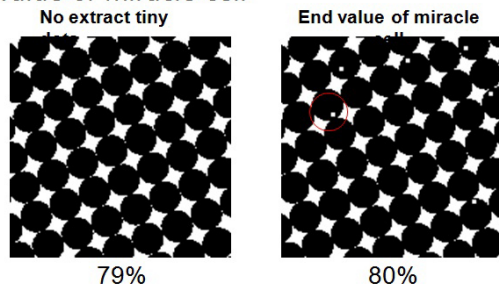


b. Support optional FlexoRound Balance screening

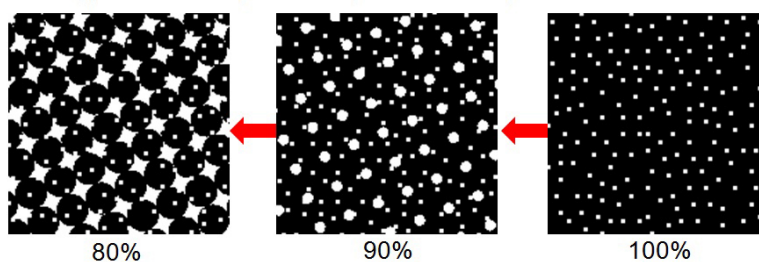


c. Support optional Miracle Cell technology

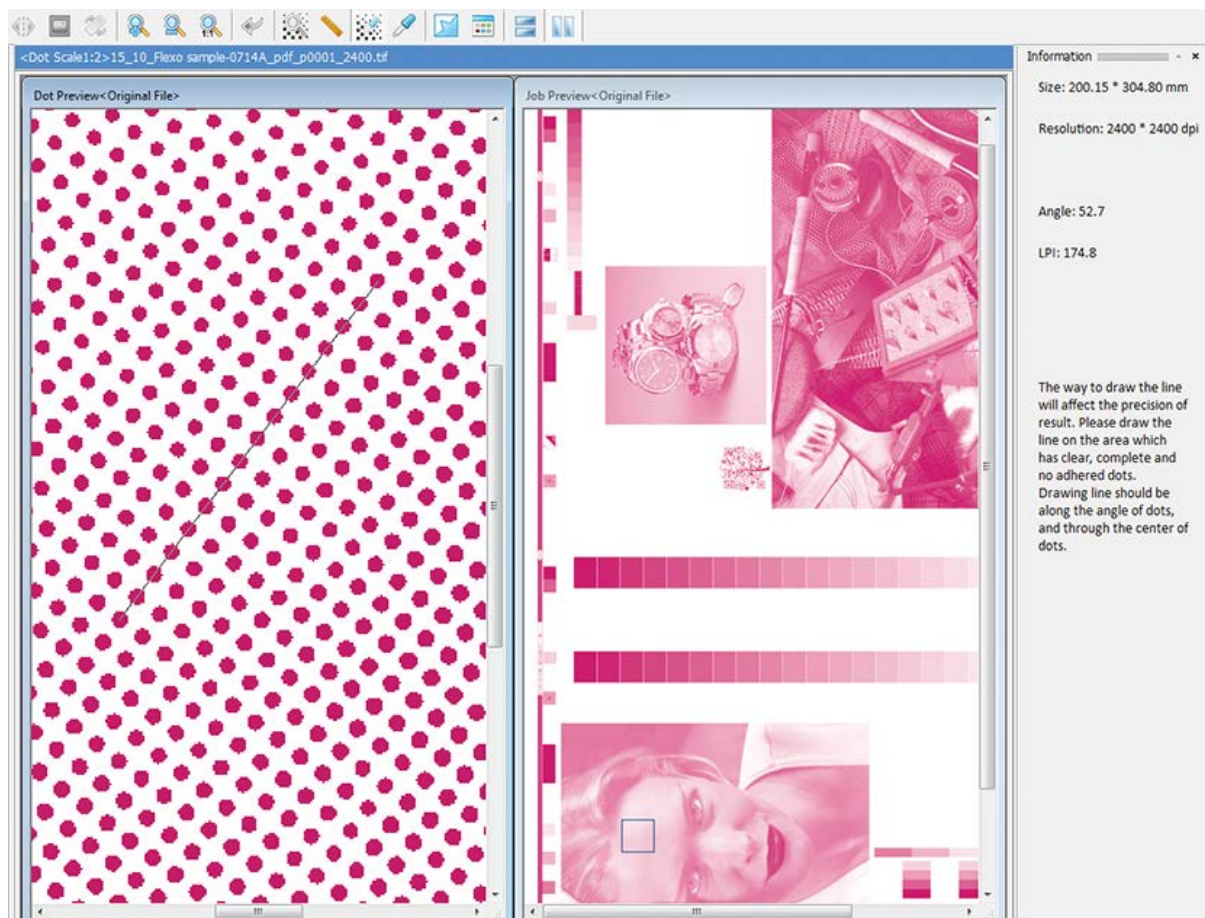
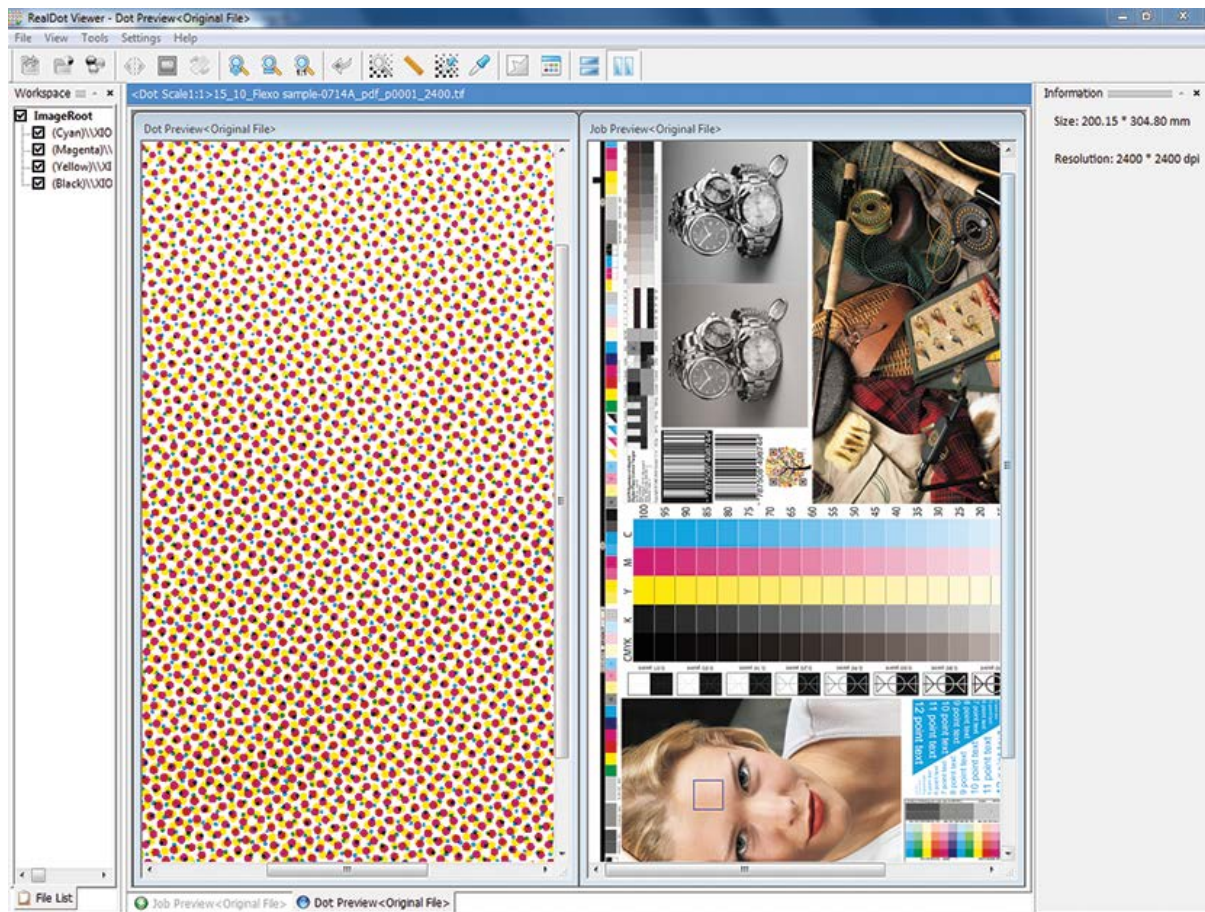
- End value of miracle cell



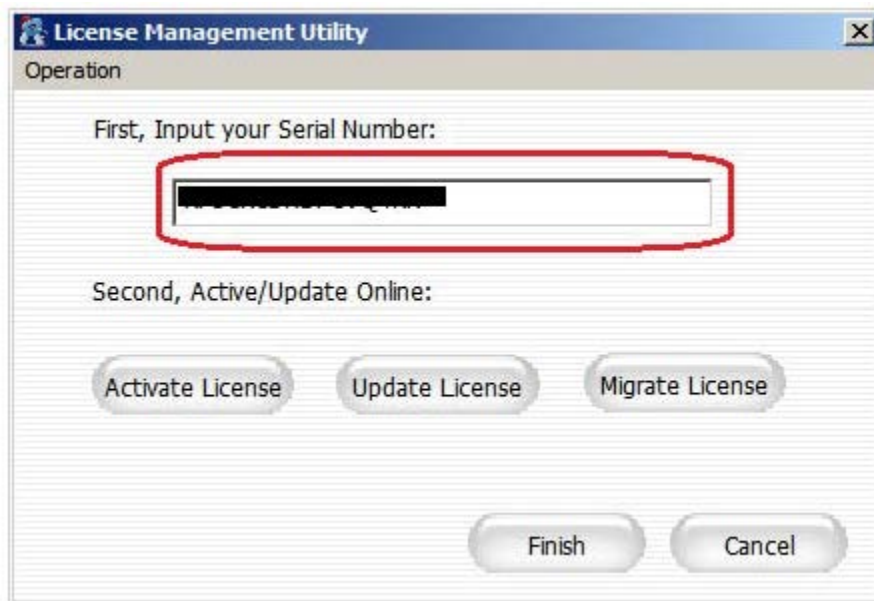
- Miracle cell type sets to single, density of extract tiny dots is fixed



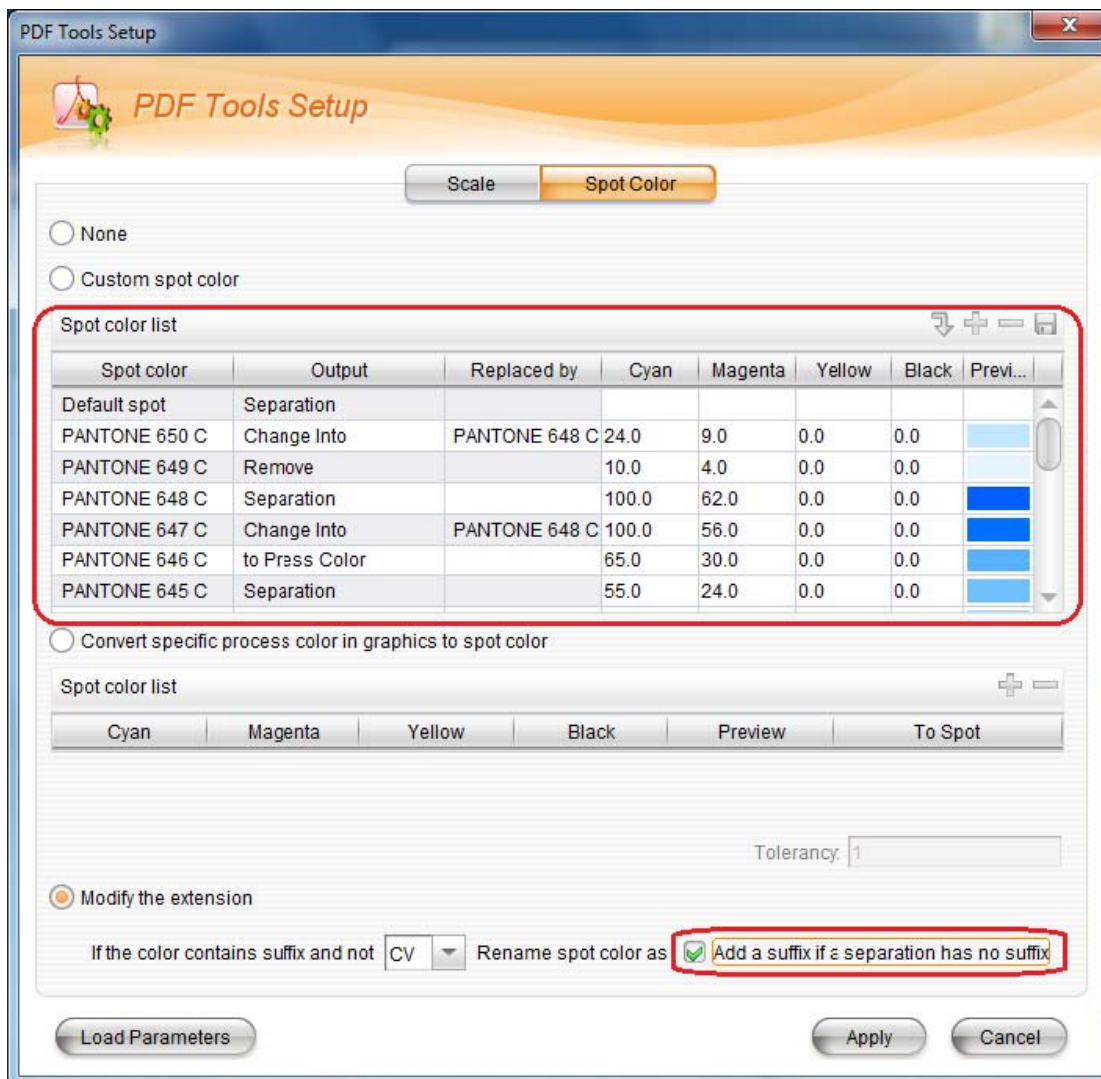
d. Support RealDot viewing tool



2. Use network license instead of physical dongle

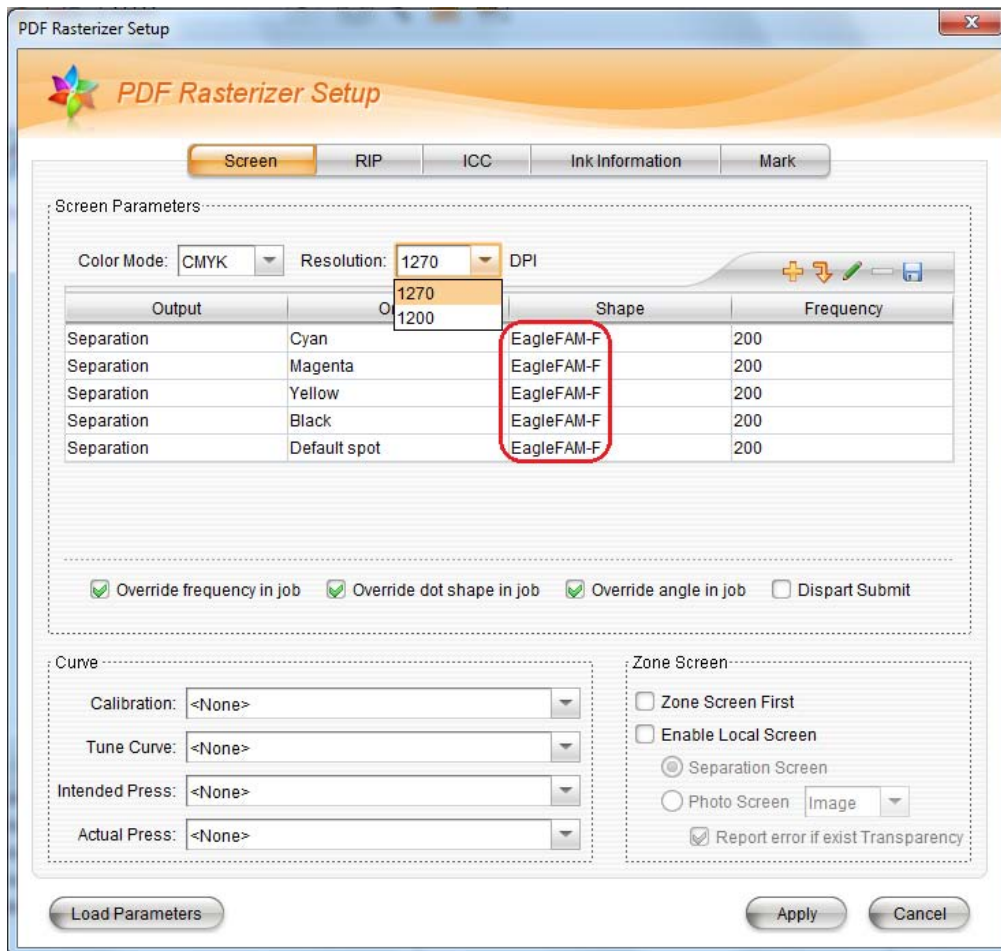


3. Add PDF Spot color management (Separation Remapping)

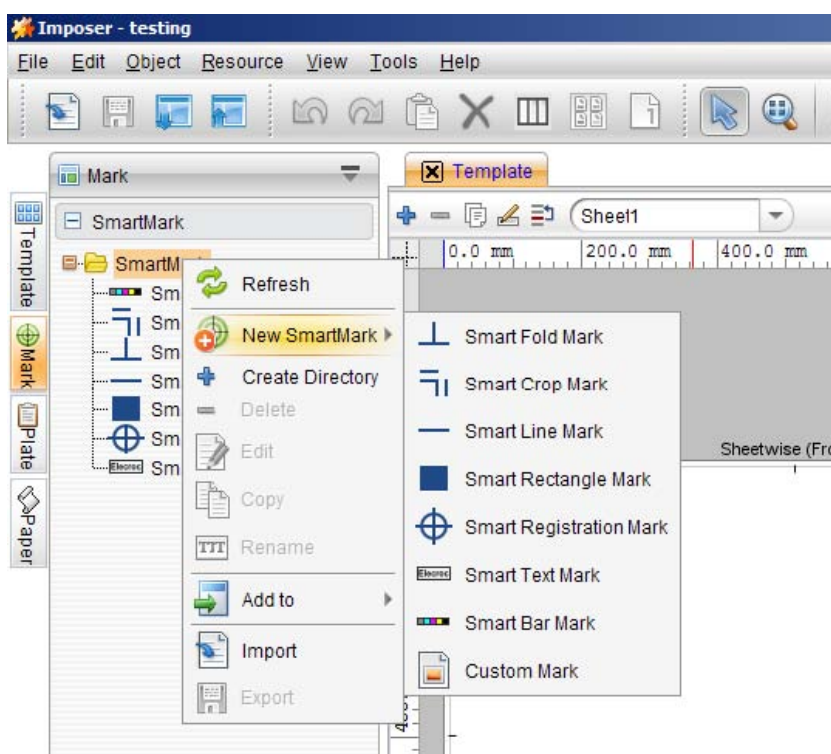


4. Add EagleFAM-F screening in PDF Rasterizer

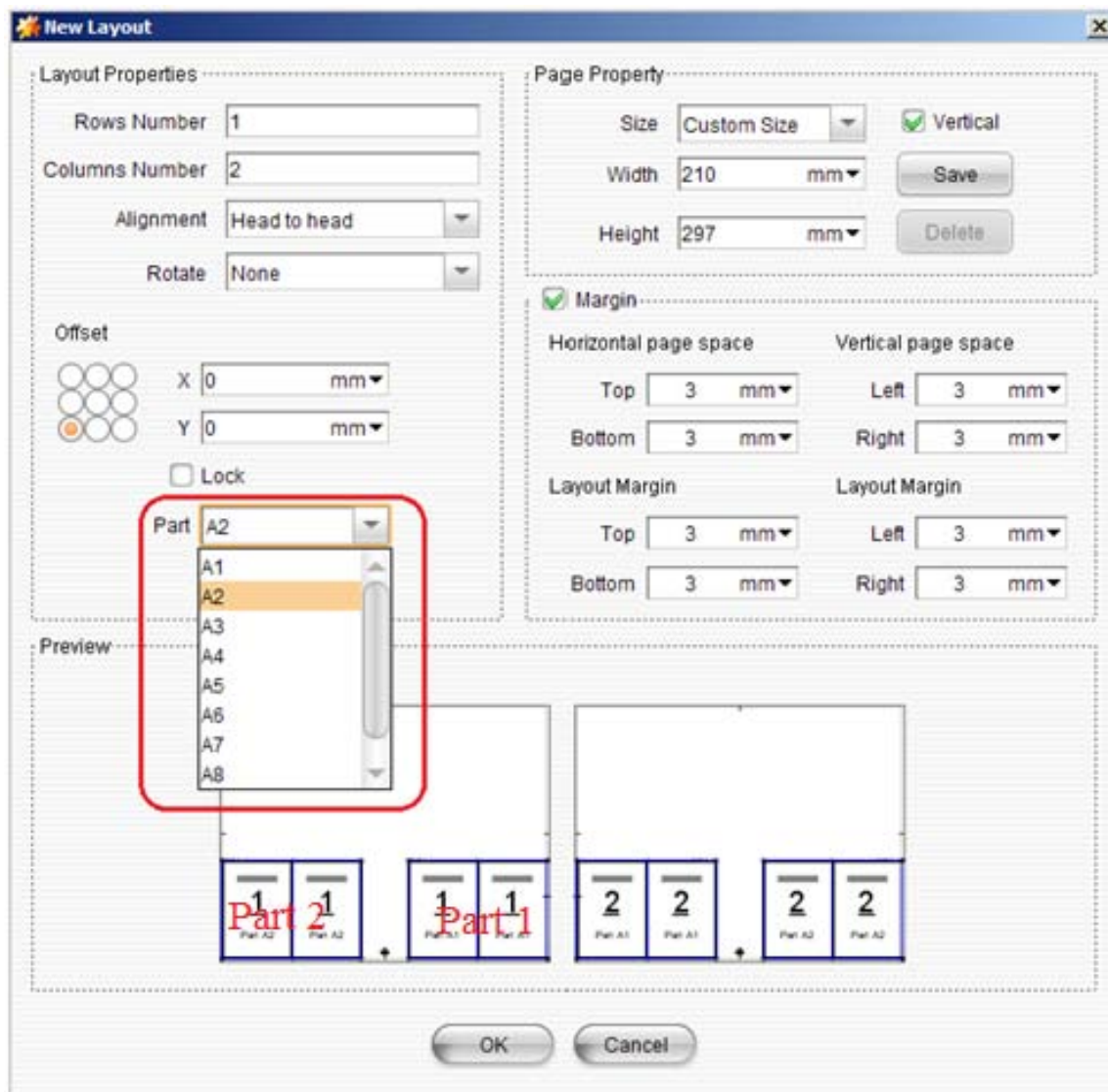
EagleFAM-F used for newspaper printing, it is based on FM/AM hybrid screening, and only used by the device resolution at 1270dpi & 1200dpi. With these devices, the newspaper can reach higher frequency, such as 200 lpi.



5. Smart marks in Imposer



6. Add multi-parts imposition

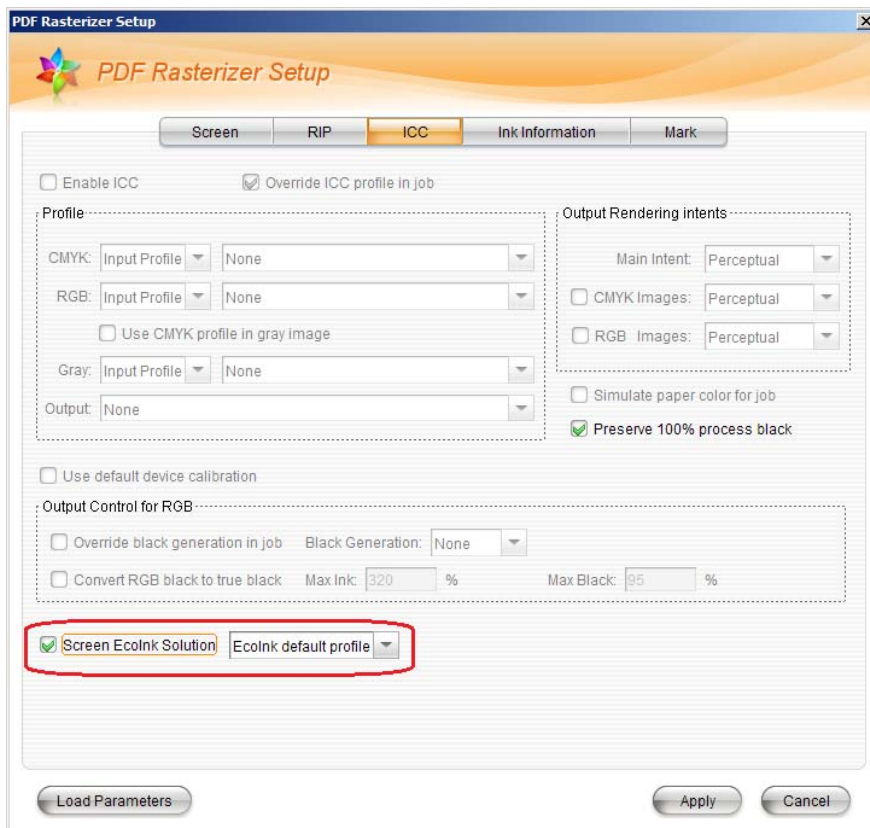


7. New color calibration wizard

The new color tools can be installed on any pc client, it includes new color calibration wizard, p rinter recalibration, spot color and delta E tools.

8. Screen EcoInk with ink amount report

EcoInk here is a screen level ink saving. It is higher efficiency than EcoInk module.



The image shows the 'PDF Rasterizer Setup' dialog box with the 'ICC' tab selected. The 'Screen' tab is also visible. The 'ICC' tab contains the following settings:

- ☐ Enable ICC
- ☒ Override ICC profile in job
- Profile:**
 - CMYK: Input Profile (dropdown), None (dropdown)
 - RGB: Input Profile (dropdown), None (dropdown)
 - ☐ Use CMYK profile in gray image
 - Gray: Input Profile (dropdown), None (dropdown)
 - Output: None (dropdown)
- Output Rendering intents:**
 - Main Intent: Perceptual (dropdown)
 - ☐ CMYK Images: Perceptual (dropdown)
 - ☐ RGB Images: Perceptual (dropdown)
 - ☐ Simulate paper color for job
 - ☒ Preserve 100% process black
- ☐ Use default device calibration
- Output Control for RGB:**
 - ☐ Override black generation in job Black Generation: None (dropdown)
 - ☐ Convert RGB black to true black Max Ink: 320 % Max Black: 95 %
- ☒ Screen EcoInk Solution EcoInk default profile (dropdown)

Buttons at the bottom: Load Parameters, Apply, Cancel.

