



FOUNDER 方正

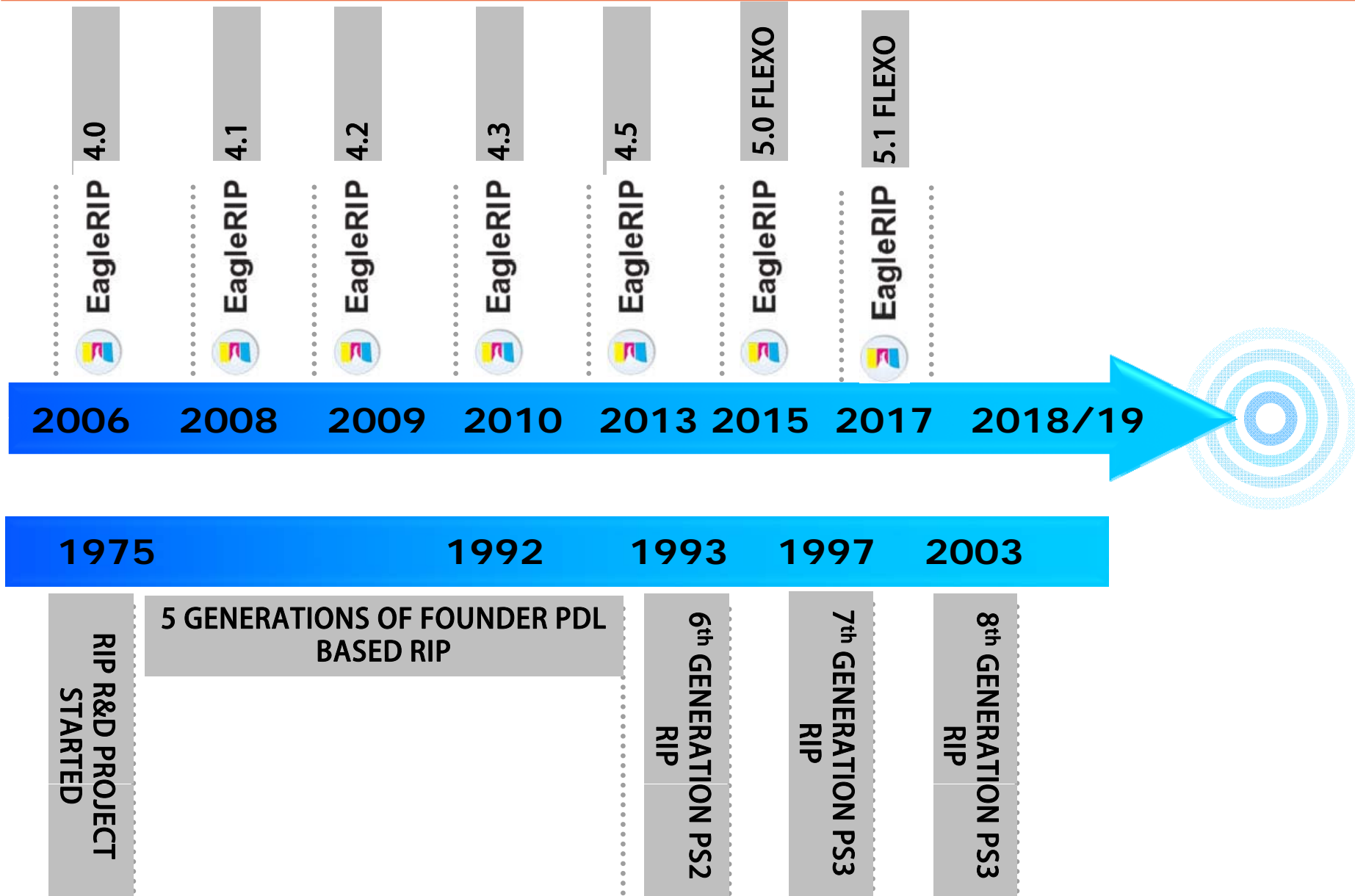
正 在 你 身 边

EagleRIP Flexo 5

- Milestones
- Facts & Figures
- Key Features
- System Requirements
- Packs and Configuration

Milestones

FOUNDER 方正



- Impressive price/performance
- 25,000+ installations globally
- Proven technology and reliable performance
- SDK (Software Developer's Kit) available for OEM developers
- SDK supports cross-platform kernel: PC, Mac, Linux & UNIX

EagleRIP Flexo



EagleRIP

- PostScript 3/PDF 1.7
- 1-bit TIFF export
- Tiffflow plugin for 1-bit TIFF Post-RIP imposition workflow solution
- Powerful Ganging & Preview
- More than 10 offset printing dot shapes screenings
- Cloud licensing authorization



Functions and Figures
for Flexo printing

- FlexoRound Screening
- FlexoRound Balance Screening
- Miracle Cell Technology
- RealDot Viewer

EagleRIP

- PostScript 3 and PDF 1.7 RIP interpreter
- 1-bit/8-bit TIFF output
- TIFFlow support
- More than 10 offset printing dot shapes
 - EagleFAM (FM & AM hybrid screening)
 - EagleFM (2nd order FM screening)
 - EagleAM-F (high frequency screening for newspaper)
 - EagleAGS (gravure printing screenings)

Flexo Features

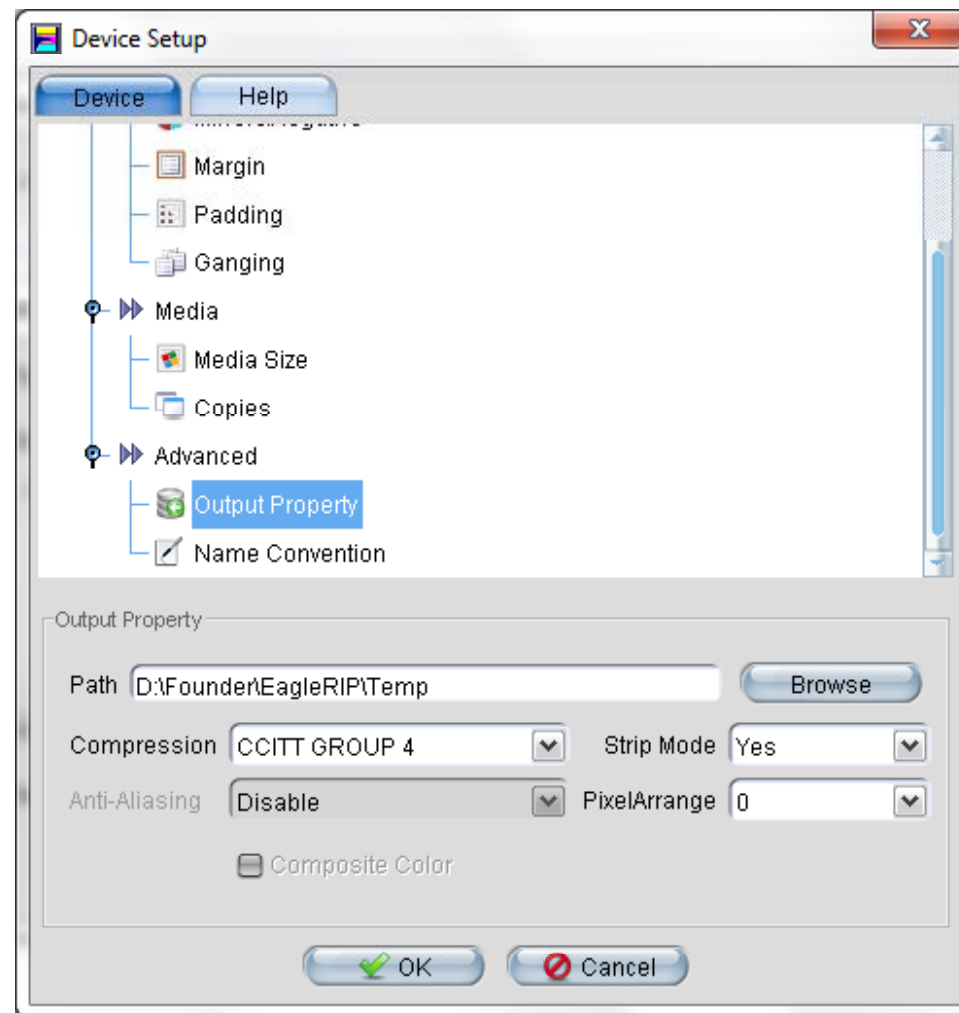
- FlexoRound Screening (pure round screening)
- FlexoRound Balance Screening (adopt different dot sizes on highlight)
- Miracle Cell (increase ink density on shadow)
- RealDot Viewer (ensure screening dot quality)
- Powerful Ganging (highly efficient to save media)

Enhanced PDF interpretation

- Founder's latest RIP technology with the native PDF interpreter which interprets PDF file directly
- Support PDF 1.7 features including
 - transparency, embedded ICC Profiles, 128-bit encryption, JPEG2000 filter and more
- Improved compatibility of PDF file processing

1-bit TIFF output

- EagleRIP Flexo provides standard 1-bit TIFF output which is accepted by most TIFF downloader software



Powerful preview

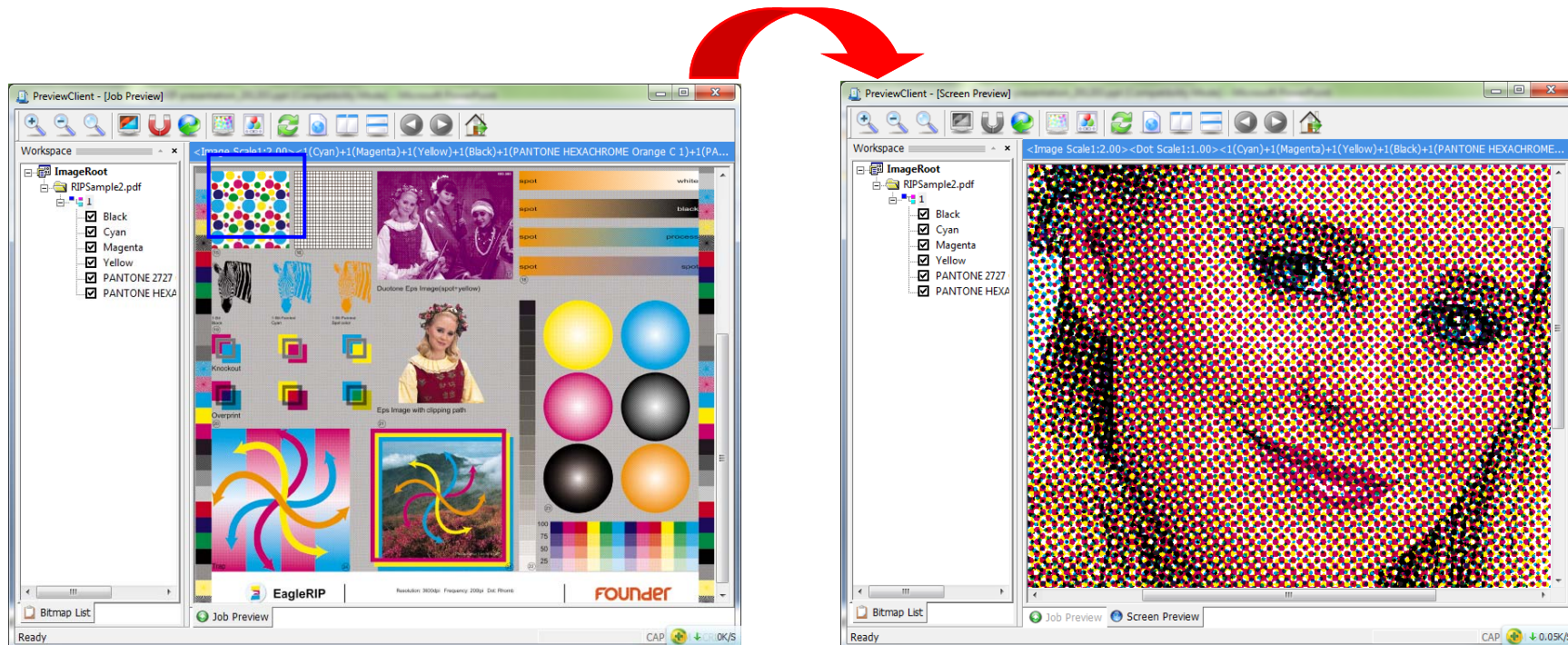
- Easy switch from separate to composite



Powerful preview

- Navigating preview

- Selectable area on the page under navigation mode to preview the dot

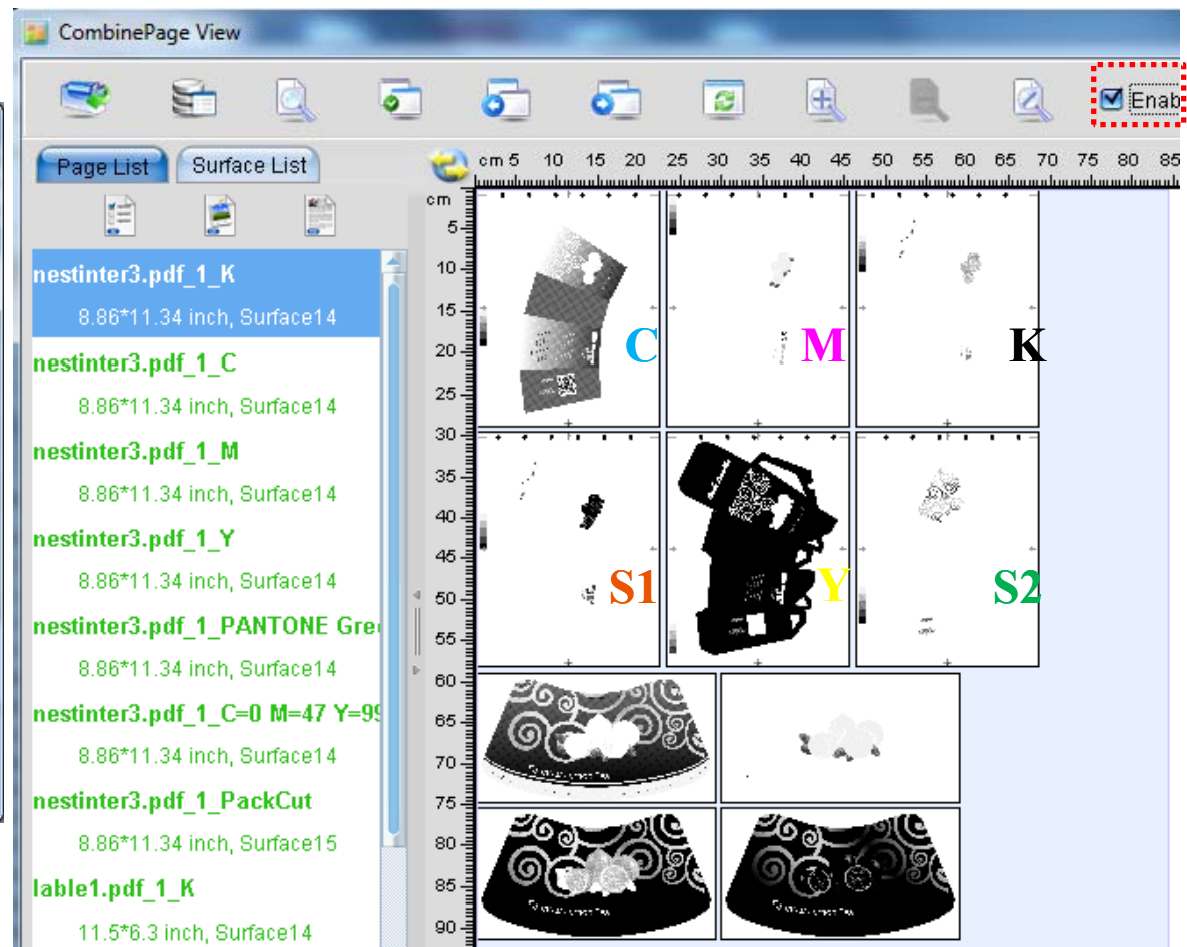
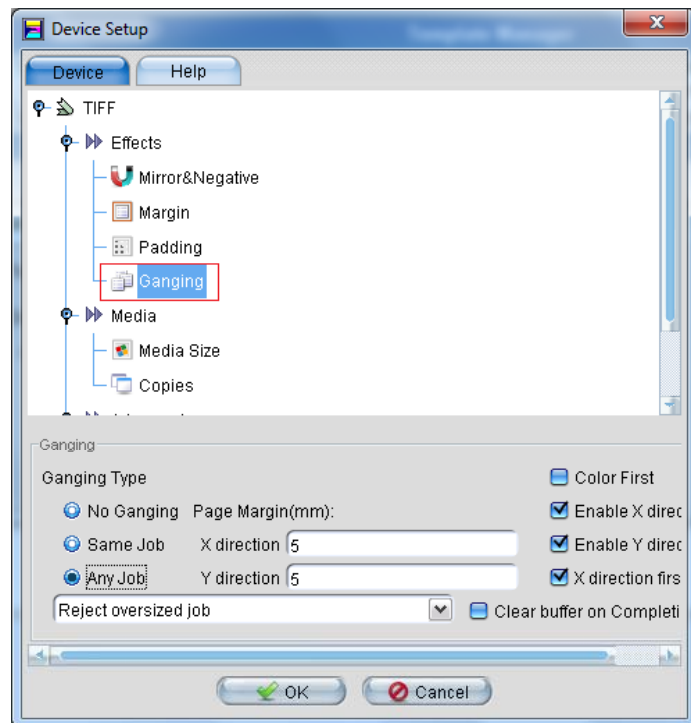


- **Automatic Ganging**
- **Flexible Manual Ganging**
 - Crop and Overlap
- **1-Bit TIFF Post-RIP Ganging**

Automatic Ganging

FOUNDER 方正

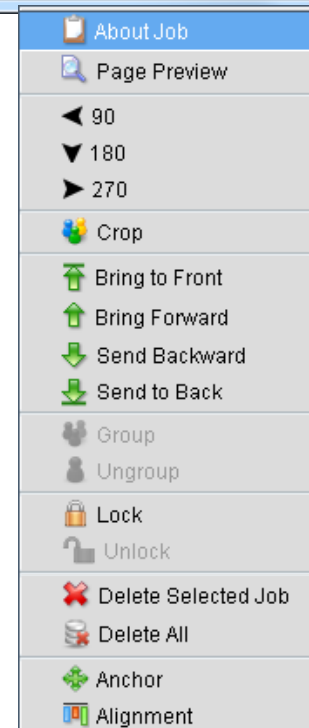
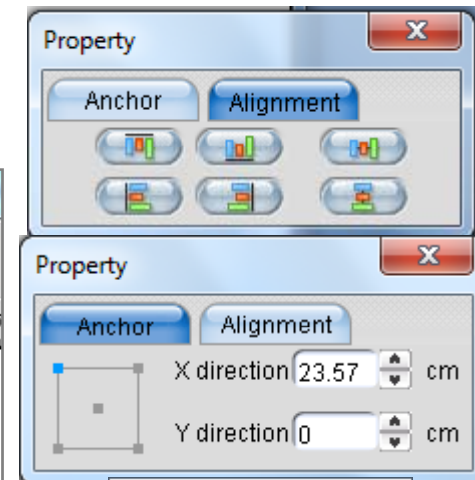
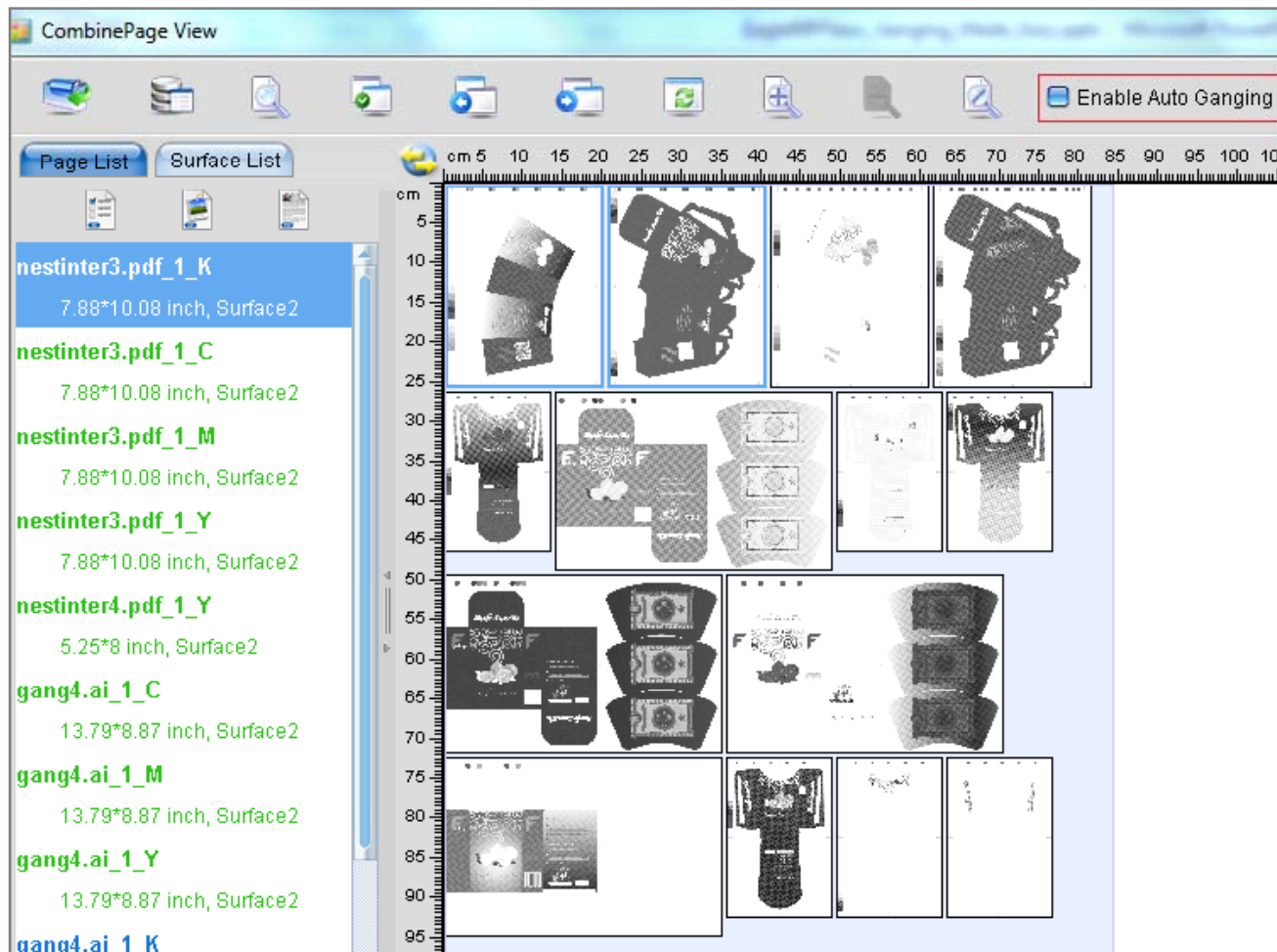
More faster



Manual Ganging

FOUNDER 方正

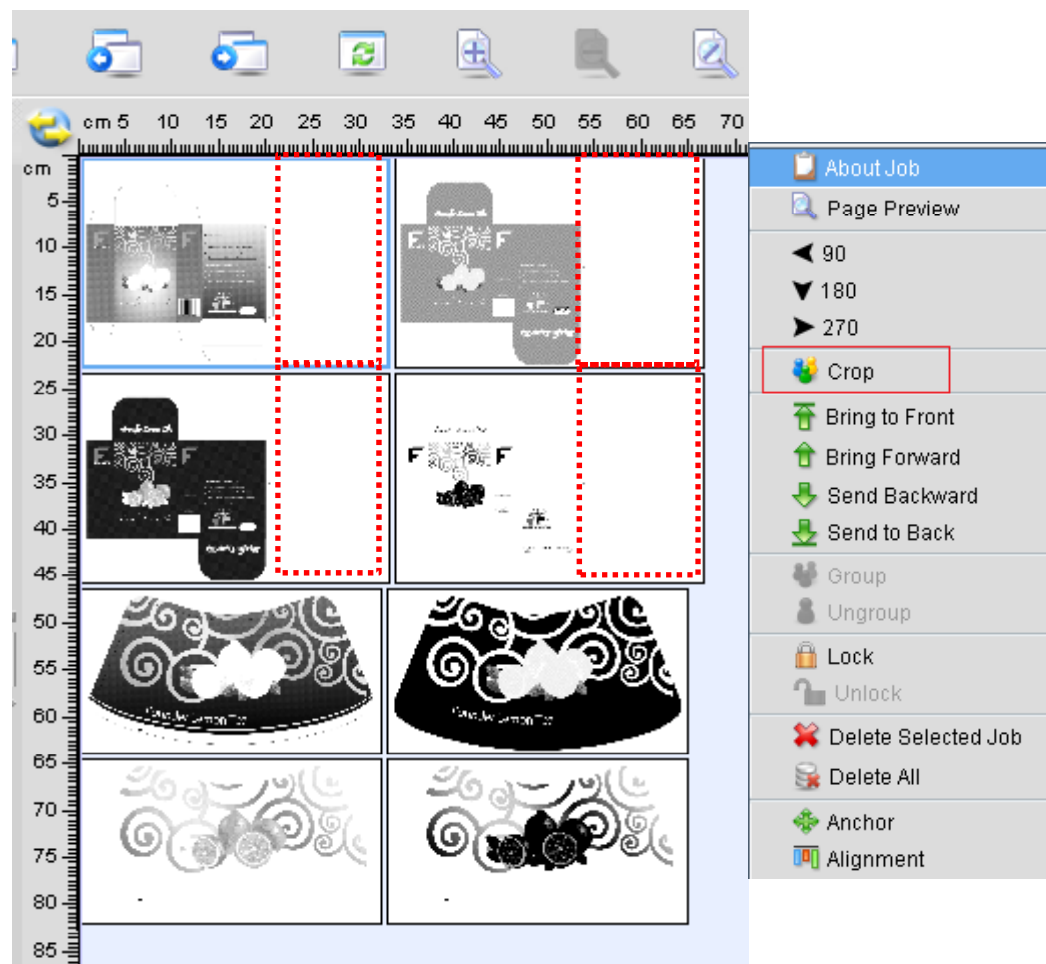
More flexible



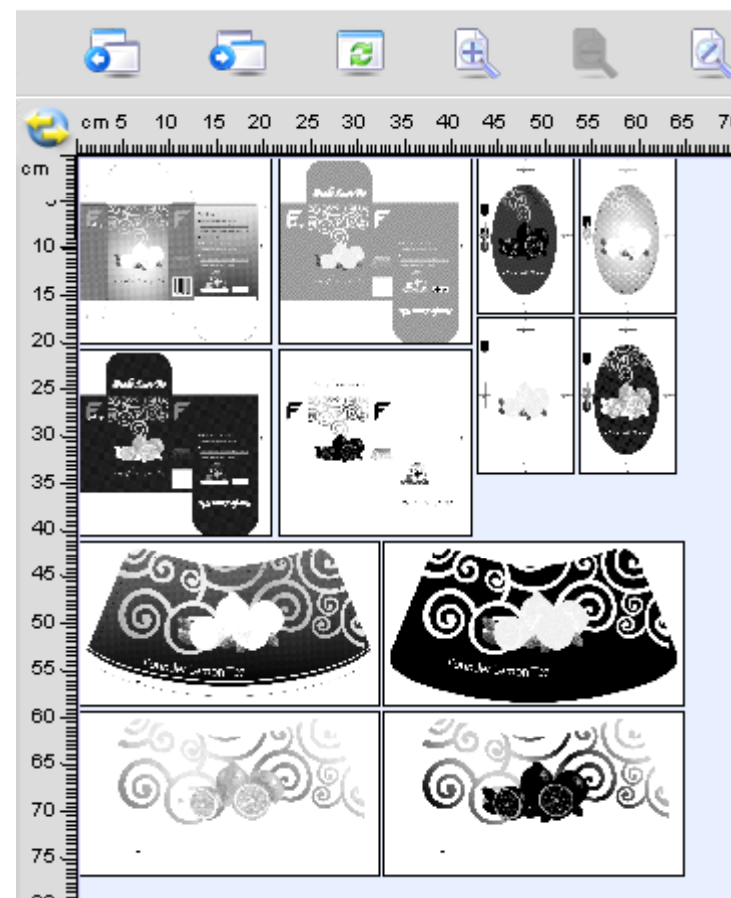
Manual Ganging

FOUNDER 方正

Crop



Before



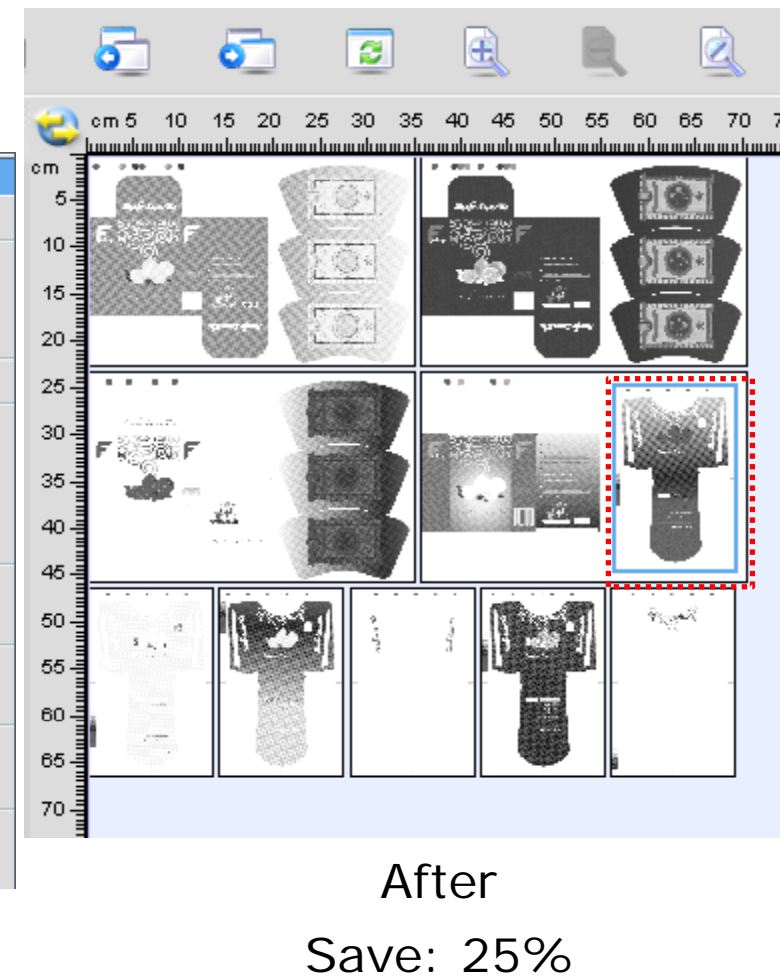
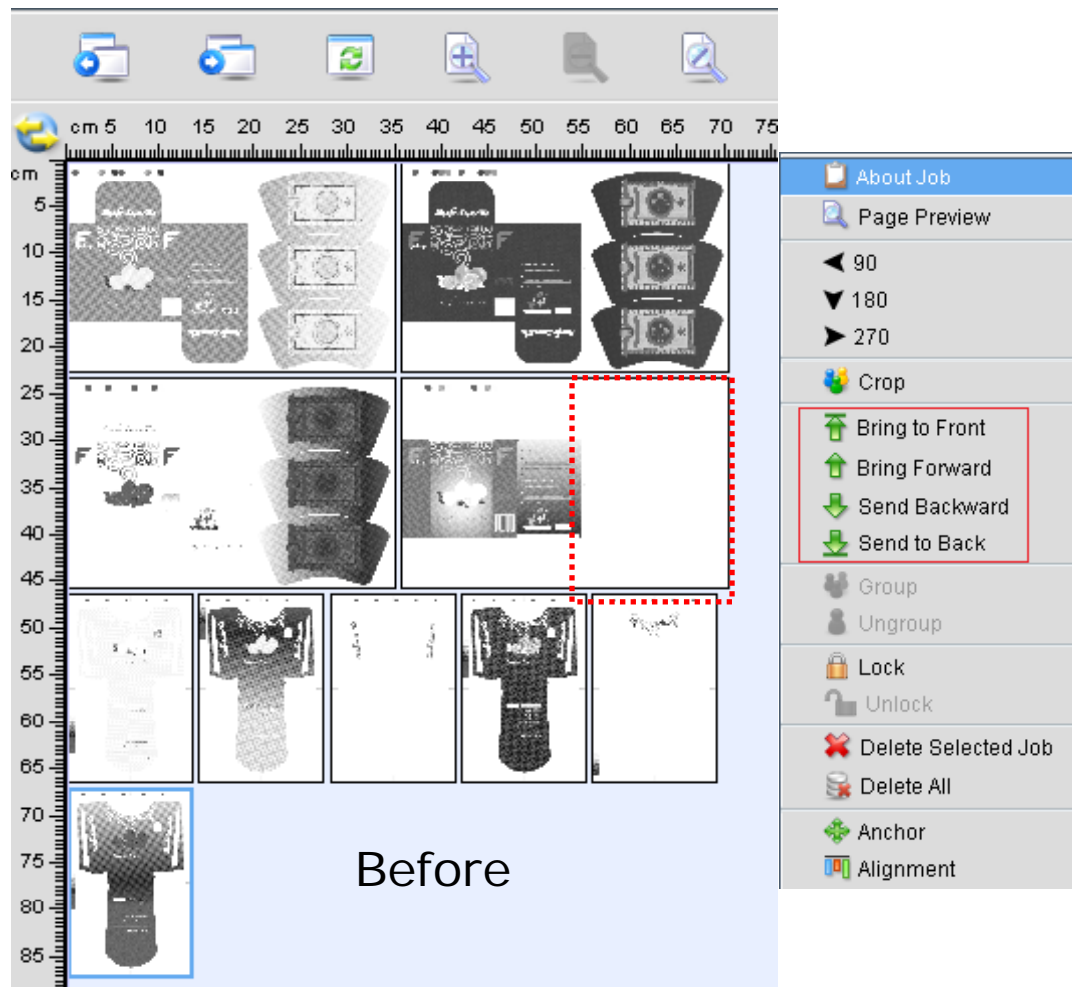
After

Save: 24%

Manual Ganging

FOUNDER 方正

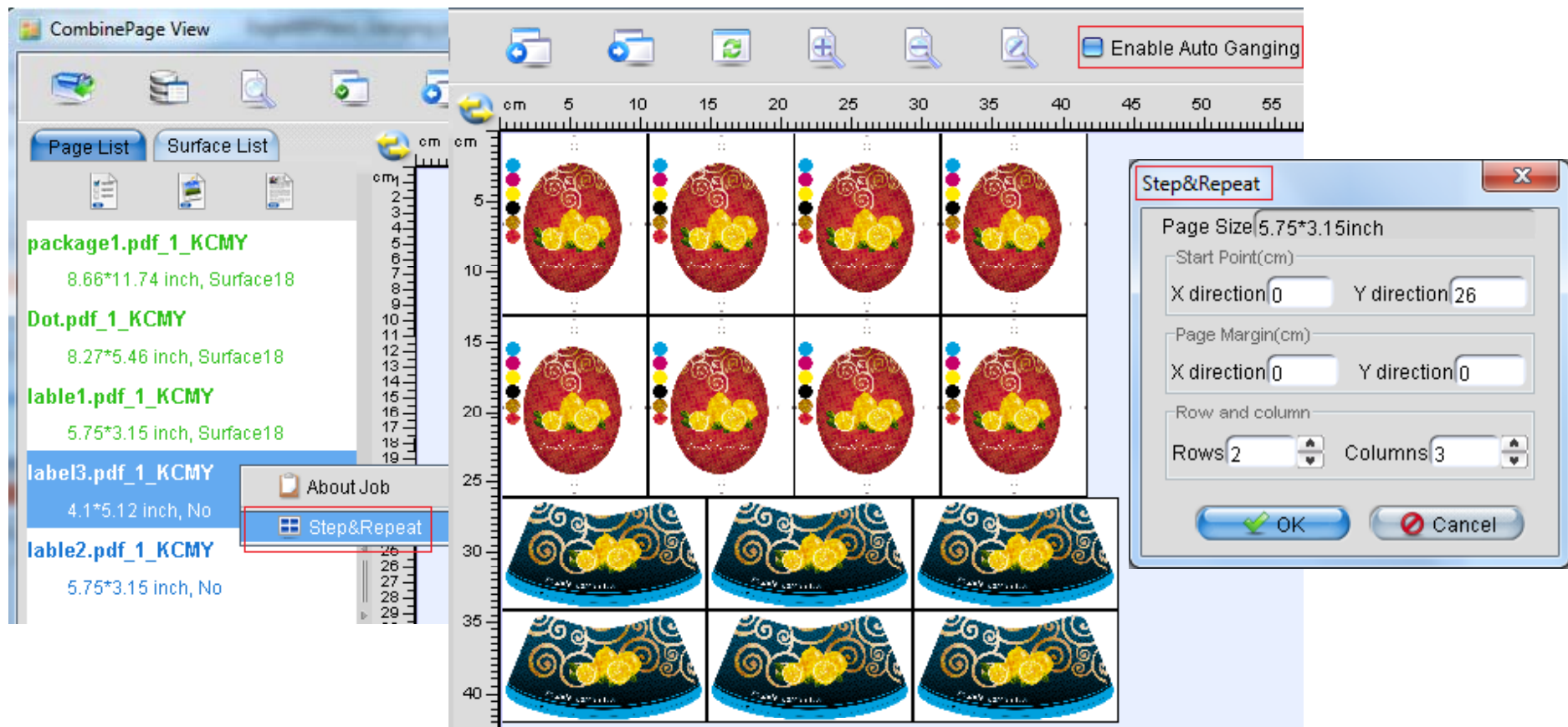
Overlap



Manual Ganging

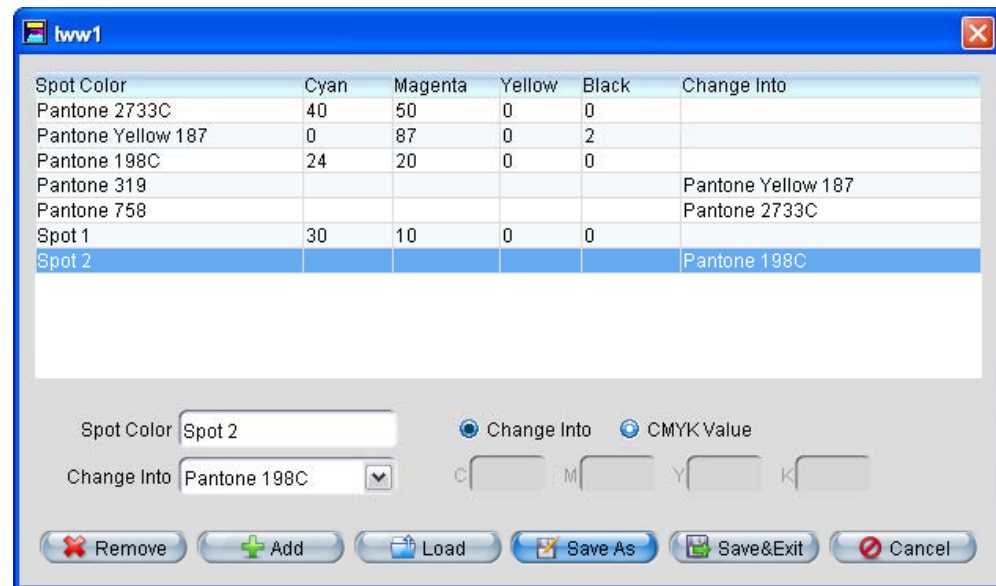
FOUNDER 方正

Step & Repeat



Spot color tools

- Combines two or more spot colors into one spot color.
- Removes specified spot colors
- Specify the different angle for some spot color

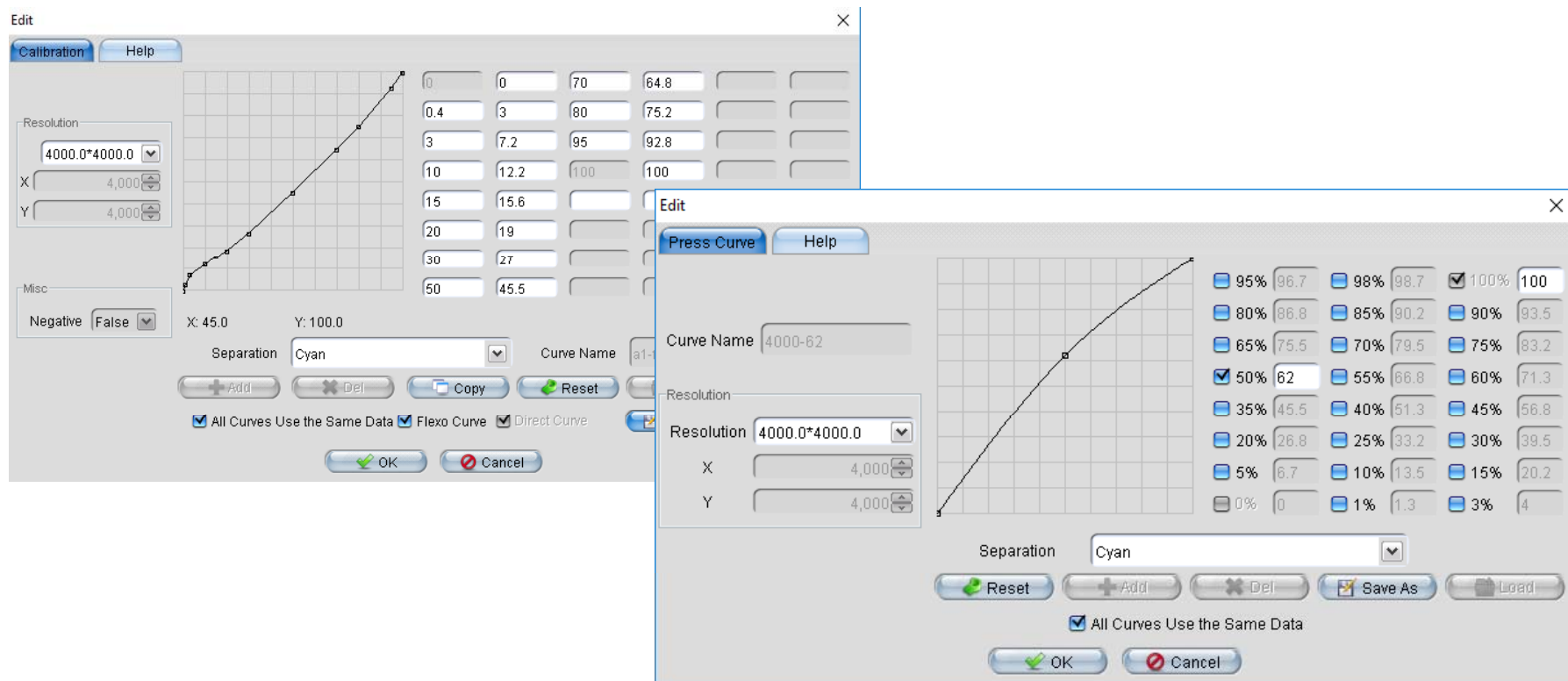


Key Features

FOUNDER 方正

Calibration Tools

- Flexo CTP curve: adjust highlight dot
- Adjust plate linearization
- Adjust dot gain on press machine



EagleRIP screening samples (1)

- Offers 9 built-in dot shapes including Round, Ellipse, Rhomb, Diamond, Square, PureRound, SharpEllipse, Cross and Founder FM

Round (Euclidean Round)



Rhomb



Ellipse



EagleRIP screening samples (2)

Diamond



Pure Round



Sharp Ellipse



Square

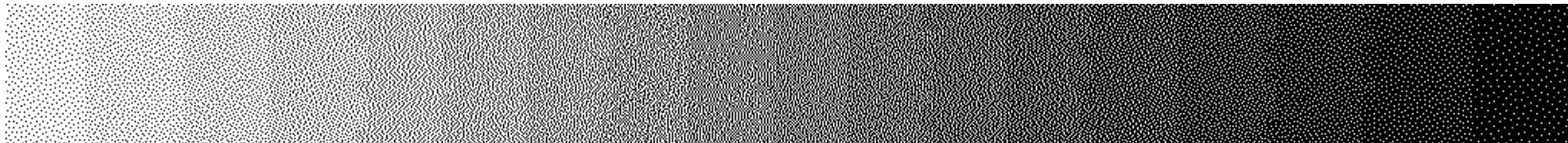


EagleRIP screening samples (3)

Gravure



Founder FM (First Order)

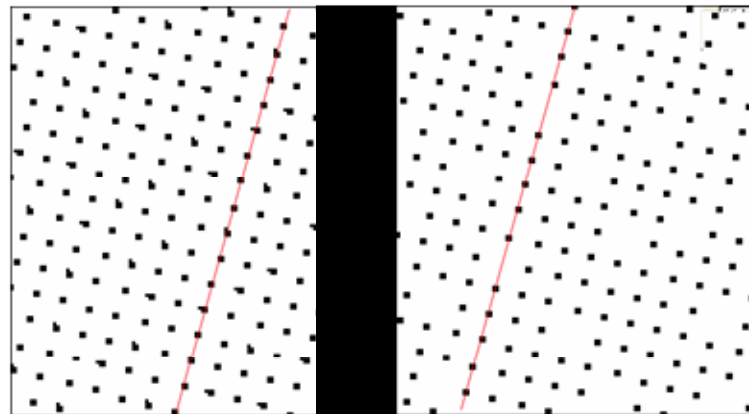


- The first 8 dot shapes are conventional Amplitude Modulated screen dot shape
- “Founder FM (First Order)” is Frequency Modulated dot shape

Screening – EagleFAM add-on option (i)

- EagleFAM is AM and FM hybrid screening which is developed specifically for CTP production and represents a breakthrough in quality.
- Overcomes the weaknesses and exploit the strengths of both traditional AM and FM screening.
- EagleFAM employs Founder AM screening (7.5 degree offset) for midtones, easily achieving high quality with or above 340LPI even under low resolution without extra work on press.
- For highlights and shadows which are difficult to reproduced, EagleFAM adopts Founder FM screening, the dots align along existing Founder AM angles. This prevents FM dots from being noisy in some area and makes the dots look smooth and clean.

Screening - EagleFAM add-on option (ii)



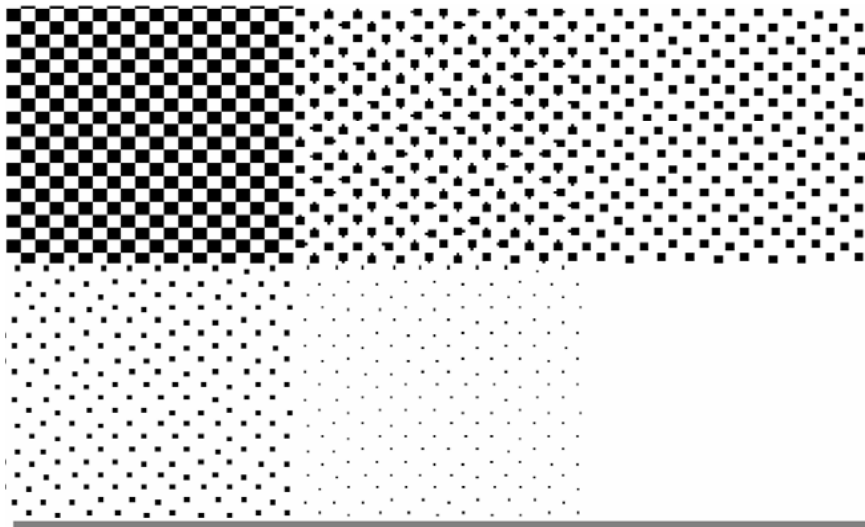
AM

FM

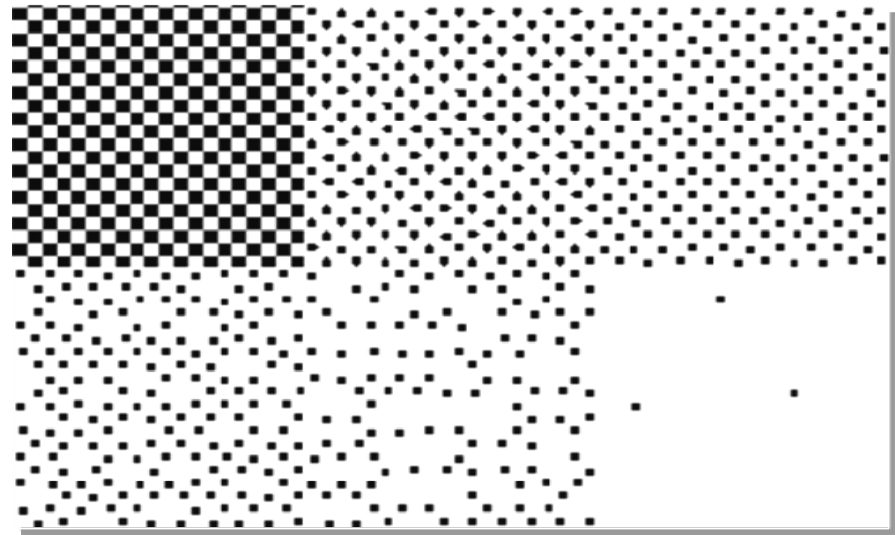
Although the FM dots at highlights or shadows appear to be random, the dots still align along the existing AM angles.

Screening - EagleFAM add-on option (iii)

- Adjust the area of FM dots according to the smallest reproducible dot your press can deal with.
- When EagleFAM dot reaches the smallest and easiest printable dot for the press, the dots will not be smaller.



Founder AM



Founder EagleFAM

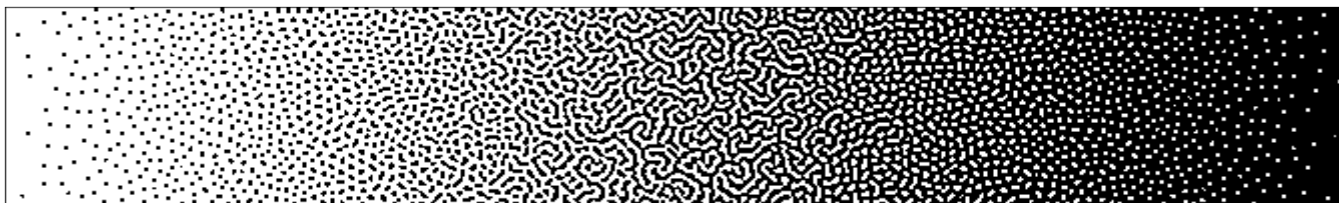
Screening - EagleFM add-on option

- Base on green noise FM technology
- Second order FM technology
 - Uses variable dot size and variable spacing
 - Control the randomness of dots.

First order (Traditional FM screening)

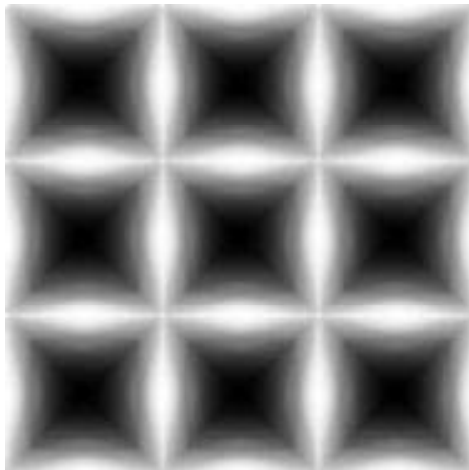


Second order (EagleFM screening)

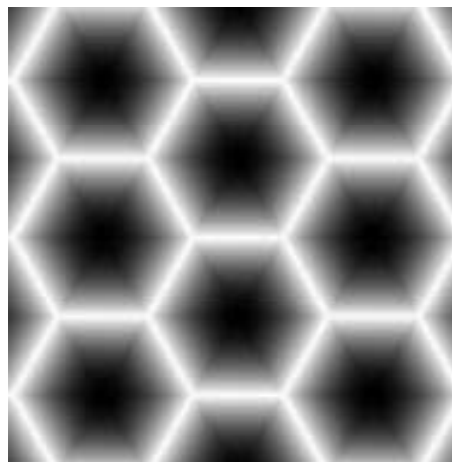


Screening - EagleAGS add-on option (Accurate Gravure Screening)

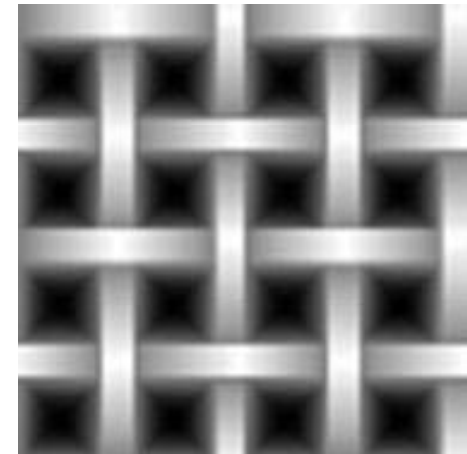
Pin Cushion



Hexagonal



T-Shape



Key Features

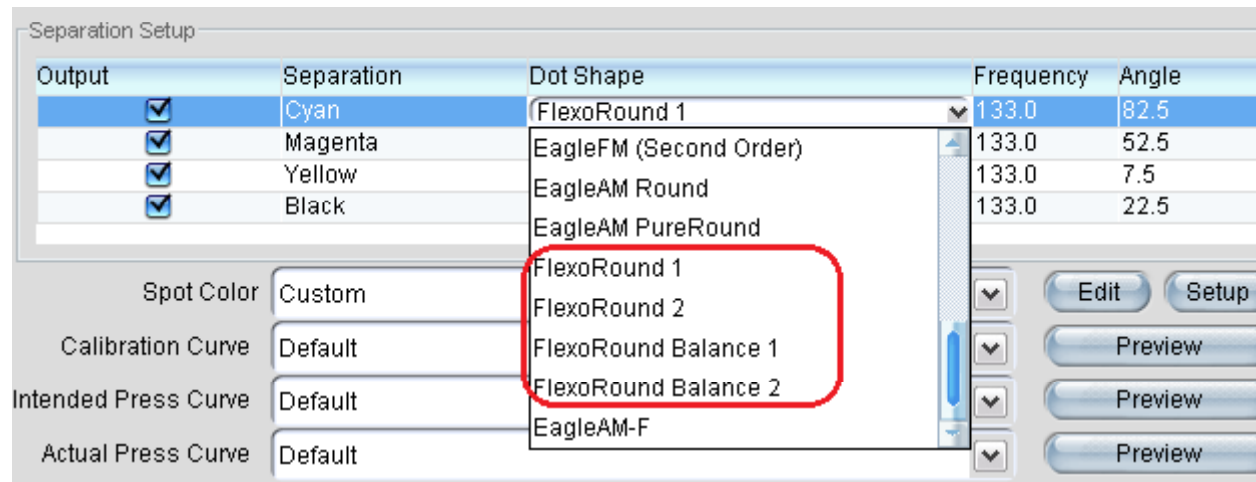
FOUNDER 方正

Flexo Screening

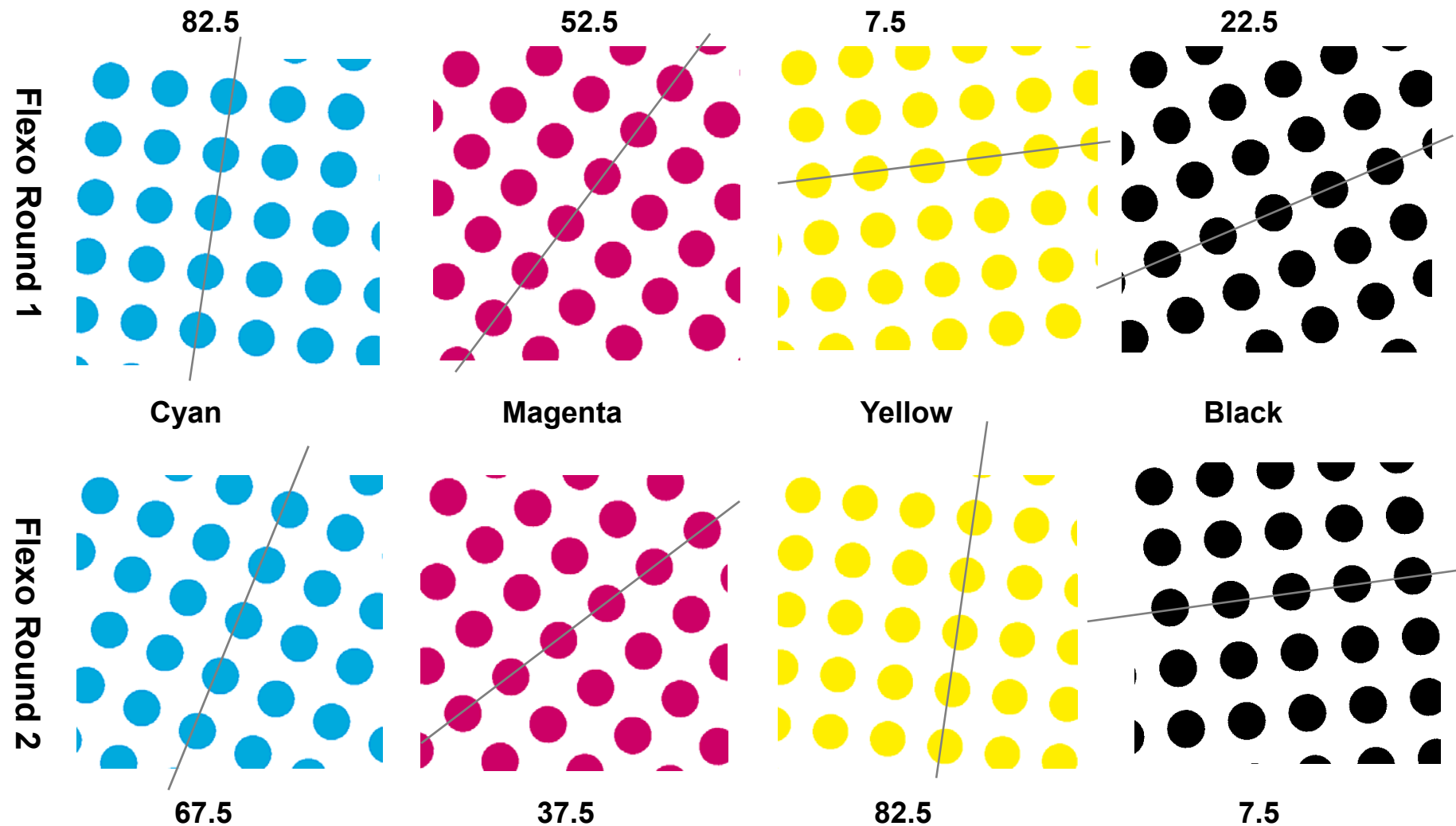
- ✓ FlexoRound1, FlexoRound2
- ✓ FlexoRound Balance 1, FlexoRound Balance 2

Common Ground

- ✓ Pure Round
- ✓ 7.5 degree shift
- ✓ Miracle cell

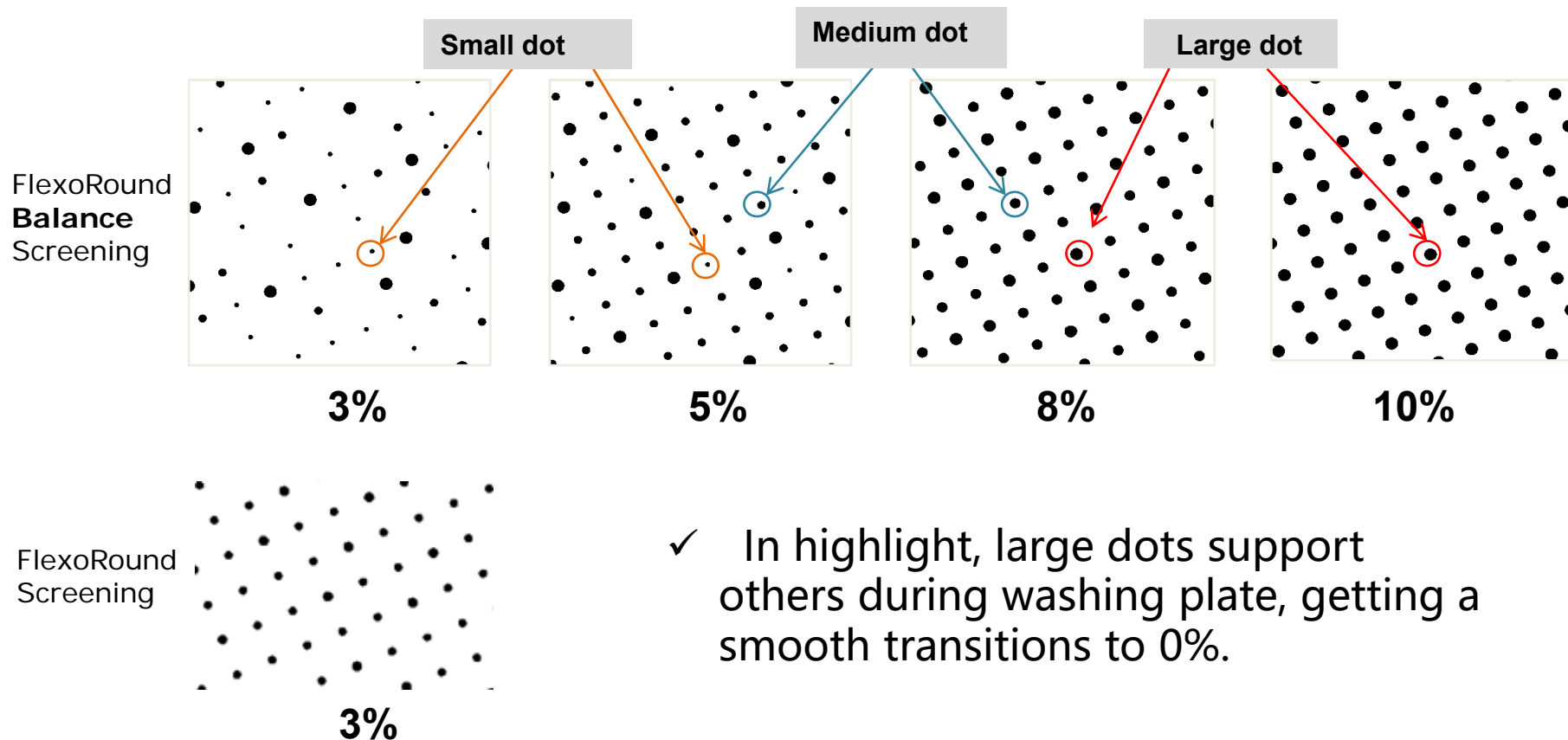


FlexoRound Screening



FlexoRound Balance Screening

- ✓ On the highlight area, adopt different dot sizes – small, medium and large, to increase gray level .



FlexoRound Balance Screening



Plate A

One dot size on highlight, there is no supporting among dots.



Plate B

All dots of small, medium and large support each other while washing and printing.

Miracle Cell

- ✓ Increase ink density on shadow area in flexo printing.

☒ Miracle Cell

Miracle Cell

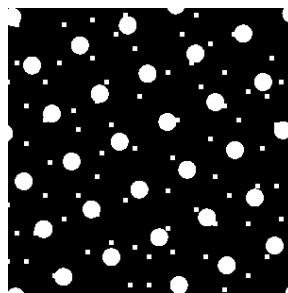
Size(pixel) Density(%) End Value(%) Type

Dot Size

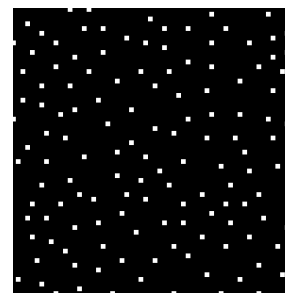
Shadows dot size(um) Highlights dot size(um)

Separation Setup

Output	Separation	Dot Shape	Frequency	Angle
<input checked="" type="checkbox"/>	Cyan	FlexoRound 1	133.0	82.5
<input checked="" type="checkbox"/>	Magenta	FlexoRound 1	133.0	52.5
<input checked="" type="checkbox"/>	Yellow	FlexoRound 1	133.0	7.5
<input checked="" type="checkbox"/>	Black	FlexoRound 1	133.0	22.5



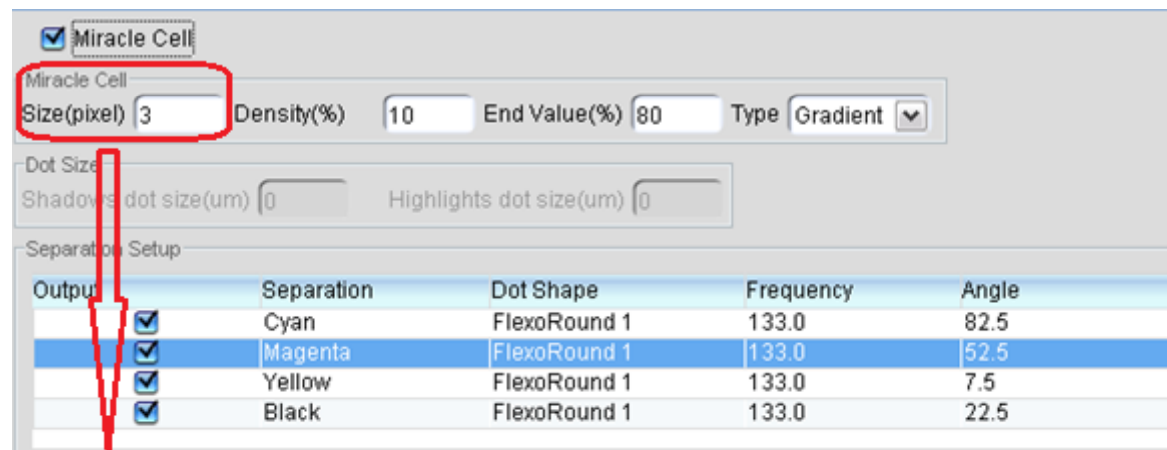
90%



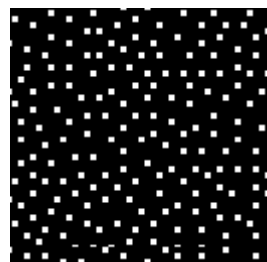
100%

Miracle Cell

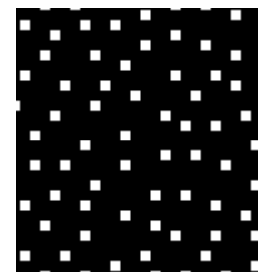
- ✓ Size of miracle cell



Size=1pixel
5080dpi



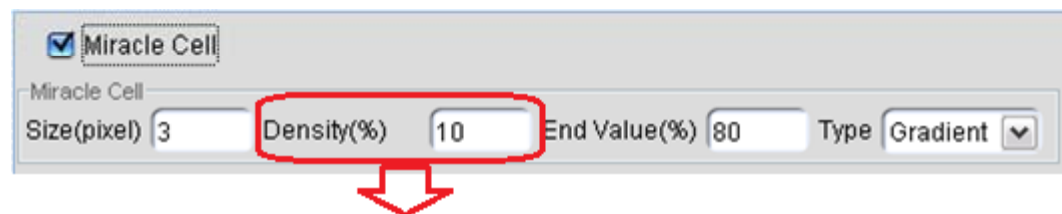
Size=3pixel
5080dpi



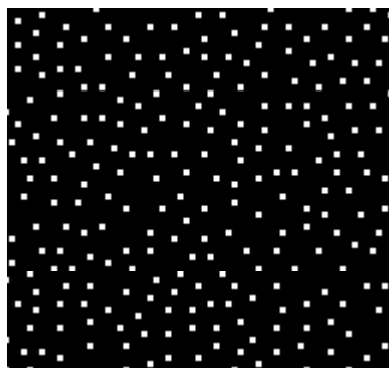
Size=5pixel
5080dpi

Miracle Cell

- ✓ Different miracle cell density settings

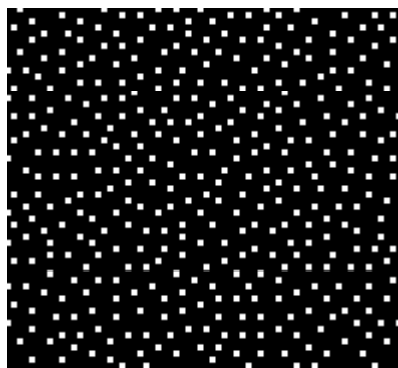


Density: 6



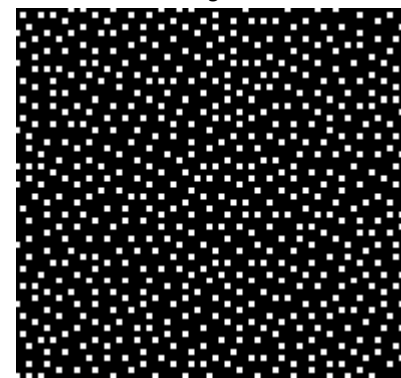
100%

Density: 10



100%

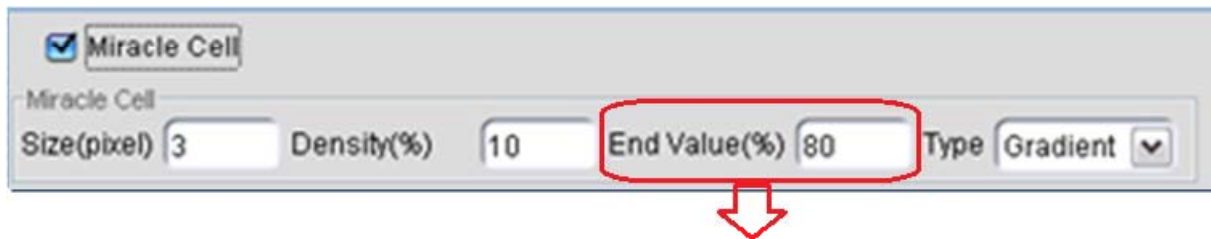
Density: 15



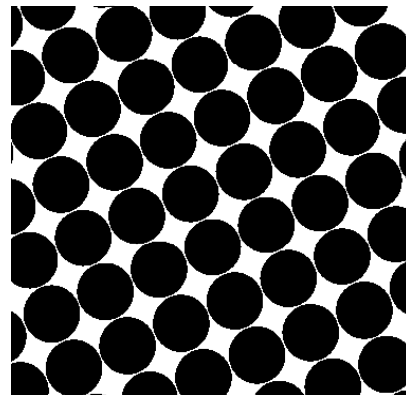
100%

Miracle Cell

- ✓ End value of miracle cell

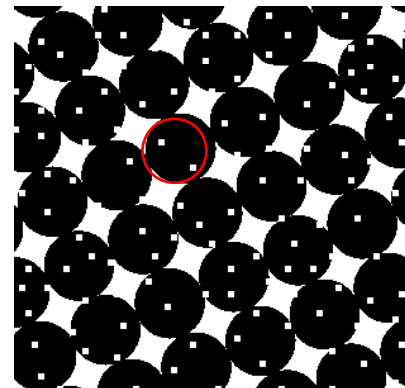


No extract tiny



79%

End value of



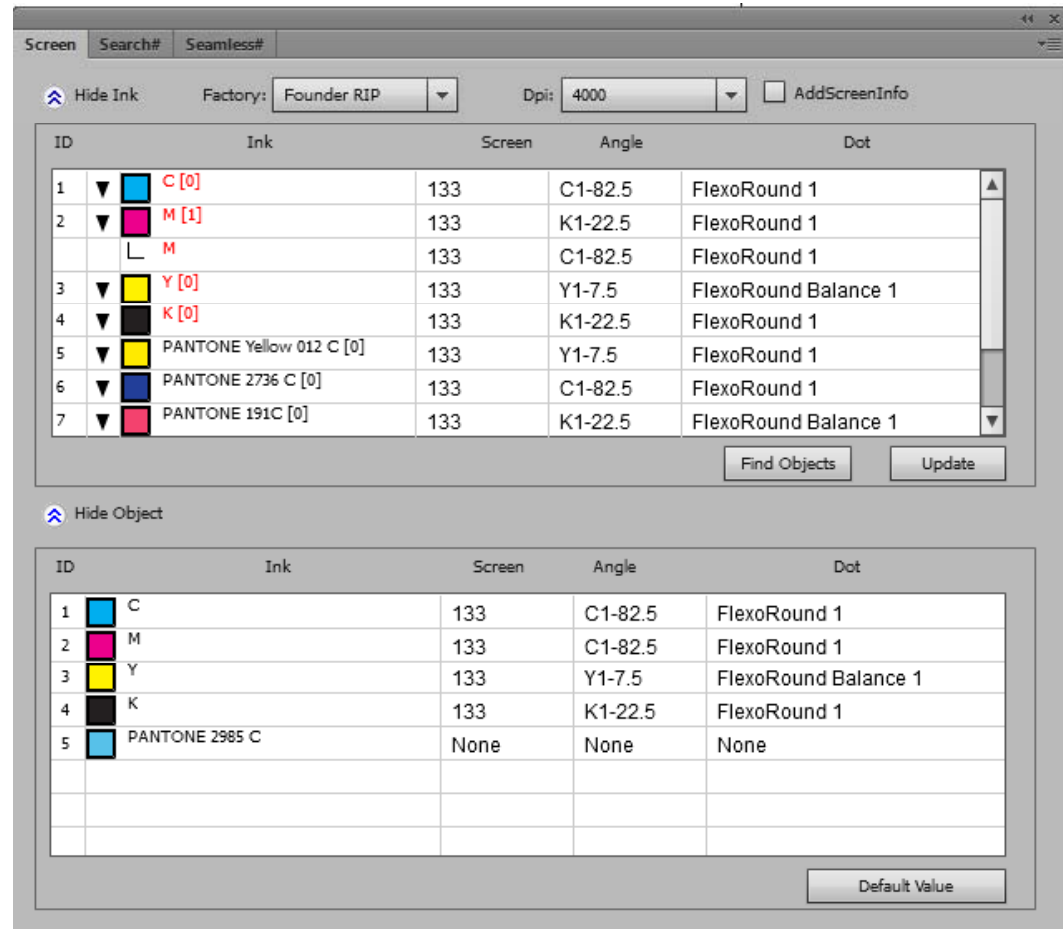
80%

Key Features

FOUNDER 方正

Support object screen file

Support object screen file generated by Founder **PaSharp** Screen#, specify different screening parameter for different object.



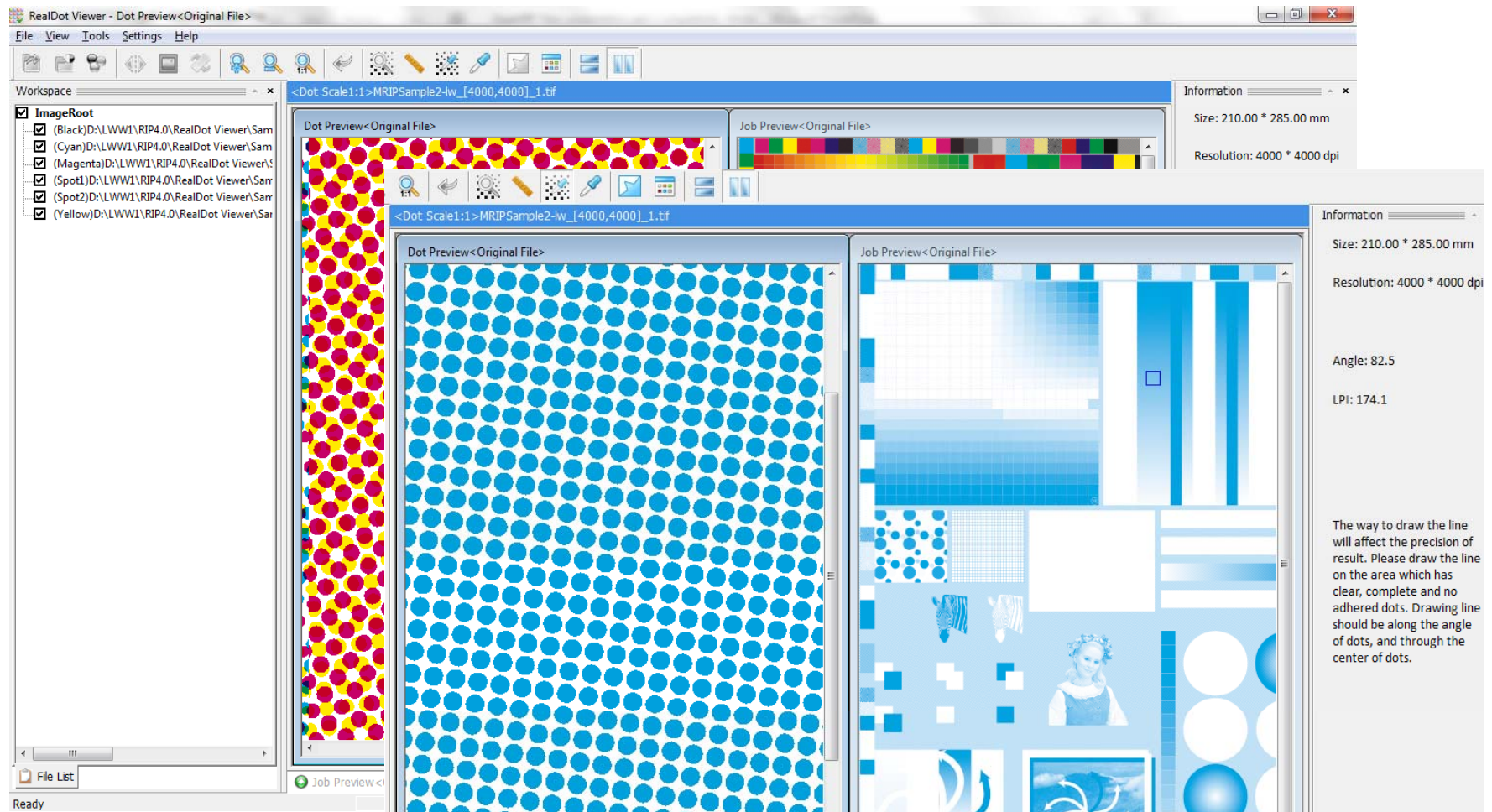
Key Features

FOUNDER 方正

1-Bit TIFF

RealDot Viewer

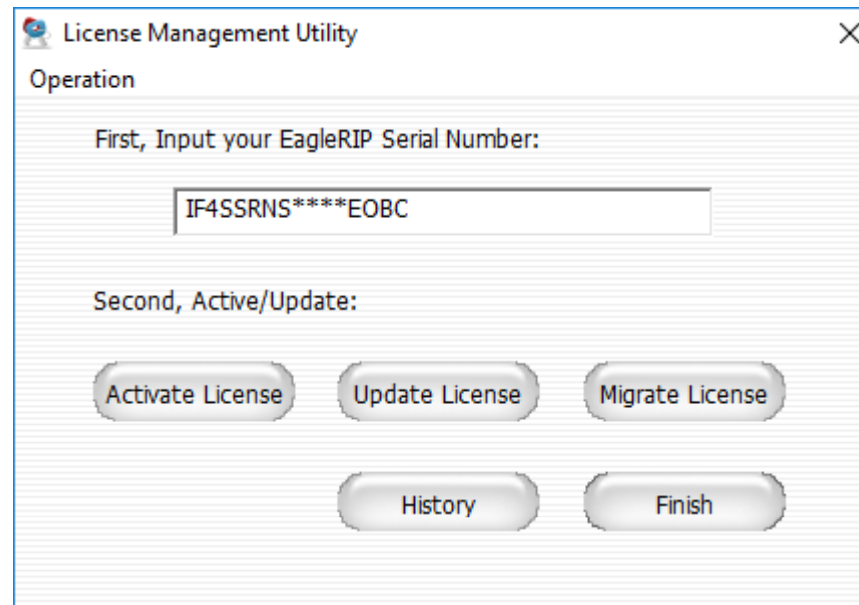
- ✓ Preview real dot on monitor, compare files, measure dot angle, frequency and dot%



Cloud licensing authorization

Benefits:

- ✓ Safety
- ✓ Save cost
- ✓ Flexible & Effective
- ✓ Easy to use



- ✓ **License Management Utility** is a tool to manage the cloud license via serial number.
- ✓ **Activate License** is to activate the cloud license.
- ✓ **Update License** is to add modules or extend time.
- ✓ **Migrate License** is to release the SN and activate on another computer.

Recommended system configurations

- CPU: Intel i7
- RAM: 4GB or above
- HDD: 200GB free space
- OS: Windows 7/8/10, Windows Server 2012

Compatible

- Compatible with major software packages
- Adobe CSx/CCx (Illustrator, Indesign, Photoshop etc.)
- Corel CorelDraw
- Macromedia Freehand
- Microsoft Office Suite
- Quark-Xpress
- Others...

Packs and Configurations

FOUNDER 方正

Functions\Package	Standard	Premium	Label	Notes
EagleRIP 5	√	√	√	PDF 1.7, 1/8-bit TIFF
FlexoRound Screening	√	√	√	Pure round, 7.5
RealDot Viewer	√	√	√	Quality assurance tools
FlexoRound Balance Screening	–	√	○	HD: 3 sizes dots in highlights area.
Miracle Cell Technology	–	√	○	Solid ink density increase technology
CIP3	○	○	○	Producing PPF files
EagleAGS Screenings	○	○	○	Gravure screenings
EagleFAM	○	○	○	Hybrid AM&FM screening
EagleFM	○	○	○	2 nd order FM screening
EagleAM-F	○	○	○	High frequency screening for newspaper
Limitation (Upgradable)	–	–	√	Size & Resolution

www.foundereagle.com

Beijing Founder Electronics Co., Ltd.

Thanks



9, No. 5 Street, Shangdi Information Industry Base
HaiDian District Beijing 100085, P.R. China.
Tel: +86 10 62981440 Fax: +86 10 62981440
Email: GASupport@founder.com.cn

Contact us at:
Gasupport@founder.com