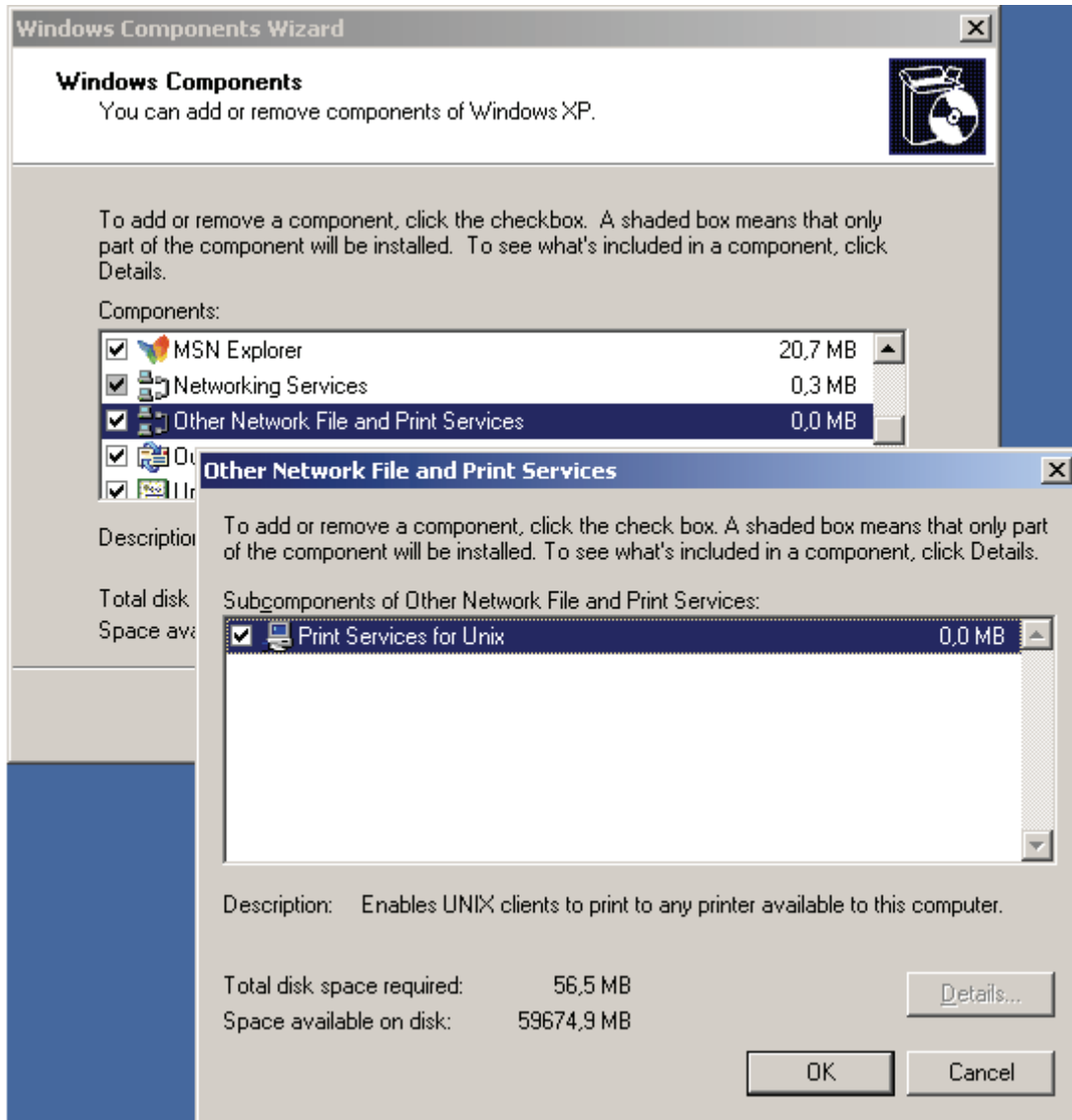
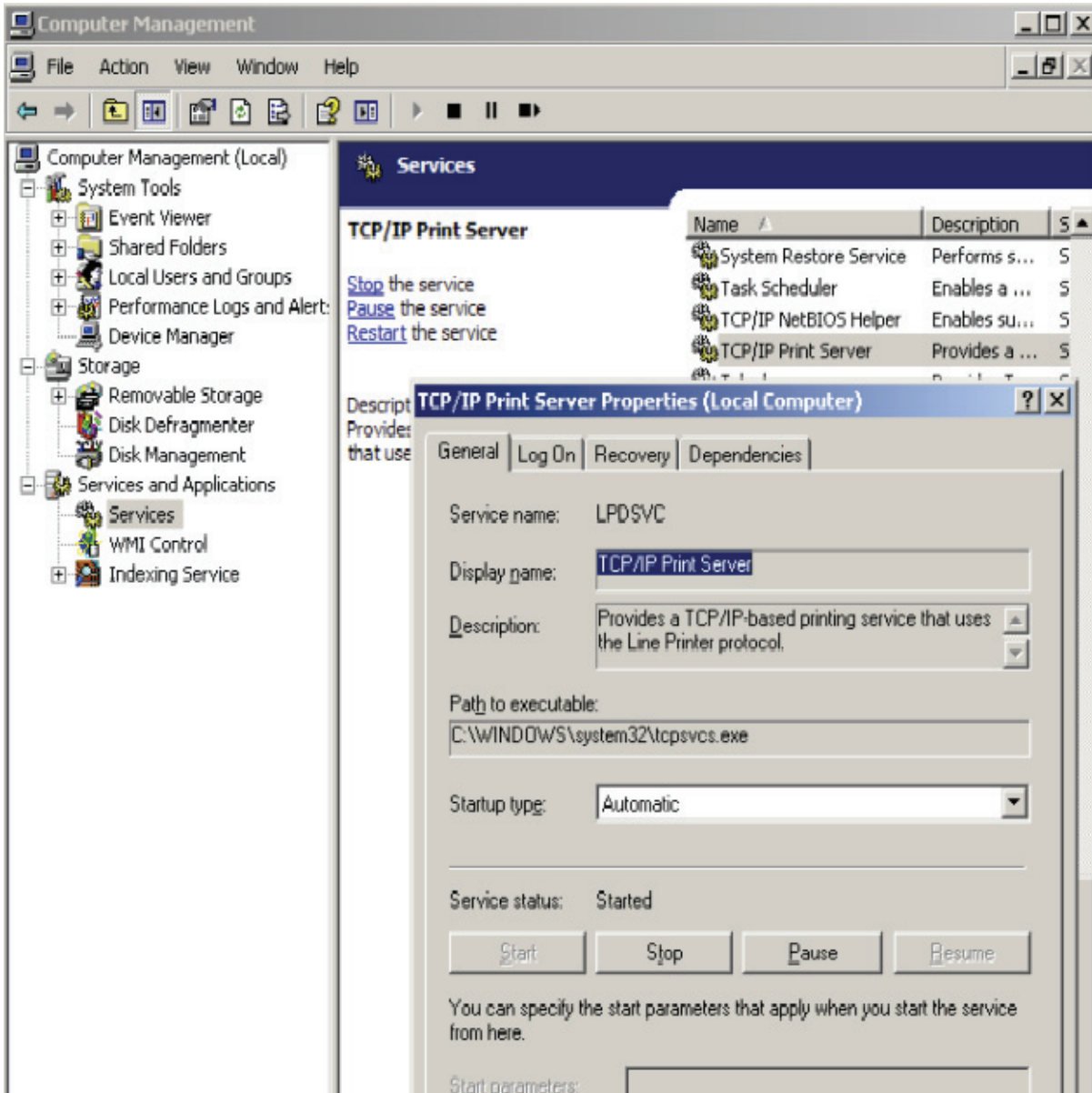


## Print from Mac OS X to Windows via TCP/IP

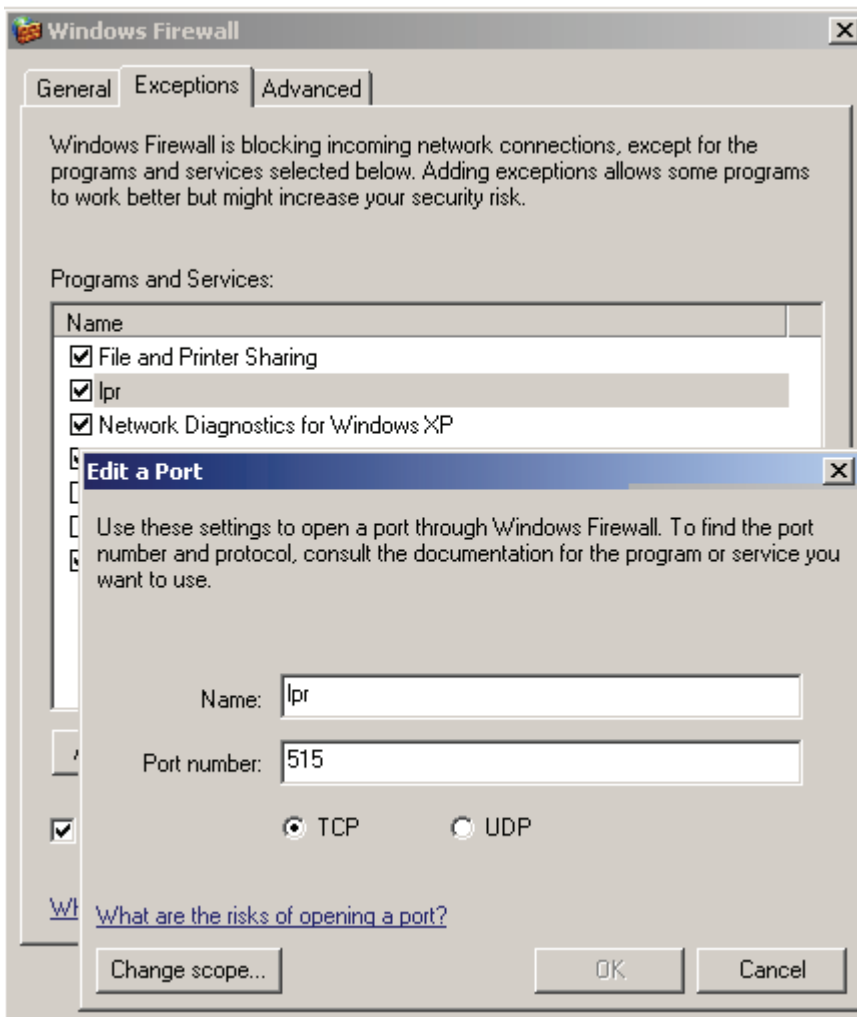
1. Install "Print Services for Unix" on Windows which EagleRIP is installed.



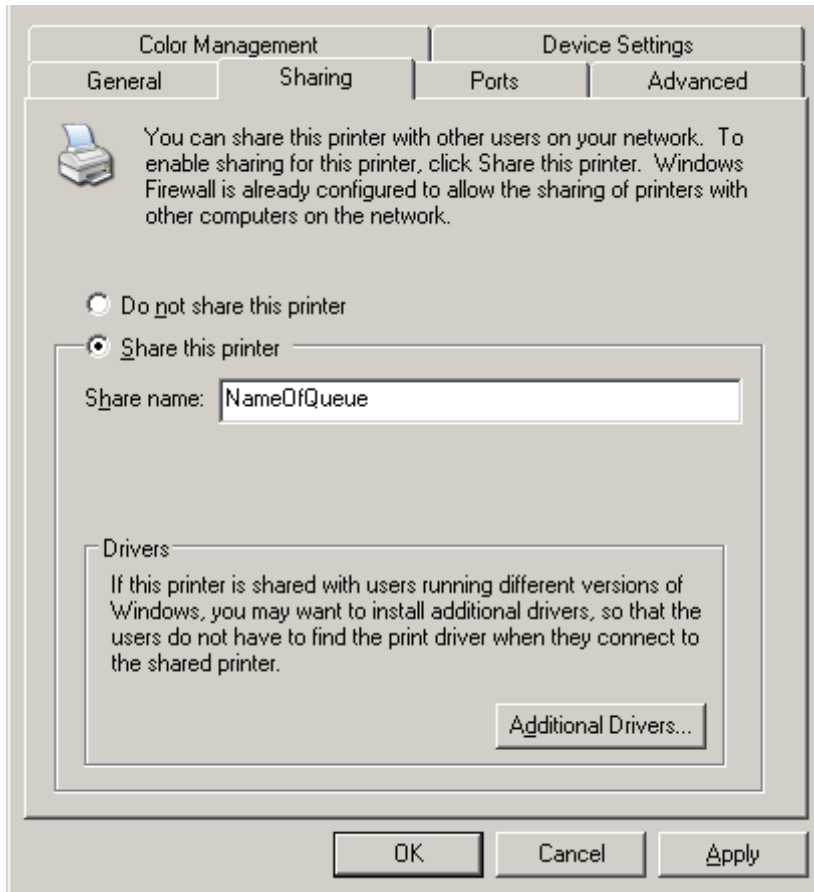
2. Set the Startup type for the "TCP/IP Print Server" Service to Automatic



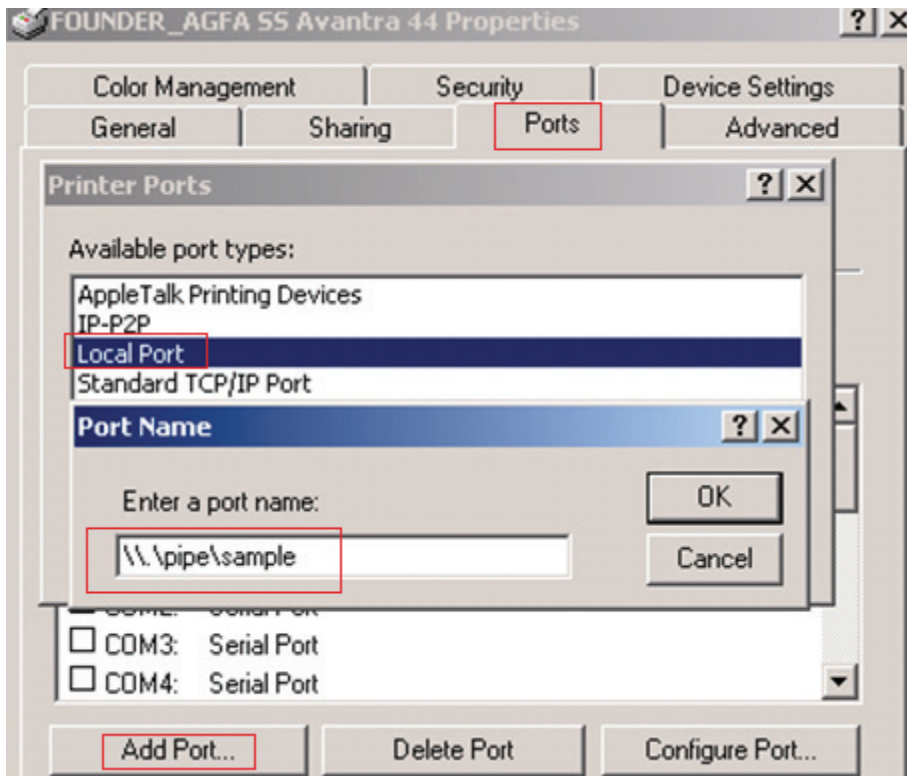
### 3. Make a Windows Firewall exception on port 515 TCP



### 4. Share your printer using a unique share-name



5. Set the printer's port to a NTPIPE printer, for example you have created an input in EagleRIP first (input name is "sample")



6. Add your printer on Mac OS X using IP

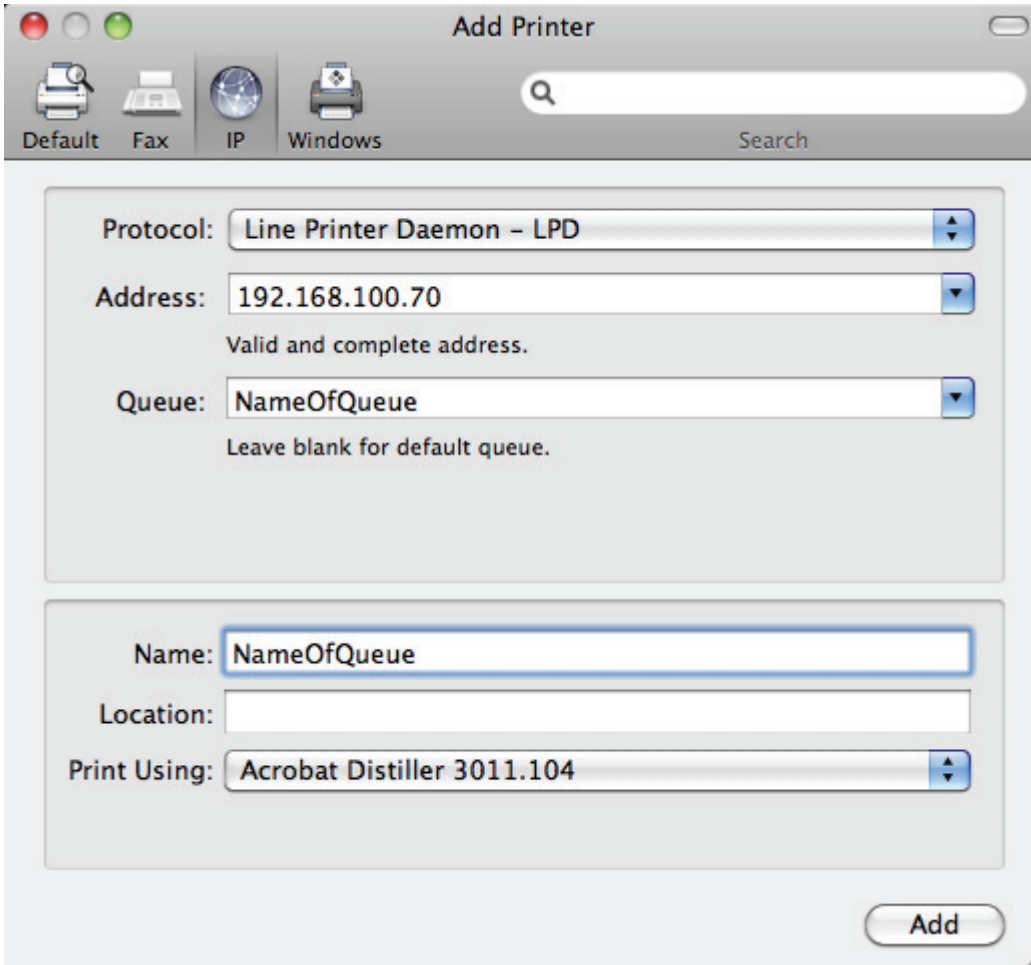
Protocol: Line Printer Daemon - LPD,

Input the IP address of your PC with the shared printer in "Address"

Input the shared-name in "Queue"

Name your printer in "Name" as you like

Select a PPD in "Print using" (You can generate a MAC PPD in EagleRIP, and copy this PPD to MAC)



Vivian Li Wei

End