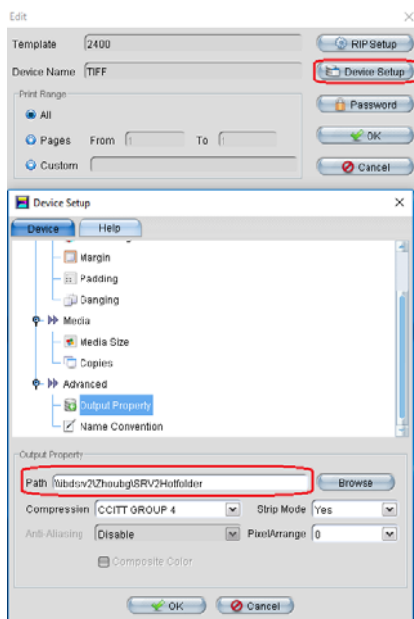


How to use EagleRIP in local network?

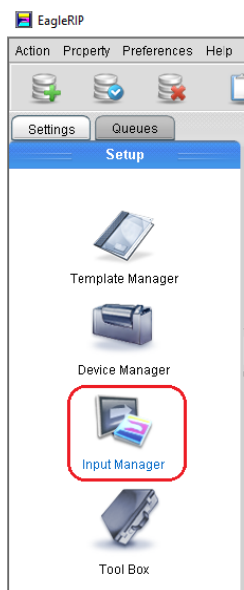
In local network environment, EagleRIP works with hot folder properly via a template. Customer can submit jobs to a shared folder by remotely, EagleRIP will process the jobs and save the bitmaps into another shared folder, then the CTP driven computer could download the bitmaps and output to CTP machine.

Please do it by following steps below:

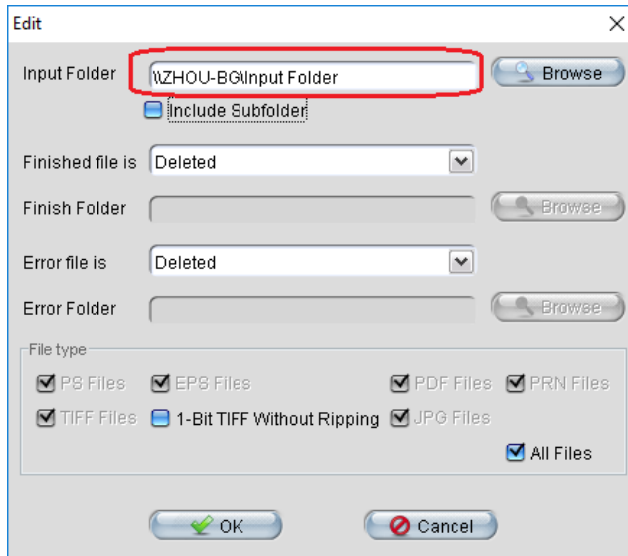
1. Create two shared folders on any computer(s) in local network, suppose EagleRIP installed on another computer in this local network.
2. Setup a template, input a shared folder to save bitmaps as following, this shared folder is used as input folder of CTP TIFF downloader.



3. Setup a hot folder via Input Manager, select the template above.



4. Input another shared folder in the path Input Folder while editing the Hot Folder setup, and enable the hot folder.



5. Submit the jobs into the shared folder as above pic. In 5 seconds the jobs will be processed by EagleRIP, and the 1-bitTIFF files will be saved into the folder as in step 2.

The end