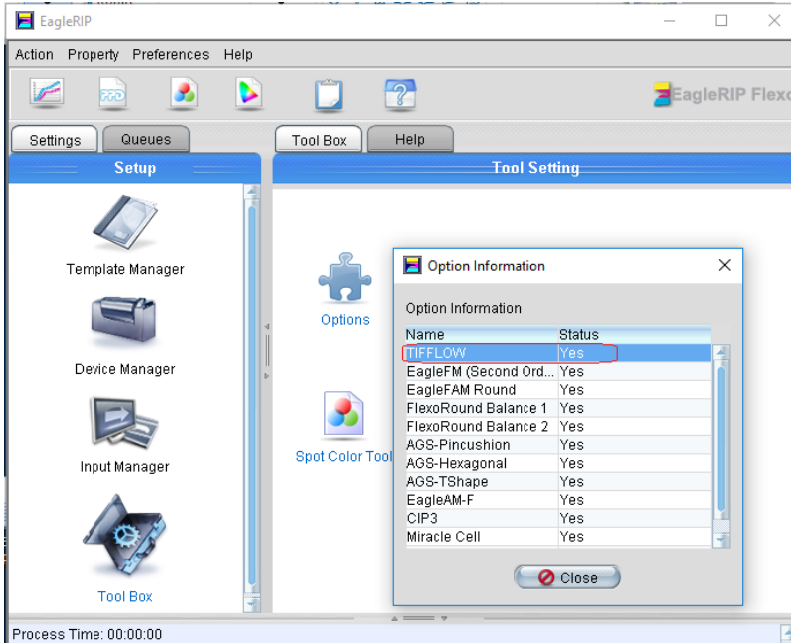
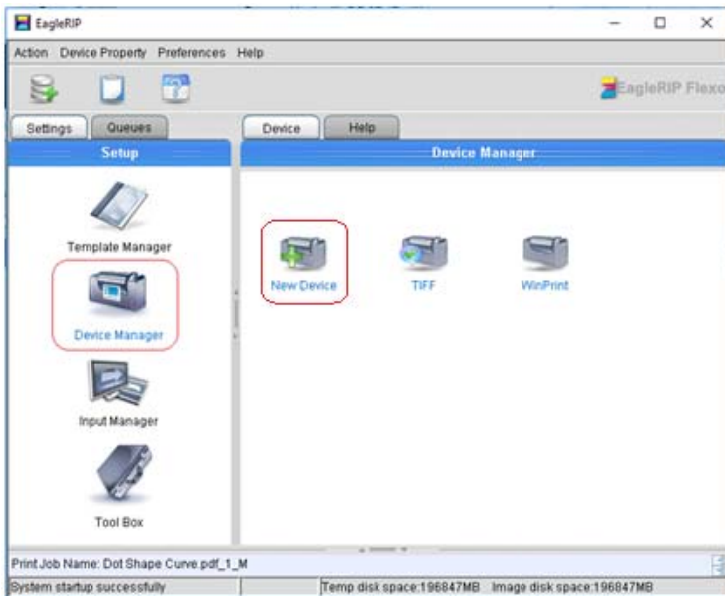


How to use TIFFlow in EagleRIP Flexo?

1. Make sure the TIFFlow is enabled in EagleRIP Flexo, as following, the status of TIFFLOW is YES.



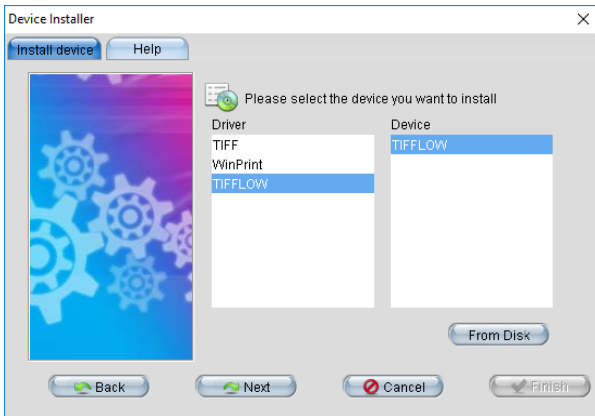
2. After EagleRIP Flexo installed, there is no TIFF Flow showing in Device Manager, as following:



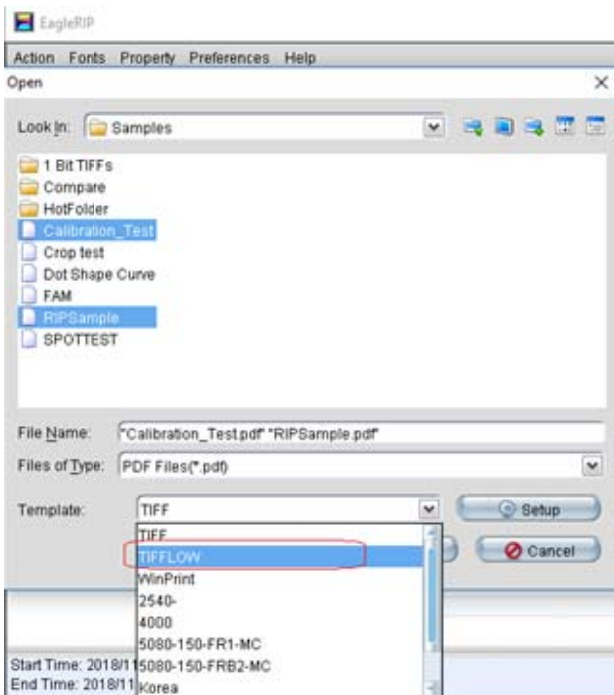
Click on New Device to Install device (as above), click Next.



Select TIFFFLOW, click Next, then click Finish to complete the installation.



3. Restart the program.
4. While submitting jobs, select TIFFFLOW from Template, and click Setup button to edit RIP parameters. Of course you can also submit jobs with a TIFFFLOW template.



end