

**Get the Job Done !**



**FOUNDER**

Beijing Founder Electronics Co., Ltd.  
No.9, 5th Street, Shangdi Information Industry Base  
Haidian District, Beijing 100085, China

International Business Division  
Fax: +86 10 62981440  
Email: GASales@founder.com.cn

For more products, sales and technical support information,  
please visit our website at <http://www.foundereagle.com>



# **ElecRoc 6**

*An Integrated JDF/PDF Pre-press Workflow Solution*

Native transparency PDF engine  
Zone and transparency trapping  
Navigator preflight  
Ink saving  
Imposition with smart marks

Flexo prepress automation  
Flexo screenings  
Flexo RealDot tools

Copyright © 2000-2014 Beijing Founder Electronics Co., Ltd. All Rights Reserved.

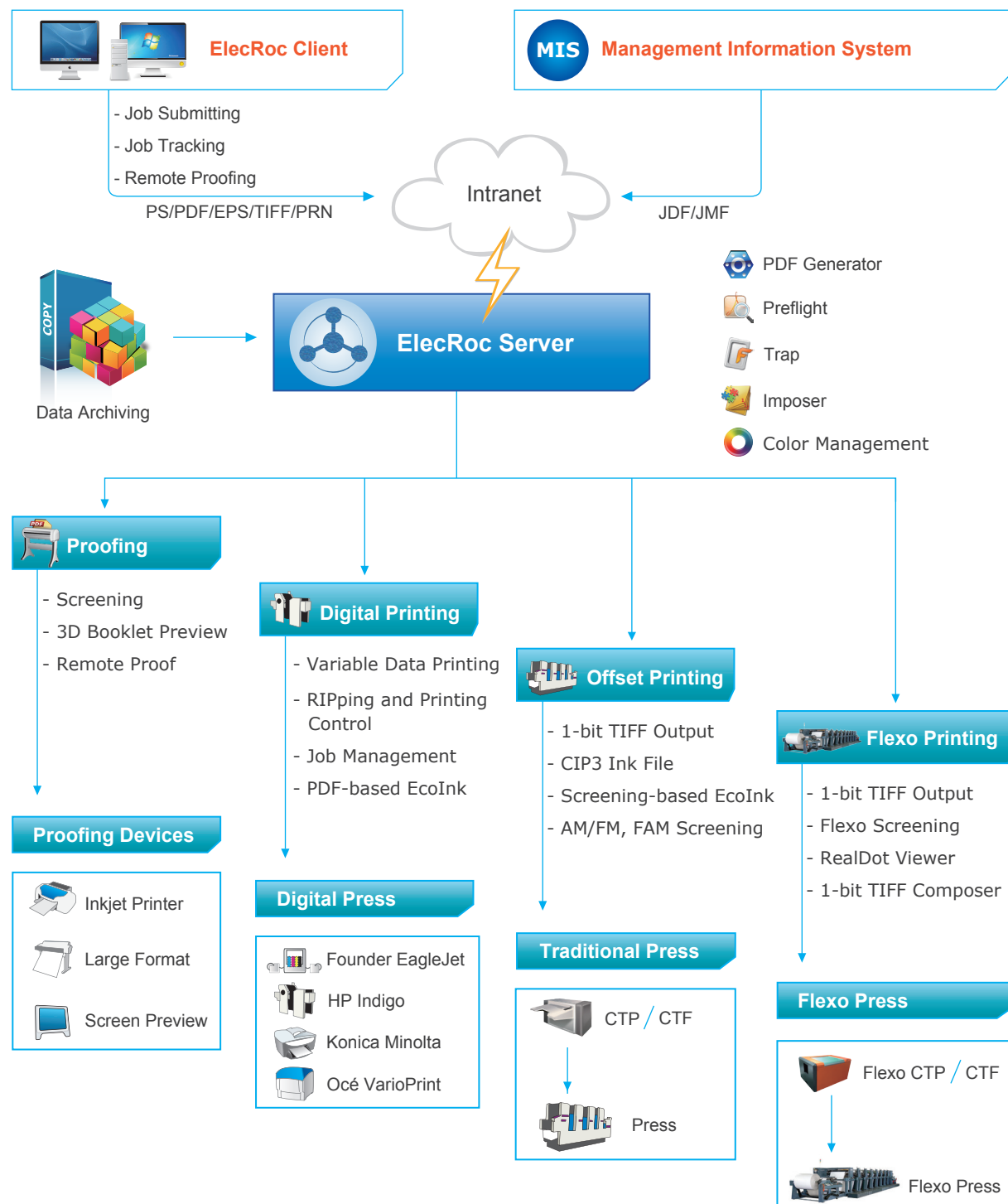




## ElecRoc 6 at a Glance

ElecRoc 6 is a fully integrated JDF/PDF pre-press workflow with server/client system structure to achieve more stability and higher processing efficiency. It has many functional modules, user friendly interface, and easy to operate. Job processing is more secure and file management is easier and more convenient.

Special edition for flexopress/letterpress is NOW available.



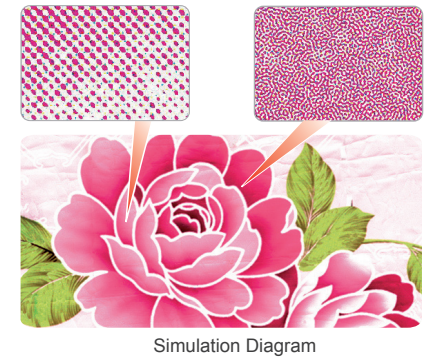
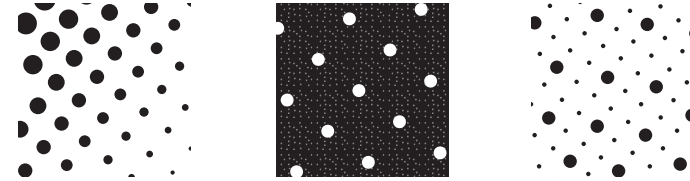
### Recommended Installation Environment

**Server** Windows® Server 2008/2012(EN)

**Client** Windows® 7/2008/2012 Mac OS X 10.8 or above  
Application : Acrobat 9 or above

## Screening Technologies

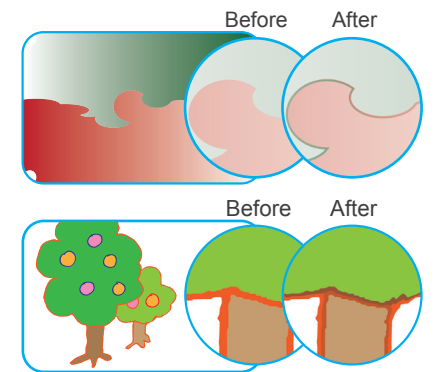
- ▶ 19 industrial proved screenings for flexo, offset, newspaper, gravure, silk and letterpress.
- ▶ Hybrid AM & FM screening.
- ▶ User definable FM screening.
- ▶ Flexo Round screening & Flexo Round Balance screening.



Simulation Diagram

## Trap

- ▶ Trapping templates.
- ▶ Available for graphics, images, spot color & bi-directional gradients.
- ▶ Global trap & zone trap.
- ▶ Internal image trap.
- ▶ Transparency trap.

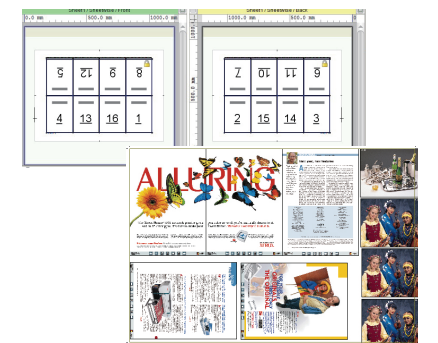


## Preflight

- ▶ Preflight templates.
- ▶ Multi-function preflight.
- ▶ Object navigation.
- ▶ Automatic preflight.
- ▶ Preflight report.

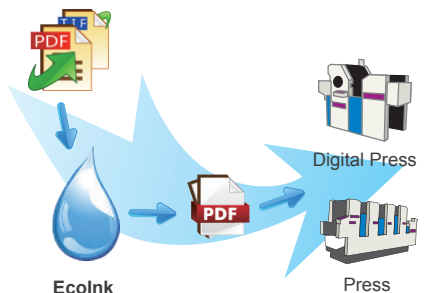
## Imposition & Ganging

- ▶ Imposition templates, JDF enabled.
- ▶ User definable imposition.
- ▶ Instant preview.
- ▶ Multi-function ganging module available for interactive settings, double-sided works, automatic ganging & bypass, step & repeat, automatic page numbering & smart marks.



## EcoInk

- ▶ Ink saving templates.
- ▶ Save up to 20% ink coverage.
- ▶ Standard / customer ICC supported.
- ▶ Available color mode: RGB, CMYK & spot color.
- ▶ Available for PDF-based & screening-based EcoInk.



## CMS & More

