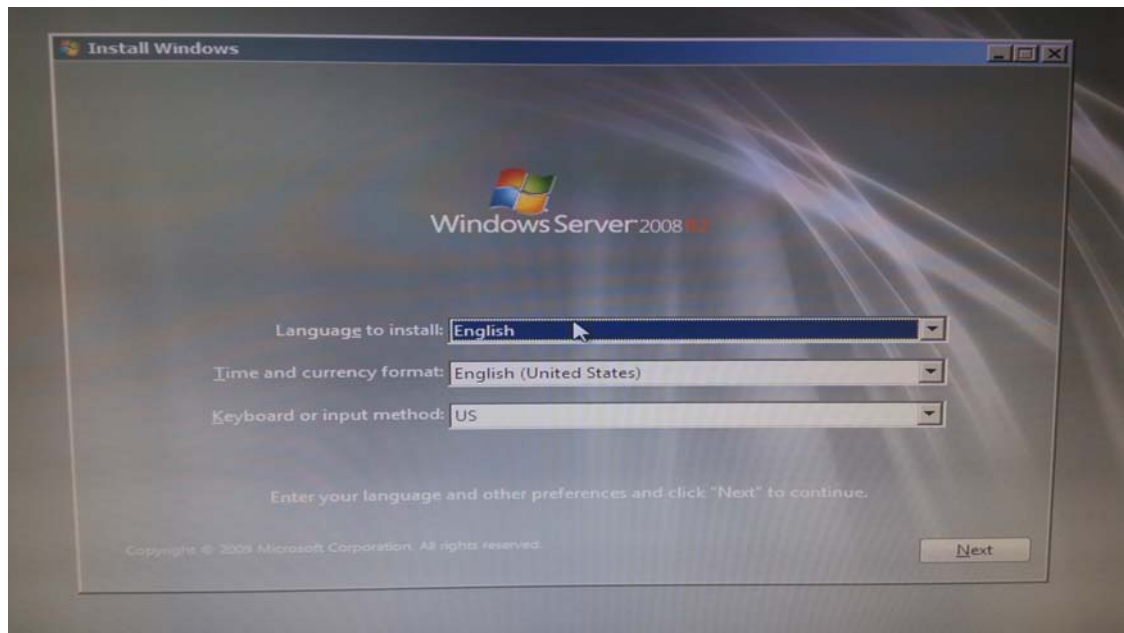
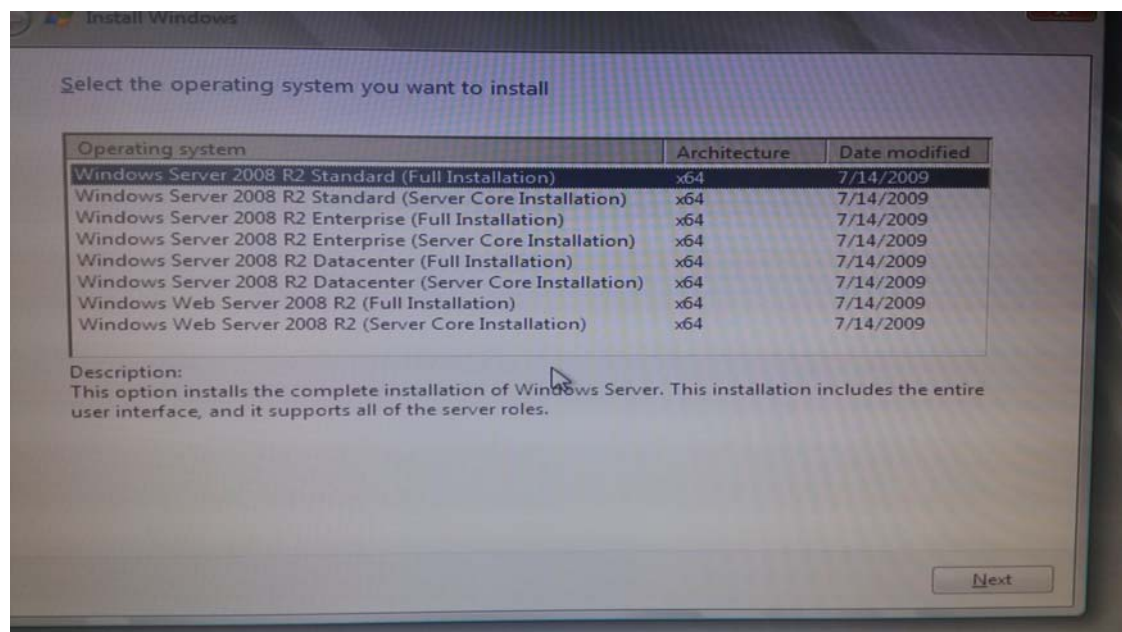


Quick install guide

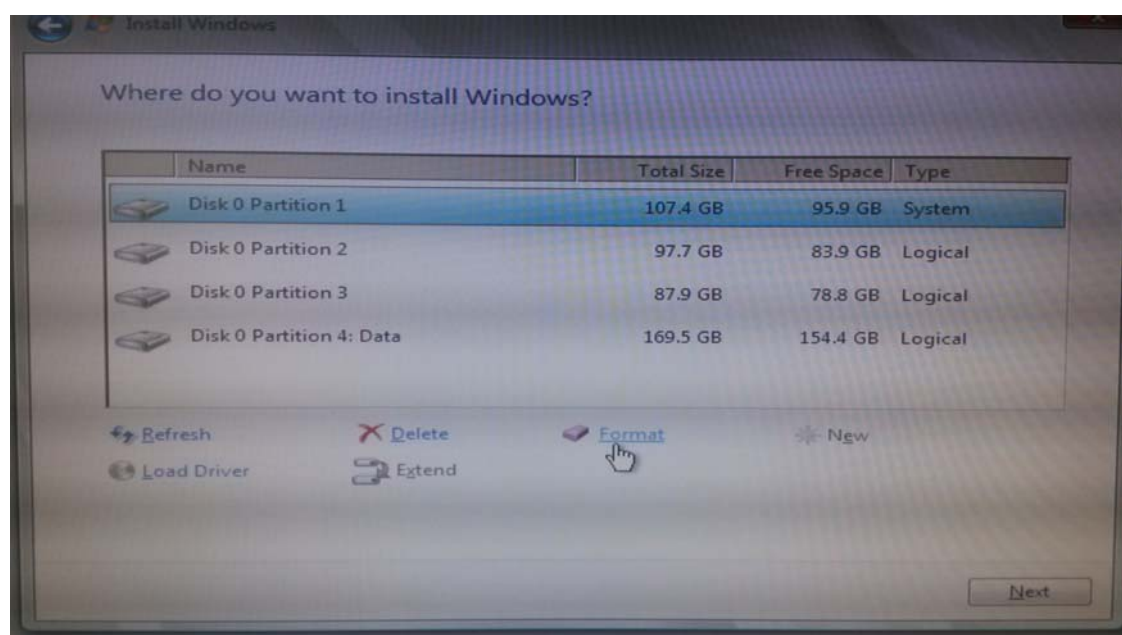
1. Install Windows Server 2008 R2 64 bit (English version) on a fresh disk. Fresh disk means the partition of disk must be formatted before installing OS. We suggest install 2008 Standard or 2008 Enterprise editions. After ElecRoc installed completely, you can change the OS language to local language.



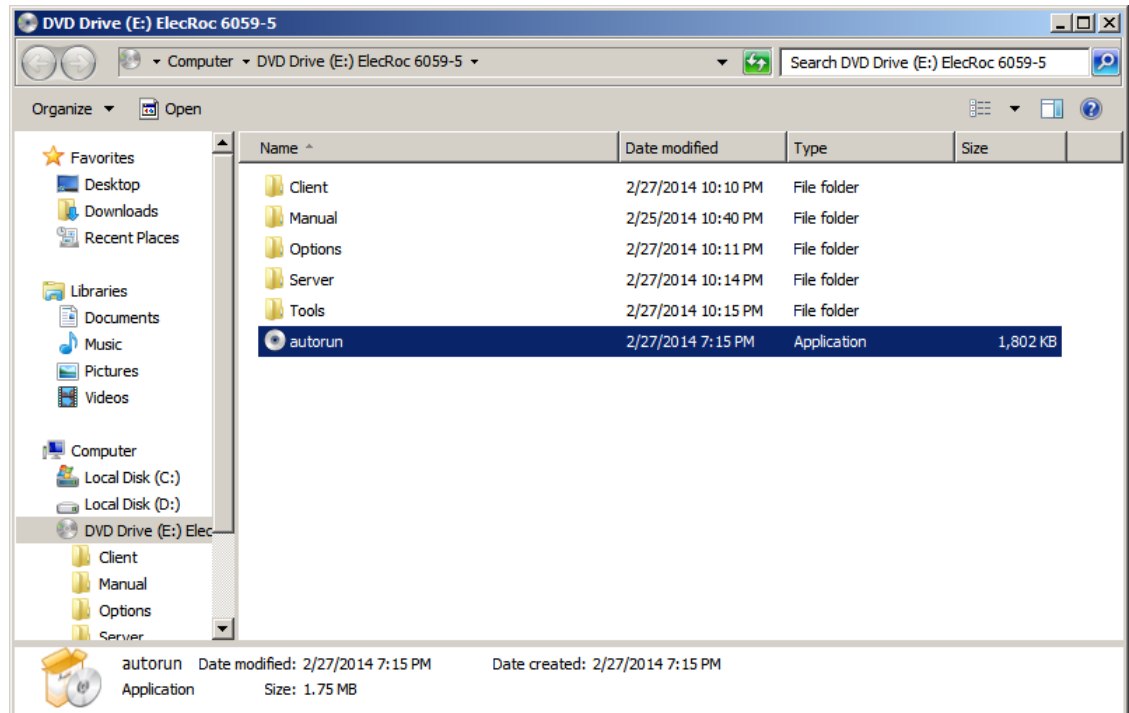


Select a disk partition where you want to install ElecRoc server.

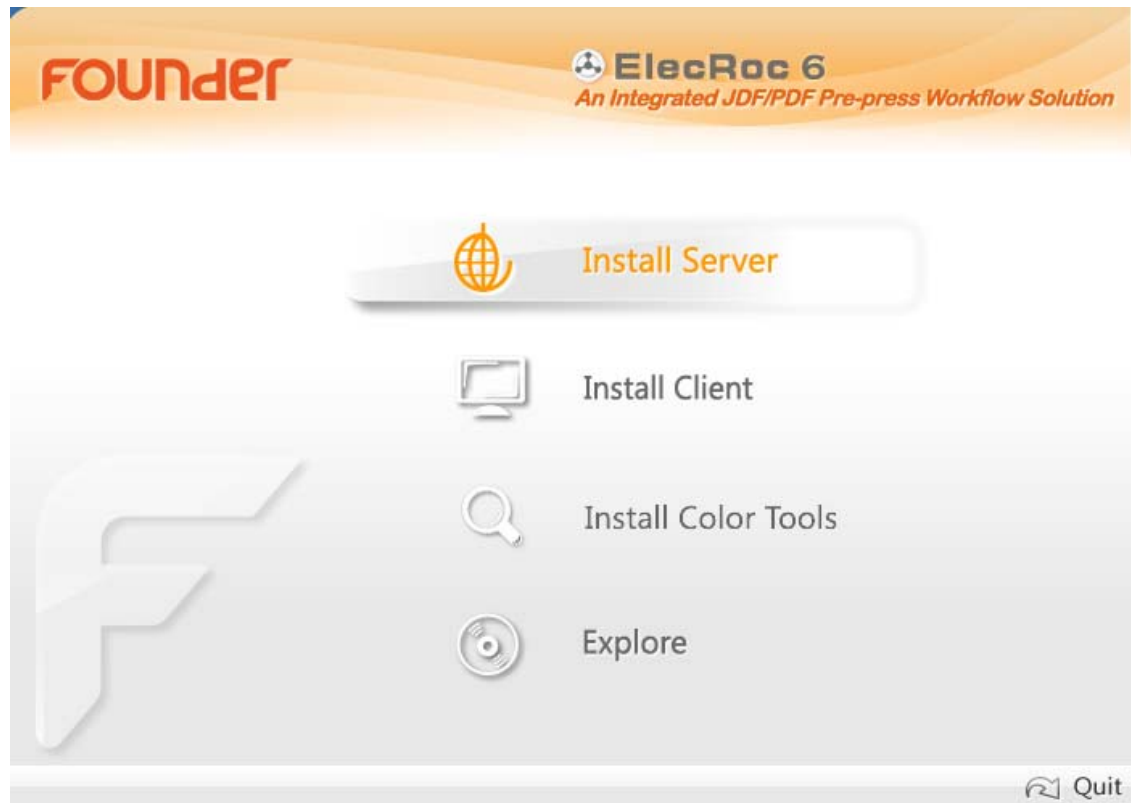
Click Format, to format this partition, and ElecRoc server will be installed on the fresh disk, as following.



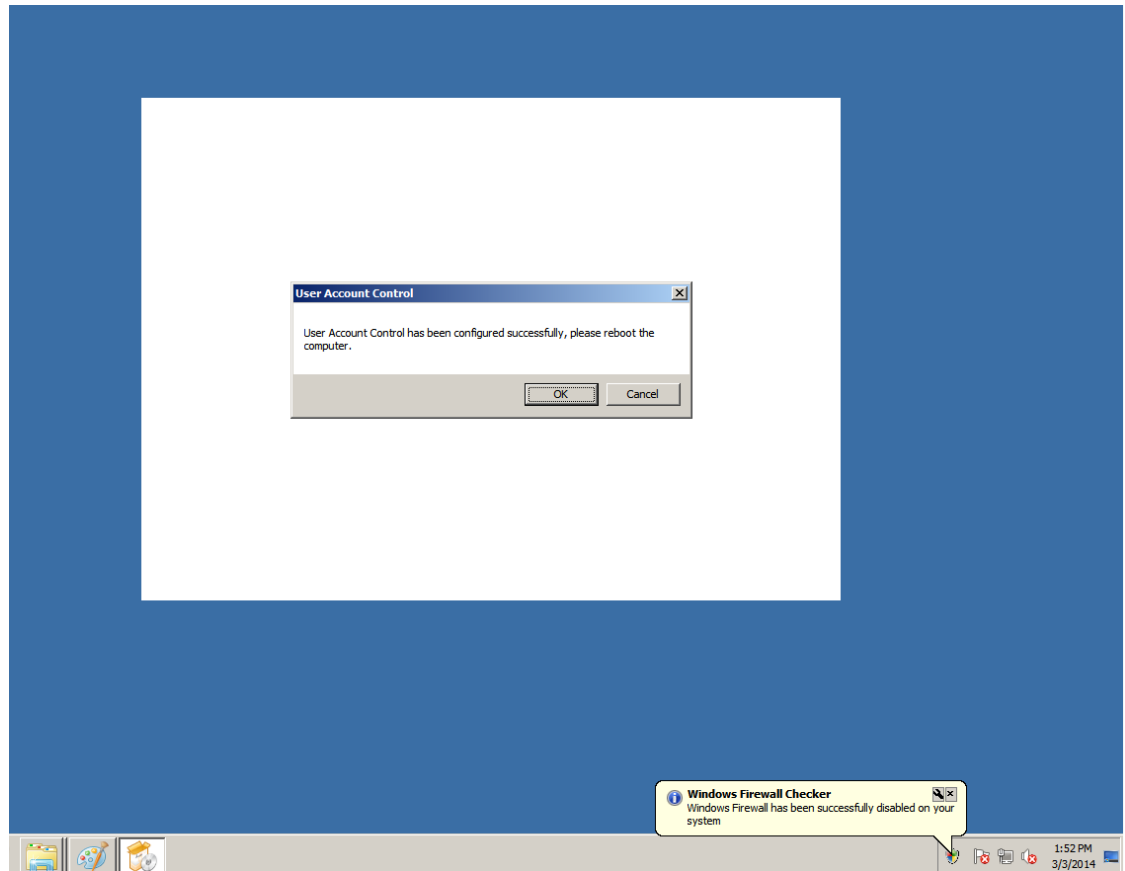
2. Click *autorun.exe* from ElecRoc 6 installer.



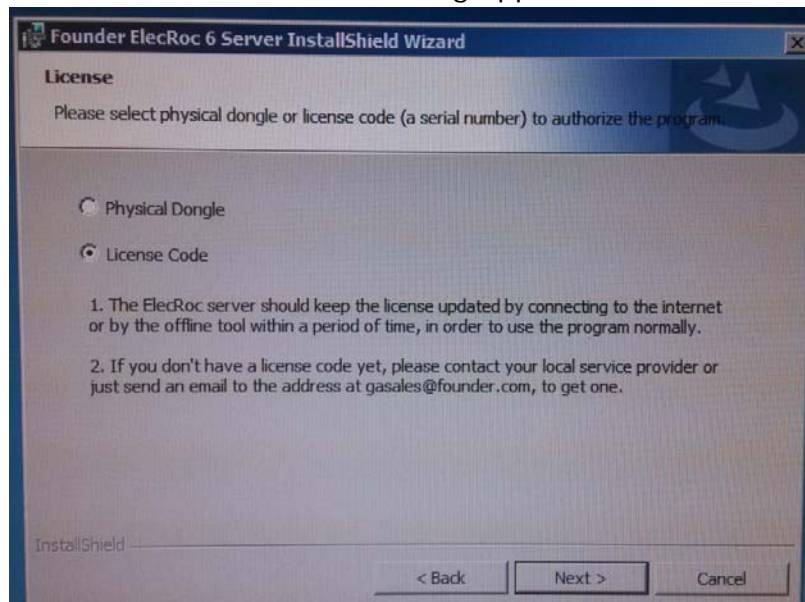
3. Click **Install Server**, the program will install the ElecRoc server automatically, please keep waiting until the installation guide shows you how to do (you need to press any key three times). The total installation will take about 30 minutes.



4. Click **OK** as following, and the program will restart the computer automatic, please do not power off or unplug your machine.

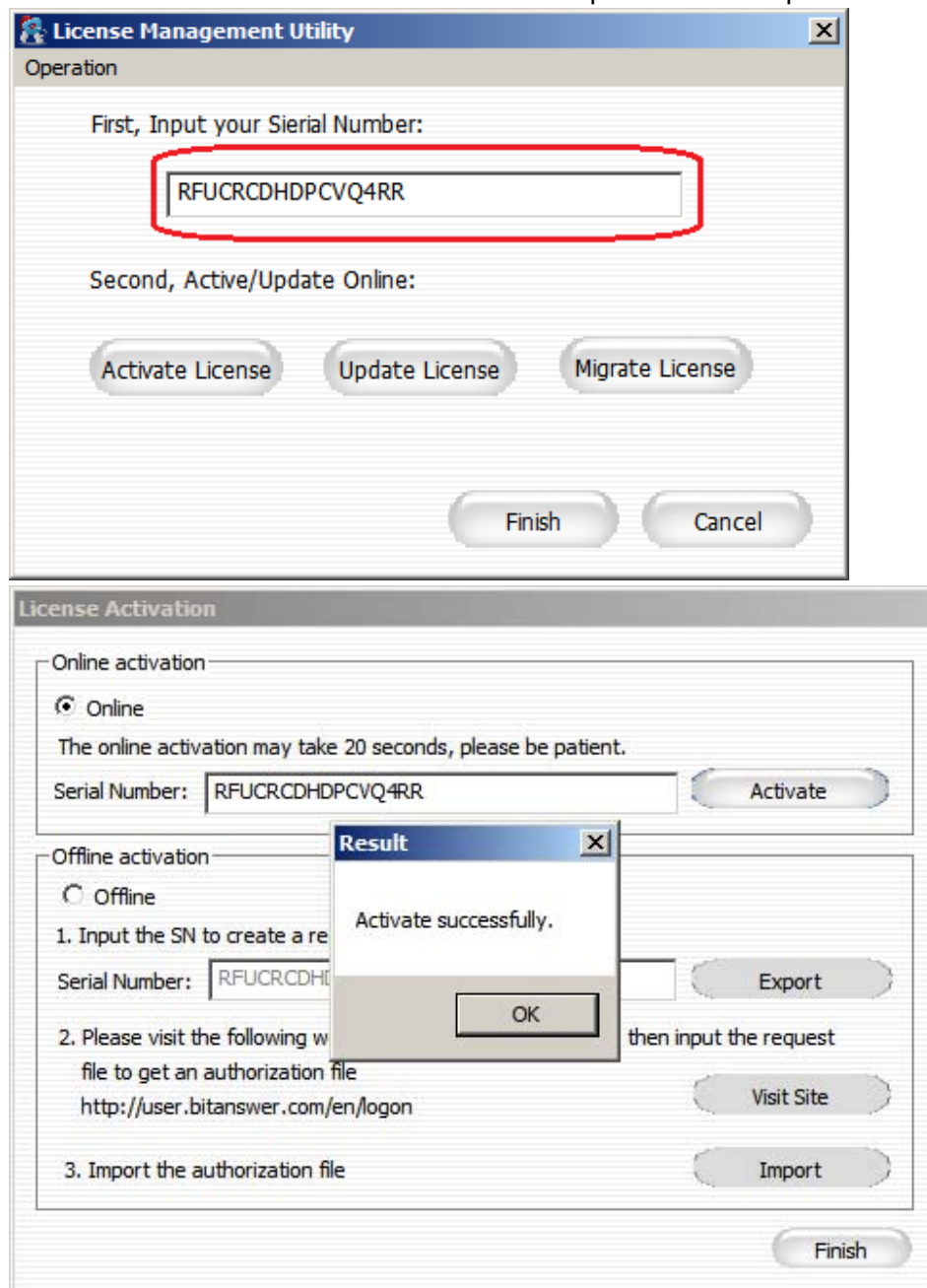


5. Select License Code as following appears.

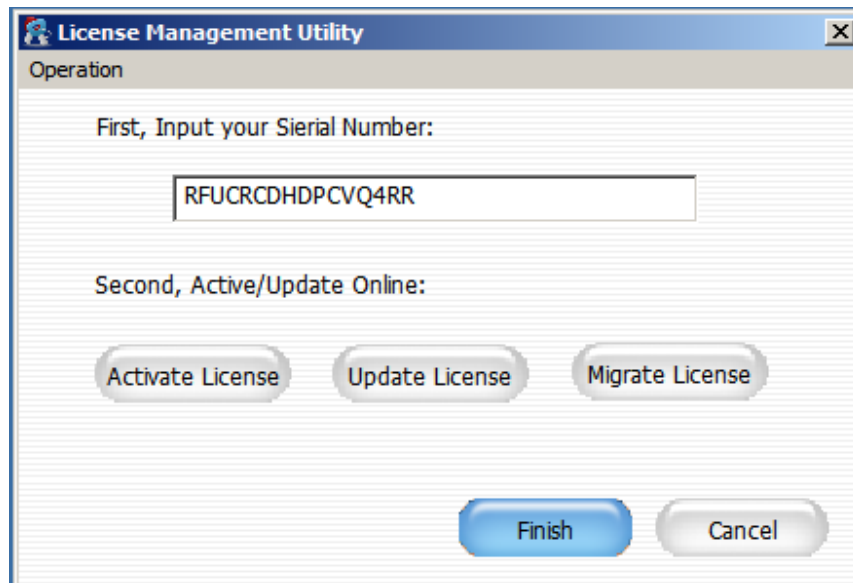


6. Input the serial number which I sent you, click **Activate License**, then click **Activate** on the new page, and wait until the *Activate*

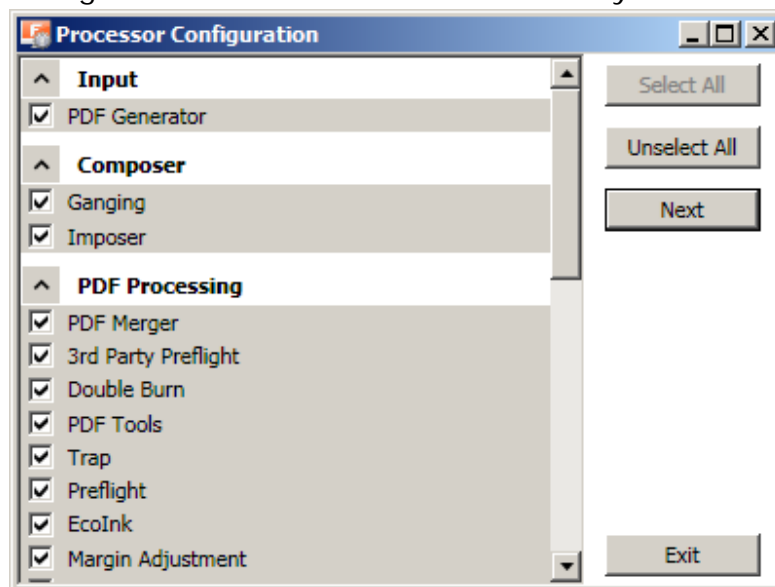
Successfully appears, click **OK**, as following, and please refer to the document of *How to authorize ElecRoc 6.pdf* at this step.



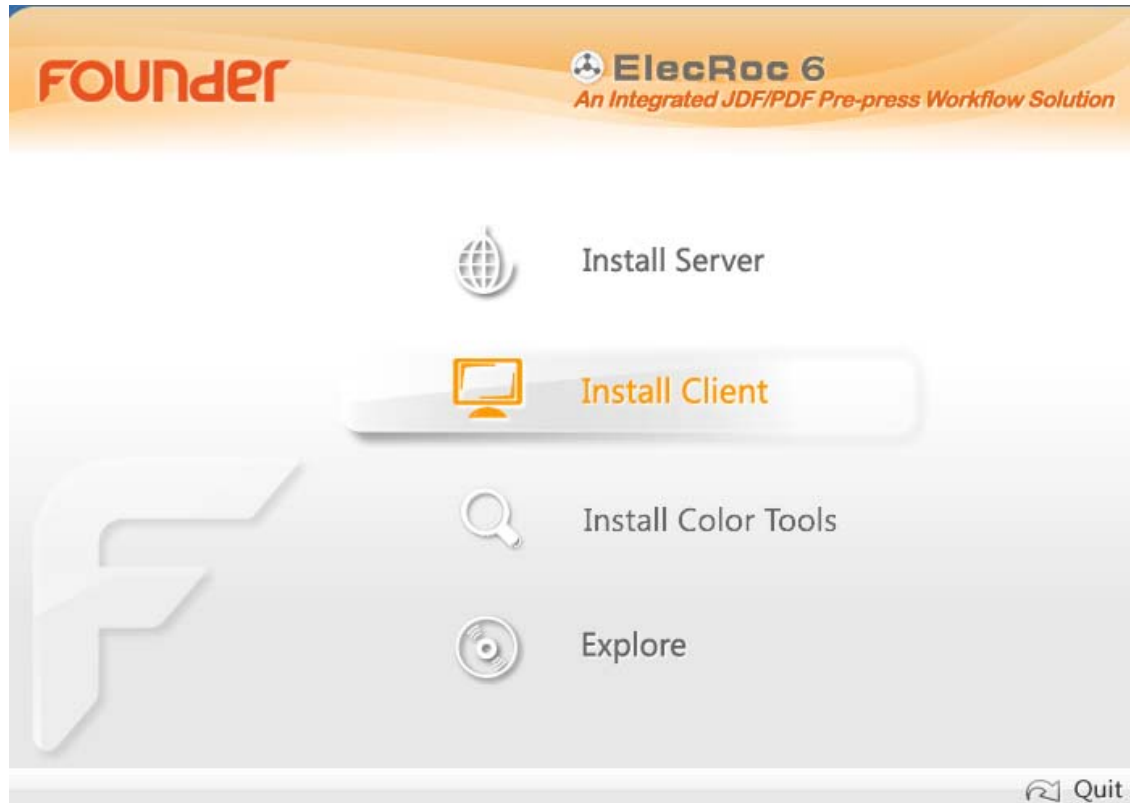
7. Click **Finish**, and wait until next page appears. It takes about 20 seconds or more.



8. Configure the modules which authorized by the license code.



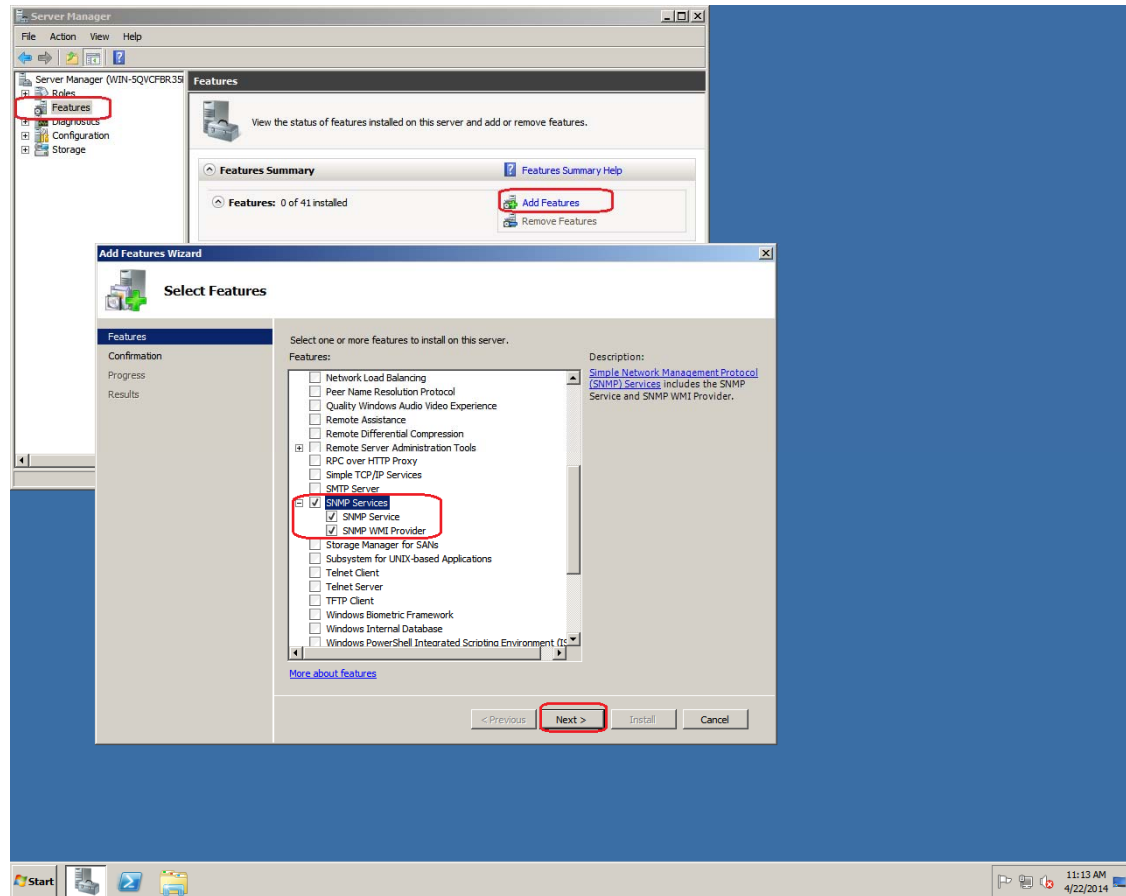
9. Click **Install Client** on the server computer or on another PC computer after clicking autorun.exe, or click setup.exe from installer\Client\PC.



10. Install Mac client by copying the file of *ElecRoc6.0* from Client\MAC to Mac computer, and then run it as version 5. It supports up to MAC OS X 10.9.
11. Install color calibration tools on a PC, not only on ElecRoc server computer but also on any PC Client computer. Please click *setup.exe* from installer DVD\Options\Color Tools\ to install color tools program on client computer, or click **Install Color Tools** after clicking *autorun.exe* from the program. Please refer to the document of *How to create a new color solution.pdf* when you use Pre-RIP Proofing module.

Note:

If the digital press as following, should be installed, please install SNMP Services from Server Manager\Features\Add Features\



Founder EagleJet P5200 / P5000

HP Indigo C3500 / C5500 / C3050 / C3550 / C5600 / C7600

Océ VarioPrint 6250 / 110 / 120 / 135 / 2110

Konica Minolta C6000 / C7000 / C8000 (All of the presses are only supported by Founder interface card.)

Konica Minolta bizhub K1051/ K1052 / K1200 / K951.