



PhotoPack

First Professional Packaging & Decoration Image Processing Application

- Excellent line extraction
- Powerful color separation tool
- Automatic image trap and interactive trap
- Seamless nesting
- RichBlack conversion
- Easy-to-use interactive tracing function





The PhotoPack prepress contone image processing application is a Photoshop plug-in software which has evolved from Founder's 30 years of accumulated research and development experience in the graphic arts. The PhotoPack software offers professional trapping, line extractor, color separation functions as well as a series of contone image processing tools enabling prepress operators to boost efficiency and produce higher quality work.

Key Benefits

Milestone application—The first fully professional prepress image processing application in the whole world.

Powerful functions—PhotoPack encompasses all facets of prepress image processing such as image trapping, line extractor, color separation and a powerful set of image processing tools.

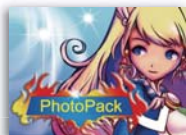
Easy-to-use functions—PhotoPack can well compensate insufficiency of manual operations; reduce the processing mistakes with professional and easy-to-use parameter settings.

Attentive technical support—PhotoPack support team offers the best service and help to customers.

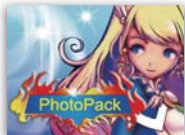
Modularized products provide various choices in order to meet customers' needs.

Line Extractor

- Rapidly and flexibly extract dark lines, convert into single color.
- Lines, and complete trapping automatically.
- Solve register trouble in line overprint.
- Extract the dark-colored line into spot color channel or layers.
- On center trapping.
- Superiority: It is the first one in the market and work efficiently 10 times ever since.



Original



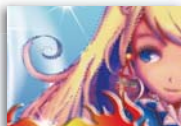
Line selection



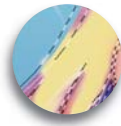
Result



Line selection



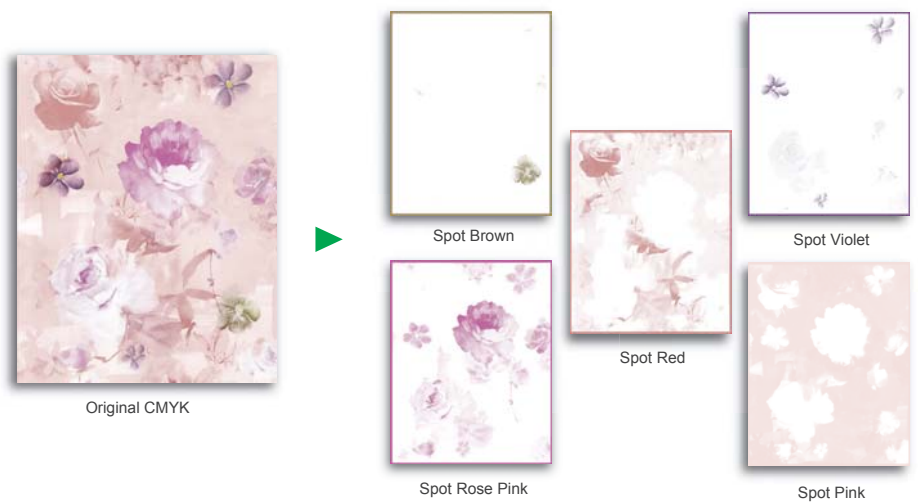
On black center



Zoom in

Color Separation

- Powerful color separation tool, It is composed of a set of practical editing tools, with which images can be conveniently separated into several spot colors according to printing requirements.
- Automatic mode extracts spot colors by one-key operation.
- Manual mode provides real time preview and friendly GUI.



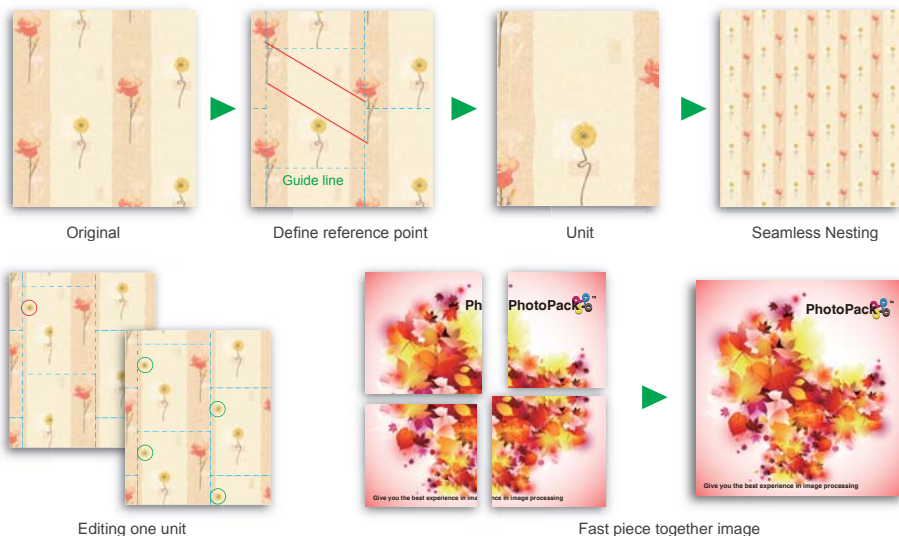
Trap

- Automatically conducting image trap between spot colors or spot color and CMYK.
- Advanced gap and overlap settings for low-quality images.
- Interactive trapping will be more flexible for selected area.
- Corner Trapping appears impressive in CMYK.



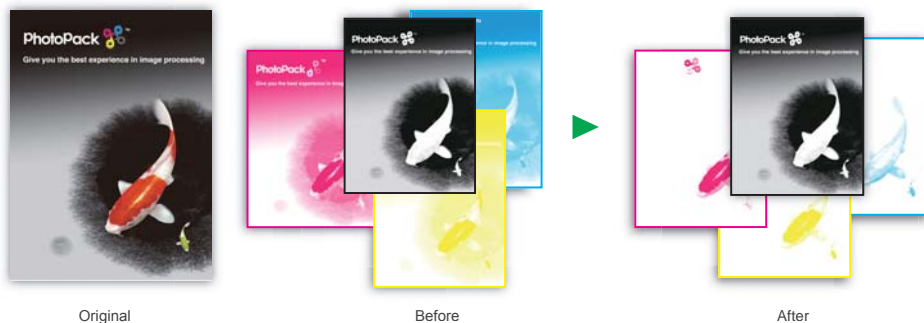
Seamless Nesting

- Integrate Image Mosaic, Seamless Joining, Nesting.
- Quickly get seamless unit.
- Directly operate tilted unit without any pre-rotation work.
- Strong adaptability for scanned images spoiled by rotation, translation, and distortion.



RichBlack Conversion

- Rapid conversion from rich-black to single-black.
- Color will be soft and tender in transition region.
- Real-time preview.
- Take sample point and accuracy control ink changing.

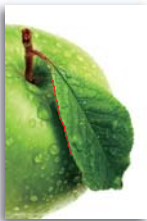


Interactive Tracing

- Get smooth edge path of image via simple click or smudge operation.
- No need adjust anchor point handle.
- Conveniently switch between click, smudge, and traditional pen.



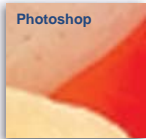
Define anchor 1&2



Generate accurate path automatically

Enhanced Zoom

- Keep image clarity and sharpness after zooming.
- Maintain image edge.
- Support image, selection, layer, and channel zooming.



Detail comparison
between PS & PhotoPack# after 300% magnification

Ribbon

- Quickly creating phylliform outline and auto filling with spot color.
- Customize phylliform shapes, smooth effect.



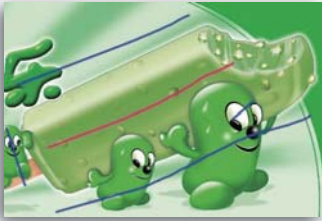
Original



Result

Enhanced Selection

- Easily get targeted selection and smooth path.
- Ensure sub-pixel accuracy of path and selection.
- Support local smooth-path adjustment.
- Change selection into smooth path.



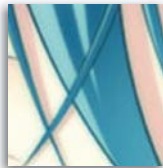
Set foreground& background on the original



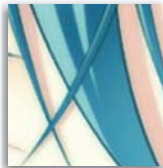
Generate path or selection automatically

Edge Trim

- Defuzzication, Anti-alias.
- Defuzzication, by one-key operation.
- Real-time preview.
- Maintain image feature after anti-aliasing.



Before



After

Enhanced Blurring

- Image blurring processing, Image edge maintaining
- Protect image details, optimize blurring effects.
- Enhanced image edge protection.



Before



After

Color Enhancement

- Adjust any color wanted
- Real-time preview adjustment
- Flexible adjustment
- Convenient eyedropper tool
- Smooth transition
- Parameter can be saved and imported



Adjust customized color with dropper



Cyan channel enhanced effect

Spot Color Layer

- Convert specified layer content into spot color channel automatically.
- Conversions of multiple spot colors simultaneously.
- Image effect remains.



Generate spot ink directly in Photoshop layer

Bold Text

- Sub-pixel Bold text in the Image.
- Vector and raster text available.
- High accurate bold, Min 0.1 Pixel.
- Bold from any angles.



After

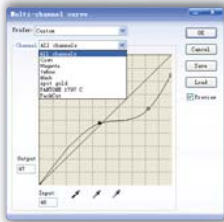
Before

Multi-Channel Curve

- Adjust CMYK and spot color simultaneously.
- Easy operation.
- Adjust color in available channel.



Original



Adjust all channels(include spot channels)

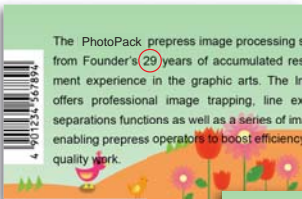


Result

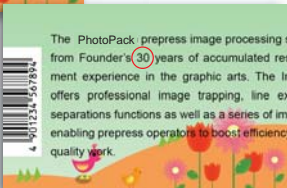
File Comparison

Tell the differences between:

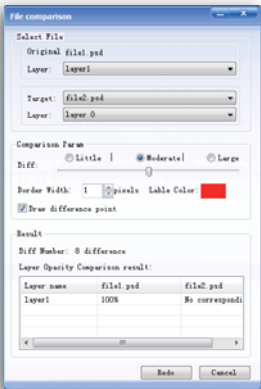
- Layers and files.
- Spot color channel.
- Transparency layers.



File 1

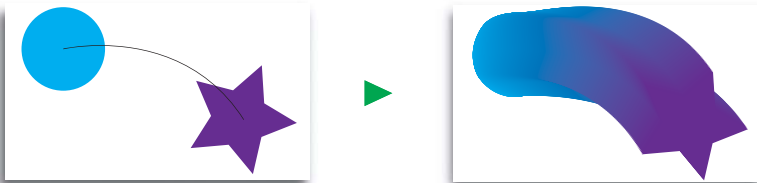


File 2



Blend Tool

- Make blend of graphic layers the same as in AI.
- Blend layer transparency.
- Blend axis editing.



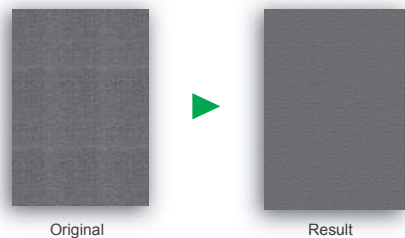
Umbrella

- Generate seamless umbrella image based on cutting path.
- Auto-processing, improve efficiency 100 times comparing to manual operation.
- Process huge image
(up to 2.5m*2.5m, 200dpi)



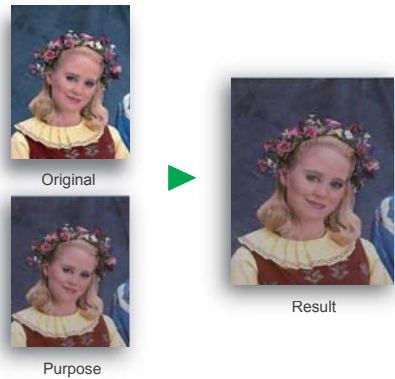
Image Trim

- Remove regular defects after step and repeat operation.
- Several effects available.
- Remain image structure.



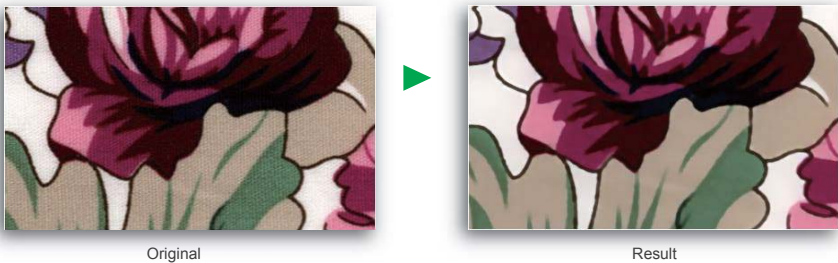
Color Match

- Keep similar color for two images automatically.
- Support CMYK and RGB modes.



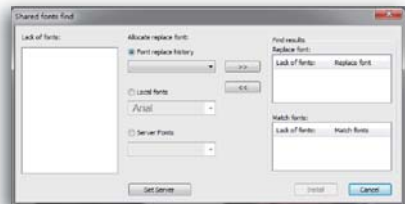
Descreen

- Remove the reticulated mottles of the scanned image.
- Improve image quality obviously and efficiently.
- Parameter set easily.



Shared Fontlib

- Automatically match the missing font from source document
- Automatically match the font from server.
- Review the replaced font and automatically shared with others.



Preflight

- Check defective objects, such as rich black, small character, speckle, etc.
- Comprehensive check, view the result directly.
- Customized search.



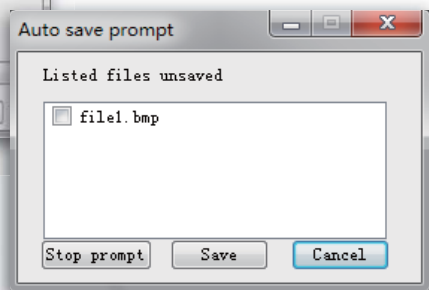
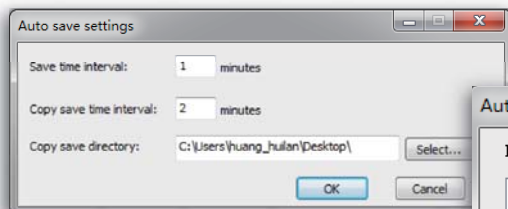
Parameters



Preflight report

Auto Save

- Files will be saved or copied automatically in a certain time.
- Save files as default setting.



www.founderpackaging.com



FOUNDER

Founder International Co., Ltd.

5F Founder International Building, No. 52 Beisihuan
West Road, Haidian District, Beijing 10080, China

Hotline: 400 6800 105

Fax: +86 10 8217 9001

Email: overseas_market@founder.com

More information, please logon:

<http://www.founderpackaging.com>