



FOUNDER

Beijing Founder Electronics Co., Ltd.
No.9, 5th Street, Shangdi Information Industry Base
Haidian District, Beijing 100085, China

International Business Division
Fax: +86 10 62981440
Email: GASales@founder.com.cn

For more products, sales and technical support information,
please visit our website at <http://www.foundereagle.com>

SuperLine

Anti-Counterfeit Design System

Founder SuperLine Anti-Counterfeit Design System is a digital design software for producing printed products with advanced security features to help prevent forgery and counterfeiting.





Superline Anti-Counterfeit Design System

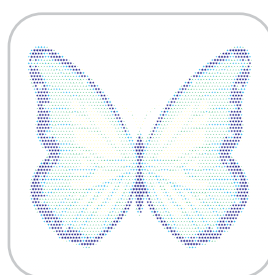
Key Effect Features



Relief



Engraving



Rasterization



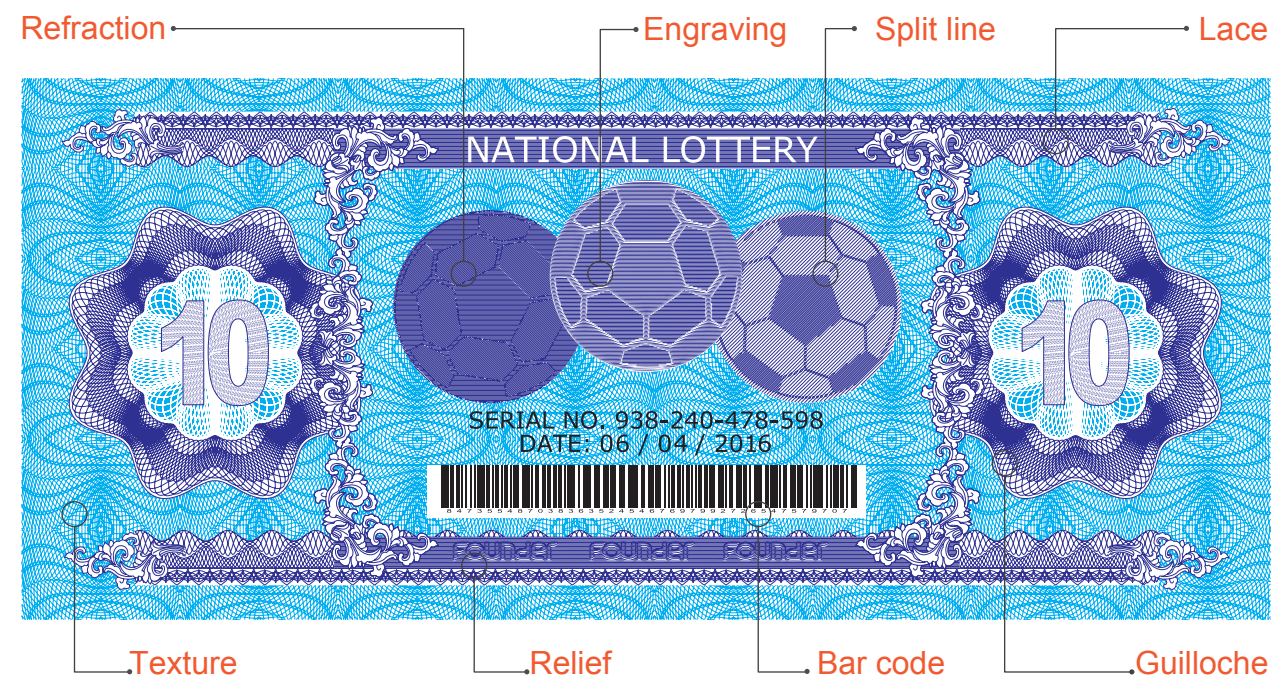
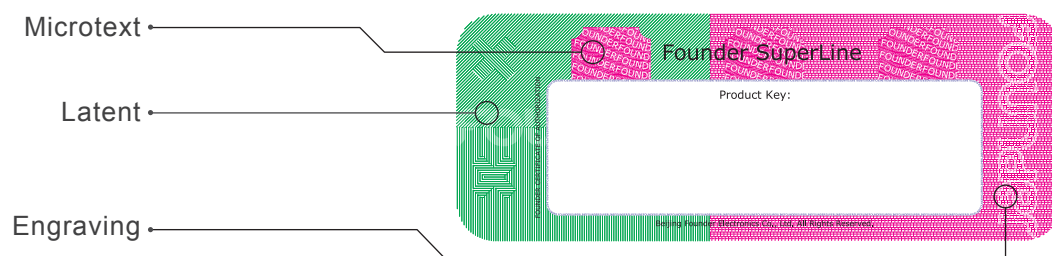
Lock-opening

Anti-Counterfeit Design System

SuperLine is a powerful security design application for designing printed products that are vulnerable to counterfeit such as banknotes, passports, certificates, licenses, lottery tickets and packaging.

Benefits

- Cost effective
- Aesthetic designs
- Provides a high degree of security including anti-scanning and anti-replicating features



Guilloche

An ornamental pattern formed by two or more curved bands that interlace to repeat a circular design with effective anti-counterfeiting and pleasing aesthetic effects.

Lock-opening

If you overlay a film with special screening on a locked image and view from a certain angle, you will see the locked or otherwise hidden image.

Texture

Aesthetic textures can be generated easily with convenient tools in SuperLine.

Latent

By using lines with varying widths in different directions, characters or images can be hidden in other background images.

Microtext

Generated by very small letters instead of lines, e.g. replacing a line segment with a line of letters that are smaller than 0.2mm.

Rasterization

Images can be rasterized by any shape dots. Tiny dots generated by Rasterization will effectively disturb the raster process of the copier preventing unapproved duplication.

Engraving

By using lines of varying width images can be transformed simulating engraving.

Relief

Relief effect can be applied to images or graphics. Lock-opening is one of the applications of this effect.

Lace

Lace is generated by repeating one or more elements often used in ornamental frames.

Bar code

SuperLine can produce several different styles of bar codes for a wide variety of applications.

Refraction

This function is especially for graphic design in the packaging industry and for imaging in metal craftwork.

Split line

Split one line into two or several fine lines that prevent unapproved duplication.