



Founder ElecRoc™

An Integrated JDF/PDF Pre-press Workflow Solution

Version 6

Installation Guide

March 2015

Beijing Founder Electronics Co., Ltd.

FOUNDER

The software described in this manual is furnished under a license agreement and may be used only in accordance with the terms of the agreement.

Copyright Notice

Copyright © 2001-2014 Beijing Founder Electronics Co., Ltd. All Rights Reserved.

Any technical documentation that is made available by the Beijing Founder Electronics Co., Ltd. is the copyrighted work of the Beijing Founder Electronics Co., Ltd. and is owned by the Beijing Founder Electronics Co., Ltd.

NO WARRANTY. The technical documentation is being delivered to you AS-IS and the Beijing Founder Electronics Co., Ltd. makes no warranty as to its accuracy or use. Any use of the technical documentation or the information contained therein is at the risk of the user. Documentation may include technical or other inaccuracies or typographical errors. Founder reserves the right to make changes without prior notice. No part of this publication may be copied without the express written permission of the Beijing Founder Electronics Co., Ltd., No.9, The Fifth Street, Shangdi Information Industry Base, Haidian District, Beijing 100085, People's Republic of China.

Trademarks

Founder and Founder logo are registered trademarks of Founder Group Corporation. ElecRoc is a registered trademark of the Beijing Founder Electronics Co., Ltd.

Microsoft, Windows, Windows Server 2003, Windows Server 2008, Windows XP and Windows 7 are trademarks or registered trademarks of Microsoft Corporation.

Adobe, Adobe Photoshop, Adobe Acrobat and PostScript are registered trademarks of Adobe Systems Incorporated and PostScript 3 is a trademark of Adobe Systems Incorporated.

Pentium is a registered trademark of Intel Corporation.

Other products, fonts and company names and logos in this Manual are trademarks or registered trademarks of their respective holders and are hereby acknowledged.

This manual provides a complete introduction to all the functions and features of Founder ElecRoc Workflow Management System. However, some of them are available upon additional payment, the user interface and functions may vary accordingly. For more information, contact Founder's sales personnel.

Printed in the People's Republic of China

Contents

Chapter 1 System Requirements.....	1
1.1 Operating Environment	1
1. Hardware Requirements	1
2. Supported Operating Systems	1
1.2 Operating System Configuration	1
1. Windows Server 2008	1
2. Windows Server 2012	4
3. Windows Server 2003	4
4. Windows 7/8	7
5. Windows XP	11
6. SNMP Services	11
7. Configure Display Properties	11
Chapter 2 Install Required Applications.....	13
2.1 Microsoft SQL Server 2005 Express.....	13
2.2 Adobe Acrobat	14
2.3 Enfocus PitStop.....	14
Chapter 3 Install Founder ElecRoc.....	17
3.1 ElecRoc Server.....	17
3.2 ElecRoc Client on PC	29
3.3 ElecRoc Client on Mac	32
3.4 Remote Processors	36



Chapter 1 System Requirements

1.1 Operating Environment

1. Hardware Requirements

Minimum Configuration	
Master Server	Pentium 4 2.0 GHz; 4 GB Memory; 500 GB HD
Slave Server	Pentium 4 1.5 GHz; 4 GB Memory
Mac Client	G5 1.6 GHz; 1 GB Memory
PC Client	Pentium 4 1.5 GHz; 1 GB Memory
Composer	64 MB Video Memory
Network connection	100 MB Ethernet
Recommended Configuration	
Master Server	Dual-core Xeon 2.66 GHz; 4 GB Memory; SCSI 500 GB HD
Slave Server	Dual-core 3.0 GHz; 4 GB Memory
Mac Client	iMac 2.5 GHz; 2 GB Memory
PC Client	Dual-core 2.8 GHz; 2 GB Memory
Composer	128 MB Video Memory; 19 inch Monitor
Network connection	100 MB Ethernet

2. Supported Operating Systems (English version only)


Master Server /Slave Server	Windows Server 2003 SP2 Windows Server 2008 R2 SP1 x64 The operating systems (OS) must be English versions and be fresh. We strongly recommend you to prepare the OS on a fresh disk partition, i.e. have the partition formatted during the OS installation.	Windows 7
Mac Client	Mac OSX 10.7 Mac OSX 10.8 (with Java 1.5 or above)	
PC Client	Windows Server 2003 SP2 Windows Server 2008 R2 SP1 x64 Windows Server 2012 x64	Windows 7 Windows 8 x64 Windows XP SP3

1.2 Operating System Configuration

1. Windows Server 2008

Master/Slave Server: If you want to install the Server and/or the processors on Windows Server 2008, you do NOT need to manually configure anything. ElecRoc install program will configure automatically during the installation (see [step 2](#) in section 3.1).

Client: If you install only the Client on Windows Server 2008, you may need to manually install **.NET Framework 3.5** only when you want to use remote 3D preview.

1. Open the **Server Manager** (click the server manager's icon  in the taskbar, or

right-click **Computer** on the desktop and choose **Manage**), choose **Features > Add Features**, to start **Add Features Wizard**.

2. Choose **Features**, and then check **.NET Framework 3.5.1 Features** (ensure all the sub-options are ticked).

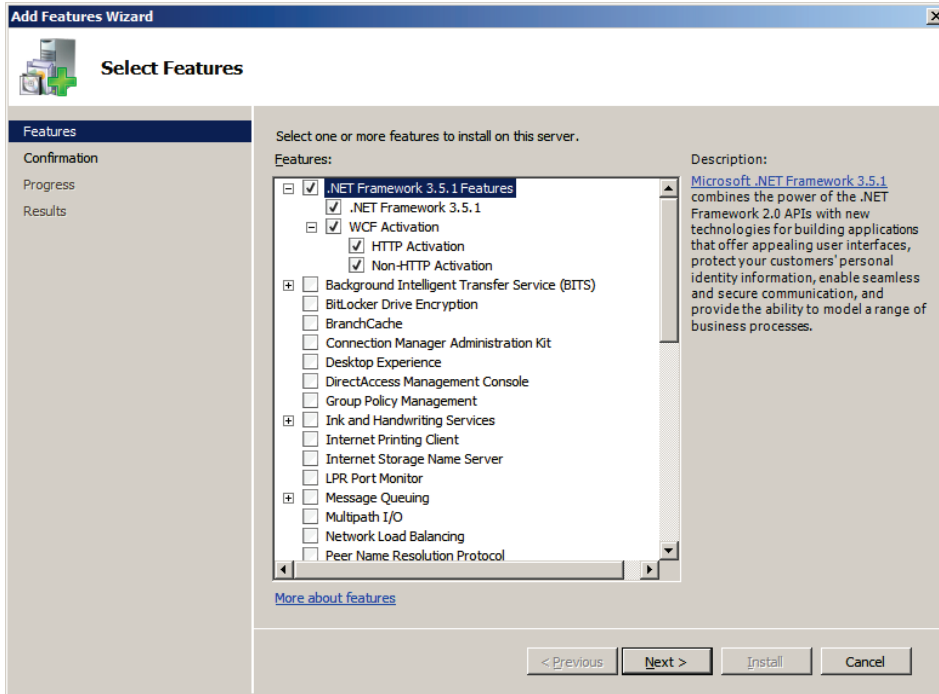


Figure 1

3. Click **Next**. In the confirmation window, click **Install** to start the installation.

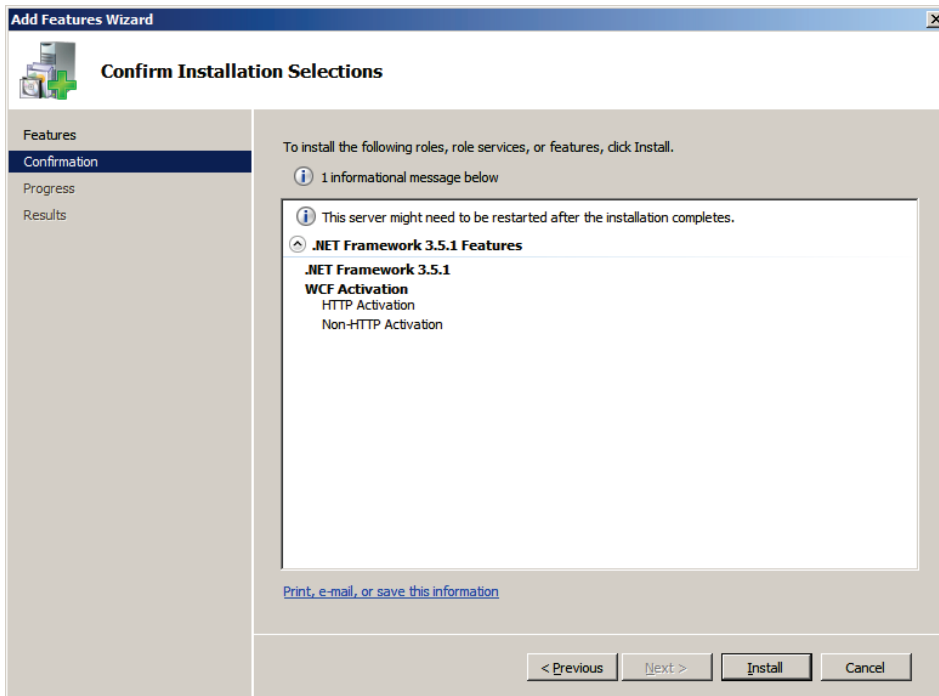


Figure 2

4. The wizard shows the progress of the installation.

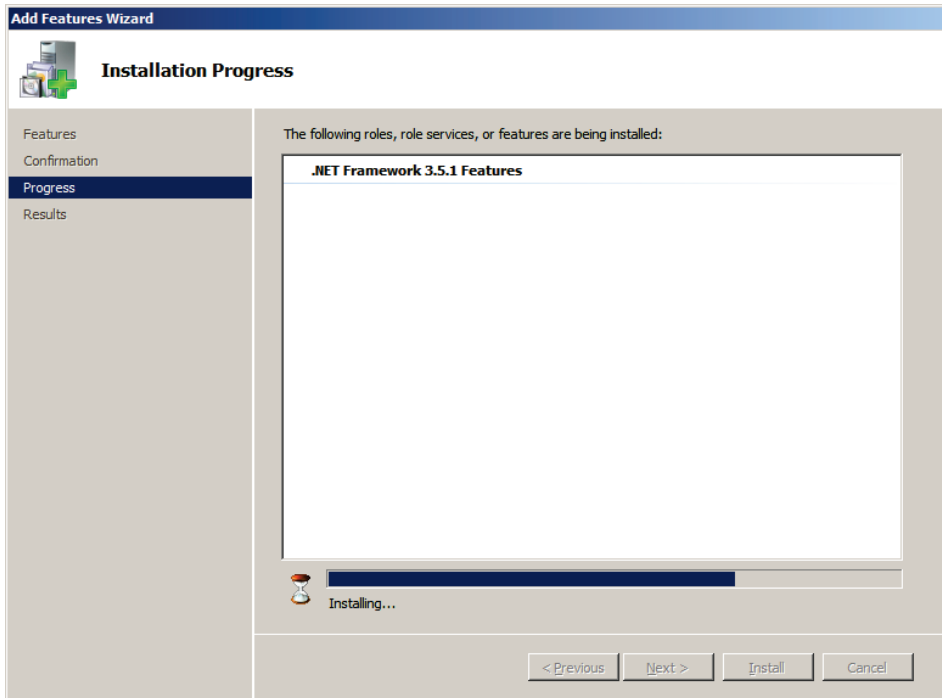


Figure 3

5. Click **Close** when it finishes the installation.

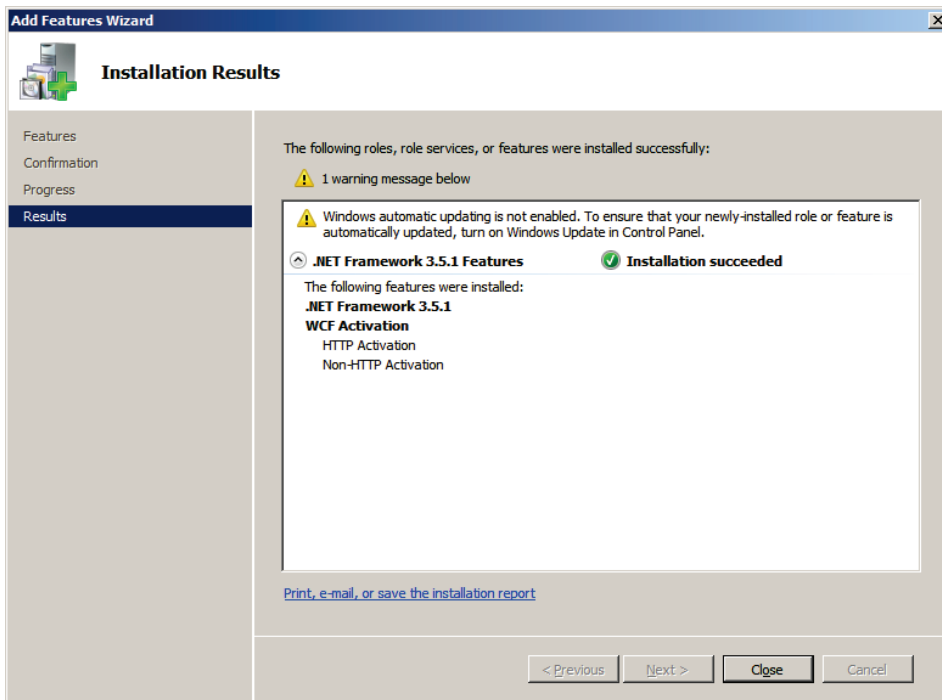


Figure 4

2. Windows Server 2012

Client: If you install the Client on Server 2012, you may need to manually install **.NET Framework 3.5** only when you want to use remote 3D preview.

Please perform as follows:

1. Open the **Server Manager**, choose **Dashboard > Add roles and features**, to start **Add Roles and Features Wizard**.
2. Follow the instructions on the window to perform (click **Next** in most of the steps) till you enter into the Features setup window, see the following figure.
3. Check **.NET Framework 3.5 Features** and all its sub-options. At the moment you check the sub-option, it will pop up a dialog box asking you to add related tools. Click the button **Add Features** in this case.

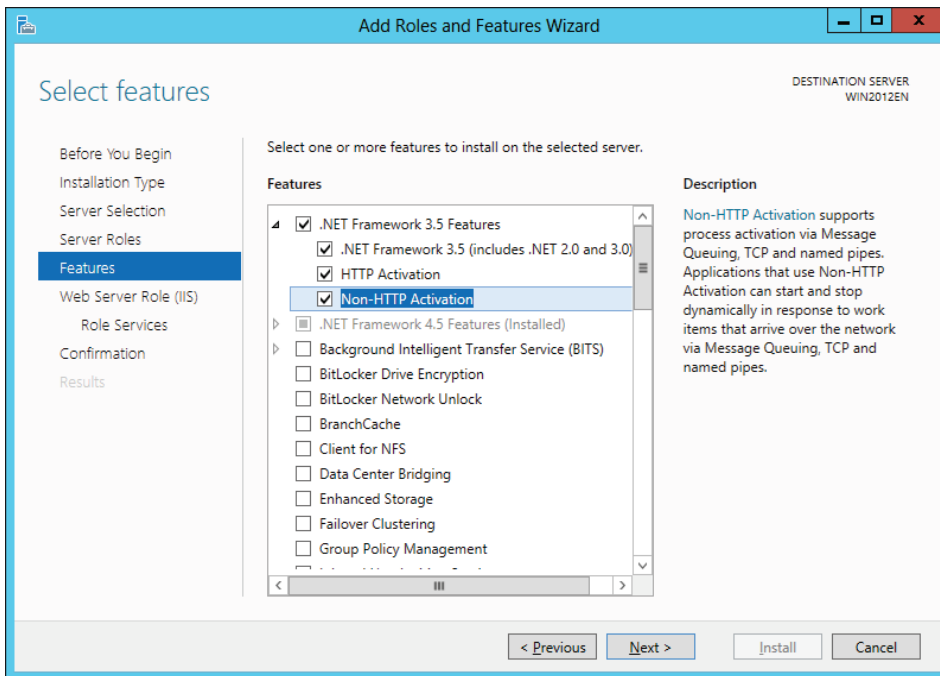


Figure 5

4. Click **Next**. And in the follow-up window, click **Install** and then wait till it finishes the installation.

3. Windows Server 2003

Master/Slave Server: If you want to install the Server and/or the processors on Windows Server 2003, you do NOT need to manually configure anything. ElecRoc install program will configure automatically during the installation (see [step 2](#) in section 3.1). In the case of Server 2003, it will run a stand-alone program to install .NET Framework 3.5 during the installation.

Client:

- 1) If you install only the Client on Windows Server 2003, you may need to manually install **.NET Framework 3.5** only when you want to use remote 3D preview. On Server 2003, it is to be installed with stand-alone install program (available under the install directory \Server\Tools). Its installation is simple.
- 2) Install **AppleTalk** and **Macintosh** services only when you want to enable the

Mac-related capacity.

AppleTalk Protocol

The AppleTalk protocol enables Mac machines to communicate with your computer or printer, so that ElecRoc users can install fonts into ElecRoc from Mac computer.

1. Choose **Start > Settings > Network Connections**.
2. In the **Network Connections** window, right-click the **Local Area Connection** icon and choose **Properties**. The **Local Area Connection Properties** dialog appears.

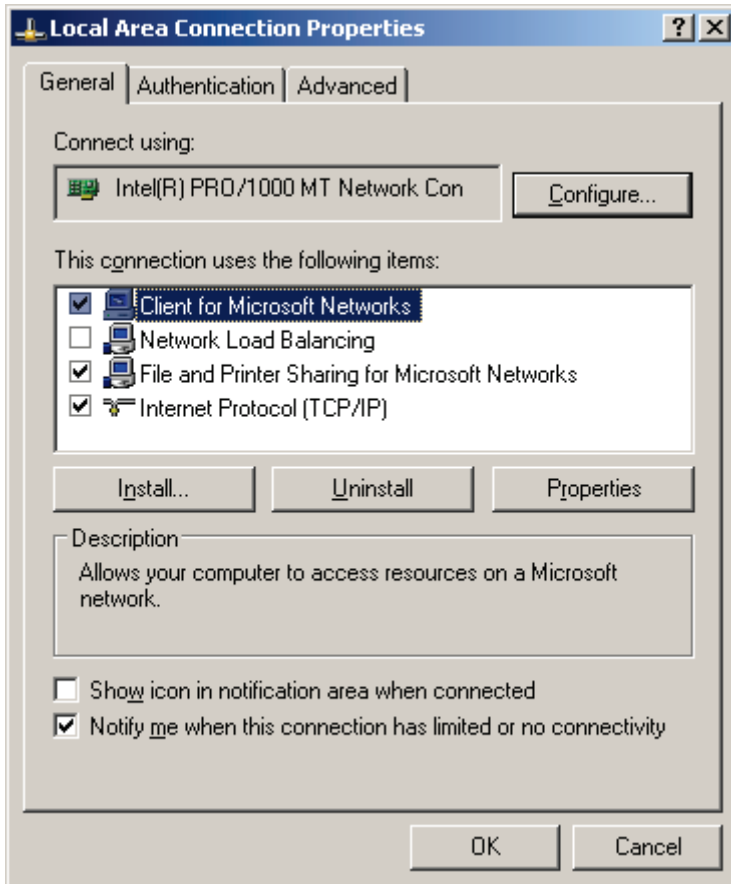


Figure 6

3. Check **Internet Protocol (TCP/IP)** and click **Install**. A dialog box then pops up, hinting you to select a network component type. Choose **Protocol** and then click **Add**.

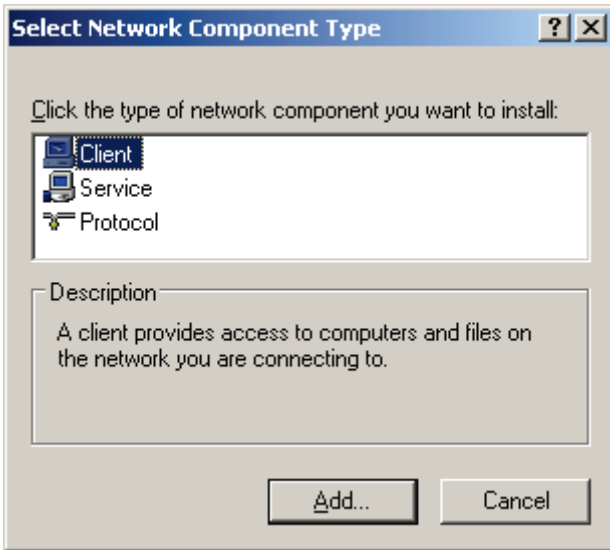


Figure 7

4. The **Select Network Protocol** window appears, showing all available protocols.
5. Choose **AppleTalk Protocol** and click **OK**. System will automatically complete the installation.

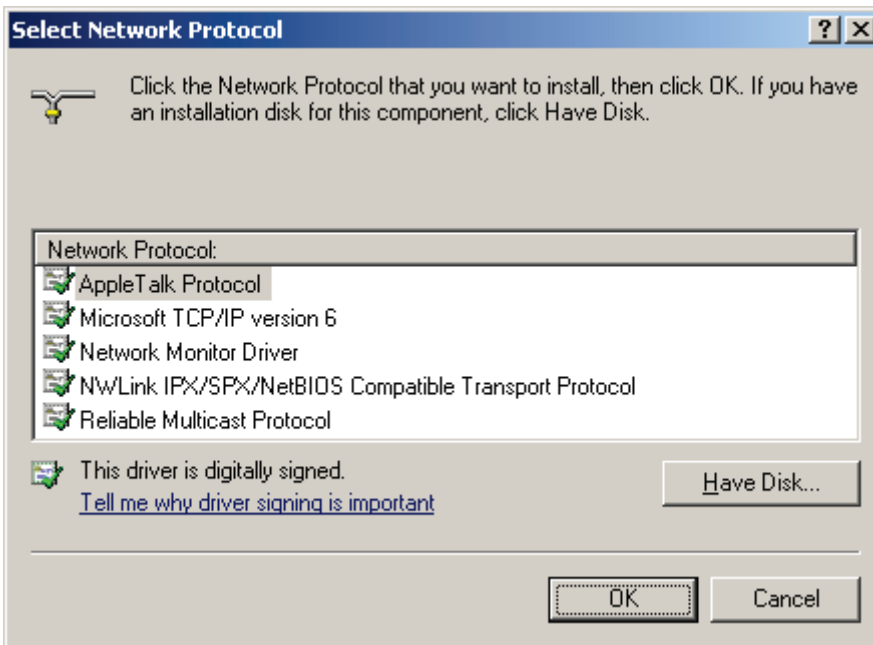


Figure 8

Macintosh File and Print Services

This component enables you to share files and printers with connected Mac computers. It is also required to the Client that needs to own this capacity.

1. Open **Windows Components Wizard**, choose **Other Network File and Print Service** and click **Details**.
2. Check **File Services for Macintosh** and **Print Services for Macintosh**, and then click **OK**.

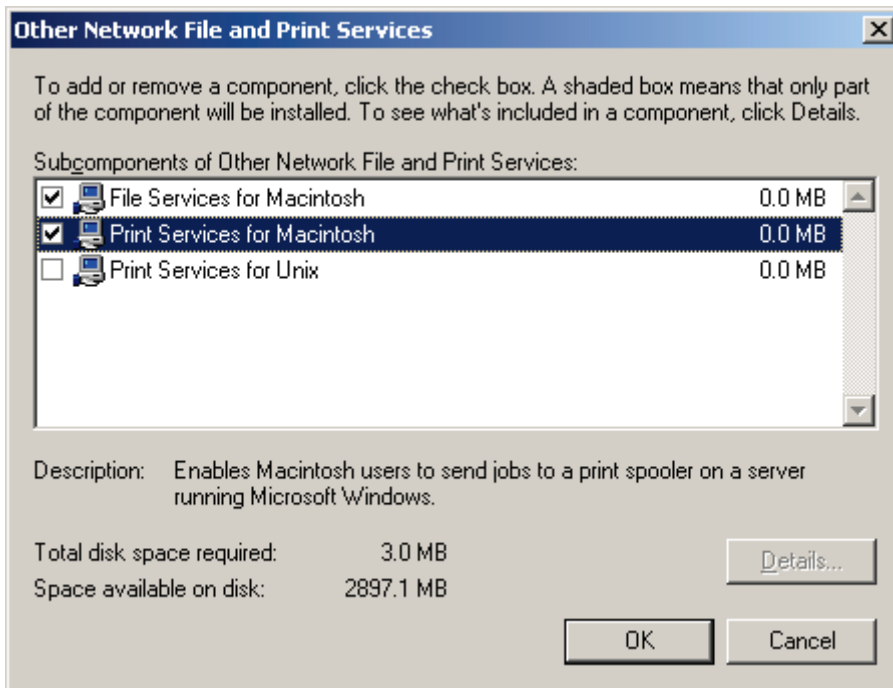


Figure 9

4. Windows 7/8

Master Server: Window 7 32-bit is supported, though we don't suggest it because it can serve only a limited number of ElecRoc Clients. If you want to install the Server and the processors on Windows 7, you need to make the following configurations before the Server installation:

- 1) Install the Windows components **IIS** and **.NET Framework 3.5**. On Windows 7, they can be installed manually (see steps in the below), or left to ElecRoc install program to configure them automatically during the installation (see [step 2](#) in section 3.1).
- 2) Install **SQL Server 2005 Express** (see [section 2.1](#)). It can be installed during the installation or separately, but a separate installation is recommended.
- 3) Close the UAC and turn off the firewall (see steps in the below).

Slave Server: If you are to install only processors on Windows 7, you need to:

- 1) Install the **.NET Framework 3.5** (IIS and SQL are NOT needed in this case). On Windows 7, it can be installed manually (see steps in the below), or left to ElecRoc install program to configure them automatically during the installation (see [step 2](#) in section 3.1).
- 2) Close the UAC and turn off the firewall (see steps in the below).

Client: If you install the Client on Windows 7/8, you may need to install **.NET Framework 3.5** only when you want to use remote 3D preview. Please refer to the steps below to manually install it.

Install both IIS & .NET

1. Choose **Start > Control Panel > All Control Panel Items > Programs and Features > Turn Windows features on or off** to open the setup window.
2. In addition to those enabled by default, you need also to check the features as follows:

1) Choose **Internet Information Services > Web Management Tools**, check all the sub-components.

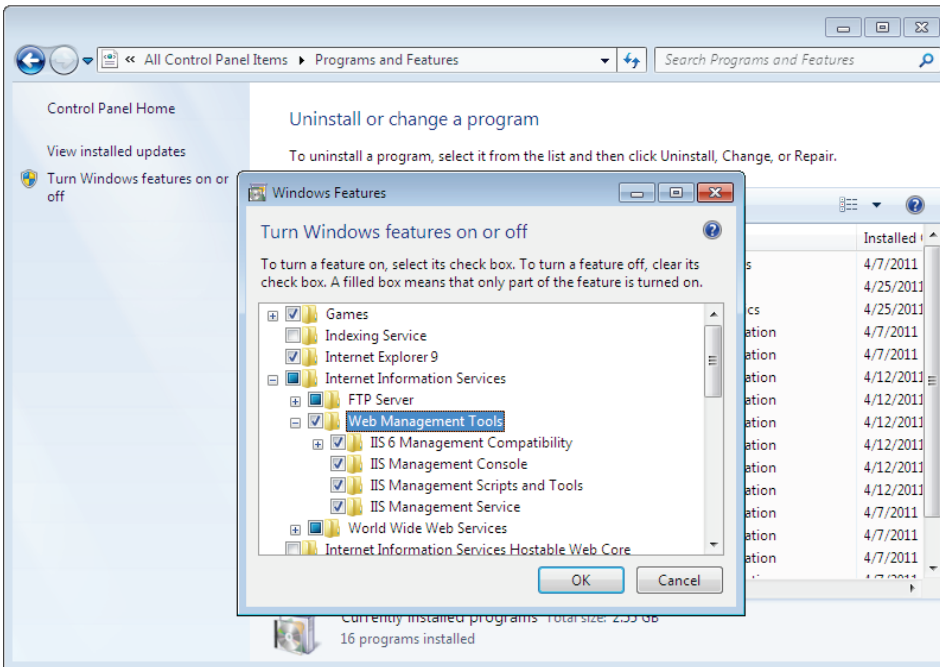


Figure 10

2) Choose **Internet Information Services > World Wide Web Services > Application Development Features**, check all the sub-components.

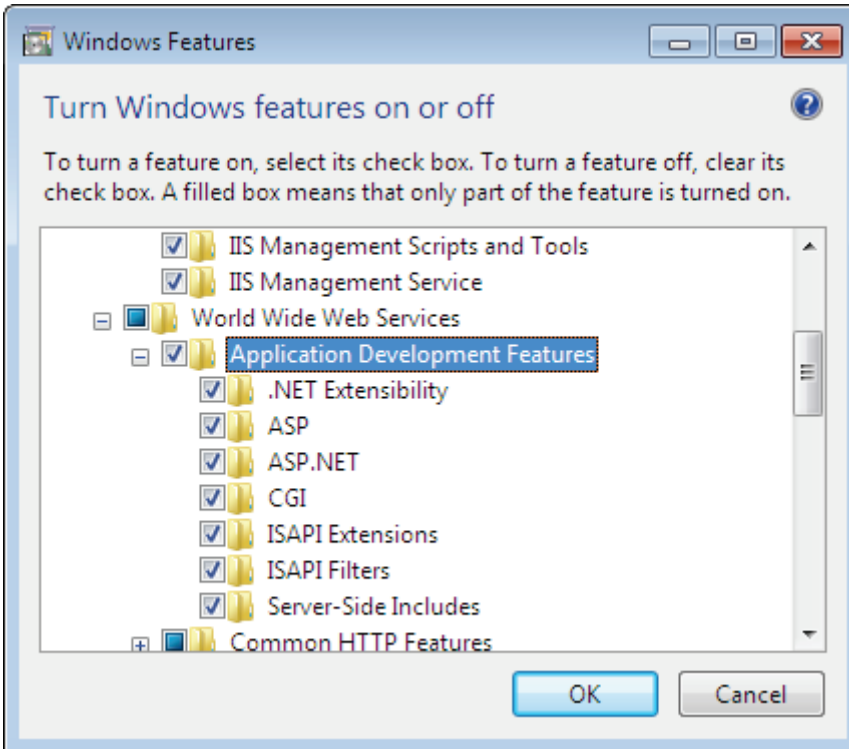


Figure 11

3) Choose **Internet Information Services > World Wide Web Services > Common**

HTTP Features, check **Default Document**, **HTTP Errors**, **HTTP Redirection**, and **Static Content**.

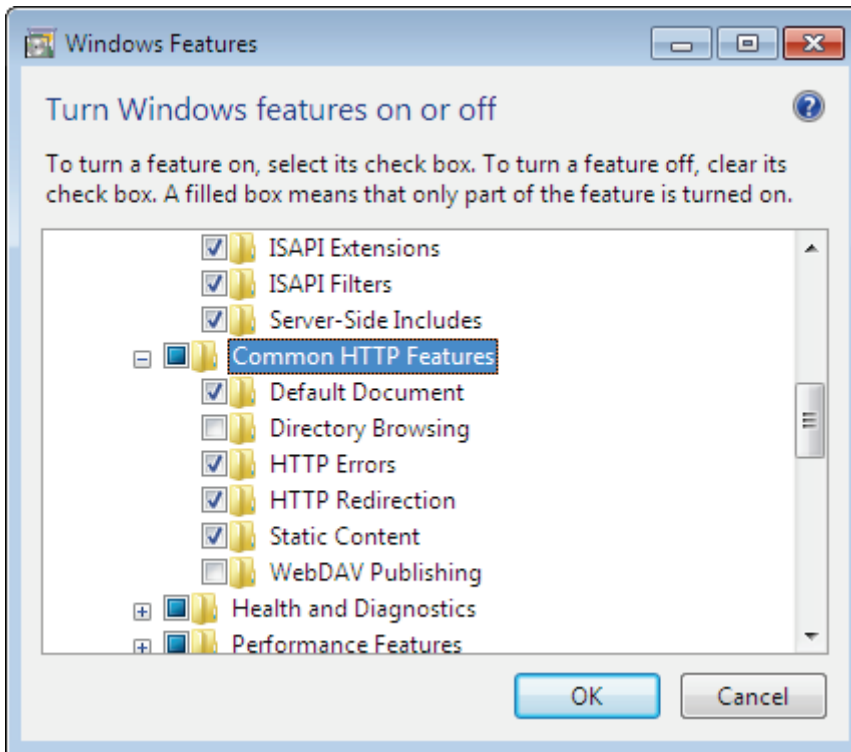


Figure 12

4) Choose **Microsoft .NET Framework 3.5.1**, check all the two sub-components.

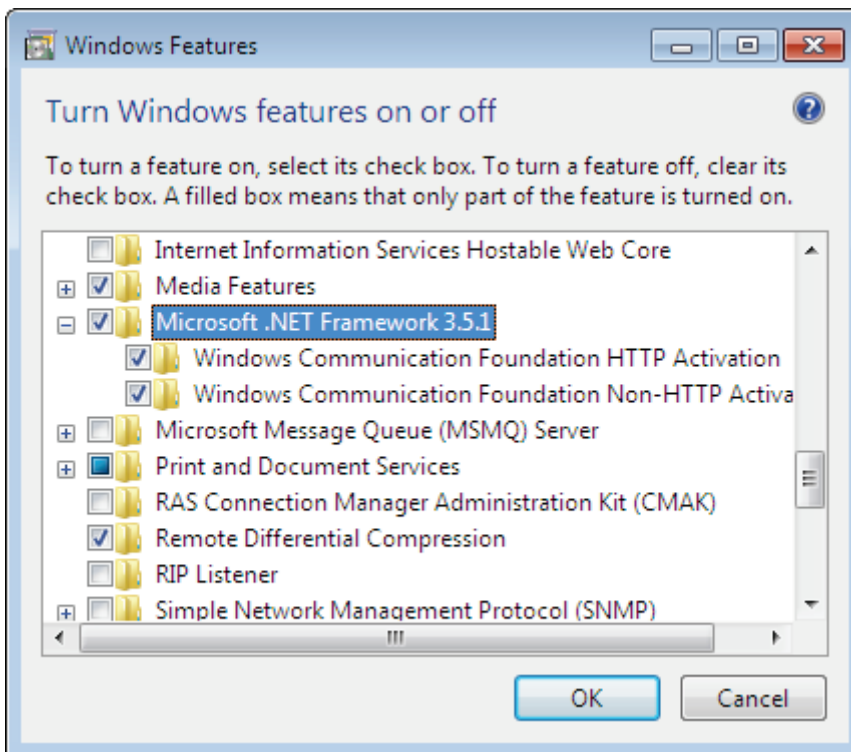


Figure 13

UAC & Firewall

1. To close the UAC, please choose **Start > Control Panel > All Control Panel Items > User Accounts > Change User Account Control settings** to open the setup window, as shown in the below, and then drag the slide bar to **Never notify**.

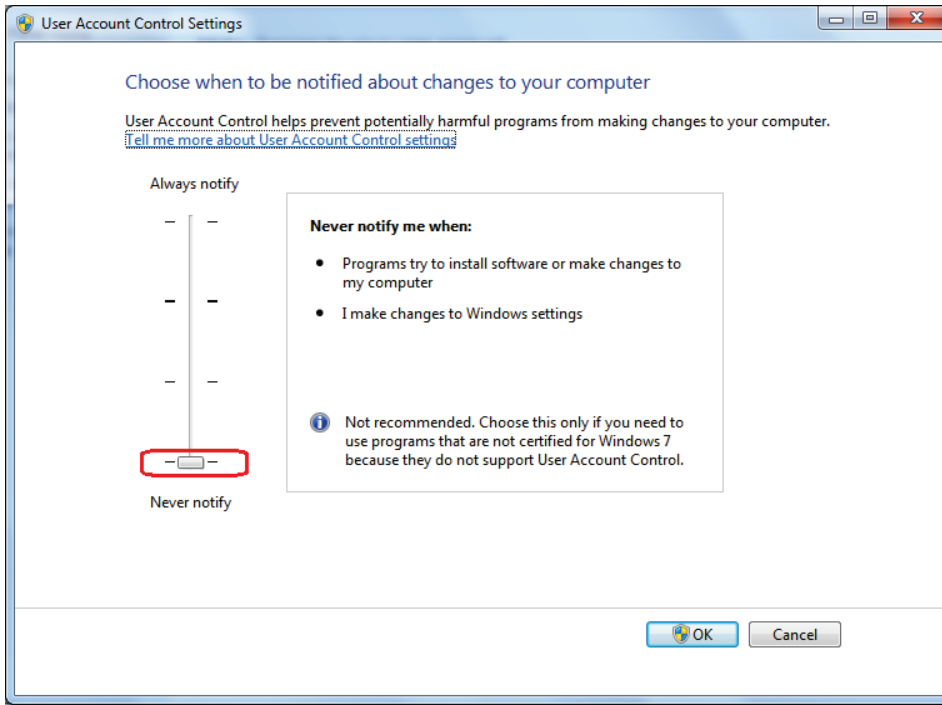


Figure 14

2. To turn off the firewall, please choose **Start > Control Panel > All Control Panel Items > Windows Firewall > Customize Settings** to open the setup window, as shown in the below, and then choose **Turn off...**

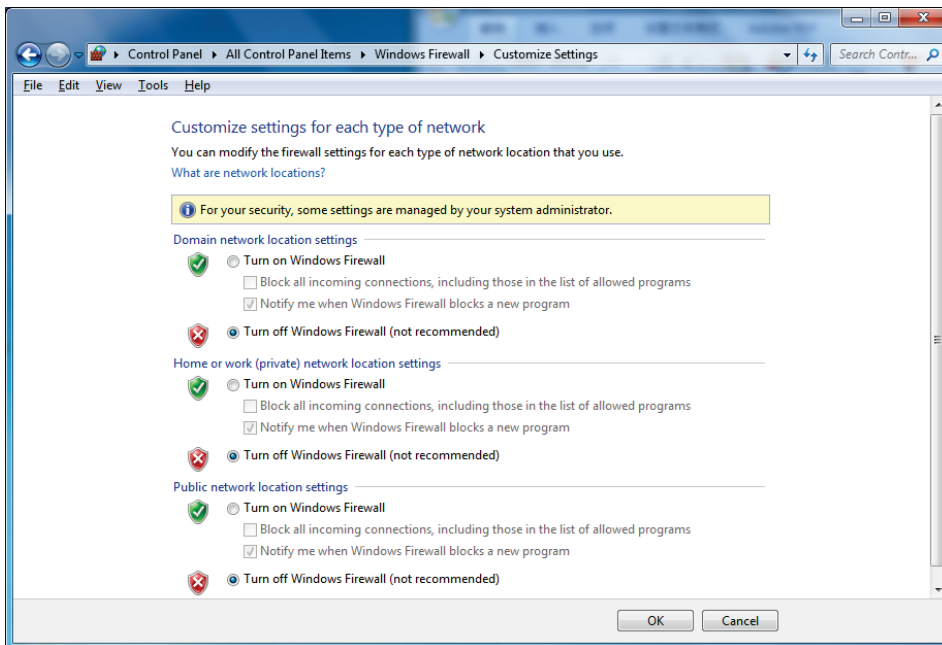


Figure 15

5. Windows XP

Windows XP can be used to install and run the Client. If you want to use remote 3D preview, please separately install .NET Framework. The install program is available under the install directory \Server\Tools.

6. SNMP Services

SNMP Services is short for the Windows feature **Simple Network Management Protocol (SNMP) Services**. This features need to be installed only when you want to install white and black digital printing devices such as Bizhub and Océ VP series on your Server.

Take the Windows Server 2008 as example:

1. Open the **Server Manager**, choose **Features > Add Features**, to start **Add Features Wizard**.
2. Find out and check **SNMP Services** and all its sub-options. And then click **Next**.

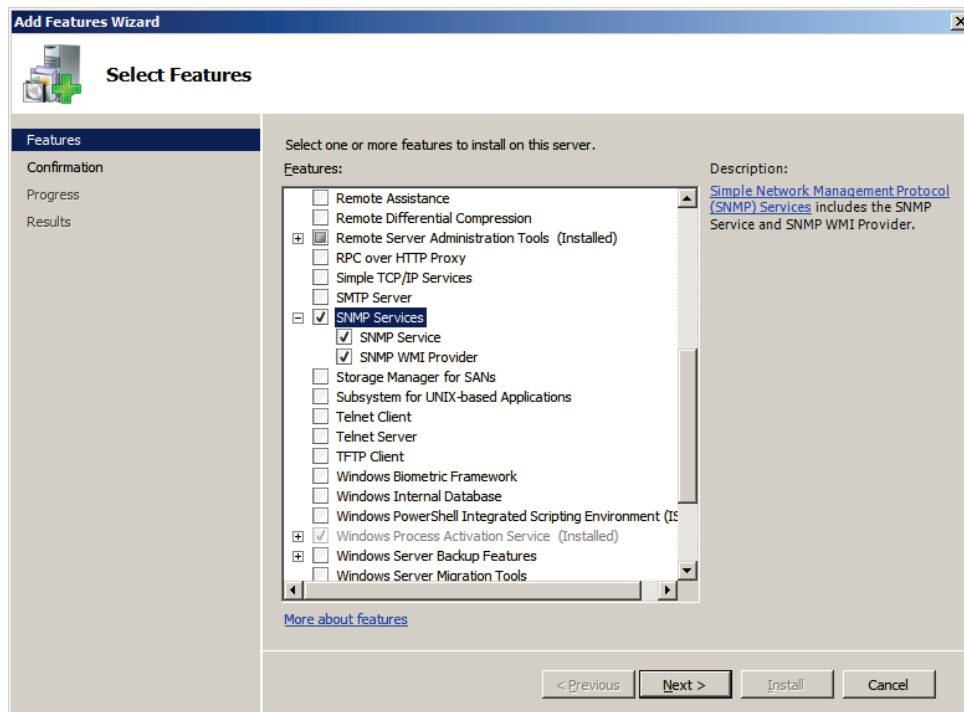


Figure 16

3. In the follow-up window, click **Install** and then wait till it finishes the installation.

7. Configure Display Properties

To display the user interfaces both of the Server and the Client properly, you need to ensure the least configuration as follows (On Windows XP as an example).

1. Double-click **Display** in the **Control Panel**, or right-click on your desktop and choose **Properties**, to open the **Display Properties** dialog. Check the **Settings** tab.

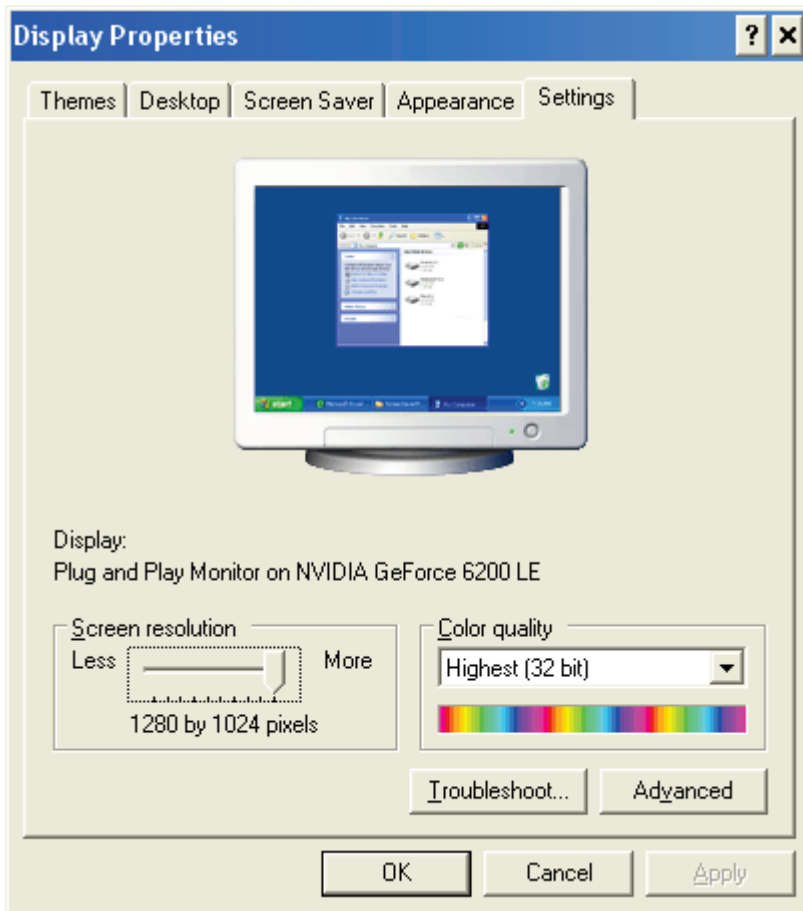


Figure 17

2. Adjust **Screen resolution** to **1024 by 768 pixels**, and **Color quality** to **32 bit**. And then click the **Advanced** button.
3. Check the **Monitor** tab. Set **Screen refresh rate** to **75 Hertz** or higher and click **OK**.
4. Return to the above dialog, click **OK**.

Chapter 2 Install Required Applications

2.1 Microsoft SQL Server 2005 Express

The Microsoft SQL Server 2005 Express edition is required for ElecRoc Server. A manual and separate installation is recommended before the Server installation, though the Server install program can detect whether or not your OS has installed this application, and guides you to install it if it finds no SQL is available.

The install program is provided under the install directory \Server\Tools.

The detailed installation steps are omitted here, but note that, during the installation, you need to cross out **Hide advanced configuration options**.

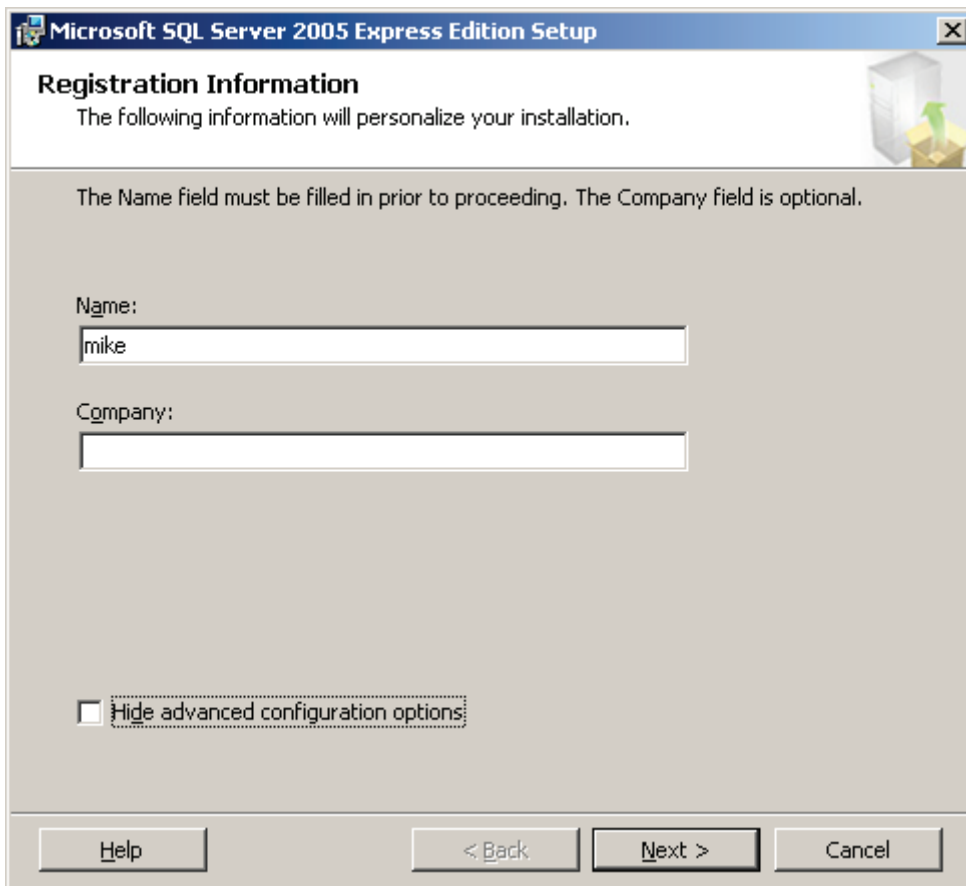


Figure 18

And in the **Instance Name** window, check **Default instance** instead of **Named instance**.

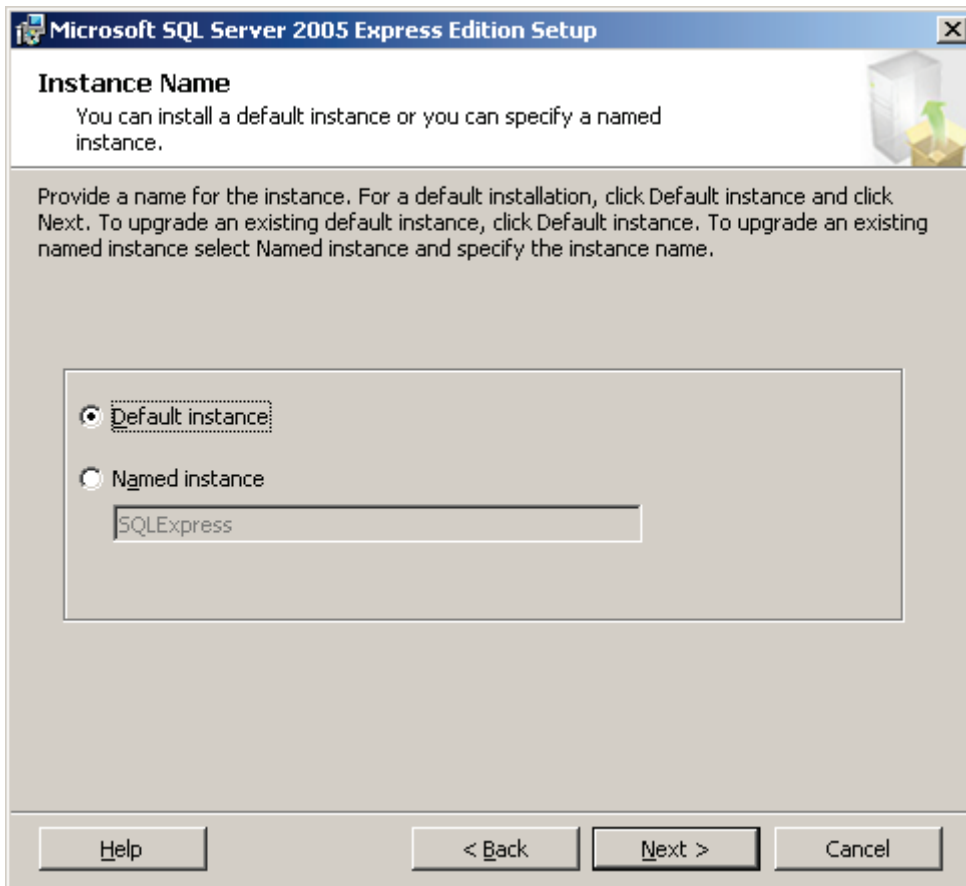


Figure 19

2.2 Adobe Acrobat

Before you install ElecRoc, you need to install Adobe Acrobat at least version 7.0 on both the server and client. It is required as you use processors like Trap, Composer, ganging, the modules like preflight navigator, PDF compare and zone trap. Ganging requires at least version 8. Zone trap, preflight navigator and PDF compare require 9 or higher version.

For details on the installation, refer to related instructions provided by Adobe.

2.3 Enfocus PitStop

ElecRoc supports Enfocus preflight. To correctly check PDF files by using this preflight, you need to install the Enfocus PitStop Server on ElecRoc server.

Please note that non-Server versions, such as 7.0 and 7.5 designed for personal users, are not supported in ElecRoc. The Enfocus PitStop Server can be obtained from Enfocus. And you need to install the Enfocus PitStop Server before you install ElecRoc Server.

PitStop Server lower than v4.0 (not including v4.0):

- 1) Install PitStop Server and register;
- 2) Search the file **EnfocusPitStopLibraryAA.dll** in PitStop Server's program folders, and then copy it into ElecRoc's directory **PreflightJTP\bin\Preflight**;
- 3) Double-click the file **register_PitStopPreFly.bat** under ElecRoc's directory

PreflightJTP\bin\Preflight\;

- 4) Restart the 3rd Party Preflight processor on ElecRoc Server.

PitStop Server v4.0~4.08 (not including v4.08):

- 1) Install PitStop Server and register;
- 2) Double-click the file **register_PitStopPreFly4.0.bat** under ElecRoc's directory **PreflightJTP\bin\Preflight\;**
- 3) Restart the 3rd Party Preflight processor on ElecRoc Server.

PitStop Server v4.08 and above:

- 1) Install PitStop Server and register;
- 2) Search the files **ipworks6.dll**, **MutatorLibraryAB.dll**, **PitStopLibraryAB.dll**, and **xerces-c_2_8.dll** in PitStop Server's program folders, and then copy them into ElecRoc's directory **PreflightJTP\bin\Preflight\;**
- 3) Double-click the file **register_PitStopPreFly4.0.bat** under ElecRoc's directory **PreflightJTP\bin\Preflight\;**
- 4) Restart the 3rd Party Preflight processor on ElecRoc Server.

Chapter 3 Install Founder ElecRoc

Founder ElecRoc is a distributed digital workflow management system. The Server, the Client, and most of the processors can reside independently on various LAN computers, not limited to a same machine.

To be specific, the Server is installed along with the Imposer and ganging, requiring high performance computing capabilities, such as dual core processor. The Client can be installed on PC or Macintosh machines connected to the server, binding TPL Editor and Composer together. Other processors, including Preflight, Trap, and output processors such as Rasterizer and pre/post-RIP Proof, can be separately installed and run on different computers, on either the server, or client, or even other connected computers. Note that some of the output processors such as Printer, Proof, Rasterizer and etc., also require a lot of computing resources. In addition, we do not recommend you to install ElecRoc into a computer that has already deployed Founder EagleRIP.

3.1 ElecRoc Server

The installation steps on various Windows versions are the same on the whole. Please perform as follows to install ElecRoc Server and/or processors (take Windows Server 2008 as example):

1. Insert the ElecRoc install DVD into the DVD-ROM drive. Run the file **Autorun.exe** in the DVD root directory to start the installation. The following window appears.

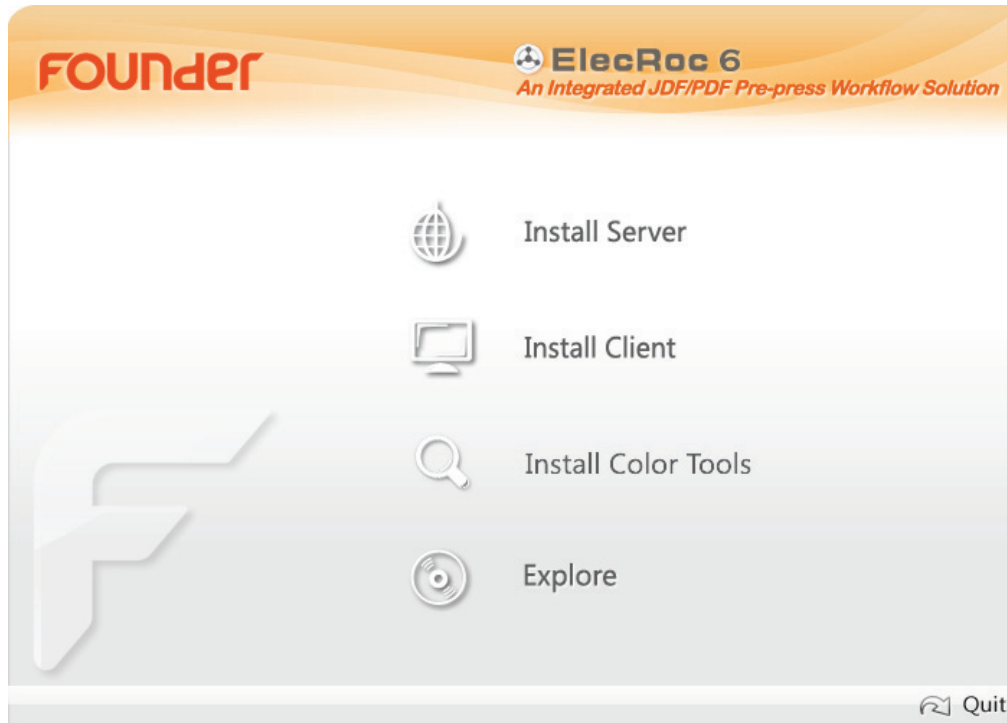


Figure 20

2. Choose **Install Server**. It first checks up your system to see if it is suitable for installing ElecRoc Server, e.g. if it has installed IIS and .Net Framework, if it has closed the UAC, and etc. If not suitable, it will then return a report window. Please configure as per the report suggests, and then choose **Install Server** to re-start the install program.

For Windows Server 2008/2003 and Windows 7, if possible, it can auto-configure some features, such as IIS, .Net, and UAC (for Server 2003, the UAC is NOT applied, and the .Net will be installed with stand-alone install program). A DOS-style window then pops up, hinting you to wait a moment. After the auto-configuration, please press any key to continue.

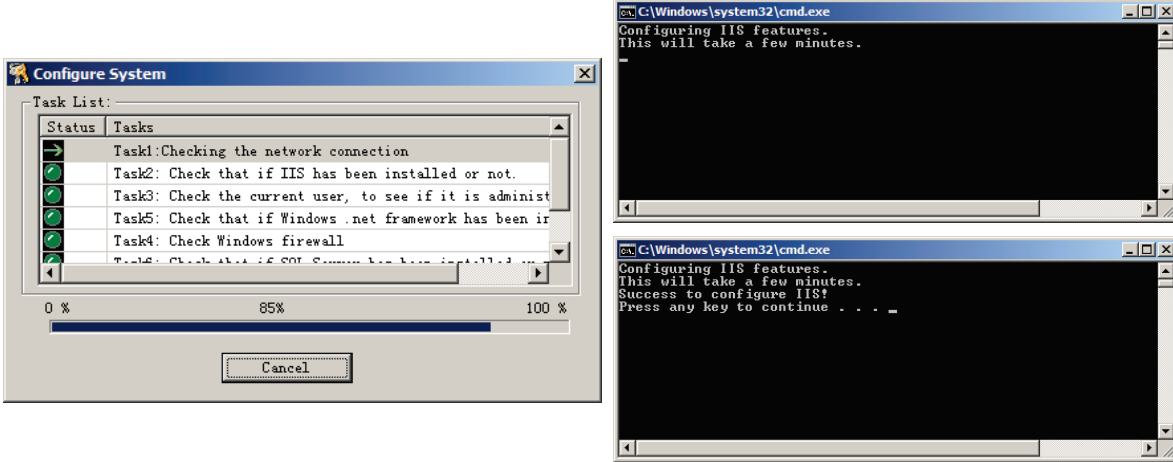


Figure 21

3. The install program starts collecting related information, and after that, displays the welcome window.



Figure 22

4. Click **Next**. The install program shows the end-user license agreement.

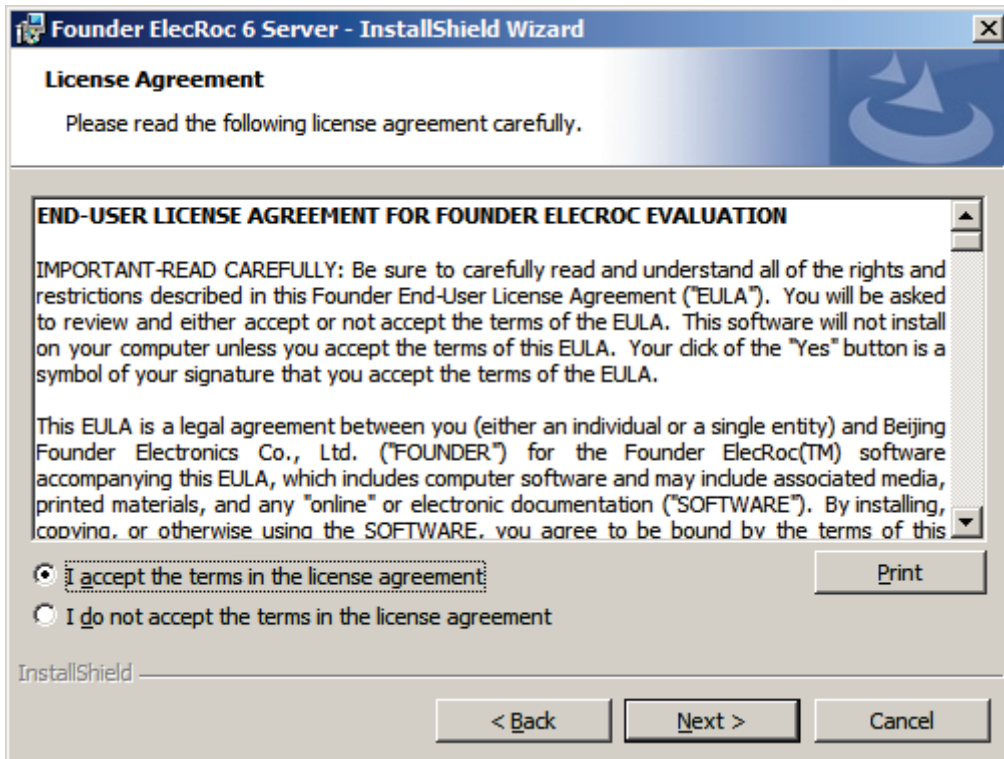


Figure 23

5. Read and accept the agreement, and then click **Next**. It then asks you to choose the license type. ElecRoc supports both hardware and software licenses. Choose the one you are actually using (the later steps [8](#), [13](#), and [14](#) are all related to your choice here).

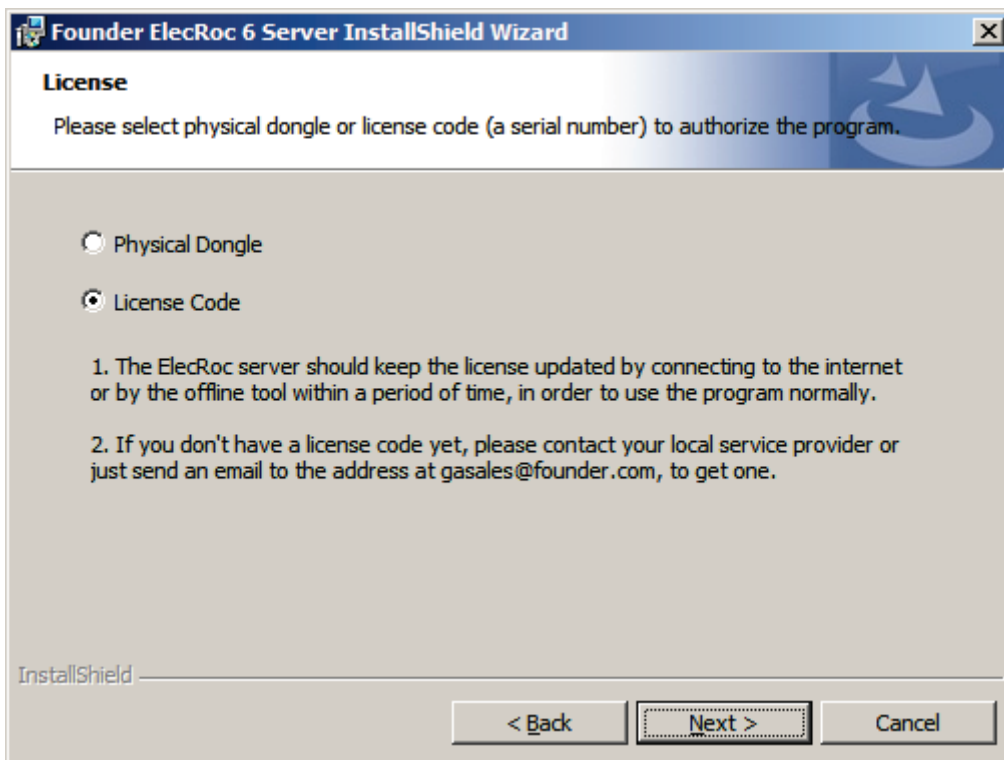


Figure 24

6. The install program prompts you to specify the destination. Note that the Server cannot be installed in the operating system partition.

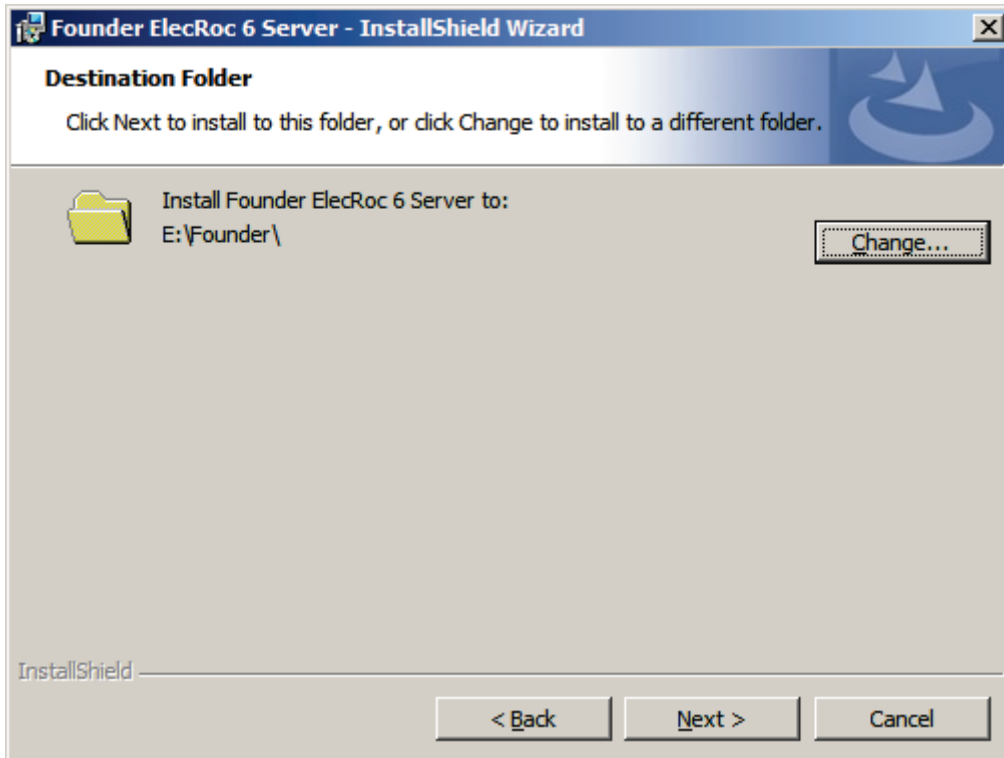


Figure 25

7. Click **Next**. The **Server Type** dialog appears.

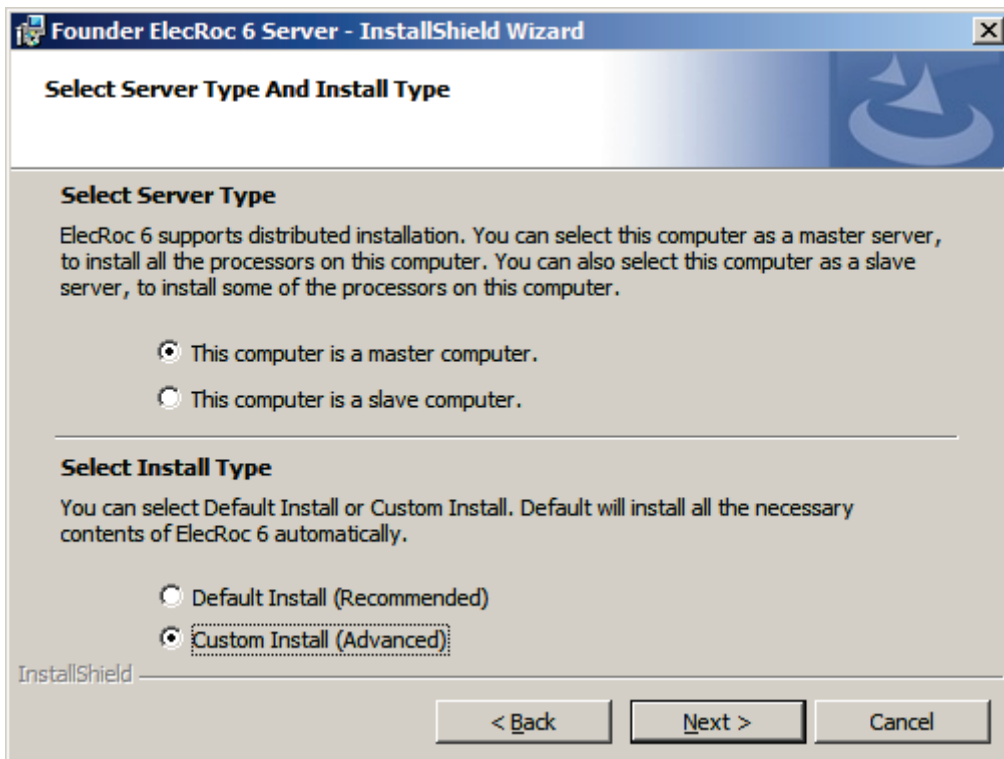


Figure 26

Master computer: To install the Server and the processors on current computer. For the first time to install ElecRoc, you need to choose this to have the Server installed.

Slave computer: To install only part of the processors on current computer. In this case, you must have already installed ElecRoc Server on the master computer. Due to that such processors are installed remotely on a computer other than the master computer, they are also named remote processors.

Note: 1) Generally you are NOT recommended to choose **Slave computer** and install remote processors into a UAC-enabled Server, e.g. Windows Server 2008, because in this case you may need to disable the UAC, or make special configuration (see [section 3.4](#) for details). 2) If you want to install more processors after the Server installation, regardless of **master** or **slave computer**, you do NOT need to run the Server install program over again. Instead, choose **Start > Programs > Founder ElecRoc > Configuration Tools > Processor Configuration**. In this way, you can skip to [step 13](#).

Default Install (Recommended): To install the default program features. Therefore, you do NOT need to specify the detailed features you will install (step 9 below).

Custom Install (Advanced): If checked, you can specify the program features.

8. Click **Next**. If you have chosen **Physical Dongle** in [step 5](#) and **Master computer** in [step 7](#), the install program then prompts you to choose whether or not to install the dongle driver.

Choose **Install dongle driver on this computer** when your dongle is installed in current computer; and choose **Do not install dongle driver on this computer** in case that the dongle is installed in other connected computer.

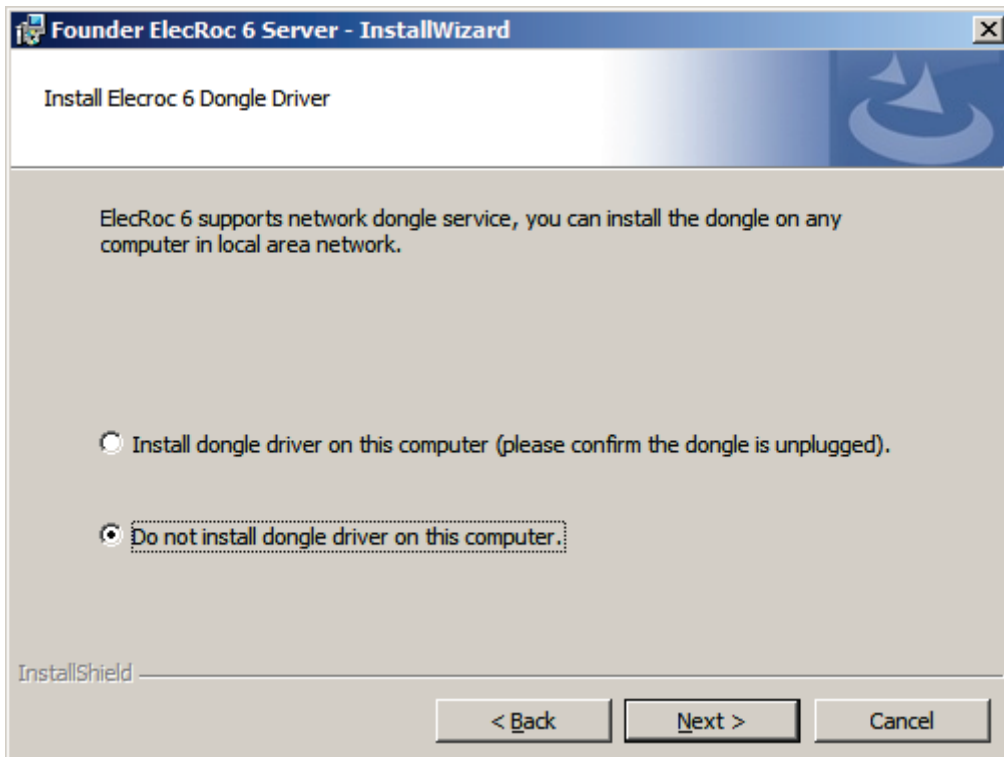


Figure 27

9. Click **Next**. If you have chosen **Custom Install** in [step 7](#), it then pops up the feature

setup dialog for you to specify the features to be installed. The **Space** button enables you to check the disk space required for your selected features.

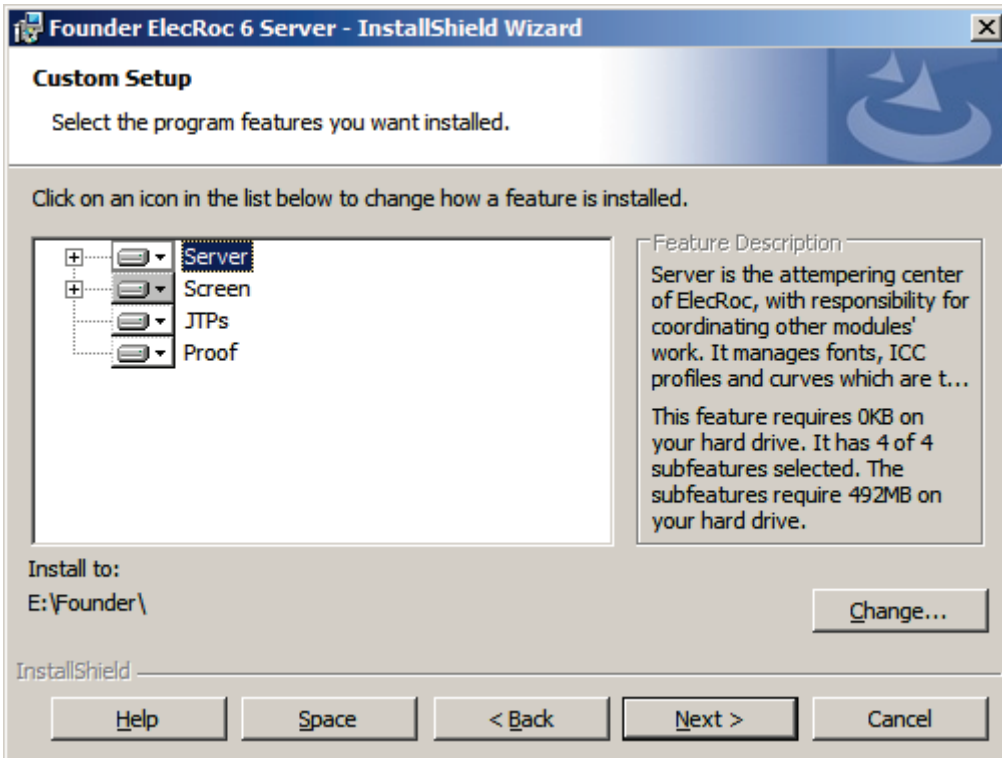


Figure 28

10. The program prompts that it's ready to begin the installation. Click **Install**.

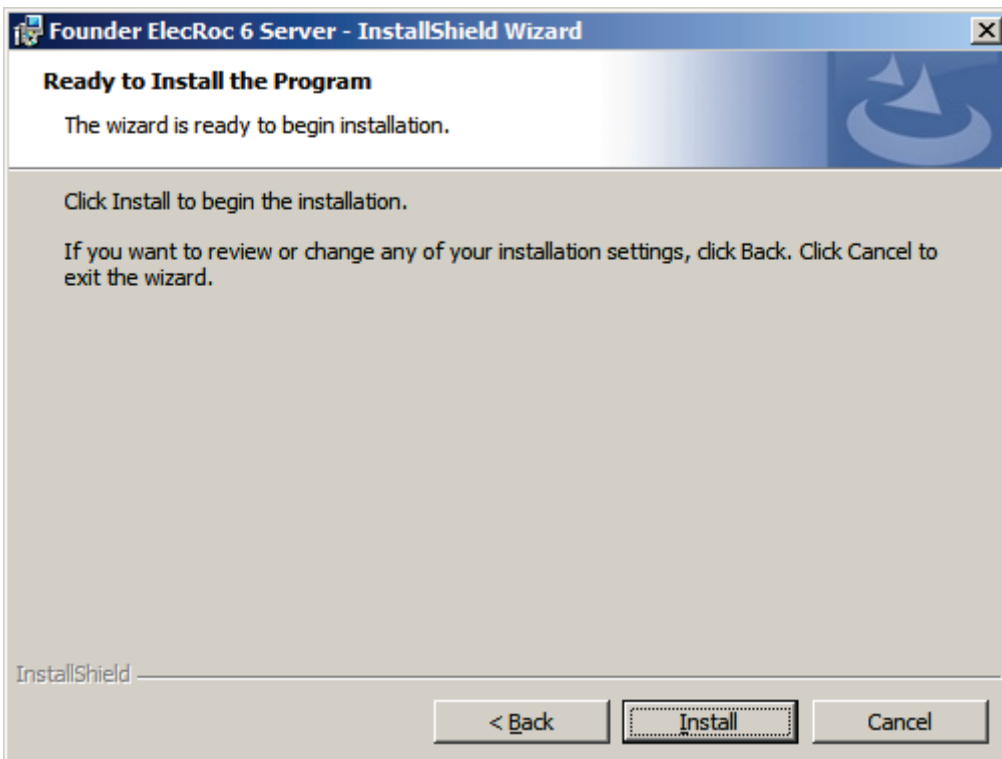


Figure 29

11. It starts to copy files, with a bar showing the progress. This may take a little time, please wait a moment. If you have NOT installed SQL Server, it will guide you to install it.

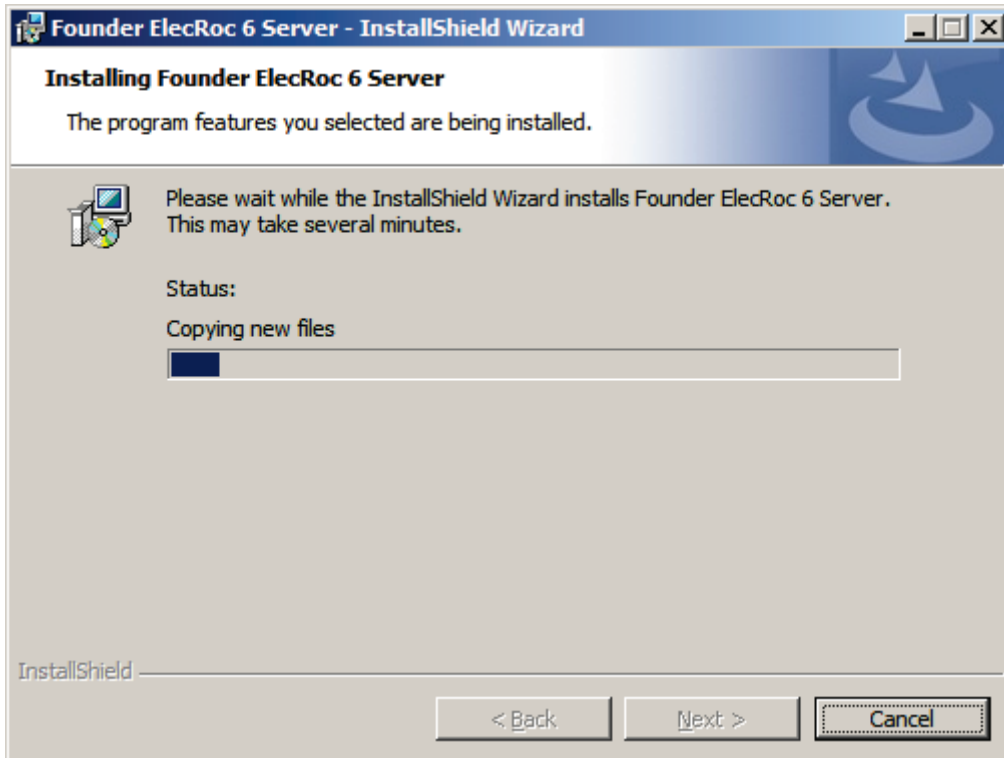


Figure 30

12. When finished, it prompts that the installation is successful. Click **Finish**.

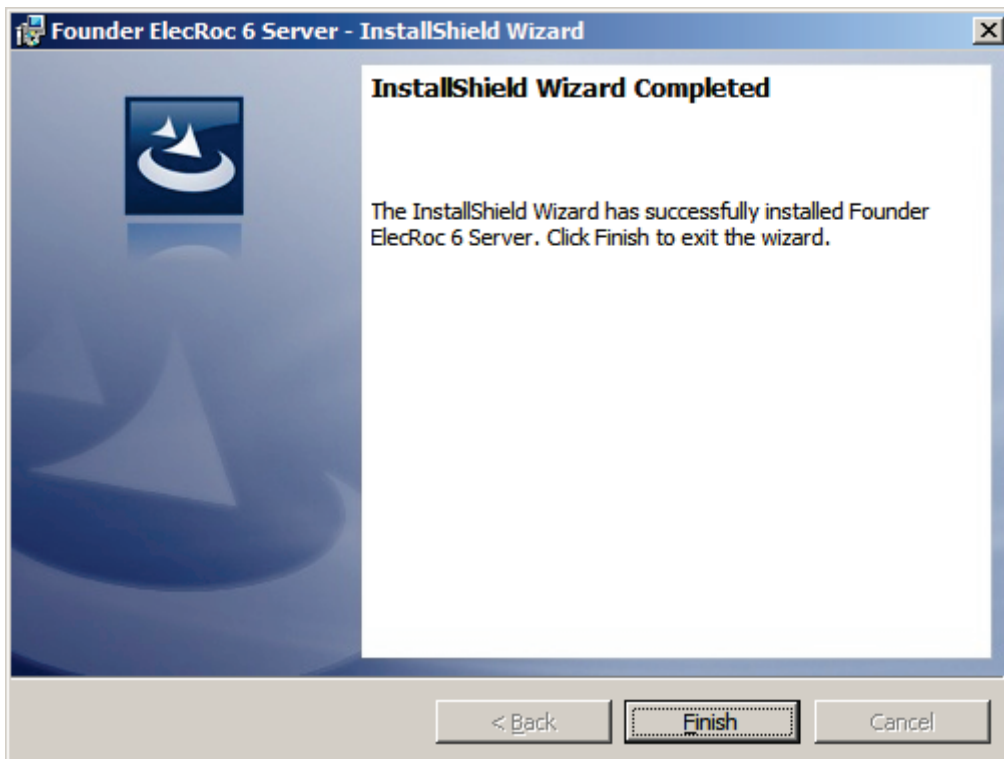


Figure 31

13. Next, if you have chosen **Physical Dongle** in [step 5](#), or if you have chosen **slave computer** in [step 7](#) (this case whether you previously chose physical dongle or license code), you will see the dialog below.

Name/IP for the Server: Always the computer name or IP address of the master computer where your ElecRoc Server is installed or is to be installed.

Name/IP for the dongle: Same as that for the Server when your dongle is installed on the server, or when you have chosen license code but slave computer in previous steps; and if the dongle is installed on a computer other than the server, please input the actual name or IP of that computer.

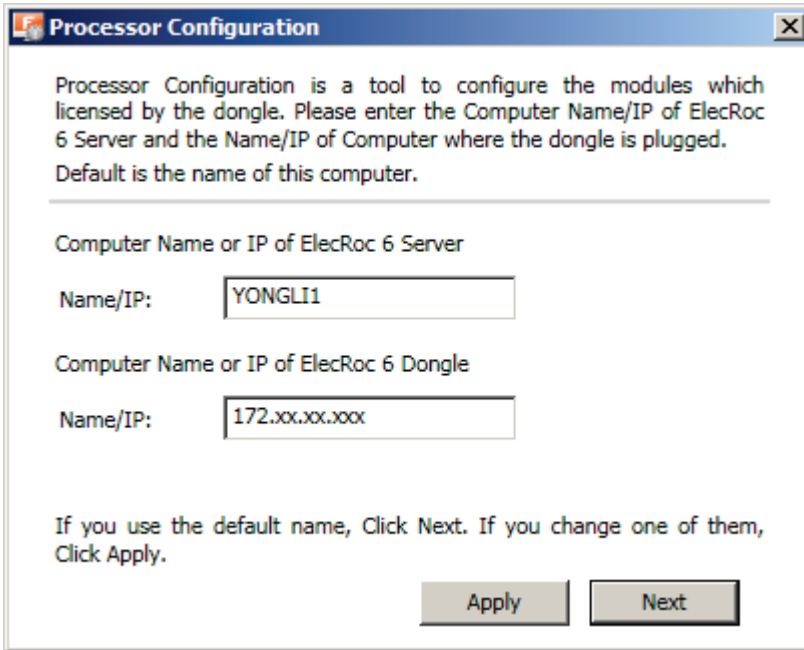


Figure 32

14. If you have chosen **License Code** in [step 5](#) and **master computer** in [step 7](#), instead of the dialog above, you will see the dialog below.

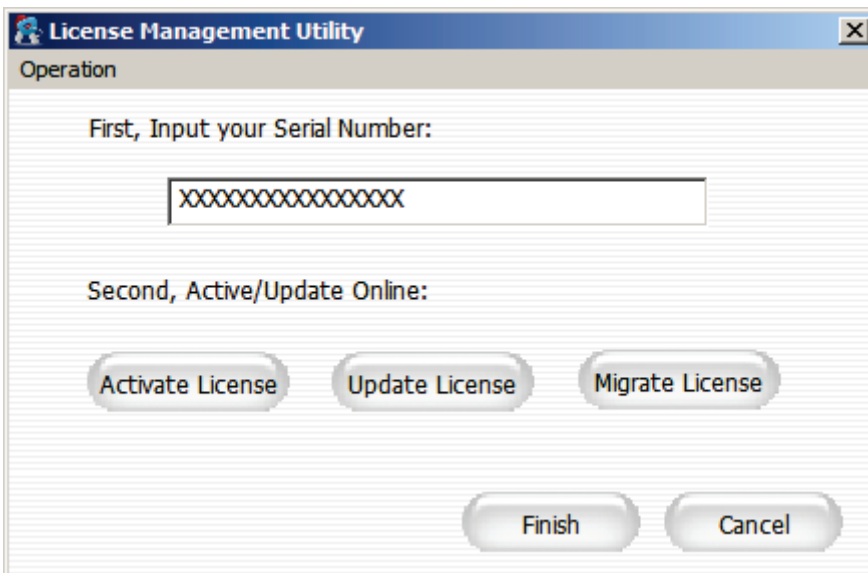


Figure 33

Input your serial number (please contact your sales representative for that), and then click **Activate License**. In the pop-up window, see the figure below, choose **Online**, and then click **Activate**. If the serial number is correct, it returns a success prompt. (Offline activation is also supported, please follow the instruction on the window to perform.)

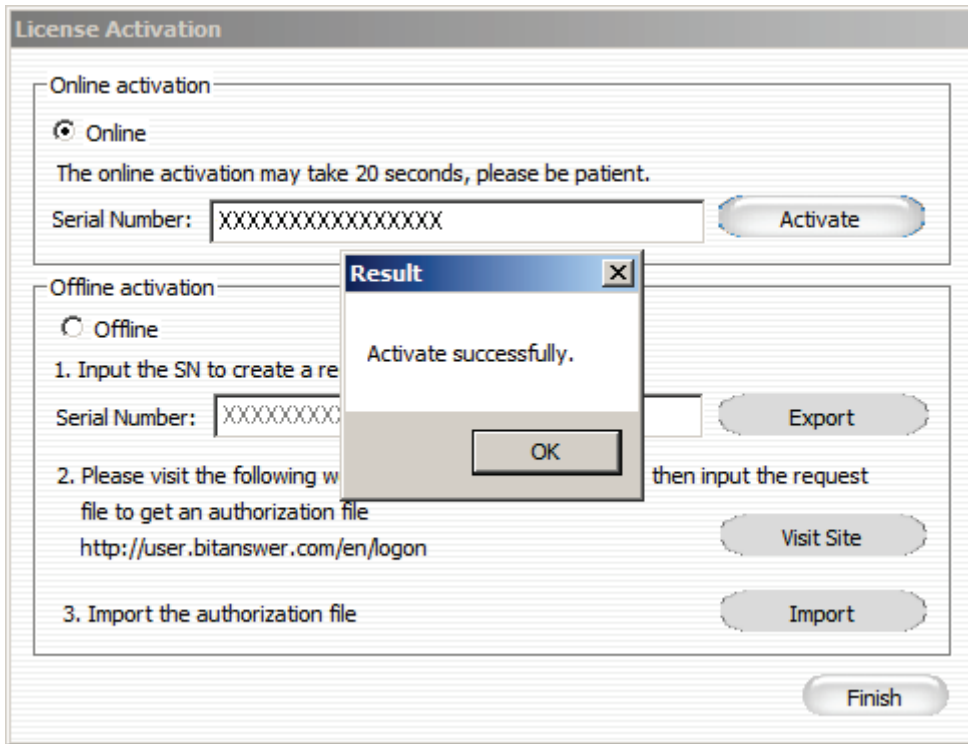


Figure 34

Note: If the server is located in the local area network (LAN), please return to the previous window, choose the menu item **Operation > Configuration**, to enable the proxy server: check the option **Enable Proxy Server**, and then input the address, port, user and password according to your actual network environments.

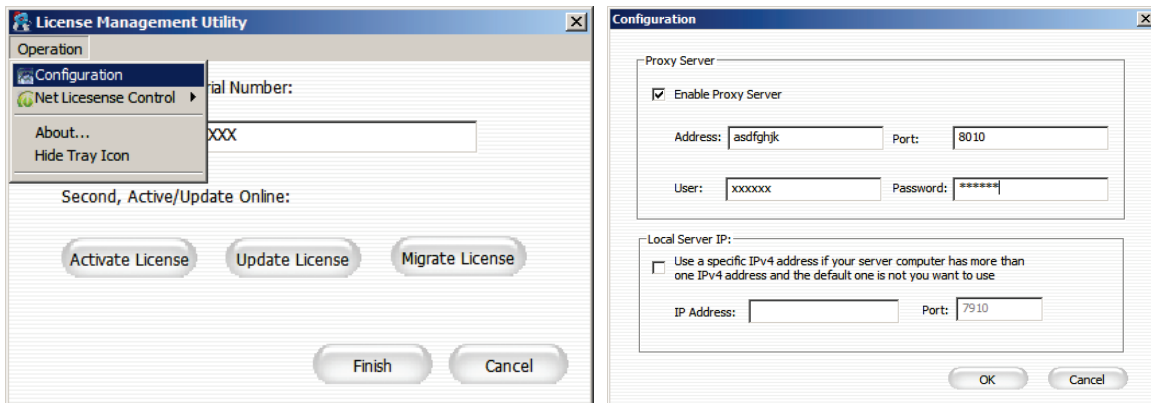


Figure 35

15. The program then displays the processor list. It reads the license information from the dongle or license code, and then lists the licensed processors. Check the processors you want to install and then click **Next**.

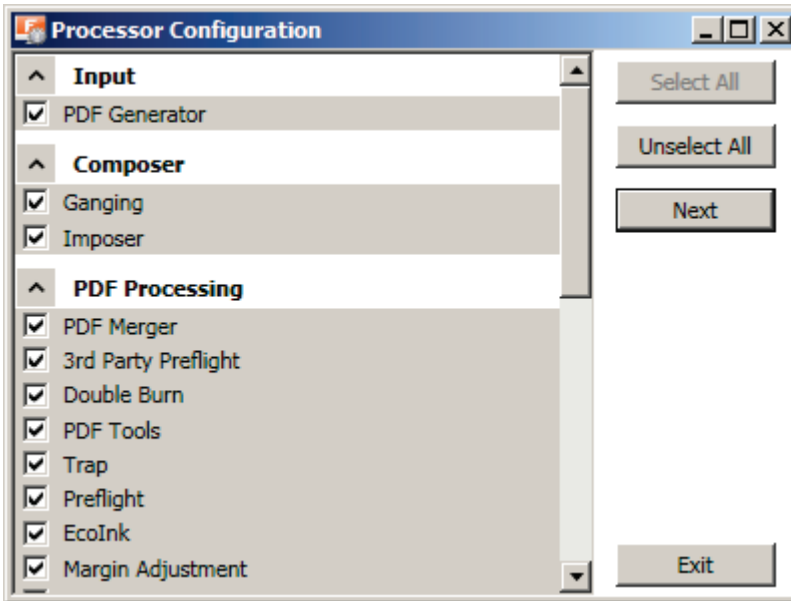


Figure 36

16. The install program displays the setup dialogs for the processors, one by one. In these dialogs, you can customize each processor's name and/or related properties. The following figure shows the setup dialog for the PDF Rasterizer processor. That for most other processors is basically the same.

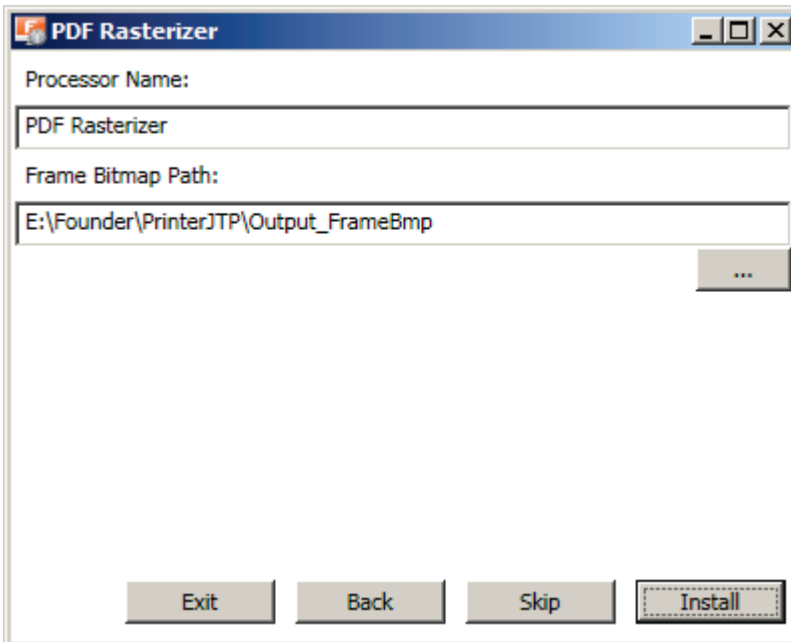


Figure 37

17. The setup dialog for the print and proof is a little different. You need to specify not only the processor name, but also the printer and the printer driver. Take that for the proof processor as example:

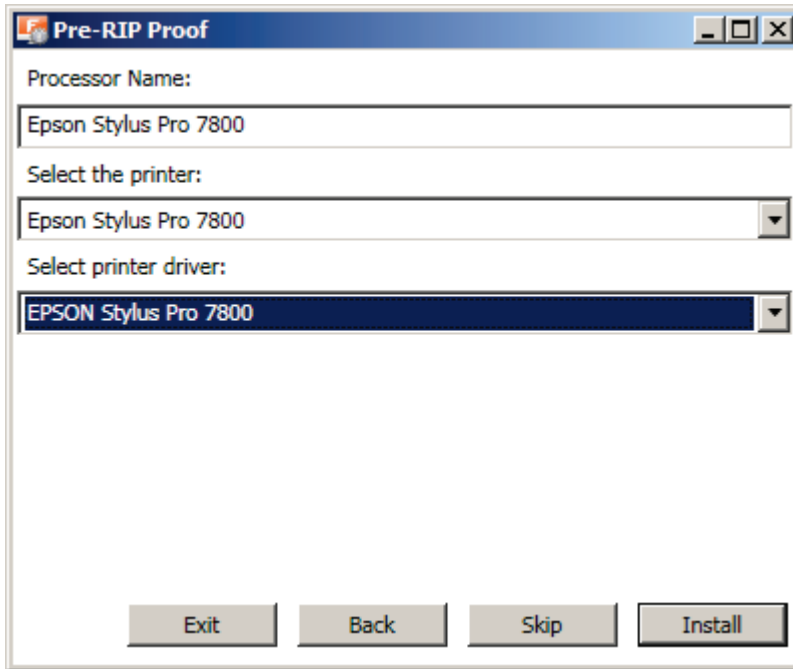


Figure 38

18. After setups, it prompts that the installation is completed. Click the prompt to exit.

Notes about the un-installation:

The un-installation can be performed as follows:

1. Before the un-installation, please use ElecRoc’s backup tools (Client menu **Tools > Backup Manager** or navigator **Administrator > Archive Management**, and the separate database backup tool provided in the install DVD) to backup your useful resources such as jobs, templates, database, and various kinds of profiles.
2. Choose **Start > Control Panel > Programs > Uninstall a program > Founder ElecRoc 6 Server > Uninstall** to start the un-install program.
3. It asks you the confirmation for the un-installation. Click **Yes** to confirm.

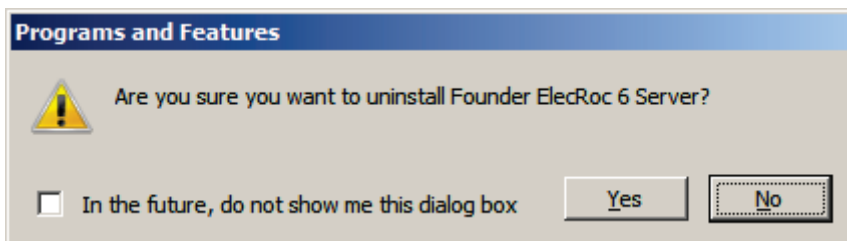


Figure 39

4. It starts to gather related information. After that, it prompts that the un-installation will delete all the jobs, templates and files. Click **Yes** to continue. Or you can click **No** and backup these resources if you haven’t.

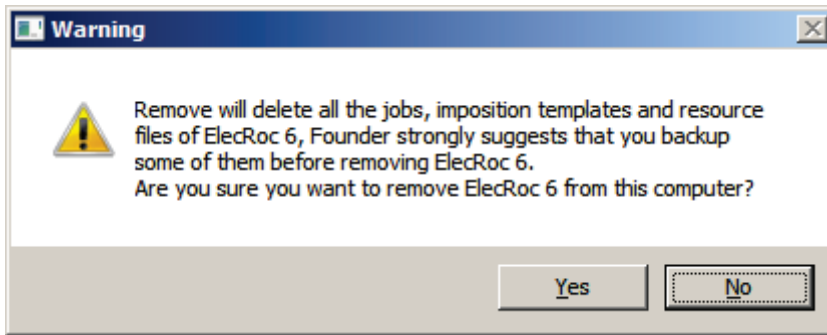


Figure 40

5. It starts to remove ElecRoc, showing the un-install progress and remaining time. Wait till it completes the un-installation.

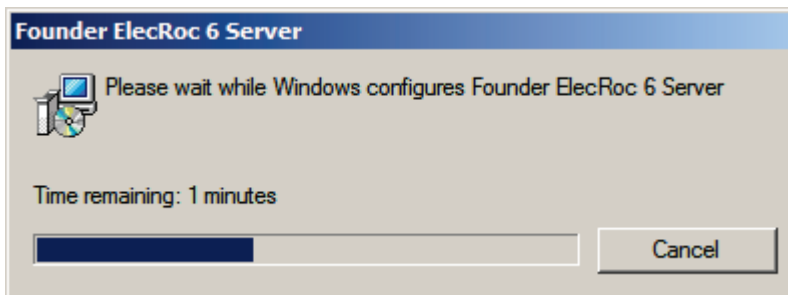


Figure 41

3.2 ElecRoc Client on PC

Perform as follows to install (on Windows Server 2008 as example):

1. Run the install file **Autorun.exe**, and choose **Install Client**. The install program starts collecting related system information, and after this, it displays the welcome window.

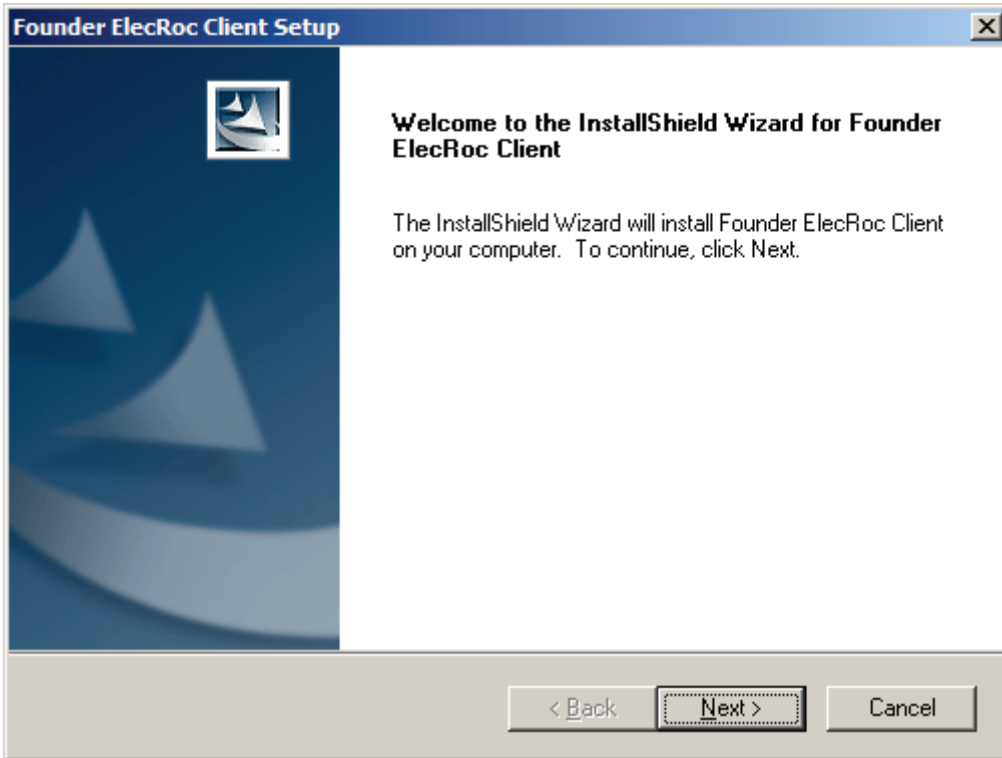


Figure 42

2. Click **Next**. The install program prompts you to specify a destination. You can use the default folder, or specify another with the **Browse** button. And then, click **Next**.

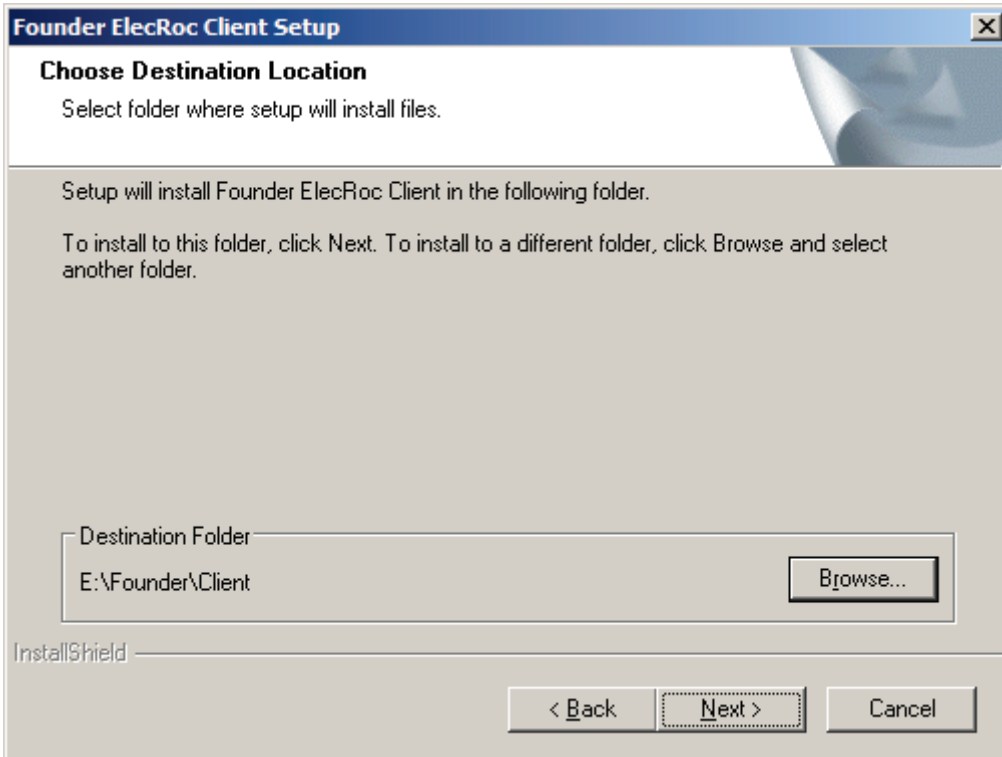


Figure 43

3. Click **Next** to confirm the settings.

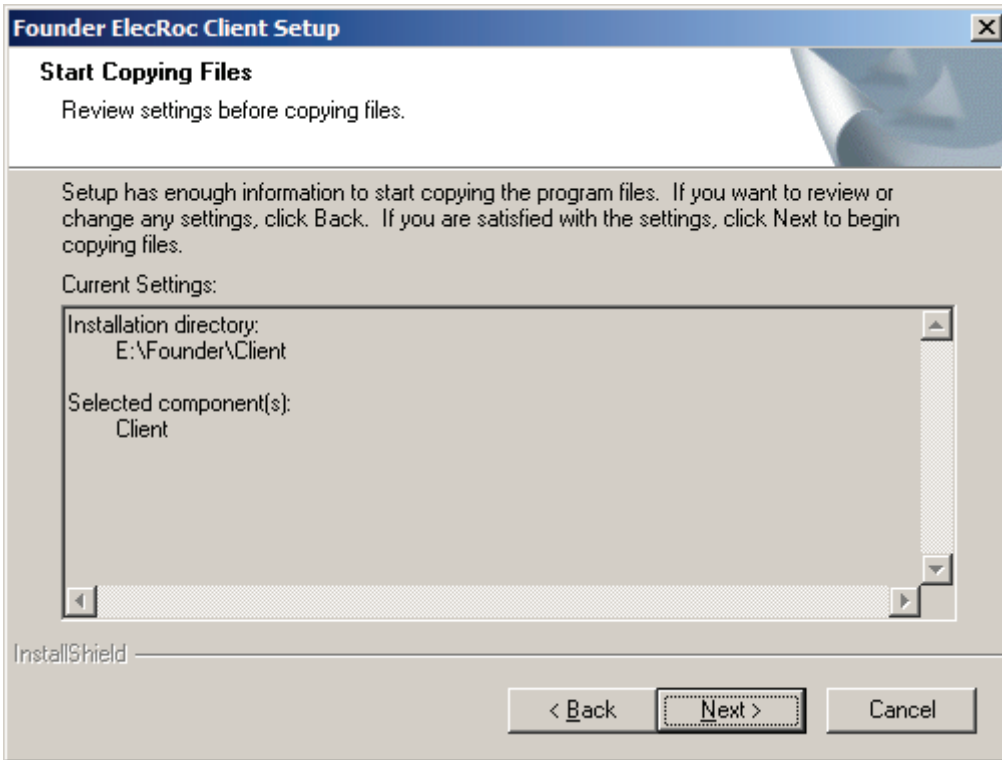


Figure 44

4. The program starts copying files. The bar shows the copying progress.

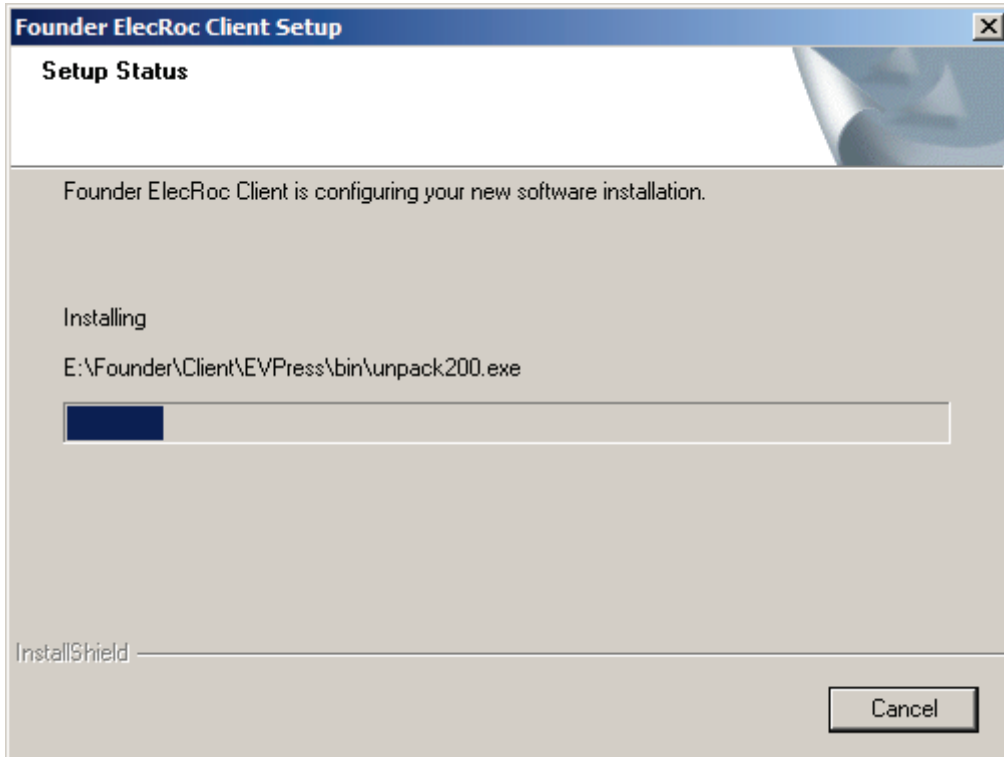


Figure 45

5. When the bar reaches 100%, it shows the complete window. Click **Finish** to complete.

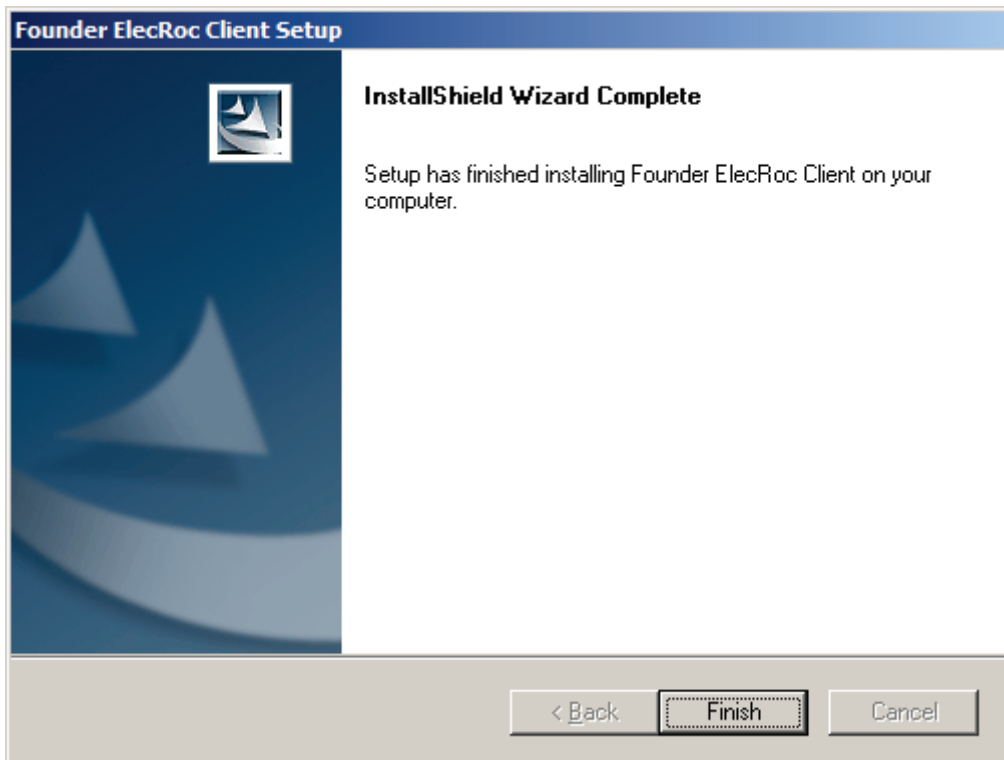


Figure 46

3.3 ElecRoc Client on Mac

1. Insert the ElecRoc Install DVD into the DVD-ROM. Find out **ElecRoc6.0.pkg** in the install directory \Client\MAC\.

Note: *If you access the install file **ElecRoc6.0.pkg** through a network sharing instead of an install DVD, we recommend you to copy this file to your local computer before you run it to start the installation.*

2. Double-click to run the install program. The program first displays the welcome window.

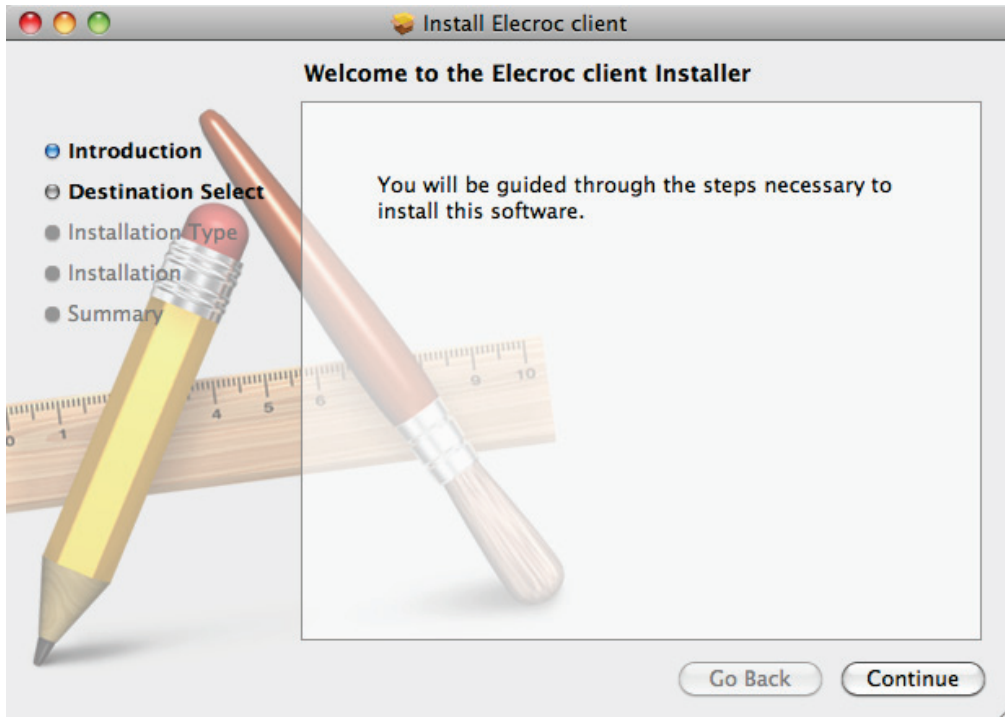


Figure 47

3. Click **Continue**. The **Destination Select** dialog appears. Select the destination folder and click **Continue**.

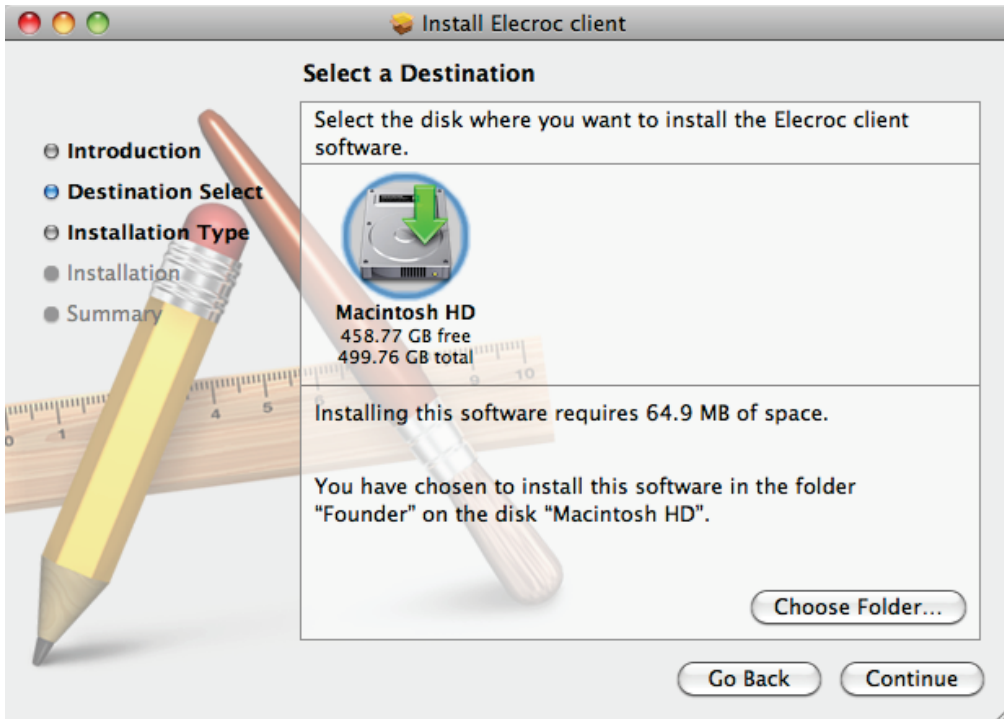


Figure 48

4. The **Installation Type** dialog will be displayed. Click **Install** to begin the installation.

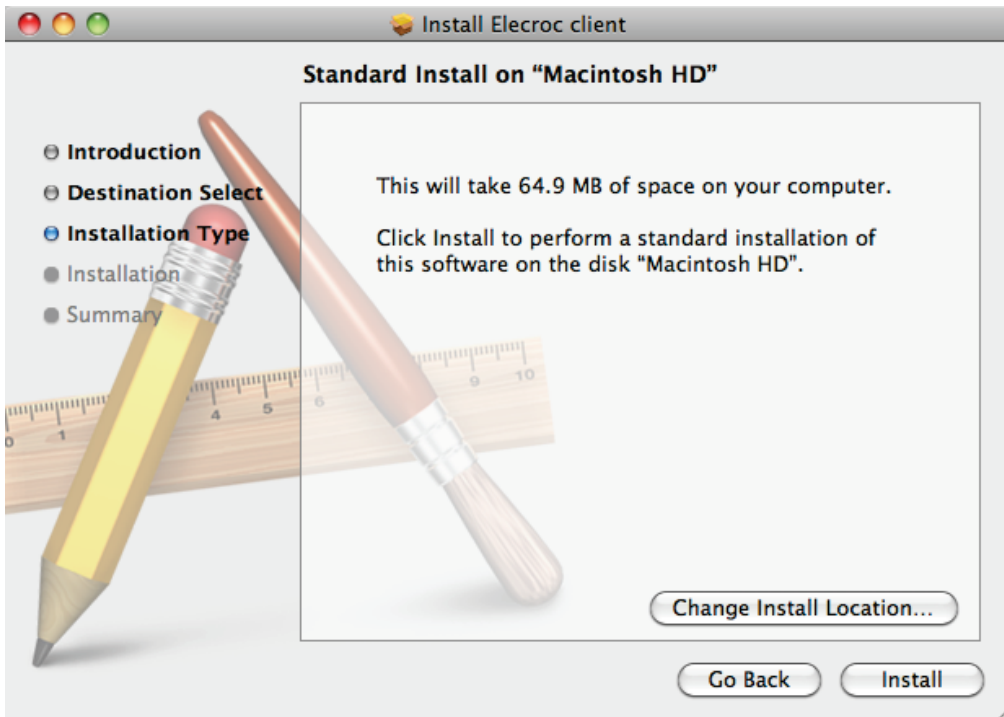


Figure 49

5. A dialog box may appear and ask you to provide an operating system administrative user and password (if any).

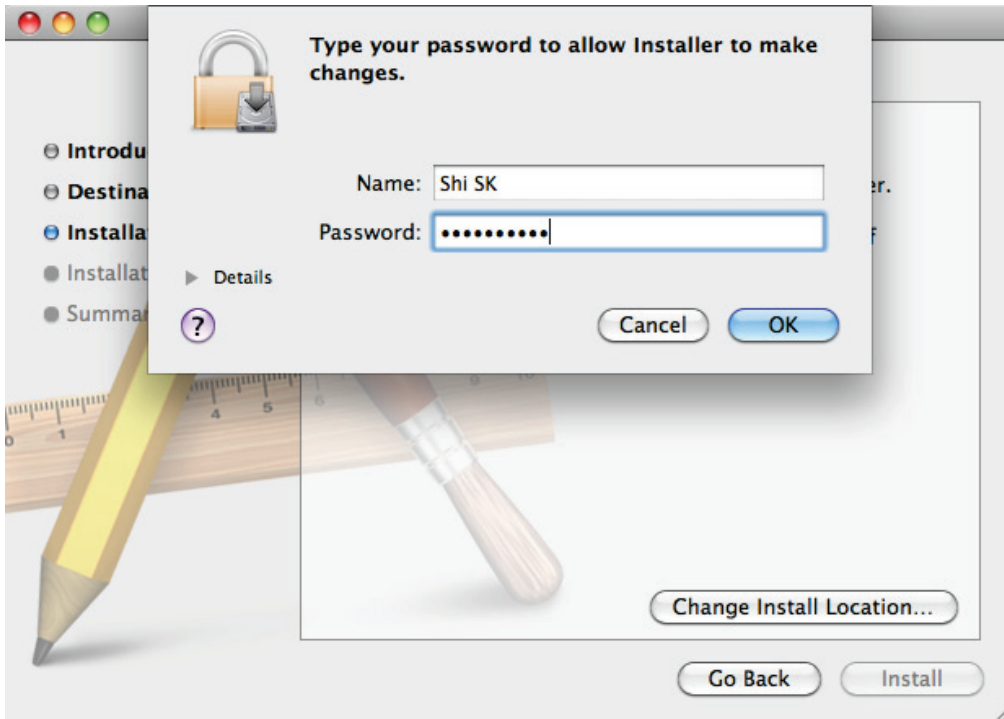


Figure 50

6. The **Installation** window appears, showing the install progress with a bar.

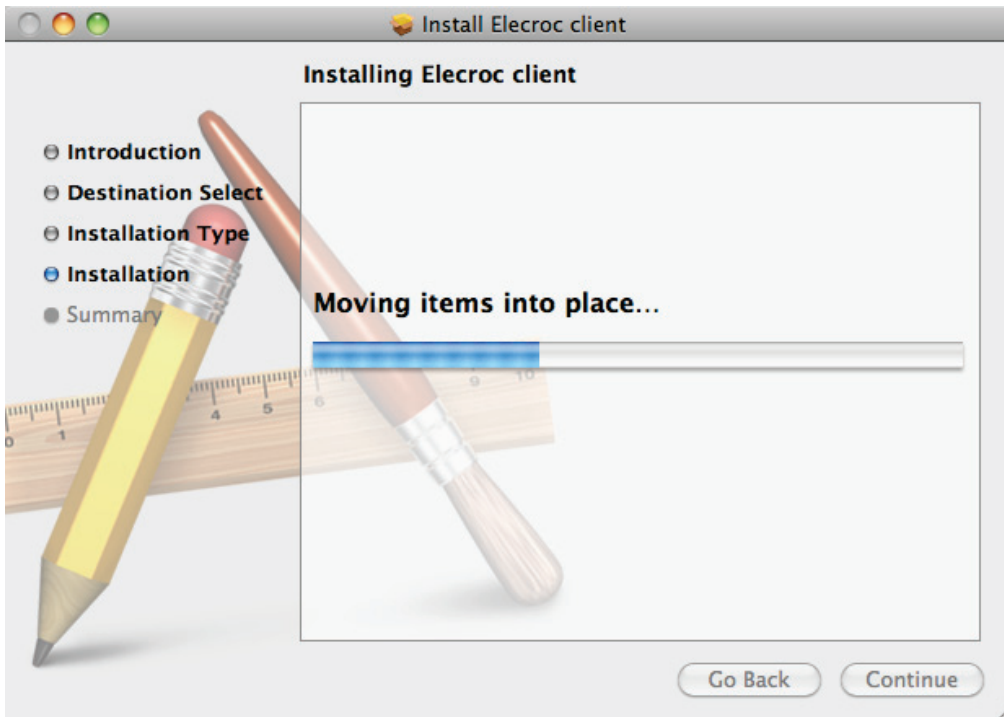


Figure 51

7. When the progress bar reaches 100%, the following dialog shows that the installation was successful. Click **Close** to complete.

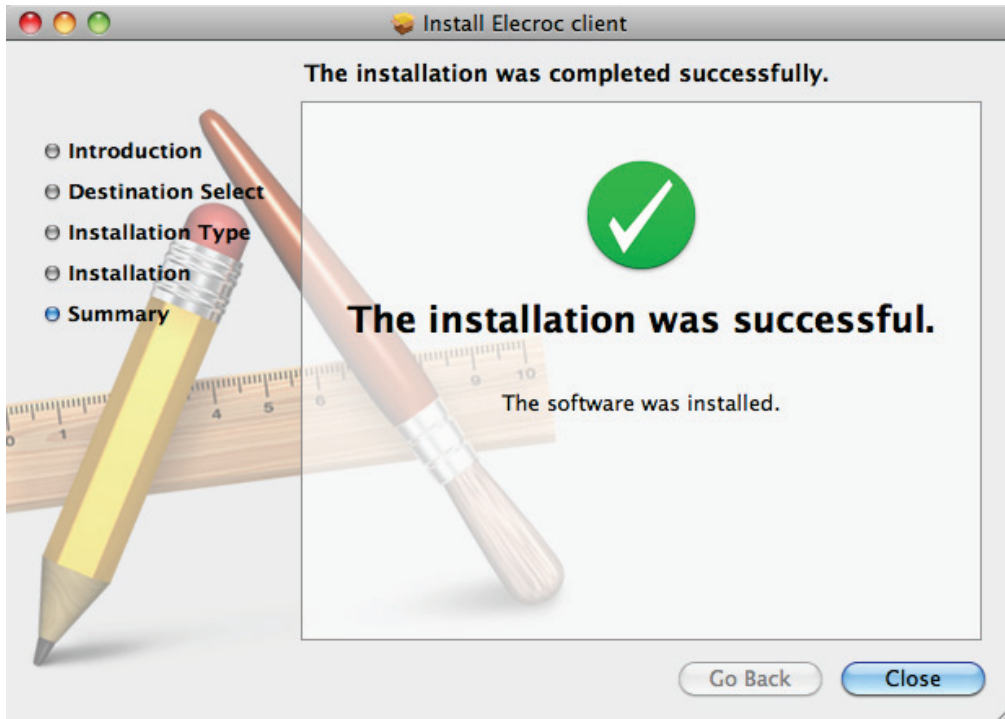


Figure 52

3.4 Remote Processors

We've mentioned the installation of remote processors in [section 3.1](#). This section is a supplement about some restrictions and notices that you should note before the installation.

Remote processor is such processor that is NOT installed locally on the computer where you have installed the ElecRoc Server, but on another computer remotely-connected in your LAN. The computer for installing the remote processor is also called slave server, while that for installing the ElecRoc Server is called master server.

Prior to the installation of the remote processors, you need to note or ensure that:

1. ElecRoc processors, including remote ones, are installed & used by license, please check over the license (on the Server, choose menu **Help > ElecRoc 6 Dongle Information**), ensure that the total number of the processors *installed* and *to be installed* on the master and slave servers is no more than the number licensed.
2. The master and slave servers must be in same domain, and be accessed each other.
3. Turn off Windows Firewall on both the master and slave servers.

If you are using other firewall, please add or allow the following exceptions:

\Elecroc\bin\Coordinator\Coordinator.exe
\CommonTools\bin\RemoteProxy.exe
C:\Program Files\Common Files\Founder\ComHost\COMHostRun.exe
the dongle's Elite4 Net Service
ports (including Port80, Port135, Port8000, and Port8100)

4. Turn off UAC on both the servers in case that the operating system for one or both of the master and slave servers is Windows Server 2008 or Windows 7.
5. Manually make the following configurations (take Windows Server 2008 as example).

On the **master** server:

- 1) Choose **Start > Run**, type **dcomcnfg**; and then click **OK**;

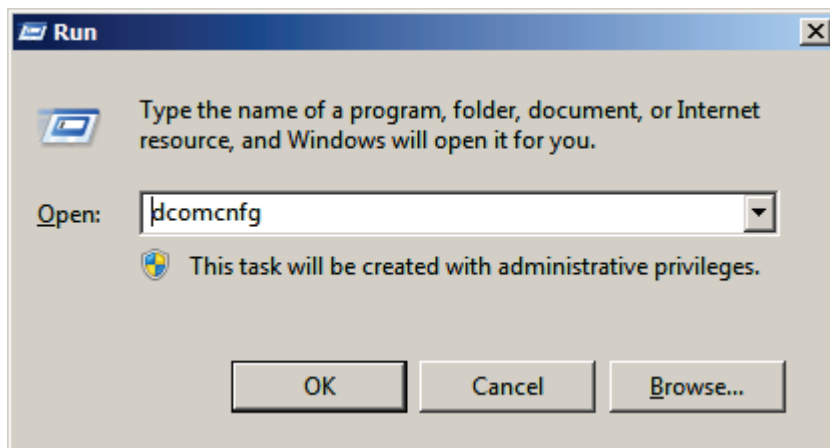


Figure 53

- 2) In the pop-up dialog box, choose **Console Root > Component Services > Computers > My Computer > DCOM Config**;

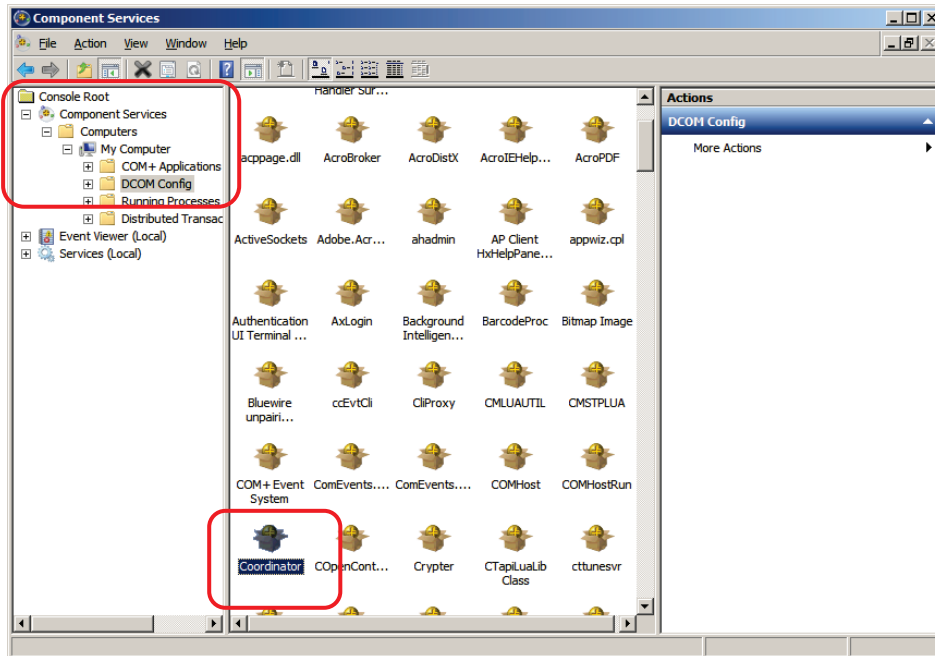


Figure 54

- 3) Find out the file **Coordinator**, right-click and choose **Properties**;
- 4) Under the **Identity** tab, check **The interactive user**.

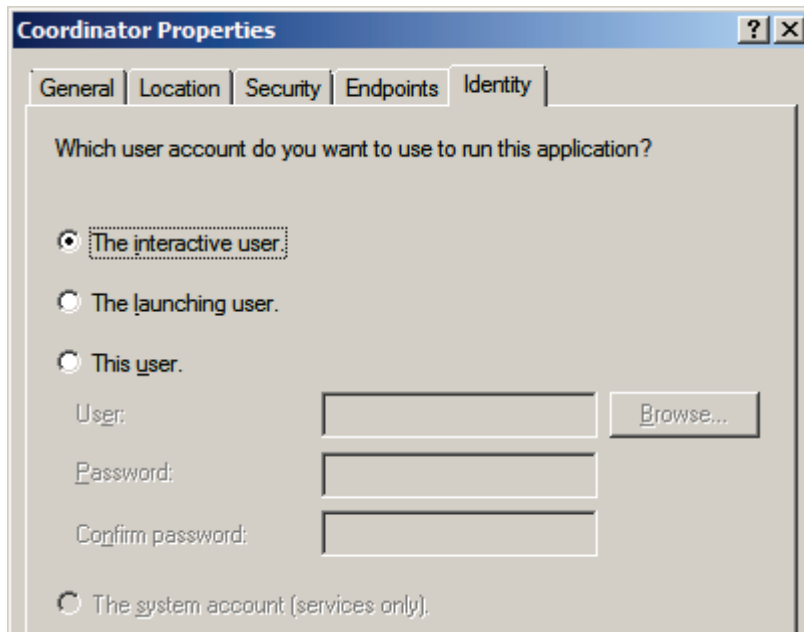


Figure 55

On the **slave** server:

- 5) Choose **Start > Run**, type **dcomcnfg**; and then click **OK**;
- 6) In the pop-up dialog box, choose **Console Root > Component Services > Computers > My Computer > DCOM Config**;
- 7) Find out the file **COMHostRun**, right-click and choose Properties;

8) Under the **Identity** tab, check **This user**, type in the **User** and **Password**, and then click **OK**. The user must be one of the administrators in the server system.

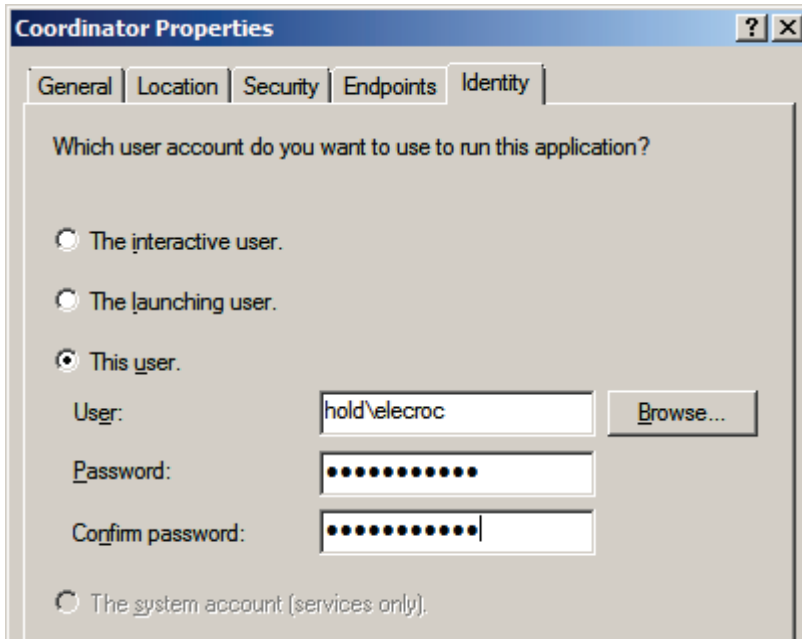


Figure 56

9) Find out the file **RemoteProxy**, do the same as that for the file **COMHostRun**.

The remote processor cannot be installed if UAC on any of the two servers is turned on, unless the login user & password for the two servers are completely the same. You need to configure as follows in case that you have to turn on the UAC.

On the **master** server where UAC is turned on:

- 1) Choose **Start > Run**, type **dcomcnfg**; and then click **OK**;
- 2) In the pop-up dialog box, choose **Console Root > Component Services > Computers > My Computer > DCOM Config**;
- 3) Find out the file **Coordinator**, right-click and choose **Properties**;
- 4) Under the **Identity** tab, check **This user**, type in the **User** and **Password**, and then click **OK**. The user must be one of the administrators in the server system.

On the **slave** server where UAC is turned on:

- 5) Choose **Start > Run**, type **dcomcnfg**; and then click **OK**;
- 6) In the pop-up dialog box, choose **Console Root > Component Services > Computers > My Computer > DCOM Config**;
- 7) Find out the file **COMHostRun**, right-click and choose **Properties**;
- 8) Under the **Identity** tab, check **This user**, type in the **User** and **Password**, and then click **OK**. The user must be one of the administrators in the server system.
- 9) Find out the file **RemoteProxy**, do the same as that for the file **COMHostRun**.

Note: *The users configured for the master and slave servers may be different, but for the sake of easiness, you'd better use a same user.*