

# **Founder ElecRoc™**

*An Integrated JDF/PDF Pre-press Workflow Solution*

**Version 5.11**

# **Installation Guide**

April 2012

Beijing Founder Electronics Co., Ltd.

**FOUNDER**

The software described in this manual is furnished under a license agreement and may be used only in accordance with the terms of the agreement.

## Copyright Notice

Copyright © 2001-2012 Beijing Founder Electronics Co., Ltd. All Rights Reserved.

Any technical documentation that is made available by the Beijing Founder Electronics Co., Ltd. is the copyrighted work of the Beijing Founder Electronics Co., Ltd. and is owned by the Beijing Founder Electronics Co., Ltd.

NO WARRANTY. The technical documentation is being delivered to you AS-IS and the Beijing Founder Electronics Co., Ltd. makes no warranty as to its accuracy or use. Any use of the technical documentation or the information contained therein is at the risk of the user. Documentation may include technical or other inaccuracies or typographical errors. Founder reserves the right to make changes without prior notice. No part of this publication may be copied without the express written permission of the Beijing Founder Electronics Co., Ltd., No.9, The Fifth Street, Shangdi Information Industry Base, Haidian District, Beijing 100085, People's Republic of China.

## Trademarks

Founder and Founder logo are registered trademarks of Founder Group Corporation. ElecRoc is a registered trademark of the Beijing Founder Electronics Co., Ltd.

Microsoft, Windows, Windows Server 2003, Windows Server 2008, Windows XP and Windows 7 are trademarks or registered trademarks of Microsoft Corporation.

Adobe, Adobe Photoshop, Adobe Acrobat and PostScript are registered trademarks of Adobe Systems Incorporated and PostScript 3 is a trademark of Adobe Systems Incorporated.

Pentium is a registered trademark of Intel Corporation.

Other products, fonts and company names and logos in this Manual are trademarks or registered trademarks of their respective holders and are hereby acknowledged.

This manual provides a complete introduction to all the functions and features of Founder ElecRoc Workflow Management System. However, some of them are available upon additional payment, the user interface and functions may vary accordingly. For more information, contact Founder's sales personnel.

Printed in the People's Republic of China

# Contents

<b>Chapter 1 System Requirements.....</b>	<b>1</b>
<i>1.1 Operating Environment .....</i>	<i>1</i>
1. Hardware Requirements.....	1
2. Software Requirements.....	1
<i>1.2 Operating System Configuration .....</i>	<i>2</i>
1. Windows Server 2003.....	2
2. Windows Server 2008.....	6
3. Windows 7 .....	9
4. Windows XP .....	12
5. Configure Display Properties.....	12
<b>Chapter 2 Install Required Applications.....</b>	<b>13</b>
<i>2.1 Microsoft SQL Server 2005 Express.....</i>	<i>13</i>
<i>2.2 Adobe Acrobat .....</i>	<i>14</i>
<i>2.3 Enfocuss PitStop.....</i>	<i>14</i>
<i>2.4 Founder EagleBlaster .....</i>	<i>15</i>
<b>Chapter 3 Install Founder ElecRoc .....</b>	<b>17</b>
<i>3.1 ElecRoc Server.....</i>	<i>17</i>
<i>3.2 ElecRoc Client on PC .....</i>	<i>25</i>
<i>3.3 ElecRoc Client on Mac .....</i>	<i>28</i>
<i>3.4 Remote Processors .....</i>	<i>32</i>
<i>3.5 Installation Tools.....</i>	<i>36</i>
1. Install Checkup.....	36
2. Trouble Shooting.....	36
3. Disable Firewall .....	38
4. Data Base Manager .....	38



# Chapter 1 System Requirements

## 1.1 Operating Environment

### 1. Hardware Requirements

#### Minimum Configuration

Component	Minimum Configuration
Master Server	Pentium 4 2.0 GHz; 2 GB Memory; 40 GB HD
Slave Server	Pentium 4 1.5 GHz; 1 GB Memory
Mac Client	G4 550 MHz; 512 MB Memory
PC Client	Pentium III 1.0 GHz; 512 MB Memory
Imposer + (Type C)	64 MB Video Memory
Network connection	100 MB Ethernet

#### Recommended Configuration

Component	Recommended Configuration
Master Server	Dual-core Xeon 2.66 GHz; 4 GB Memory; High Speed SCSI 120 GB HD; 1024x768 32-bit True Color
Slave Server	Pentium 4 3.0 GHz; 2 GB Memory
Mac Client	G5 2.5 GHz; 2 GB Memory; 1280x800 32-bit True Color
PC Client	Dual-core 2.8 GHz; 2 GB Memory; 1024x768 32-bit True Color
Imposer + (Type C)	128 MB Video Memory; 19 inch Monitor
Network connection	100 MB Ethernet

### 2. Software Requirements

Component	Software Requirements
Master Server	Windows Server 2003 SP2 Windows Server 2008 R2 Enterprise x64 SP1
Slave Server	Windows Server 2003 SP2 Windows Server 2008 R2 Enterprise x64 SP1
Mac Client	Mac OSX 10.6 Mac OSX 10.7 (with Java 1.5 or above)
PC Client	Windows Server 2003 SP2 Windows Server 2008 R2 SP1 Windows XP SP3 Windows 7

## 1.2 Operating System Configuration

### 1. Windows Server 2003

**Master Server:** If you want to install and run the Server and the processors on Windows Server 2003, you need to install Windows components **IIS, AppleTalk protocol, Macintosh File and Print Services**, and the applications [.NET Framework 3.5](#) and [SQL Server 2005 Express](#) into the OS. Both the .NET and SQL can be installed, either during the Server installation, or separately (.NET install program is available under the install directory \APPS\), but as to the SQL, a separate and manual installation before the Server installation is recommended.

**Slave Server:** If you install only the processors on Server 2003, you need to install the .NET. The IIS and SQL are not needed in this case.

**Client:** If you install the Client on Server 2003, you may need to install AppleTalk and Macintosh services only when you want to enable the Mac-related capacity, and install .NET only when you want to use remote 3D preview.

#### IIS

IIS is a Windows component, short for Internet Information Services.

1. Choose **Start > Settings > Control Panel > Add or Remove Programs > Add/Remove Windows Components** to open the **Windows Components Wizard**.

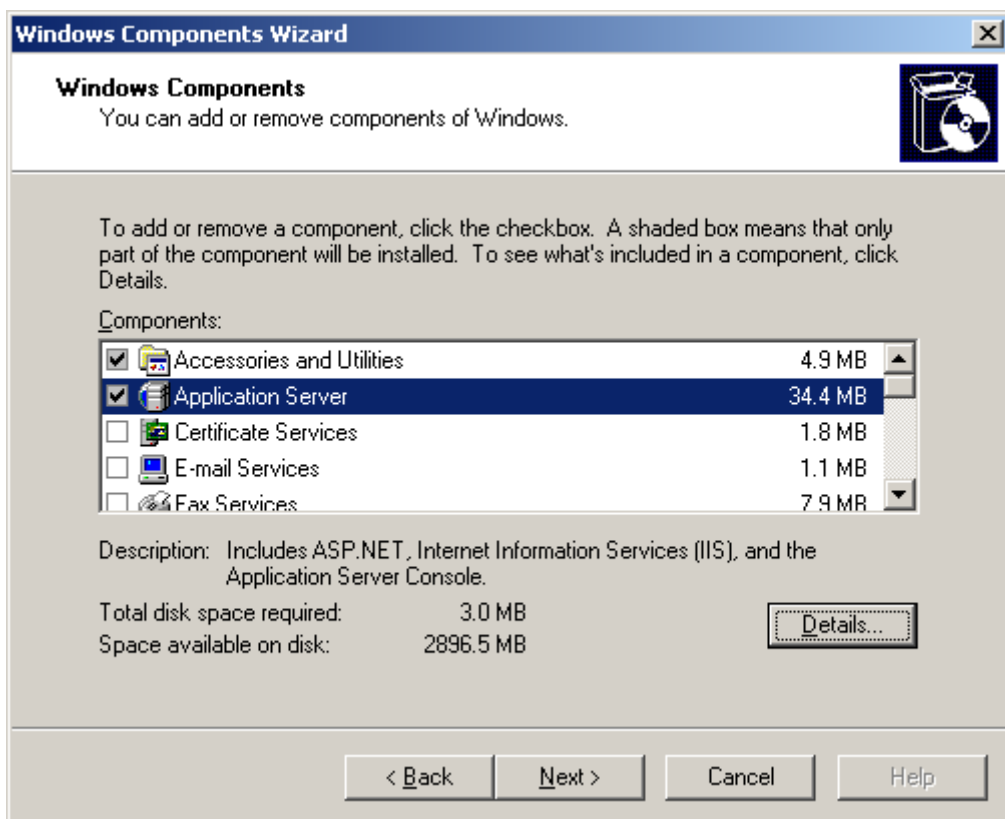


Figure 1

2. Check **Application Server**, and click **Details**.

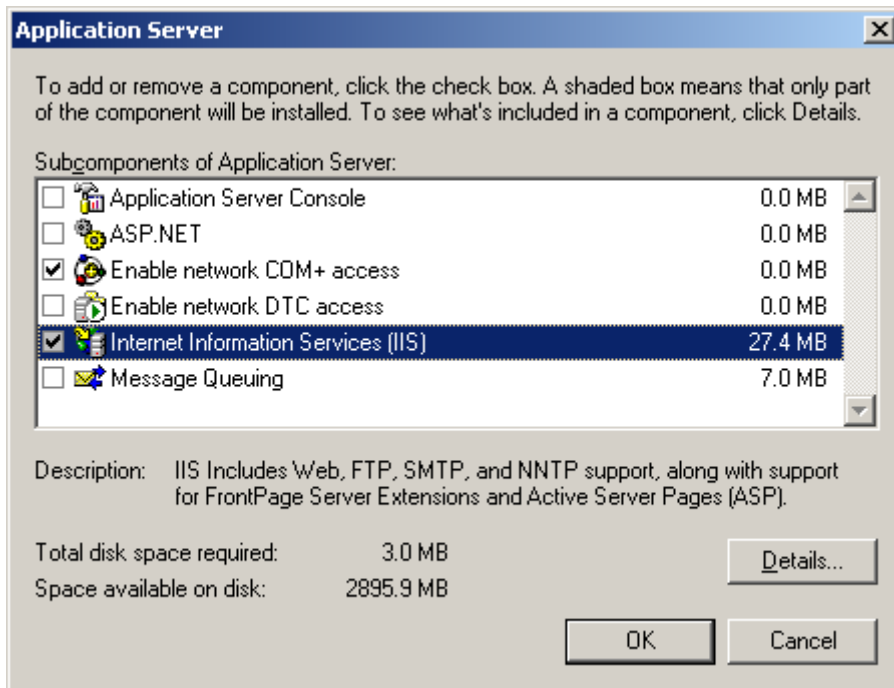


Figure 2

3. Check **Internet Information Services (IIS)** and click **Details**.

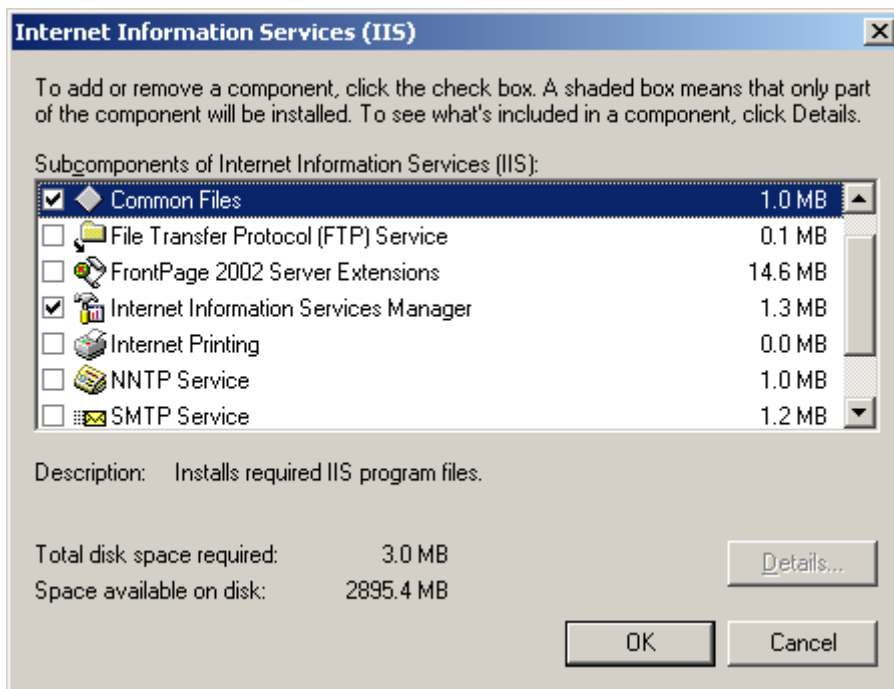


Figure 3

4. Make sure **Common Files**, **Internet Information Services Manager** and **World Wide Web Service** are checked.

5. Click **OK** to return, and then click **Next**.

## AppleTalk Protocol

The AppleTalk protocol enables Mac machines to communicate with your computer or printer, so that ElecRoc users can install fonts into ElecRoc from Mac computer.

1. Choose **Start > Settings > Network Connections**.
2. In the **Network Connections** window, right-click the **Local Area Connection** icon and choose **Properties**. The **Local Area Connection Properties** dialog appears.

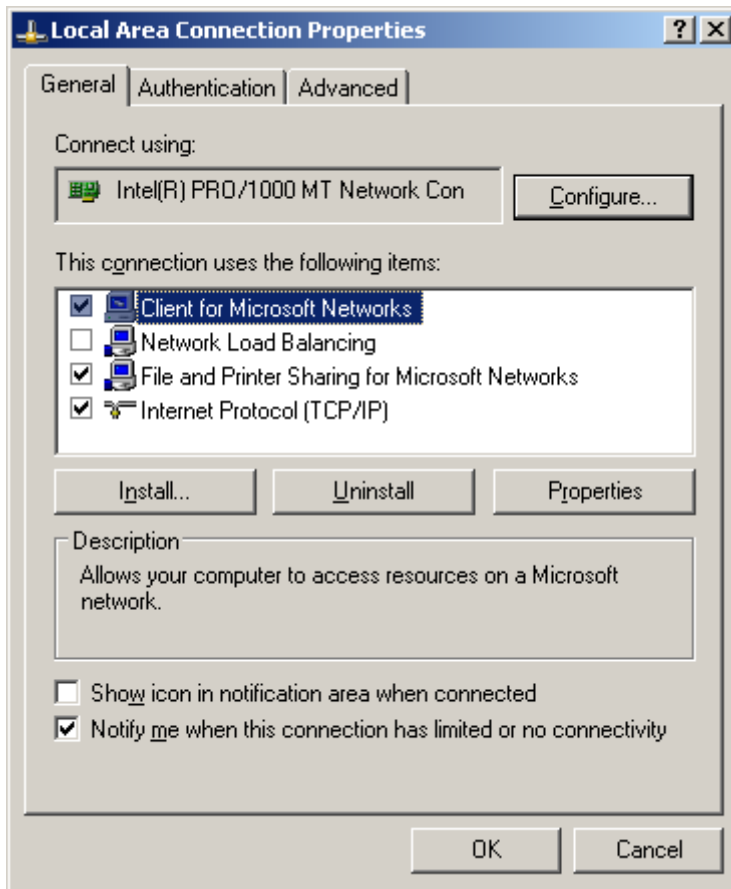


Figure 4

3. Select **Internet Protocol (TCP/IP)** and click the **Install** button. A dialog box then pops up, hinting you to select a network component type.



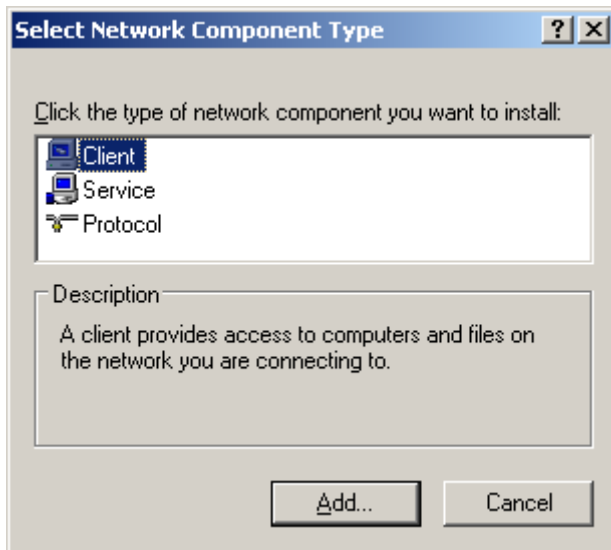


Figure 5

4. Select **Protocol** and click **Add**, the **Select Network Protocol** window appears, showing all available protocols for you to install.

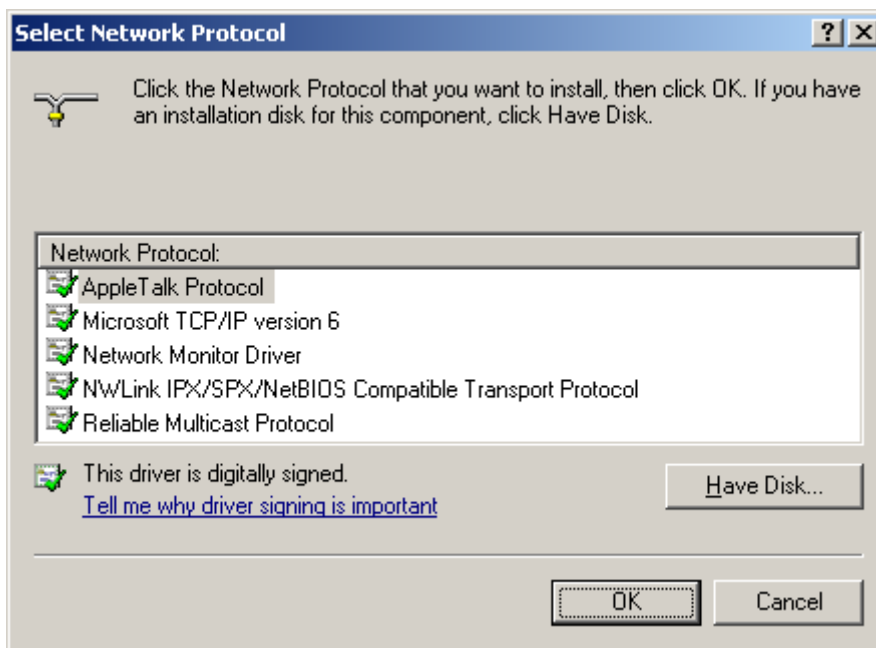


Figure 6

5. Choose **AppleTalk Protocol** and click **OK**. System will automatically complete the installation.

## Macintosh File and Print Services

This component enables you to share files and printers with connected Mac computers. It is also required to the Client that needs to own this capacity.

1. Open **Windows Components Wizard**, choose **Other Network File and Print Service** and click **Details**.
2. Check **File Services for Macintosh** and **Print Services for Macintosh**, and then

click **OK**.

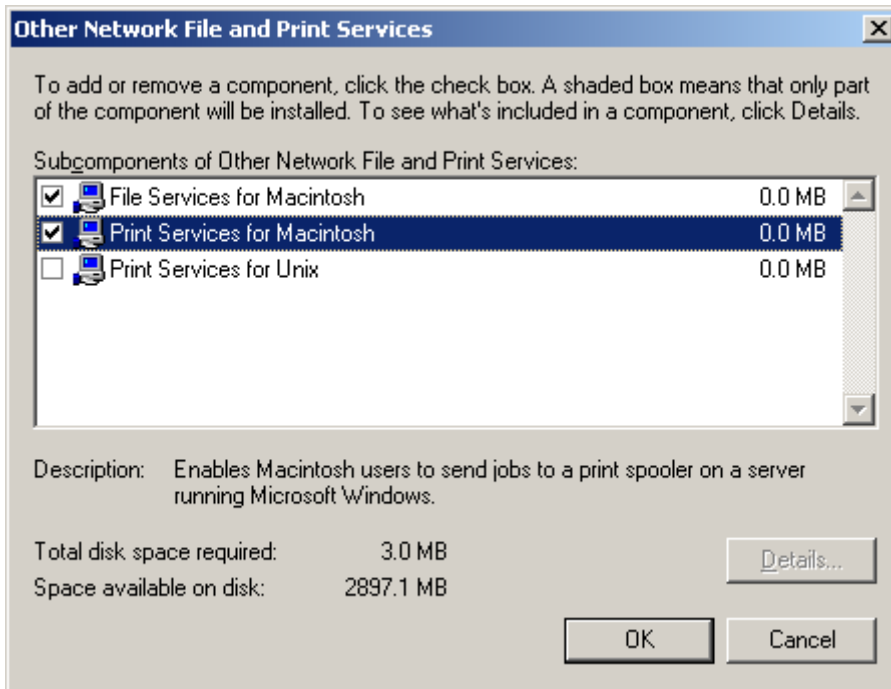


Figure 7

## 2. Windows Server 2008

**Master Server:** Window Server 2008 R2 Enterprise x64 SP1 is supported. If you want to install and run the Server and the processors on Server 2008, you also need to install **IIS**, [.NET Framework 3.5](#) and [SQL Server 2005 Express](#). The .NET Framework needs to be installed as per the instruction below. And as to the SQL, a separate and manual installation is recommended.

**Slave Server & Client:** The .NET is needed if you install processors on Server 2008. If you install the Client, .NET is required only when you want to use remote 3D preview, any other feature or application mentioned above can be ignored.

### IIS

1. Open the **Server Manager** (right-click **Computer** on the desktop and choose **Manage**), choose **Roles > Add Roles**, to start the **Add Roles Wizard**.
2. Choose **Server Roles**, check the **Web Server (IIS)** option, and then click **Next**.

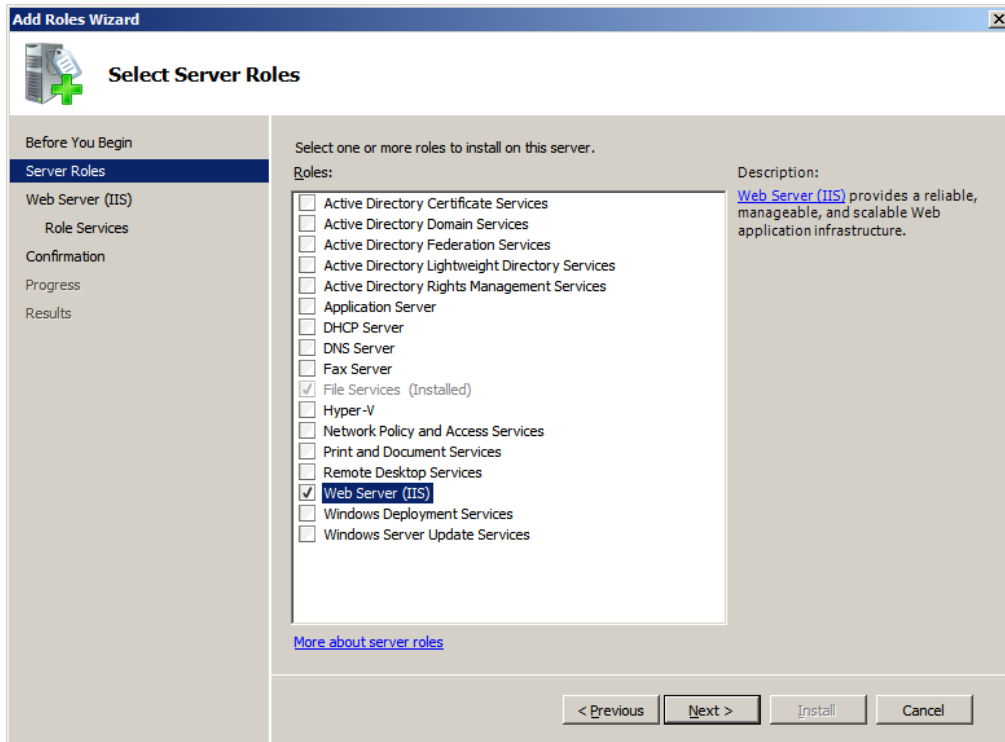


Figure 8

3. In the follow-up window, you see that some options are ticked by default. Keep these options being checked, and moreover, make sure the sub-options under **Application Development** and **Management Tools** are all checked.

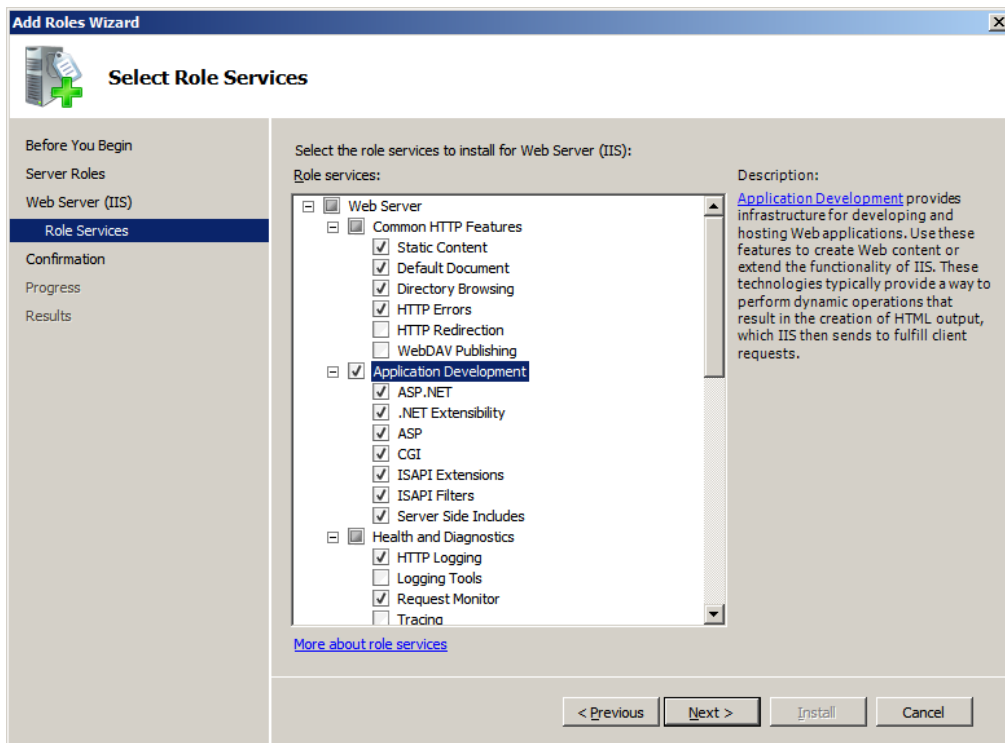


Figure 9

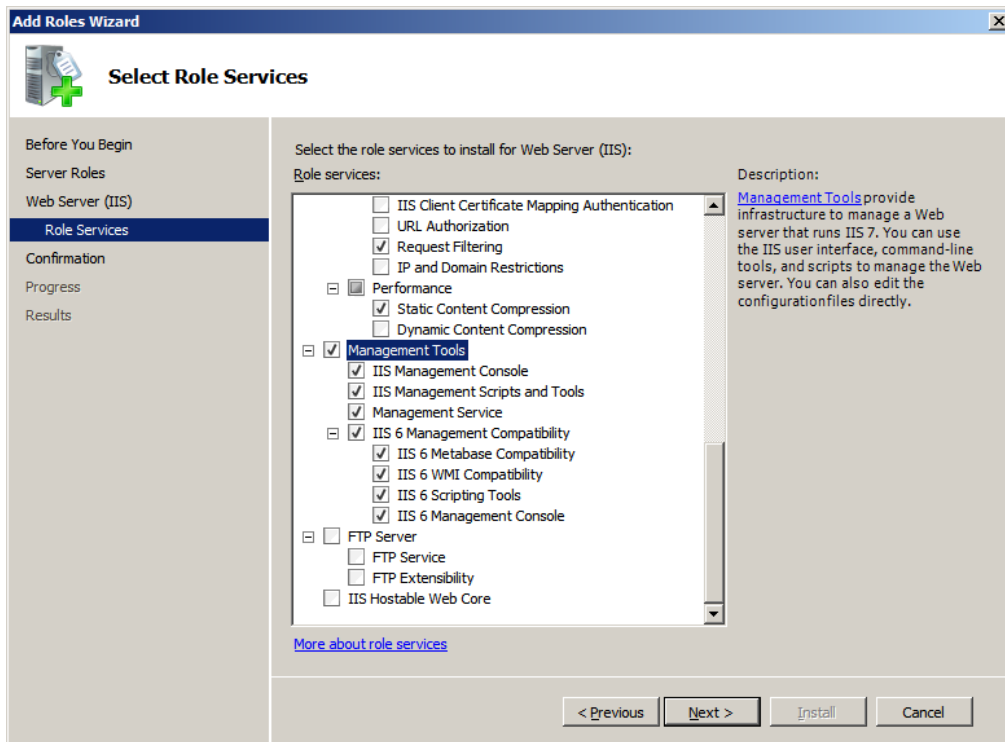


Figure 10

4. Click **Next**. In the confirmation window, click **Install** to start the installation.

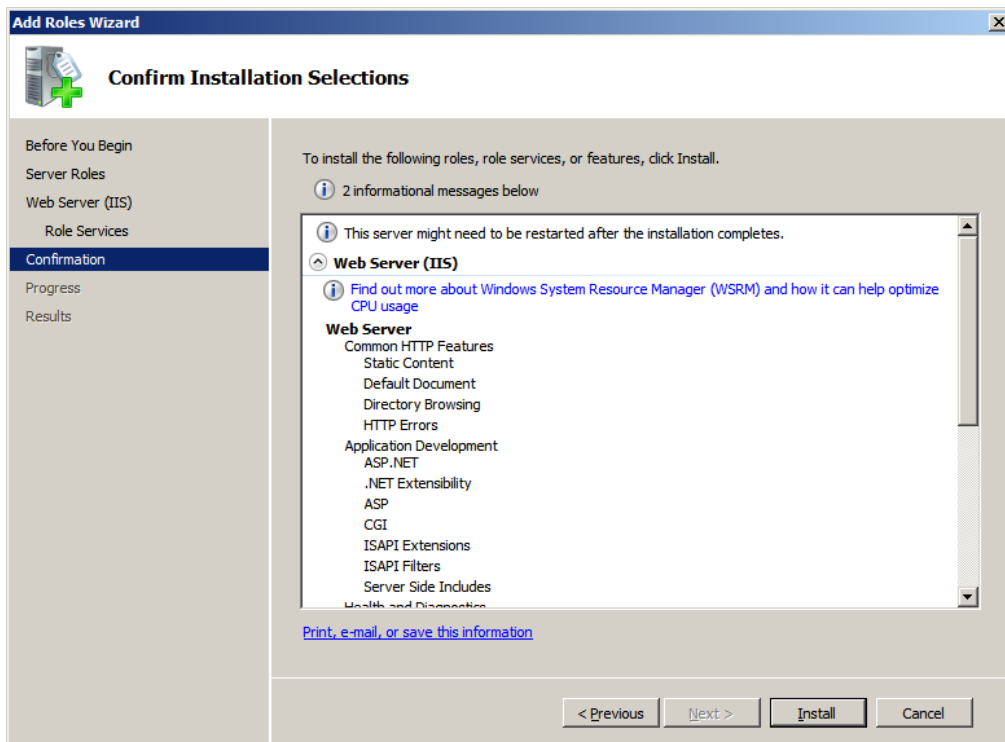


Figure 11

## .NET Framework

We recommend you to install .NET Framework on Server 2008 only in this way: open

**Server Manager**, choose **Features** > **Add Features**, to start **Add Features Wizard**.

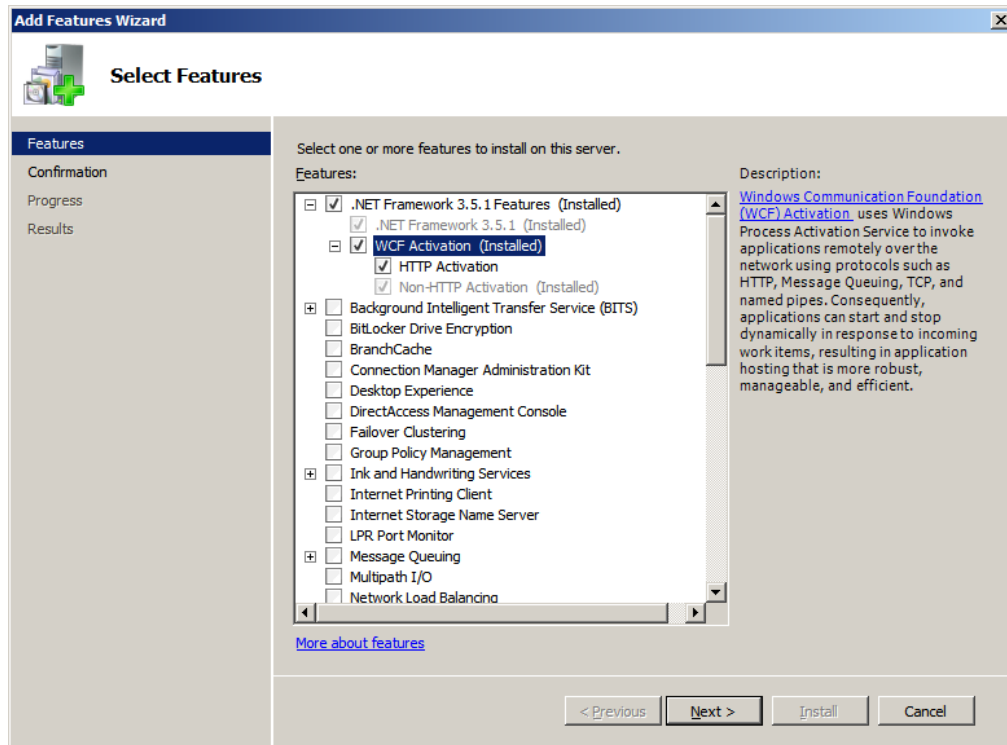


Figure 12

Choose **Features**, and then check **.NET Framework 3.5.1 Features** (ensure all the sub-options are ticked).

### 3. Windows 7

**Master Server:** Window 7 Professional 32 bit is supported, though we don't suggest it for that it probably can serve no more than 5 ElecRoc Clients. If you want to install and run the Server and the processors on Window 7, you need to turn on some Windows features including **IIS** and **.NET Framework 3.5.1**, and install the [SQL Server 2005 Express](#) as well. As to the SQL, a separate and manual installation is recommended.

**Slave Server & Client:** Please turn on **.NET** if you install processors on Window 7. If you install the Client, ignore the features or applications mentioned above, and turn on **.NET** only when you want to use remote 3D preview.

#### Windows Features

Choose **Start** > **Control Panel** > **All Control Panel Items** > **Programs and Features** > **Turn Windows features on or off** to open the **Windows Features** setup window.

In addition to those enabled by default, you need also to check the features as follows:

1) Choose **Internet Information Services** > **Web Management Tools**, check all the sub-components.

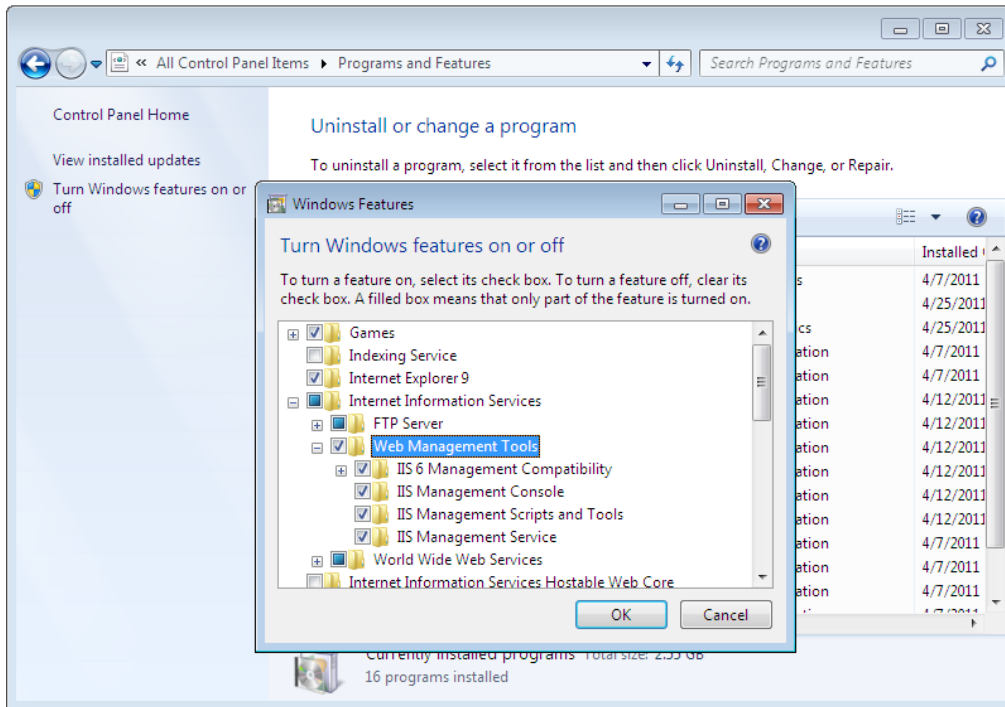


Figure 13

2) Choose **Internet Information Services > World Wide Web Services > Application Development Features**, check all the sub-components.

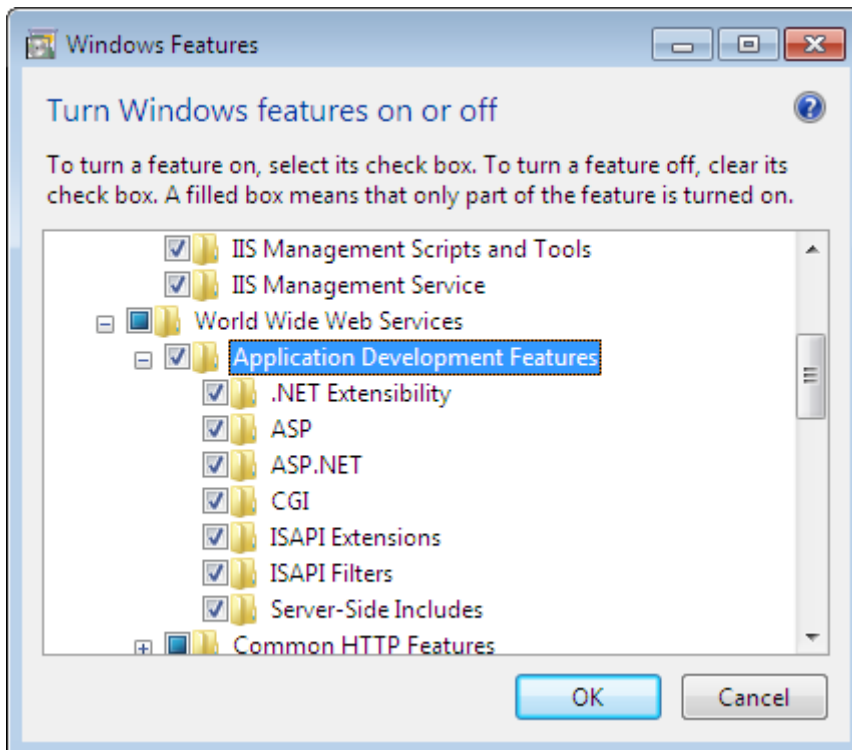


Figure 14

3) Choose **Internet Information Services > World Wide Web Services > Common HTTP Features**, check **Default Document**, **HTTP Errors**, **HTTP Redirection**, and

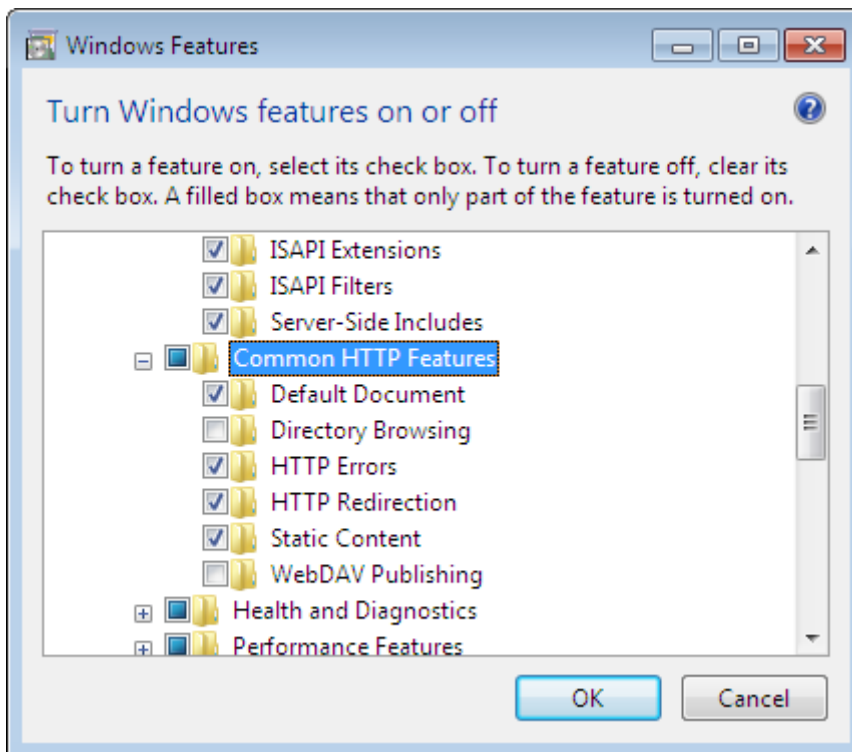
**Static Content.**

Figure 15

4) Choose **Microsoft .NET Framework 3.5.1**, check all the two sub-components.

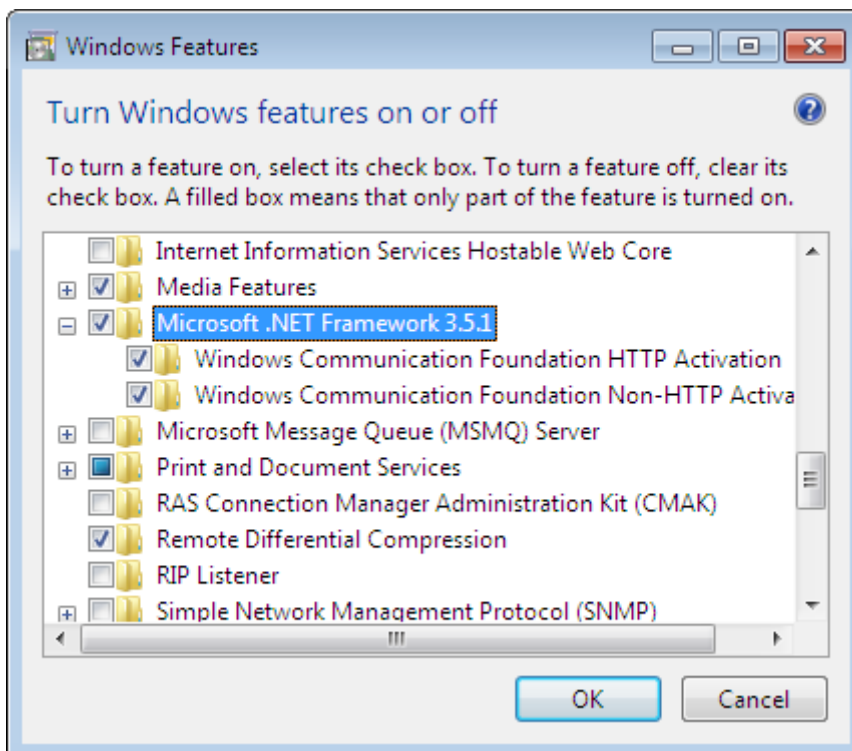


Figure 16

## 4. Windows XP

Windows XP can be used to install and run the Client. If you want to use remote 3D preview, please separately install .NET (available under the install directory \APPS\).

## 5. Configure Display Properties

To display the user interfaces both of the Server and the Client properly, you need to ensure the least configuration as follows (On Windows XP as an example).

1. Double-click **Display** in the **Control Panel**, or right-click on your desktop and choose **Properties**, to open the **Display Properties** dialog. Check the **Settings** tab.

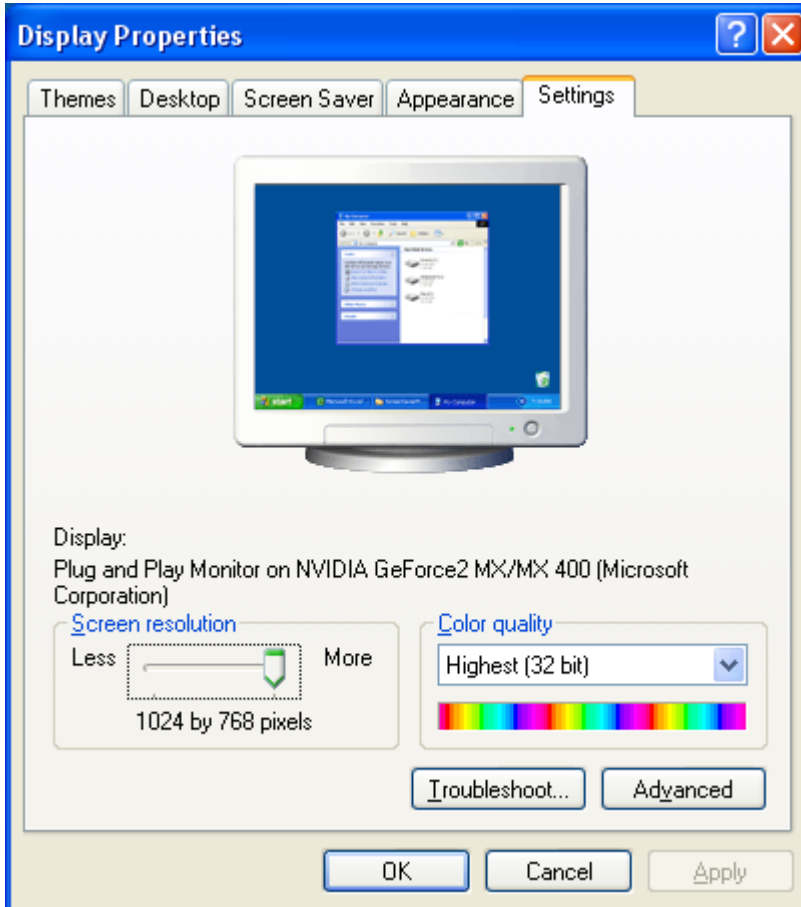


Figure 17

2. Adjust **Screen resolution** to **1024 by 768 pixels**, and **Color quality** to **32 bit**. And then click the **Advanced** button.
3. Check the **Monitor** tab. Set **Screen refresh rate** to **75 Hertz** or higher and click **OK**.
4. Return to the above dialog, click **OK**.



## Chapter 2 Install Required Applications

### 2.1 Microsoft SQL Server 2005 Express

The Microsoft SQL Server 2005 Express edition is required for ElecRoc Server. A manual and separate installation is recommended before the Server installation, though the Server install program can detect whether your OS has installed this application, and guides you to install it if it finds no SQL is available.

The detailed installation steps are omitted here, but note that, during the installation, you need to cross out **Hide advanced configuration options**.

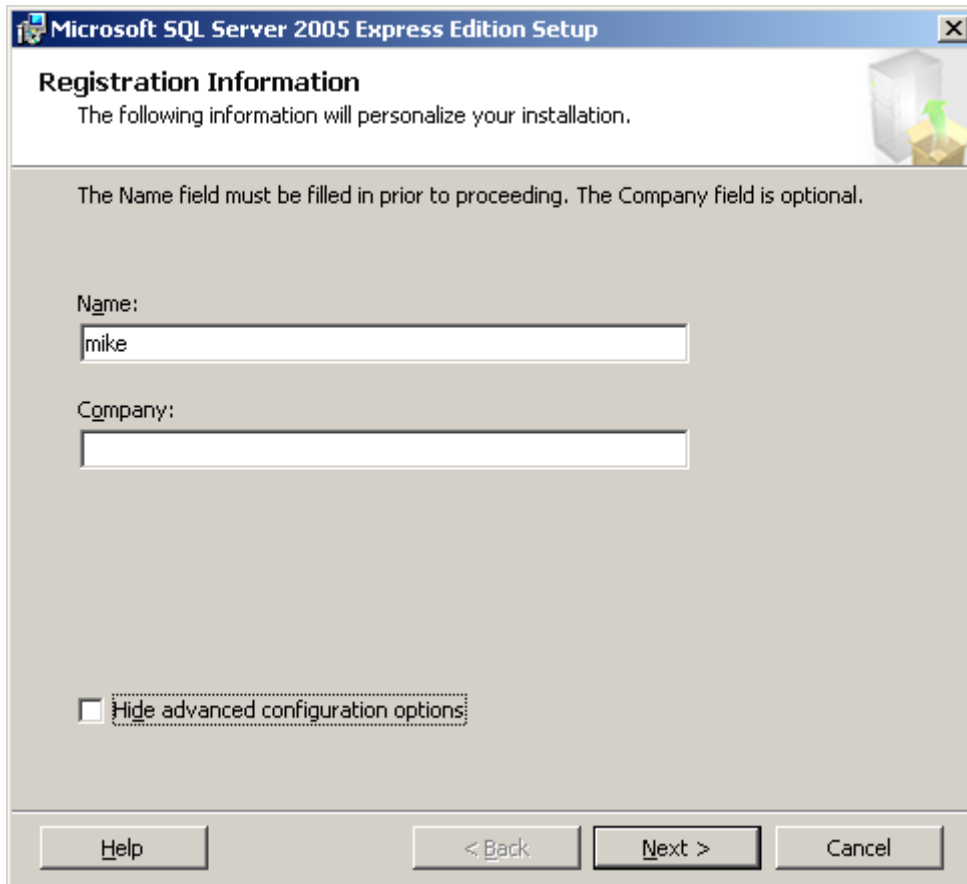


Figure 18

And in the **Instance Name** window, check **Default instance** instead of **Named instance**.

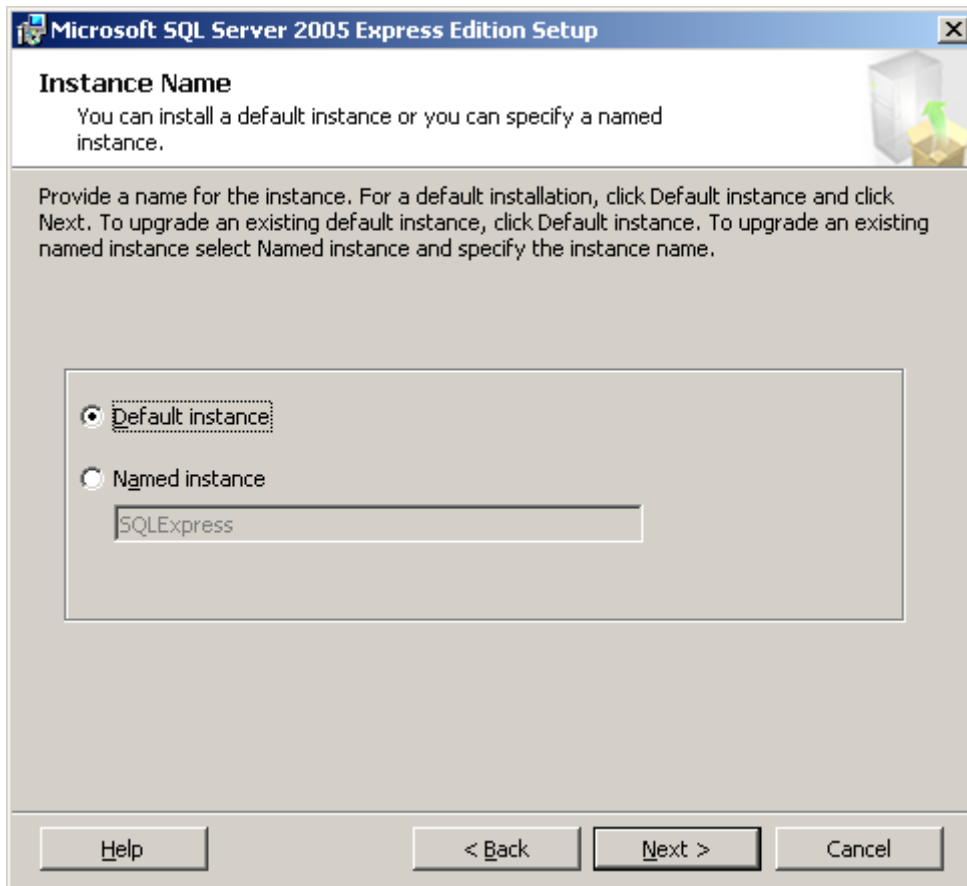


Figure 19

## 2.2 Adobe Acrobat

Before you install ElecRoc, you need to install Adobe Acrobat at least version 7.0 on both the server and client. It is required as you use processors like Trap, Imposer + (Type C), Auto Composer, the modules like preflight navigator, PDF compare and zone trap. Auto Composer requires at least version 8. Zone trap, preflight navigator and PDF compare require 9 or higher version.

For details on the installation, refer to related instructions provided by Adobe.

## 2.3 Enfocus PitStop

ElecRoc supports Enfocus preflight. To correctly check PDF files by using this preflight, you need to install the Enfocus PitStop Server on ElecRoc server.

Please note that non-Server versions, such as 7.0 and 7.5 designed for personal users, are not supported in ElecRoc. The Enfocus PitStop Server can be obtained from Enfocus. And you need to install the Enfocus PitStop Server before you install ElecRoc Server.

PitStop Server lower than v4.0 (not including v4.0):

- 1) Install PitStop Server and register;
- 2) Search the file **EnfocusPitStopLibraryAA.dll** in PitStop Server's program folders, and then copy it into ElecRoc's directory **PreflightJTP\bin\Preflight\**;
- 3) Double-click the file **register\_PitStopPreFly.bat** under ElecRoc's directory

**PreflightJTP\bin\Preflight\;**

4) Restart the 3rd Party Preflight processor on ElecRoc Server.

PitStop Server v4.0~4.08 (not including v4.08):

1) Install PitStop Server and register;

2) Double-click the file **register\_PitStopPreFly4.0.bat** under ElecRoc's directory **PreflightJTP\bin\Preflight\;**

3) Restart the 3rd Party Preflight processor on ElecRoc Server.

PitStop Server v4.08 and above:

1) Install PitStop Server and register;

2) Search the files **ipworks6.dll**, **MutatorLibraryAB.dll**, **PitStopLibraryAB.dll**, and **xerces-c\_2\_8.dll** in PitStop Server's program folders, and then copy them into ElecRoc's directory **PreflightJTP\bin\Preflight\;**

3) Double-click the file **register\_PitStopPreFly4.0.bat** under ElecRoc's directory **PreflightJTP\bin\Preflight\;**

4) Restart the 3rd Party Preflight processor on ElecRoc Server.

## ***2.4 Founder EagleBlaster***

EagleBlaster is an application that outputs screened tiff to various CTP/CTF devices. Its install program and user manual are available under the install directory \EagleBlaster.



## Chapter 3 Install Founder ElecRoc

Founder ElecRoc is a distributed digital workflow management system. The Server, the Client, and most of the processors can reside independently on various LAN computers, not limited to a same machine.

To be specific, the Server is installed along with the Imposer and AutoComposer, requiring high performance computing capabilities, such as dual core processor. The Client can be installed on PC or Macintosh machines connected to the server, binding TPL Editor and Imposer + (Type C) together. Other processors, including Preflight, Trap, and output processors such as Rasterizer and pre/post-RIP Proof, can be separately installed and run on different computers, on either the server, or client, or even other connected computers. Note that some of the output processors such as Printer, Proof, Rasterizer and etc., also require a lot of computing resources. In addition, we do not recommend you to install ElecRoc into a computer that has already deployed Founder EagleRIP.

### 3.1 ElecRoc Server

The installation steps on Windows Server 2003/2008 are the same on the whole. Please perform as follows to install ElecRoc Server and/or processors (take 2003 as example):

Before the installation, you'd better turn off your firewall such as Windows Firewall. And after the installation, please run the WinFirewallTool.exe (under the Install DVD folder\Tools\Windows Firewall Tool\).

1. Insert the ElecRoc Install DVD into the DVD-ROM drive. Run the file **Autorun.exe** in the DVD root directory to start the installation. The following window appears.



Figure 20

2. Choose **Install Server**. The install program starts collecting related information, and after that, displays the welcome window.

**Note:** It will detect whether you have installed the .NET Framework, if not, it runs the .NET install program at first. You can also install this application separately.



Figure 21

3. Click **Next**. The install program shows the end-user license agreement.

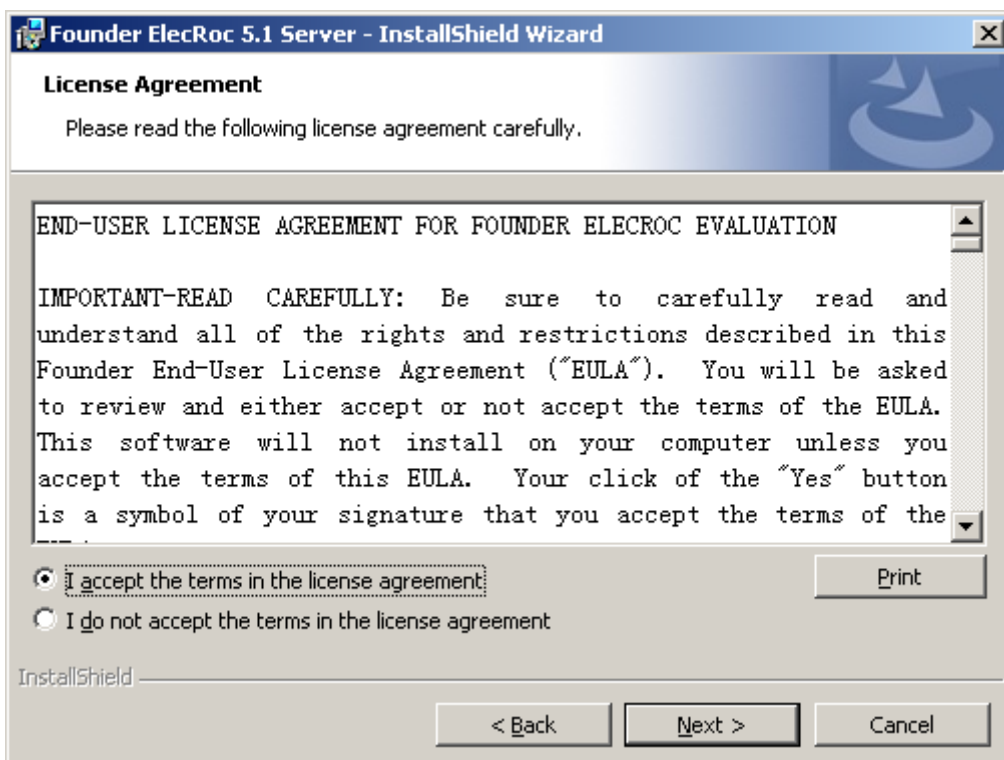


Figure 22

4. Accept the terms and click **Next**. The install program prompts you to specify a destination. Note that the Server cannot be installed in the operating system partition.

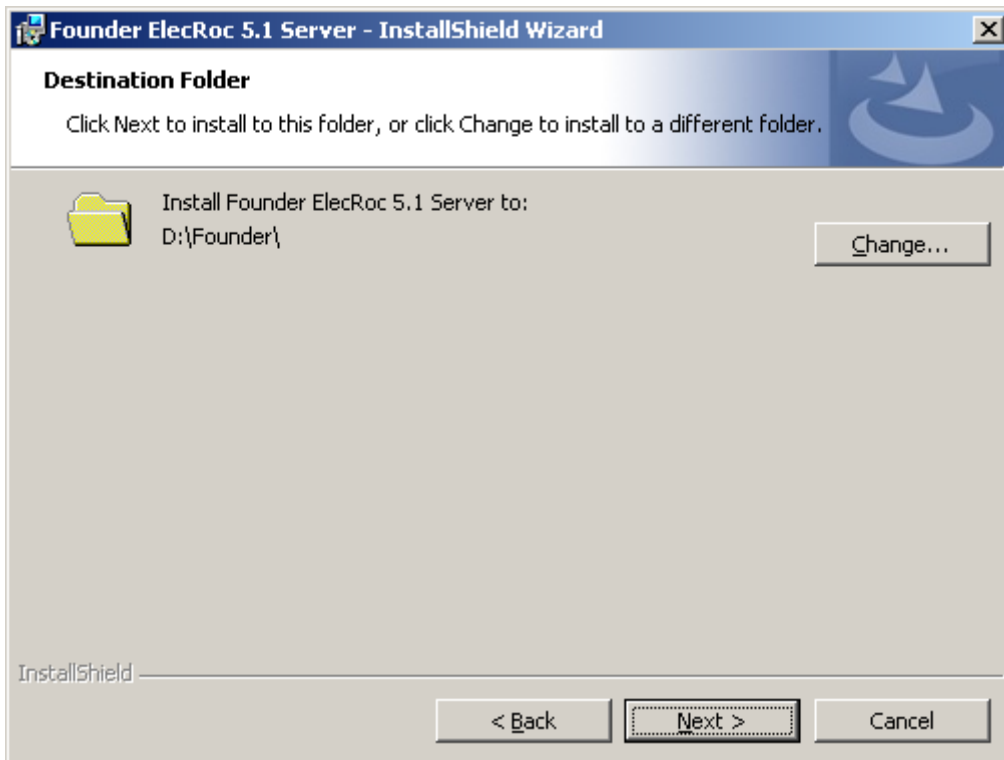


Figure 23

5. Click **Next**. The **Server Type** dialog appears.

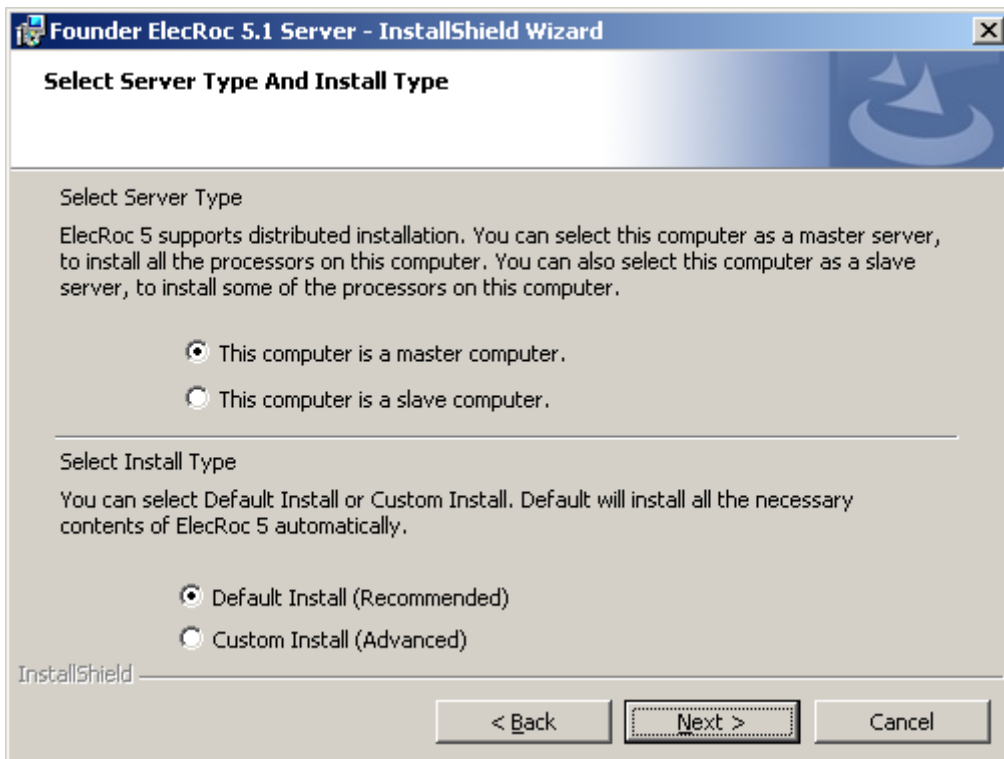


Figure 24

**Master computer:** To install the Server and the processors on current computer. For the first time to install ElecRoc, you need to choose this to have the Server installed.

**Slave computer:** To install only part of the processors on current computer. In this case, you must have already installed ElecRoc Server on the master computer. Due to that the processors are installed remotely on a computer other than the master computer where you install ElecRoc Server, they are also named remote processors.

**Note:** 1) Generally you are NOT recommended to choose **Slave computer** and install remote processors into a UAC-enabled Server, i.e. Windows Server 2008, because in this case you may need to disable the UAC, or make special configuration (see [section 3.4](#) for details). 2) If you want to install more processors after the Server installation, regardless of **master** or **slave computer**, you do NOT need to run the Server install program over again. Instead, choose **Start > Programs > Founder ElecRoc > Configuration Tools > Processor Configuration**. In this way, you can skip to the step 11 (see below).

**Default Install:** This option is recommended. You don't need to specify the detailed program features you want to install (step 7).

**Custom Install:** If you choose this option, you can specify the program features.

6. If you choose **Master computer** and click **Next**, the install program prompts you to choose whether to install the dongle driver or not.

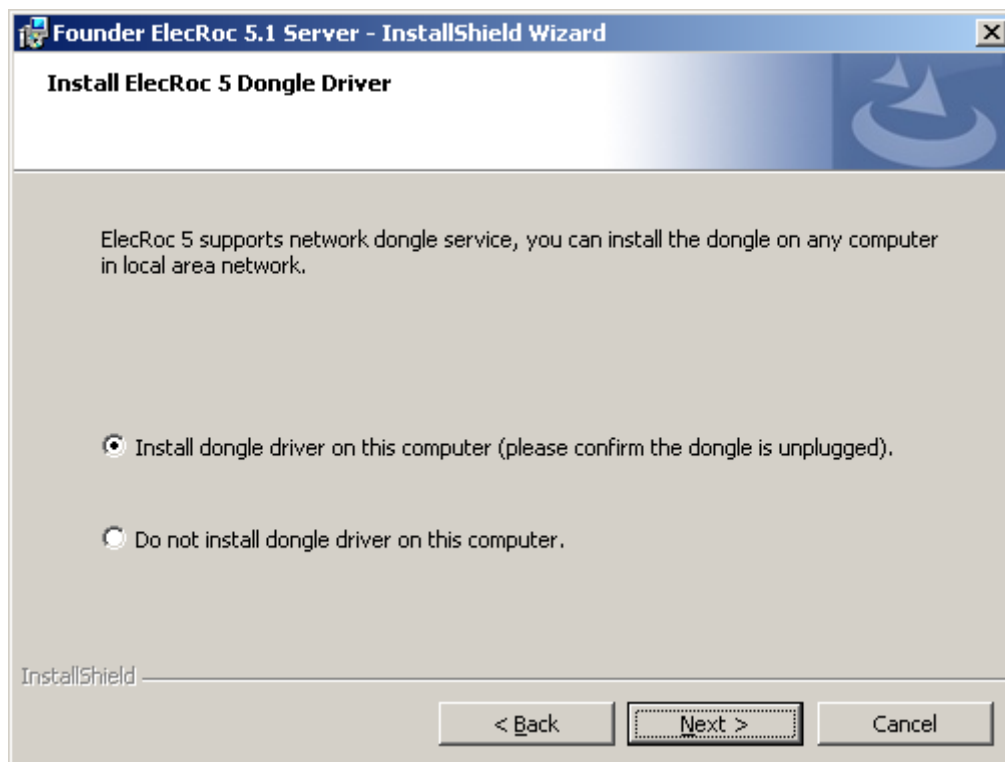


Figure 25

In case that your dongle is installed in current computer, choose the first option **Install dongle driver on this computer**. In this case, the program installs the dongle driver in the next step. In case that the dongle is installed in other connected computer, choose the second option **Do not install dongle driver on this computer**.

7. It then pops up the feature setup dialog if you have chosen **Custom Install**, in this dialog you can customize the features to be installed. The **Space** button enables you to



check the disk space required for the installation of your selected features.

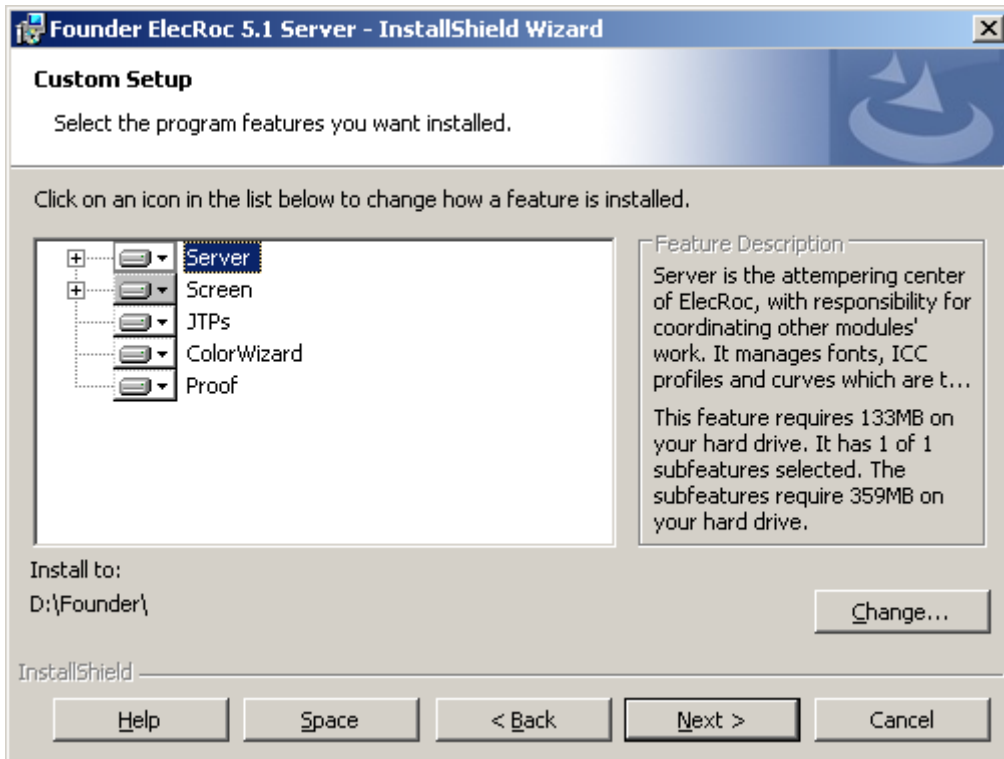


Figure 26

8. The program prompts that it's ready to begin the installation. Click **Install**.

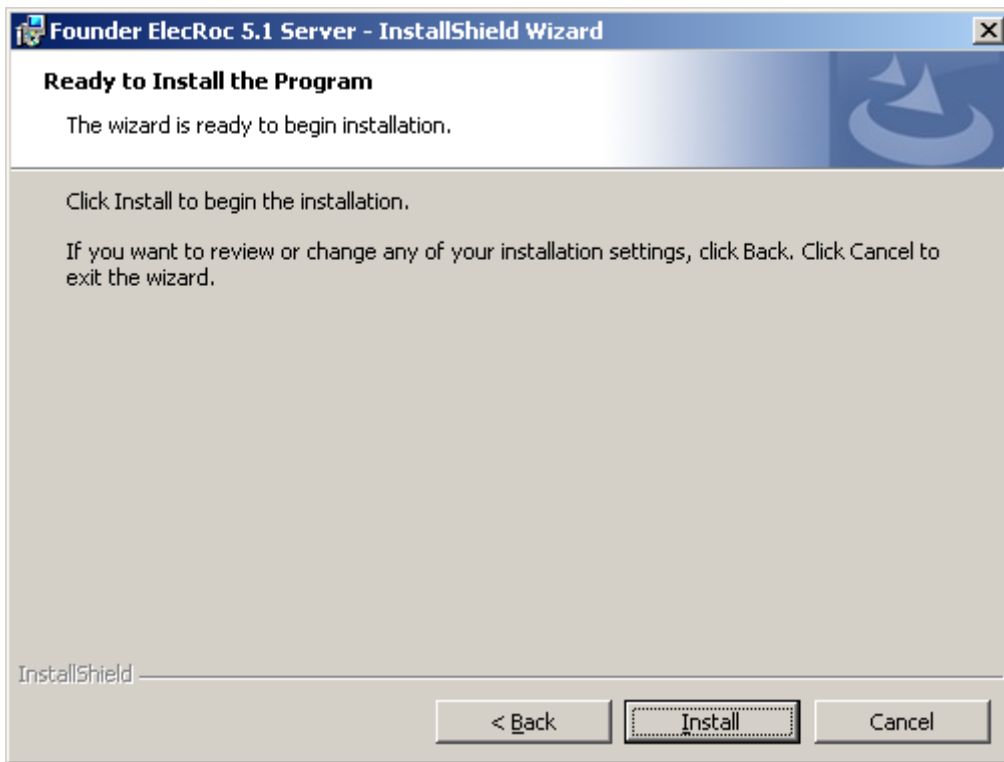


Figure 27

9. It starts the installation. The bar shows the progress. During the progress, it guides you to install SQL Server 2005 Express in case that you haven't installed this application.

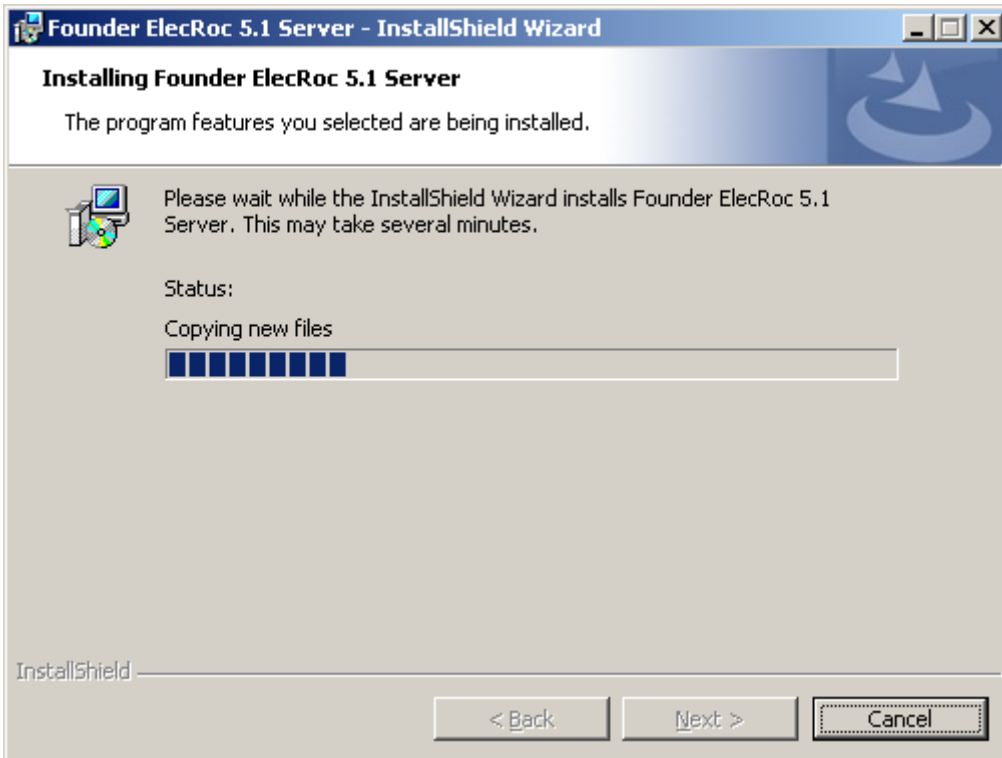


Figure 28

10. When the bar reaches 100%, it prompts that the installation is successful. Click **Finish** to close the window.

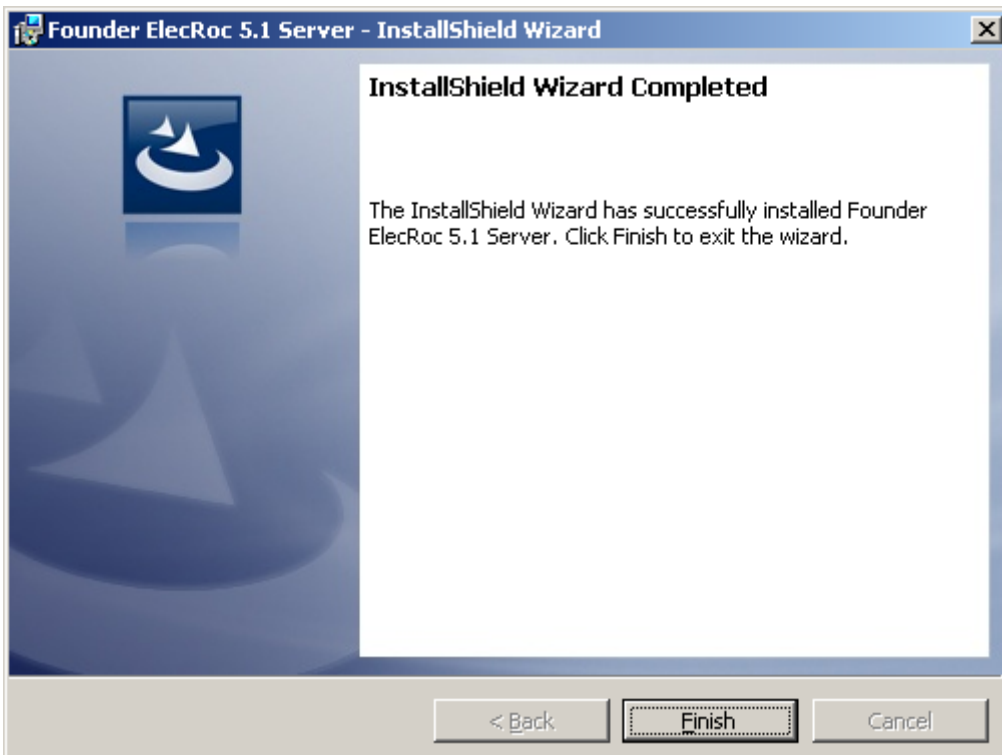


Figure 29

11. Next, it pops up the processor configuration dialog for you to specify the ElecRoc server and the computer where the dongle is installed. The default name is the name of your current computer, but you can also specify other connected computer.

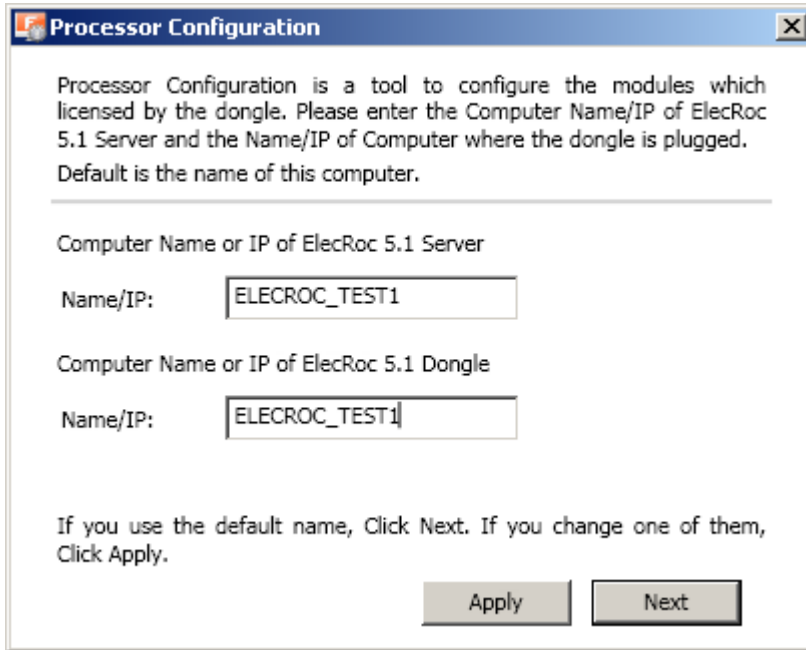


Figure 30

12. The program then displays the processor list. It reads the license information of the dongle, and then lists the processors allowed by the dongle. Check the processors you want to install and then click **Next**.

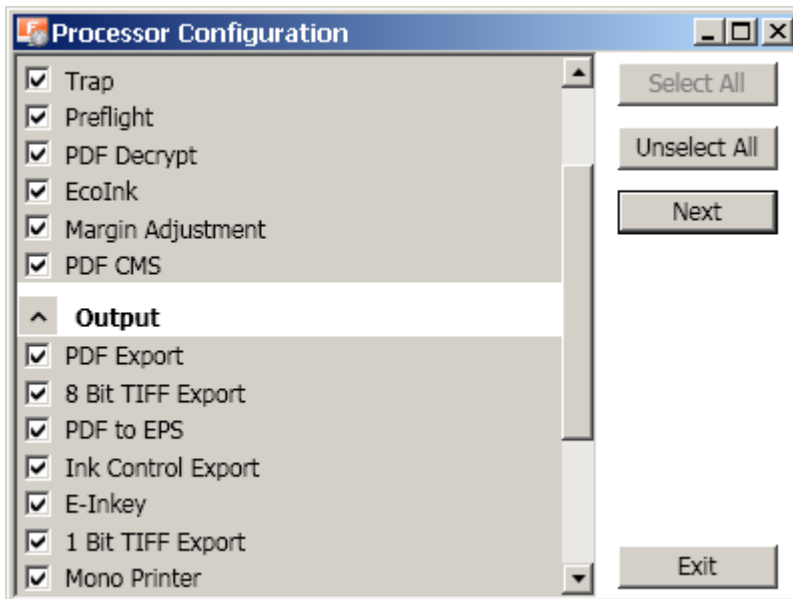


Figure 31

13. The install program displays the setup dialogs for the processors, one by one. In these dialogs, you can customize each processor's name and/or related property. The following figure shows the setup dialog for the PDF Rasterizer processor. That for most

other processors is basically the same.

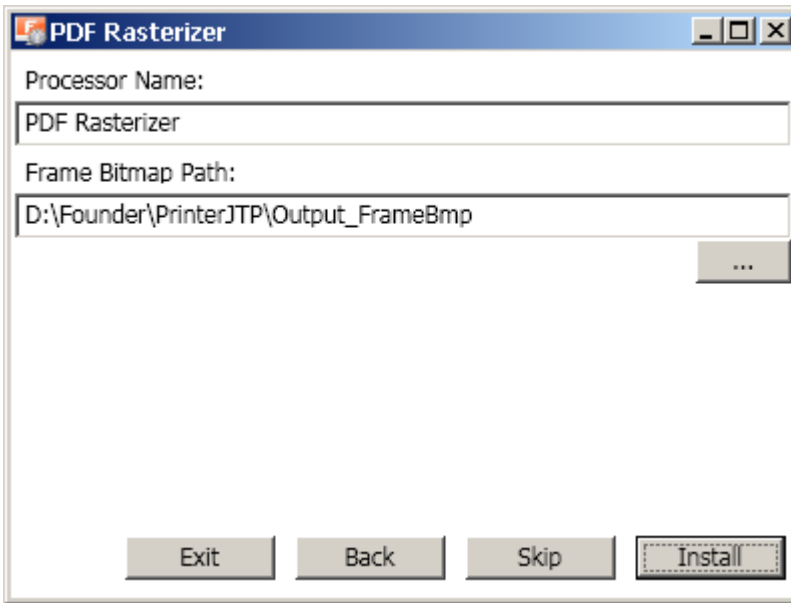


Figure 32

14. The setup dialog for the print and proof is a little different. You need to specify not only the processor name, but also the printer and the printer driver. Take that for proof processor as example:

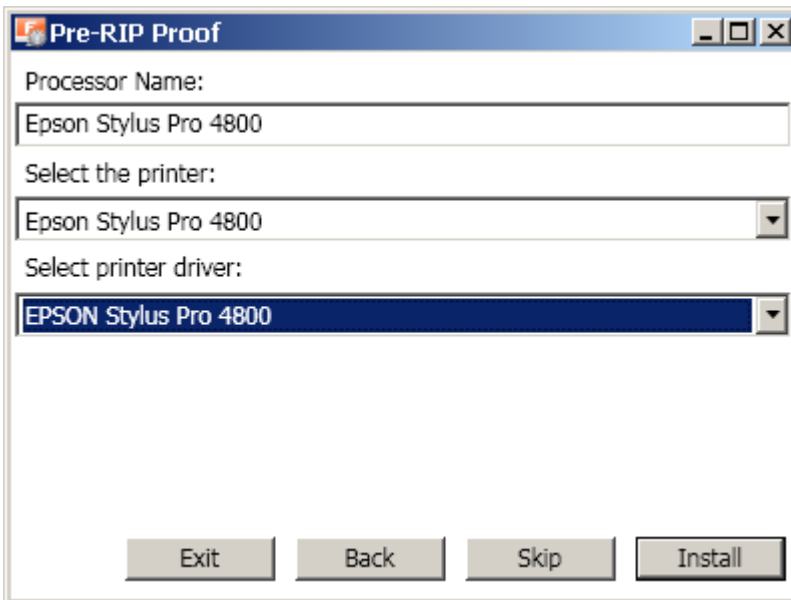


Figure 33

15. After setups, it prompts that the installation is completed. Click the prompt to exit.

**Note:**

*About the un-installation. The un-installation can be performed as follows:*

1. Before the un-installation, please use ElecRoc's backup tools (Client menu **Tools** > **Archive Manager** or **Backup Manager**, and the separate database backup tool provided in the install DVD) to backup your useful resources such as jobs, templates,

database, and various kinds of profiles.

2. Choose **Start > Settings > Control Panel > Add or Remove Programs > Founder ElecRoc 5.1 Server > Remove** to start the un-install program.

3. It asks you the confirmation for the un-installation. Click **Yes** to confirm.

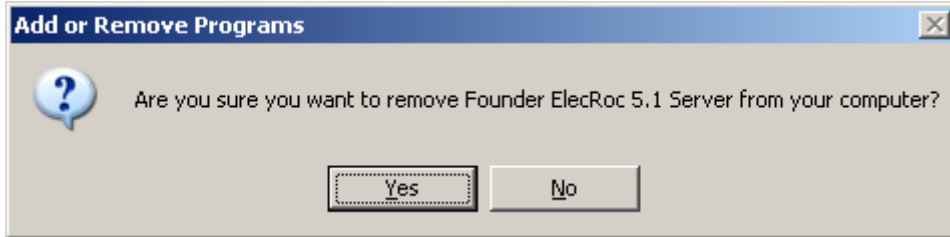


Figure 34

4. It starts to gather related information. After that, it prompts that the un-installation will delete all the jobs, templates and files. Click **Yes** to continue. Or you can click **No** and backup these resources if you haven't.

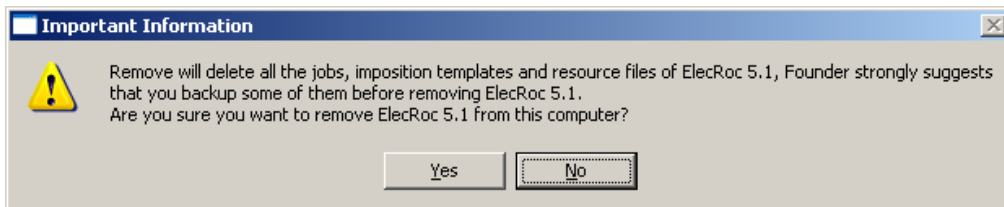


Figure 35

5. It starts to remove ElecRoc, showing the un-install progress and remaining time. Wait till it completes the un-installation.

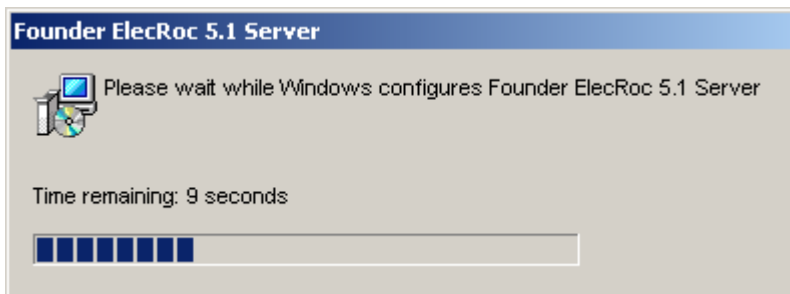


Figure 36

## 3.2 ElecRoc Client on PC

Perform as follows to install (on Windows XP as example):

1. Run the install file **Autorun.exe**, and choose **Install Client**. The install program starts collecting related system information, and after this, it displays the welcome window.

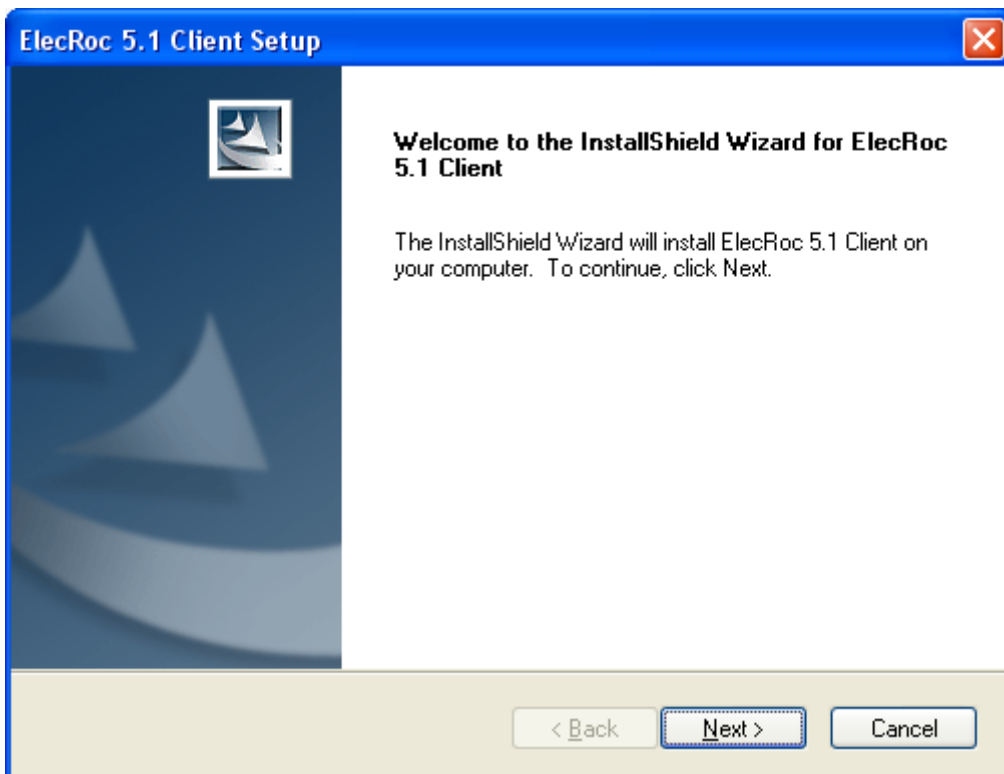


Figure 37

2. Click **Next**. The install program prompts you to specify a destination. You can use the default folder, or specify another with the **Browse** button. And then, click **Next**.

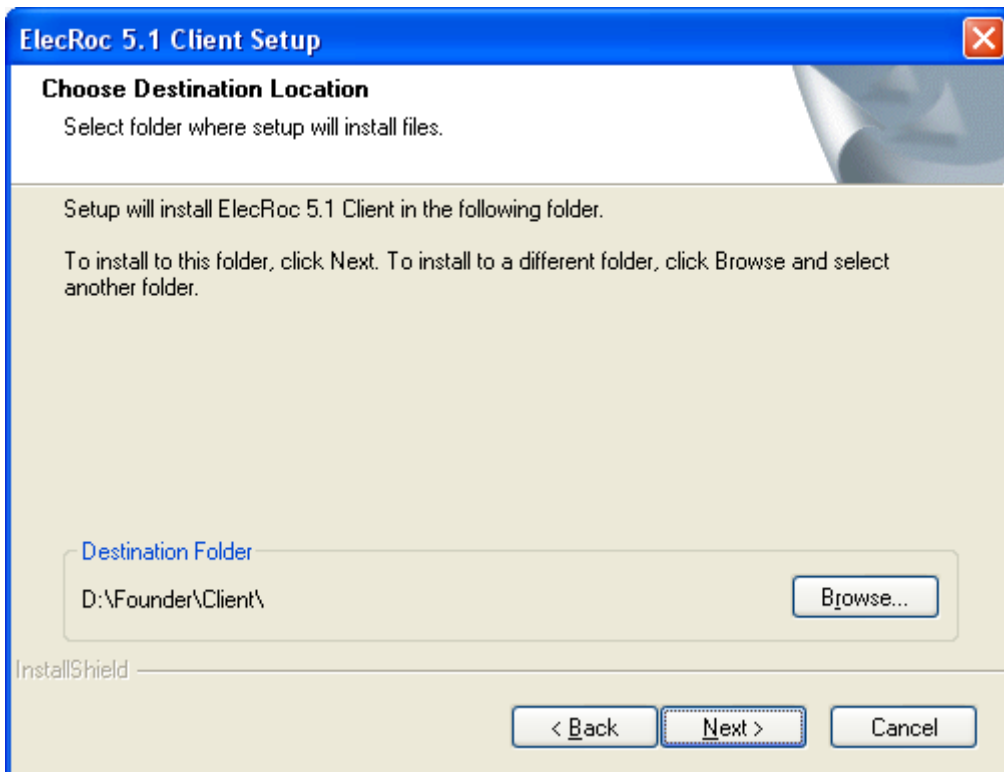


Figure 38

3. Click **Next** to confirm the settings.

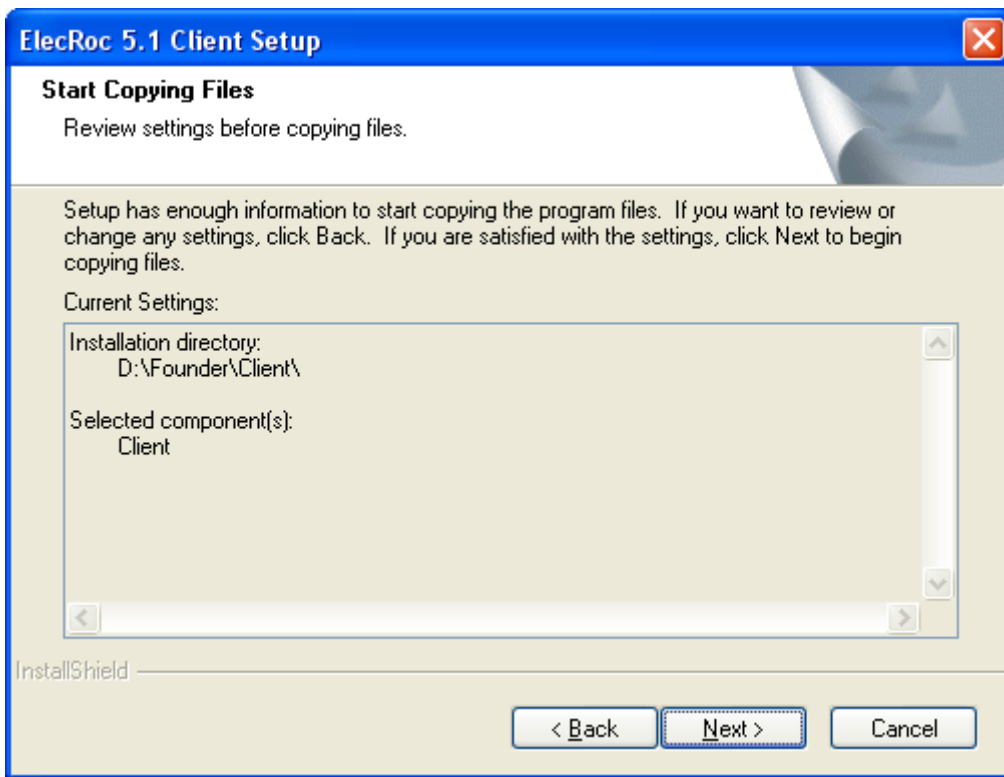


Figure 39

4. The program starts copying files. The bar shows the copying progress.

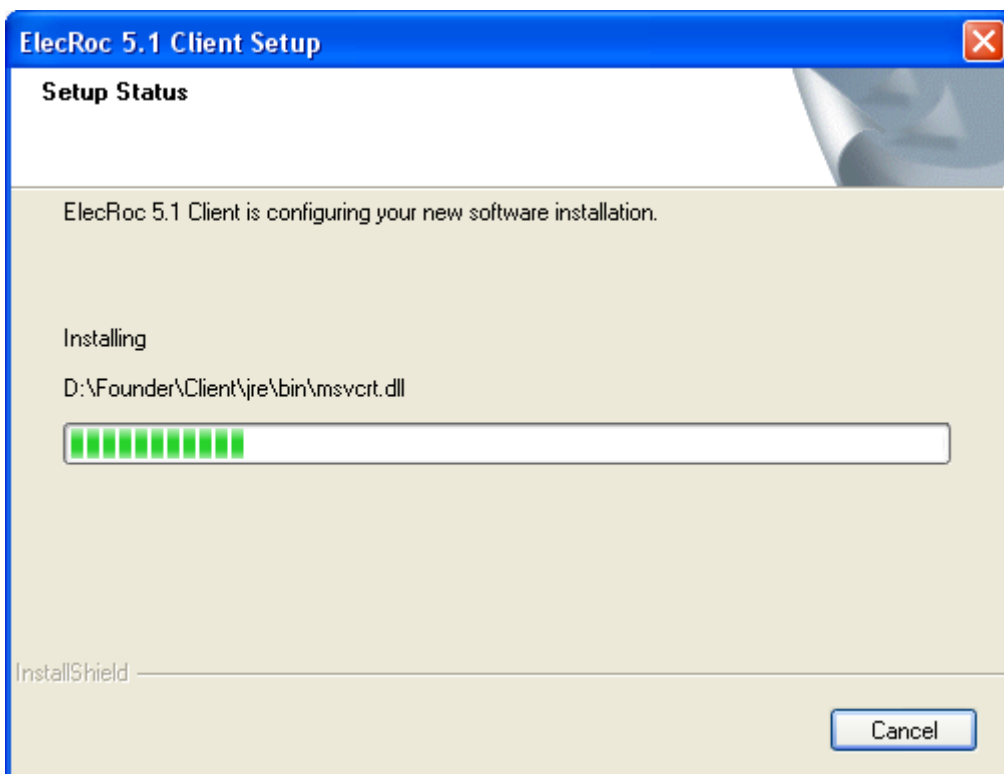


Figure 40

5. When the bar reaches 100%, it shows the complete window. Click **Finish** to complete.

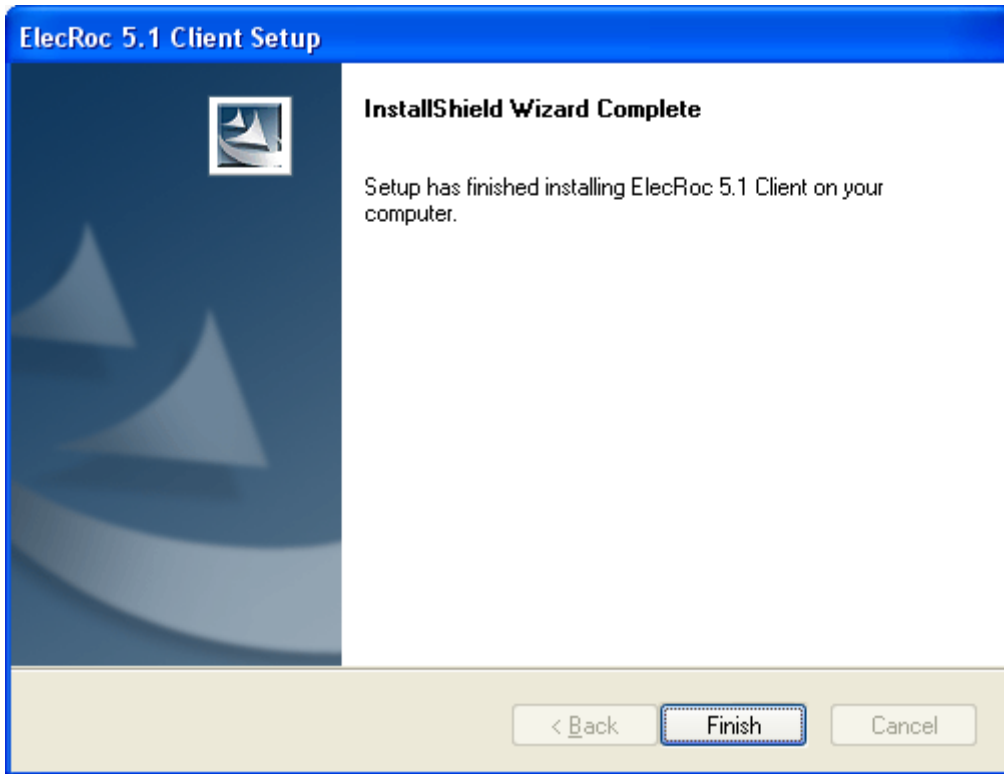


Figure 41

### **3.3 ElecRoc Client on Mac**

1. Insert the ElecRoc Install DVD into the DVD-ROM. Find out **ElecRoc 5 Client.pkg** in the install directory \Client\MAC\.

**Note:** *If you access the install file **ElecRoc 5 Client.pkg** through a network sharing instead of an install DVD, we recommend you to copy this file to your local computer before you run it to start the installation.*

2. Double-click to run the install program. The program first displays the welcome window.



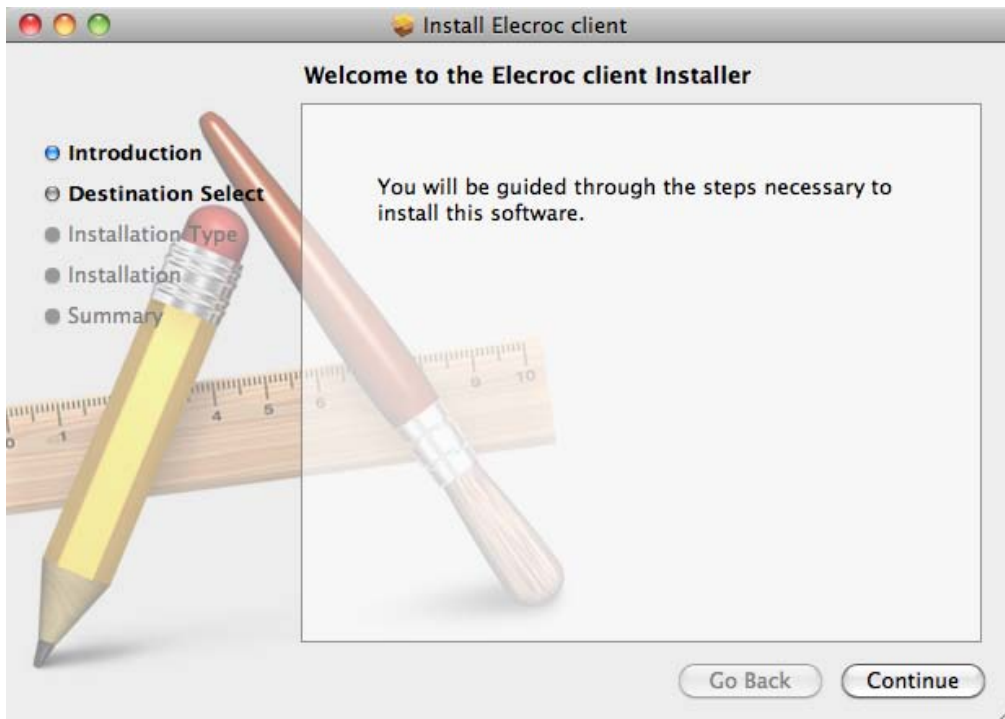


Figure 42

3. Click **Continue**. The **Destination Select** dialog appears. Select the destination folder and click **Continue**.

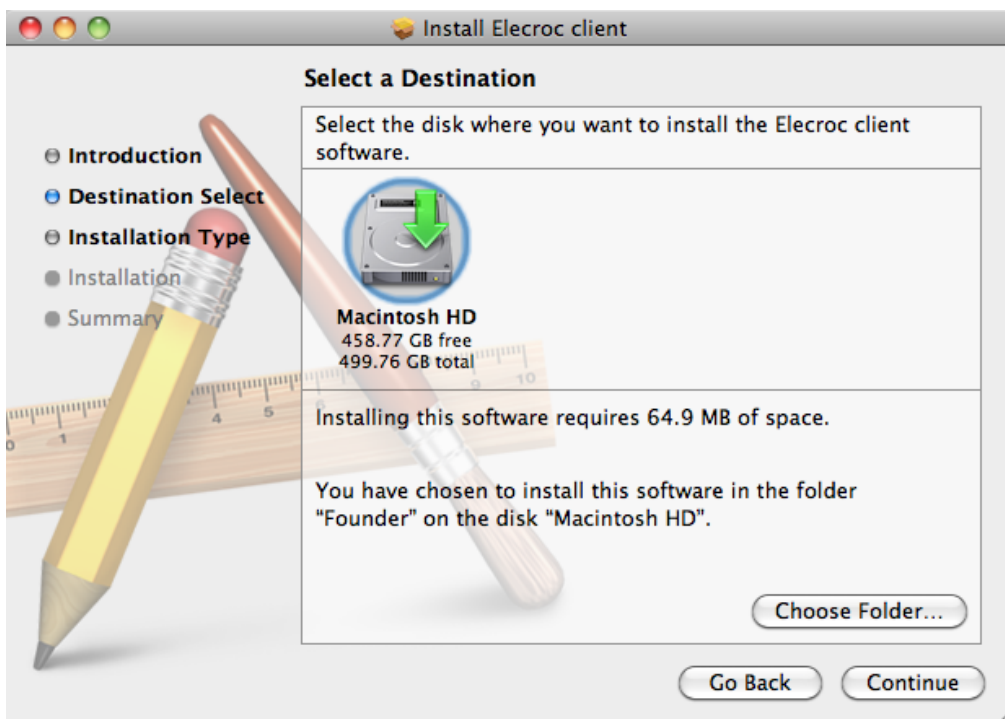


Figure 43

4. The **Installation Type** dialog will be displayed. Click **Install** to begin the installation.

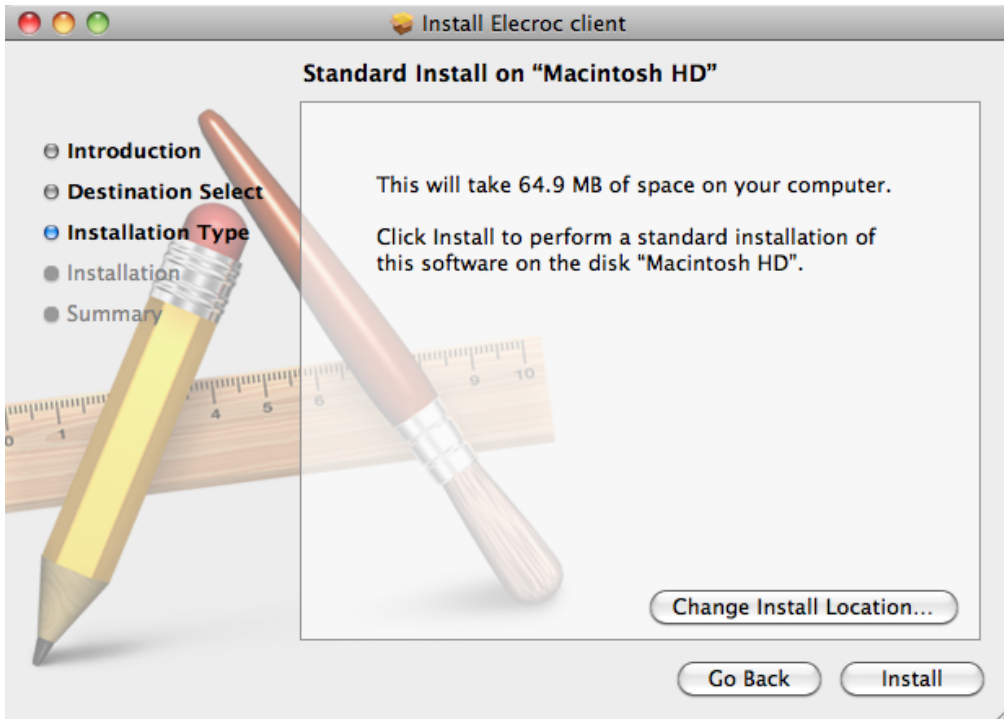


Figure 44

5. A dialog box may appear and ask you to provide an operating system administrative user and password (if any).

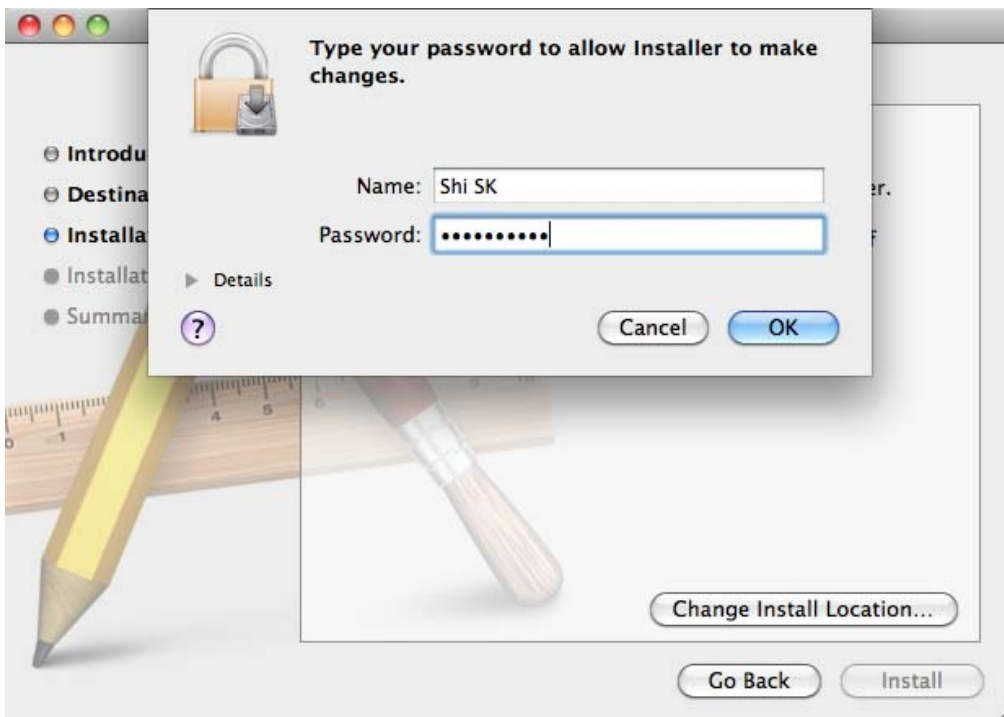


Figure 45

6. The **Installation** window appears, showing the install progress with a bar.

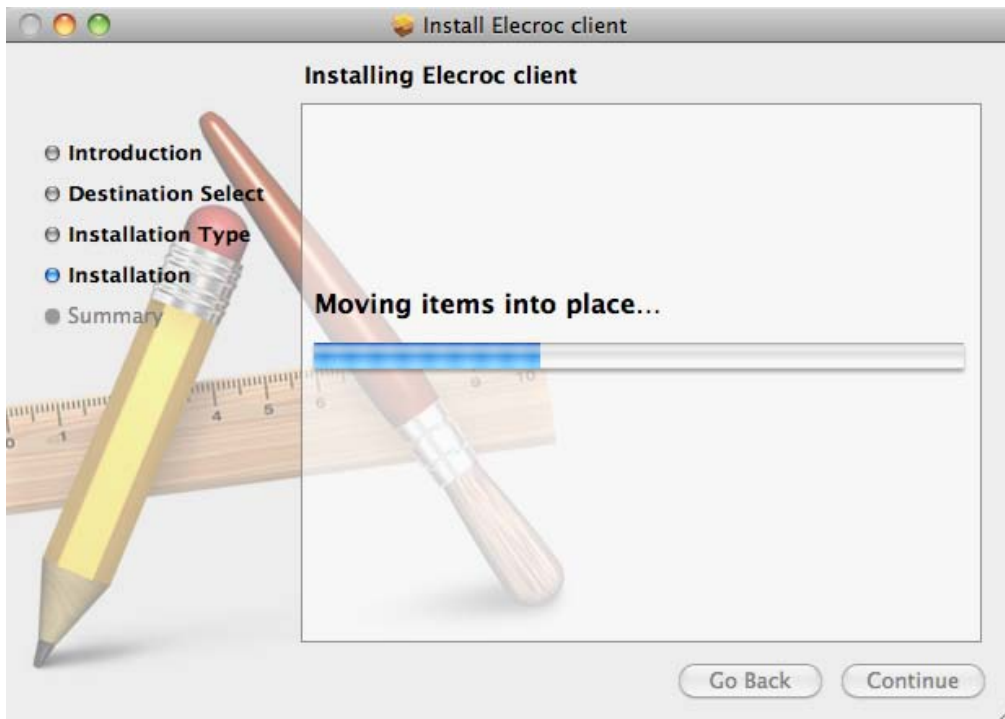


Figure 46

7. When the progress bar reaches 100%, the following dialog shows that the installation was successful. Click **Close** to complete.

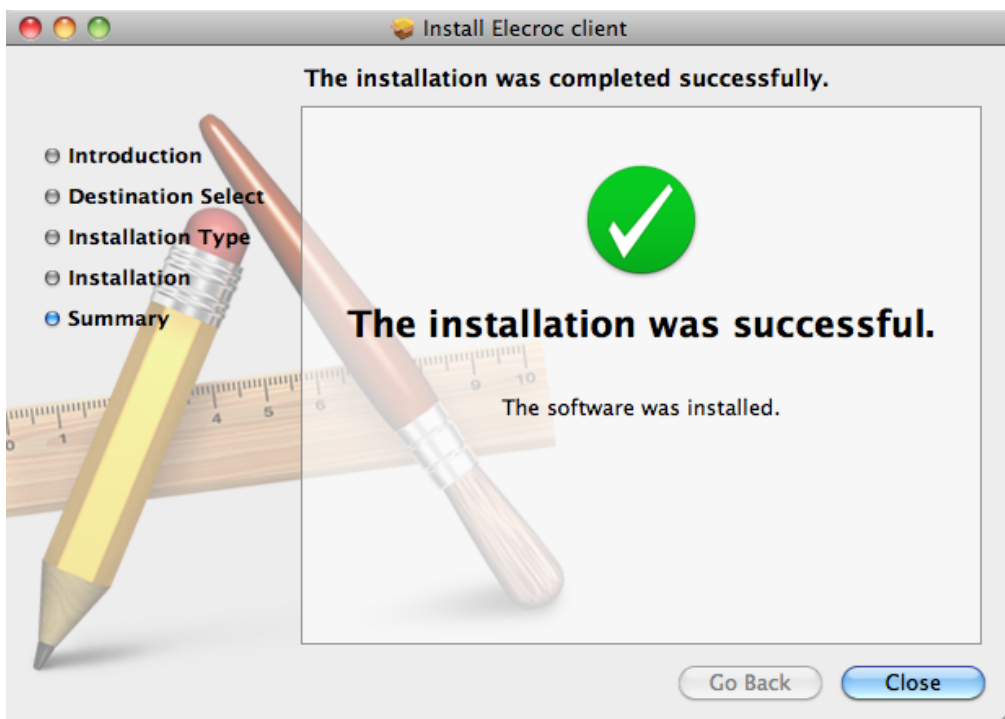


Figure 47

### 3.4 Remote Processors

We've mentioned the installation of remote processors in section 3.1 ([click here](#)). This section is a supplement about some restrictions and notices that you should note before the installation.

Remote processor is such processor that is NOT installed locally on the computer where you have installed the ElecRoc Server, but on another computer remotely-connected in your LAN. The computer for installing the remote processor is also called slave server, while that for installing the ElecRoc Server is called master server.

Prior to the installation of the remote processors, you need to note or ensure that:

1. ElecRoc processors, including remote ones, are installed & used by license, please check over the license (on the Server, choose menu **Help > ElecRoc 5 Dongle Information**), ensure that the total number of the processors *installed* and *to be installed* on the master and slave servers is no more than the number licensed.
2. The master and slave servers must be in same domain, and be accessed each other.
3. Turn off Windows Firewall on both the master and slave servers.

If you are using other firewall, please add or allow the following exceptions:

\Elecroc\bin\Coordinator\Coordinator.exe  
\CommonTools\bin\RemoteProxy.exe  
C:\Program Files\Common Files\Founder\ComHost\COMHostRun.exe  
the dongle's Elite4 Net Service  
ports (including Port80, Port135, Port8000, and Port8100)

If you have to turn on the firewall after the installation, please run the file WinFirewallTool.exe under the install DVD directory \Tools\Windows Firewall Tool\, on both the master and slave servers.

4. Turn off UAC on both the servers in case that the operating system for one or both of the master and slave servers is Windows Server 2008 or Windows 7, and besides, run a program named **RemoteConfig** to make certain configuration to your system (please contact Founder's representative for this program, or as mentioned in the below, you can manually make this configuration).

The **RemoteConfig** program (double-click the file **setup.exe** in the package to run it) is a install program. Its installation itself can make certain configuration to your system. Please follow the instructions to install. Note that when you enter into the step as shown in the following figure, please choose **Server** if your system is the master server, and choose **Remote** if your system is the slave server. And as to the destination, please accept the default suggestion.

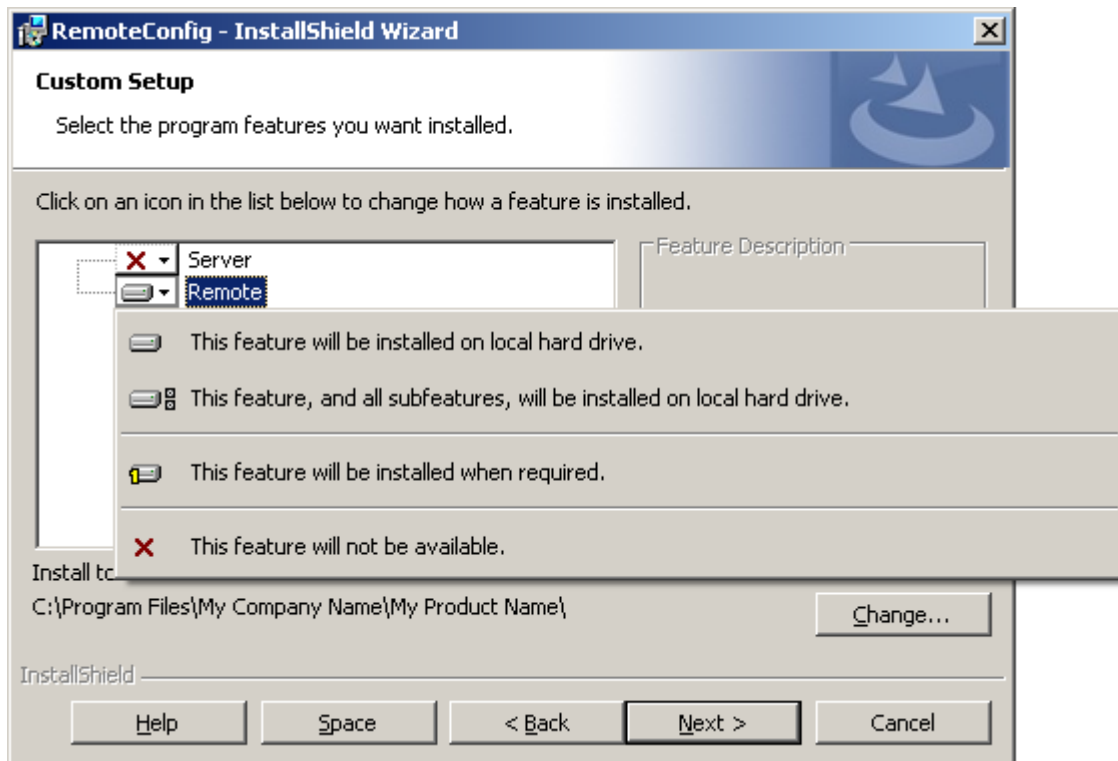


Figure 48

You can also manually make the configuration.

On the **master** server (Windows Server 2008):

- 1) Choose **Start > Run**, type **dcomcnfg**; and then click **OK**;

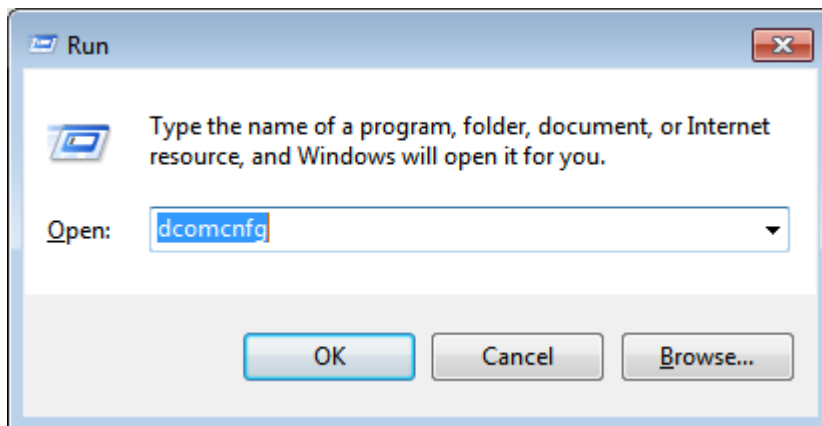


Figure 49

- 2) In the pop-up dialog box, choose **Console Root > Component Services > Computers > My Computer > DCOM Config**;

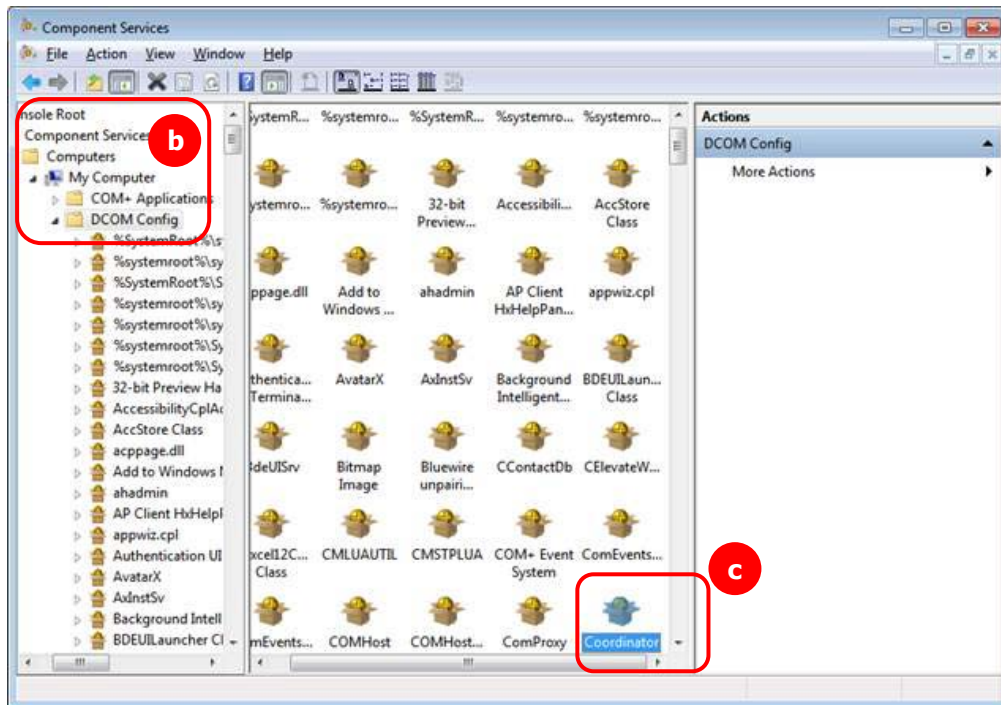


Figure 50

- 3) Find out the file **Coordinator**, right-click and choose **Properties**;
- 4) Under the **Identity** tab, check **The interactive user**.



Figure 51

On the **slave** server (Windows Server 2008 or Windows 7):

- 5) Choose *Start > Run*, type *dcomcnfg*; and then click *OK*;

- 6) In the pop-up dialog box, choose *Console Root > Component Services > Computers > My Computer > DCOM Config*;
- 7) Find out the file **COMHostRun**, right-click and choose *Properties*;
- 8) Under the *Identity* tab, check **This user**, type in the **User** and **Password**, and then click **OK**. The user must be one of the administrators in the server system.

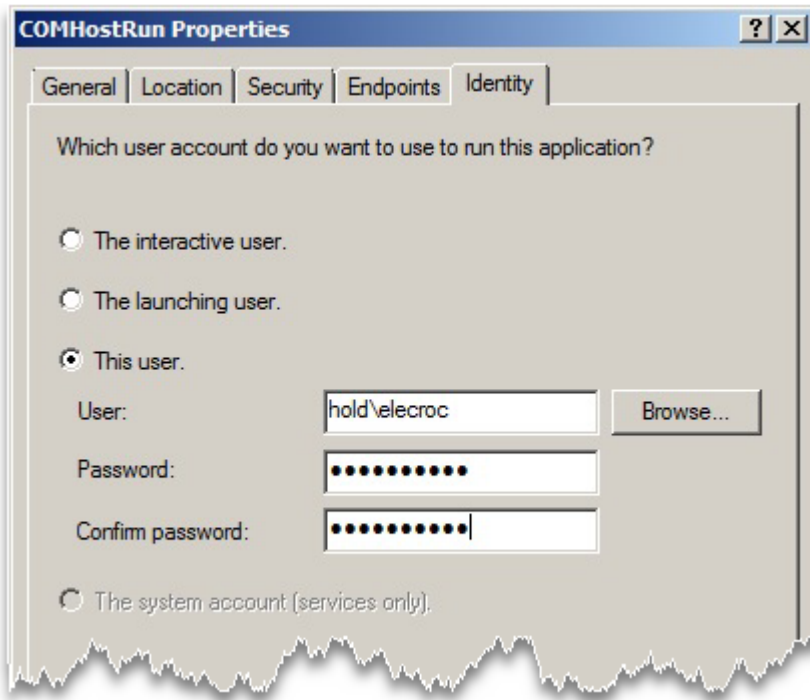


Figure 52

- 9) Find out the file **RemoteProxy**, do the same as that for the file *COMHostRun*.

The remote processor cannot be installed if UAC on any of the two servers is turned on, unless the login user & password for the two servers are completely the same. You need to configure as follows in case that you have to turn on the UAC.

On the **master** server where UAC is turned on (Windows Server 2008):

- 1) Choose *Start > Run*, type *dcomcnfg*; and then click **OK**;
- 2) In the pop-up dialog box, choose *Console Root > Component Services > Computers > My Computer > DCOM Config*;
- 3) Find out the file **Coordinator**, right-click and choose *Properties*;
- 4) Under the *Identity* tab, check **This user**, type in the **User** and **Password**, and then click **OK**. The user must be one of the administrators in the server system.

On the **slave** server where UAC is turned on (Windows Server 2008 or Windows 7):

- 5) Choose *Start > Run*, type *dcomcnfg*; and then click **OK**;
- 6) In the pop-up dialog box, choose *Console Root > Component Services > Computers > My Computer > DCOM Config*;
- 7) Find out the file **COMHostRun**, right-click and choose *Properties*;
- 8) Under the *Identity* tab, check **This user**, type in the **User** and **Password**, and then click **OK**. The user must be one of the administrators in the server system.



9) Find out the file **RemoteProxy**, do the same as that for the file *COMHostRun*.

**Note:** The users configured for the master and slave servers may be different, but for the sake of easiness, you'd better use a same user.

## 3.5 Installation Tools

We also provide some small tools that may be useful in your ElecRoc's installation. Please contact Founder's sales representative if you want to use them.

You need no installation for these tools, since they are provided simply as a series of files. Double-click the file **ElecRoc Tool.exe** to start them.

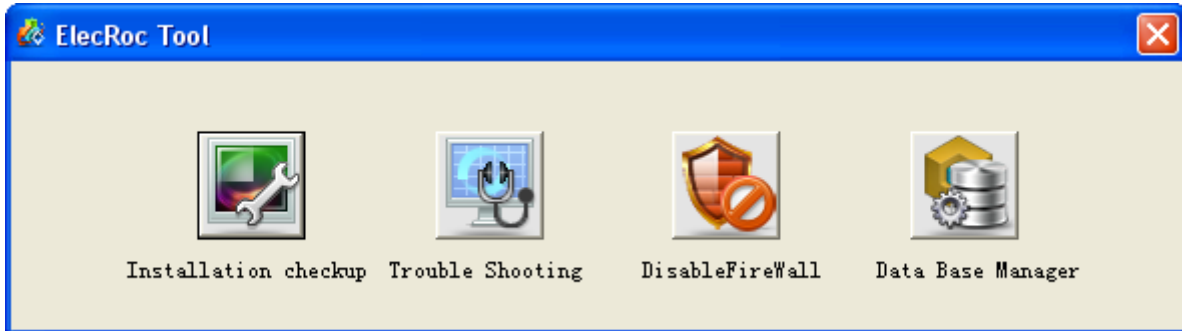


Figure 53

As shown in the above figure, there are four tools.

### 1. Install Checkup

This tool is used for you to perform a pre-installation checkup, so as to check if your computer environment is suitable for installing ElecRoc Server and/or processors. It's recommended prior to the installation.

Once started, it pops up a dialog box showing the checking progress. And then when the checkup is completed, it displays the result. You'd better add the components or software into your system as the result suggests, if any.

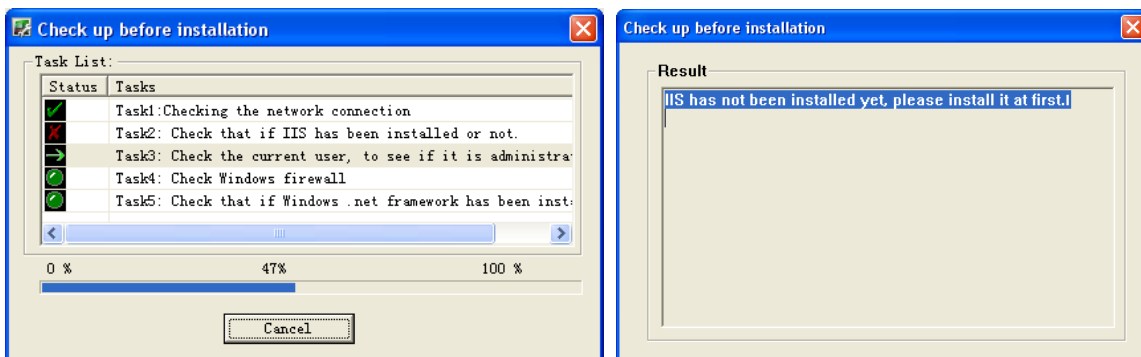


Figure 54

### 2. Trouble Shooting

This tool is used for you to diagnose and repair your server's system configuration.

There is a checklist at the left of the window, items of which can be added or removed by clicking the **Setting** button. Please check over these items in the checklist before the diagnosis and repairing.



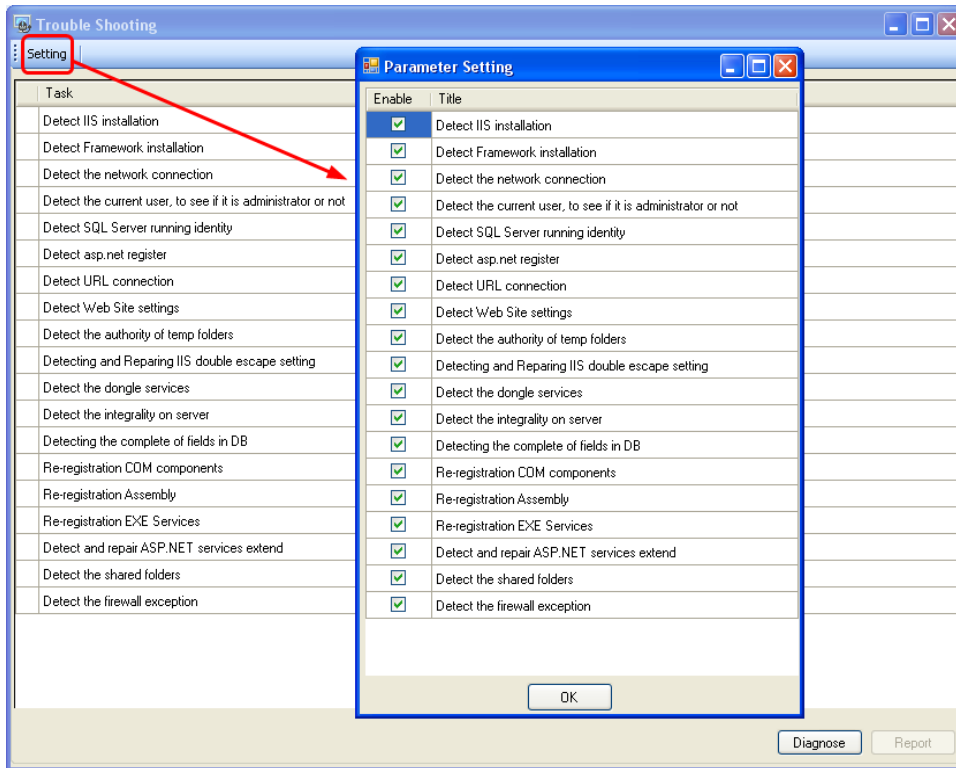


Figure 55

Click **Diagnose** to start the diagnosis and repairing. It diagnoses your system configuration item by item, showing the exceptions in red, if any, and meanwhile, repairing automatically part of the exceptions or absent configurations.

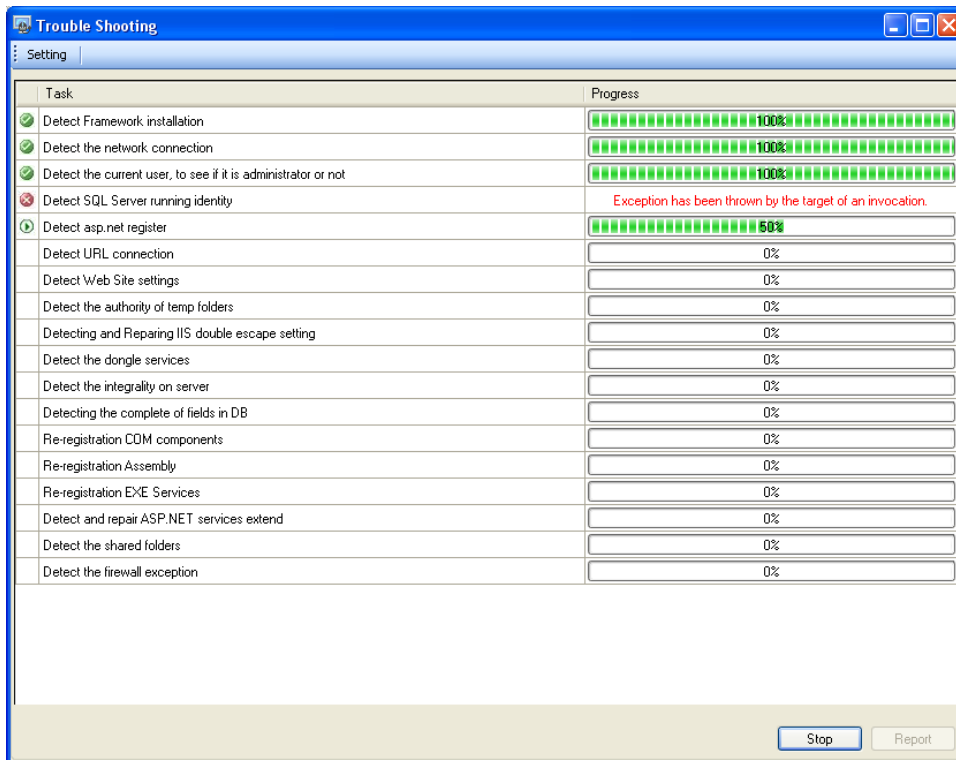


Figure 56

After the diagnosis, you can click **Report** to generate a report file log.txt, or you can click **Start** to diagnose once again in case that you have made some modifications after the first diagnosis.

### 3. Disable Firewall

This tool is used for disabling your Windows Firewall.

For Windows 7 and Windows Server 2008, the user to run this tool must be member of the Administrators, and you need to run this tool on your local disk.

There is no window or dialog box when this tool is running. Its progress and result are shown as clues above the right-end of your Taskbar.

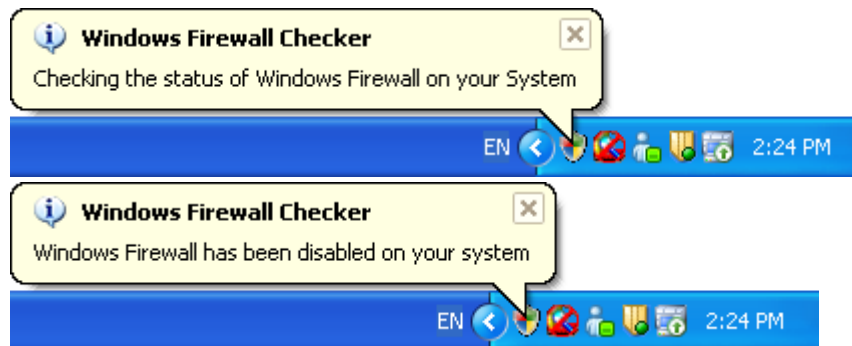


Figure 57

### 4. Data Base Manager

The tool is used for you to backup and restore your ElecRoc database. You need to run this tool on ElecRoc server. And for Windows Server 2008, the user to run this tool must be member of the Administrators.

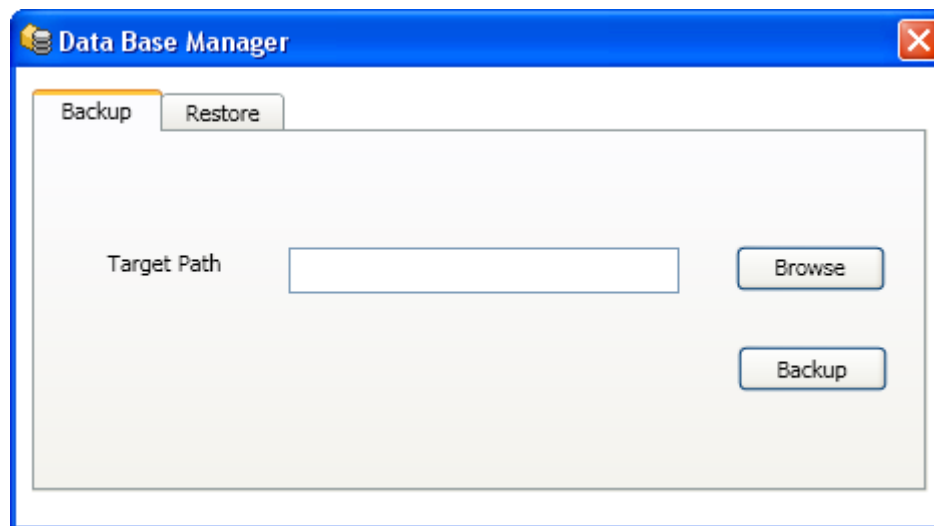


Figure 58

As to the backup, please specify the path for storing your database under the **Backup** tab, and then click **Backup**. And as to the restoring, please specify the path where you stored the database during the backup operation, under the **Restore** tab, and then click **Restore**.