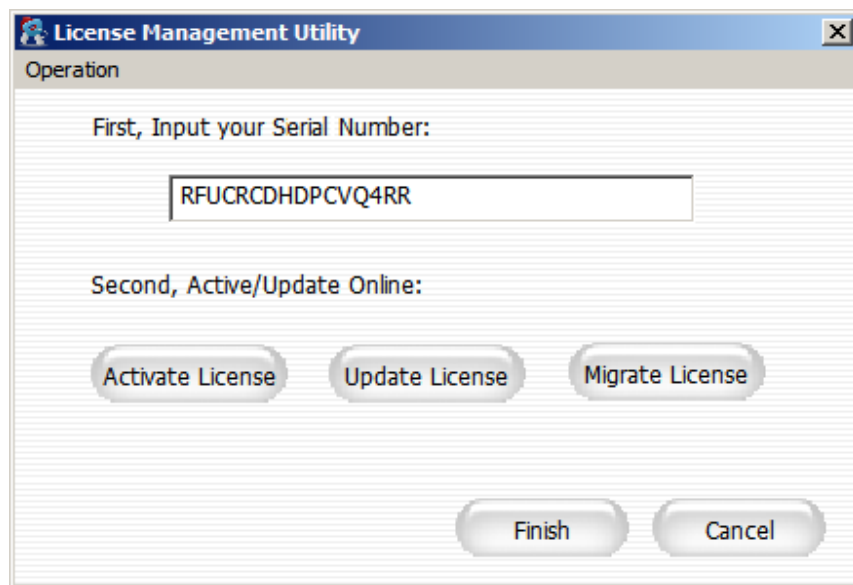


# How to authorize ElecRoc 6?

---

1. Check email and receive a Serial Number (SN);
2. Install ElecRoc server according to the guide.
3. Input the SN when the License Management Utility tool appears, and click Activate License.



If the server is connecting to internet, select Online, and then click Activate.

**License Activation**

Online activation

☒ Online

The online activation may take 20 seconds, please be patient.

Serial Number:

Offline activation

☐ Offline

1. Input the SN to create a request file

Serial Number:

2. Please visit the following web size and log on using the SN, then input the request file to get an authorization file

<http://user.bitanswer.com/en/logon>

3. Import the authorization file

4. If the server locates in the local area network (LAN), setup the proxy at first from Operation\Configuration\Proxy Server;

**Configuration**

Proxy Server

☒ Enable Proxy Server

Address:  Port:

User:  Password:

Local Server IP:

☐ Use a specific IPv4 address if your server computer has more than one IPv4 address and the default one is not you want to use

IP Address:  Port:

If the server doesn't connect to internet or intranet, please select Offline activation, and then refer to the GUI to activate the ElecRoc.

The image shows a 'License Activation' dialog box with a blue title bar. It contains two sections: 'Online activation' and 'Offline activation'. In the 'Online activation' section, the 'Online' radio button is selected, and there is a text input field for the 'Serial Number' containing 'RFUCRCDHPCVQ4RR' and an 'Activate' button. In the 'Offline activation' section, the 'Offline' radio button is selected. It contains three numbered steps: 1. 'Input the SN to create a request file' with an 'Export' button; 2. 'Please visit the following web site and log on using the SN, then input the request file to get an authorization file' with a 'Visit Site' button and the URL 'http://user.bitanswer.com/en/logon'; 3. 'Import the authorization file' with an 'Import' button. A 'Finish' button is located at the bottom right of the dialog.

**License Activation**

Online activation

☐ Online

The online activation may take 20 seconds, please be patient.

Serial Number: RFUCRCDHPCVQ4RR **Activate**

Offline activation

☒ Offline

1. Input the SN to create a request file

Serial Number: RFUCRCDHPCVQ4RR **Export**

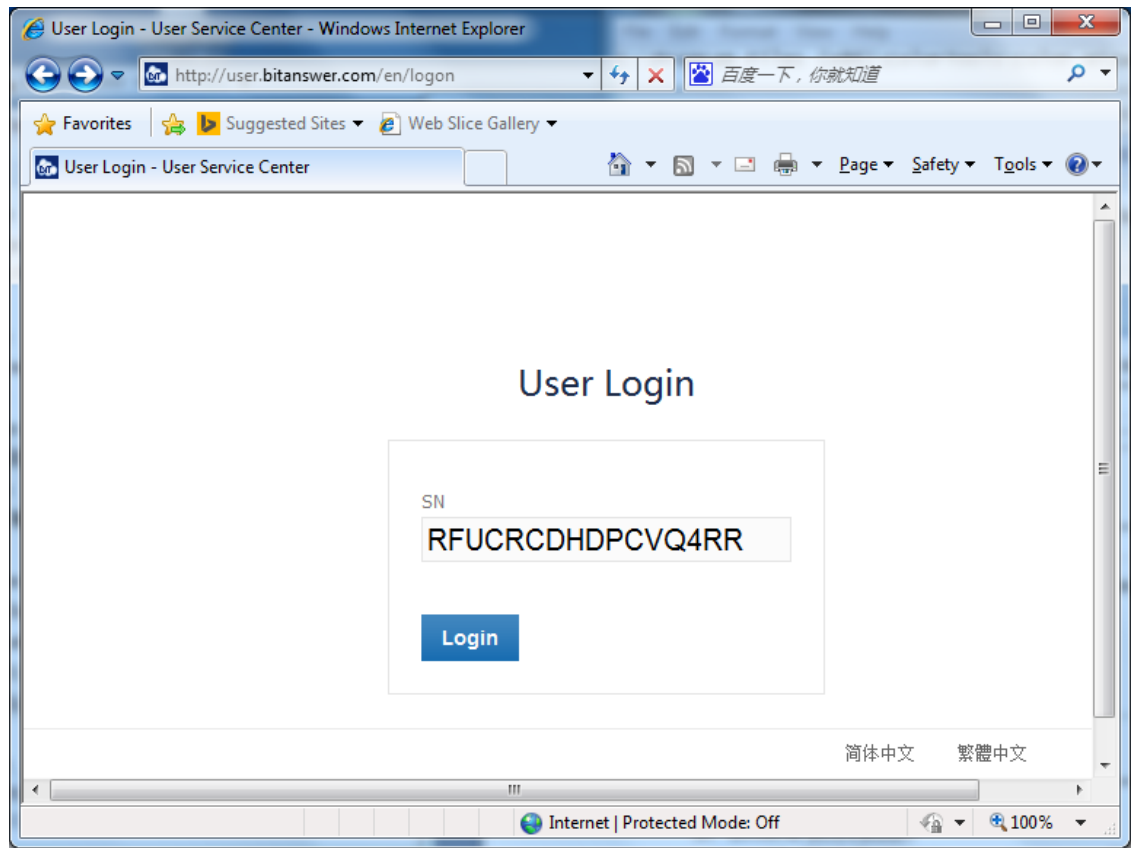
2. Please visit the following web site and log on using the SN, then input the request file to get an authorization file

<http://user.bitanswer.com/en/logon> **Visit Site**

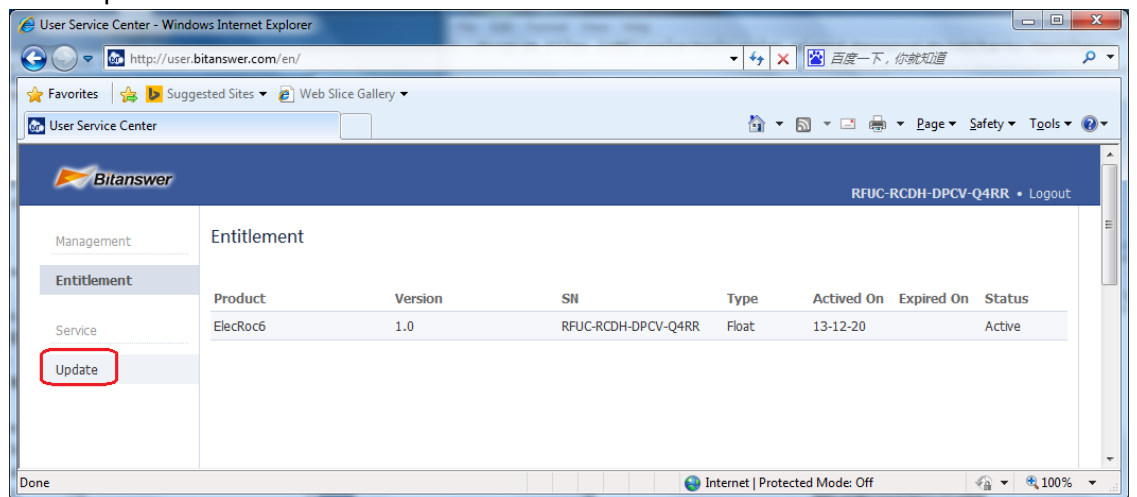
3. Import the authorization file **Import**

**Finish**

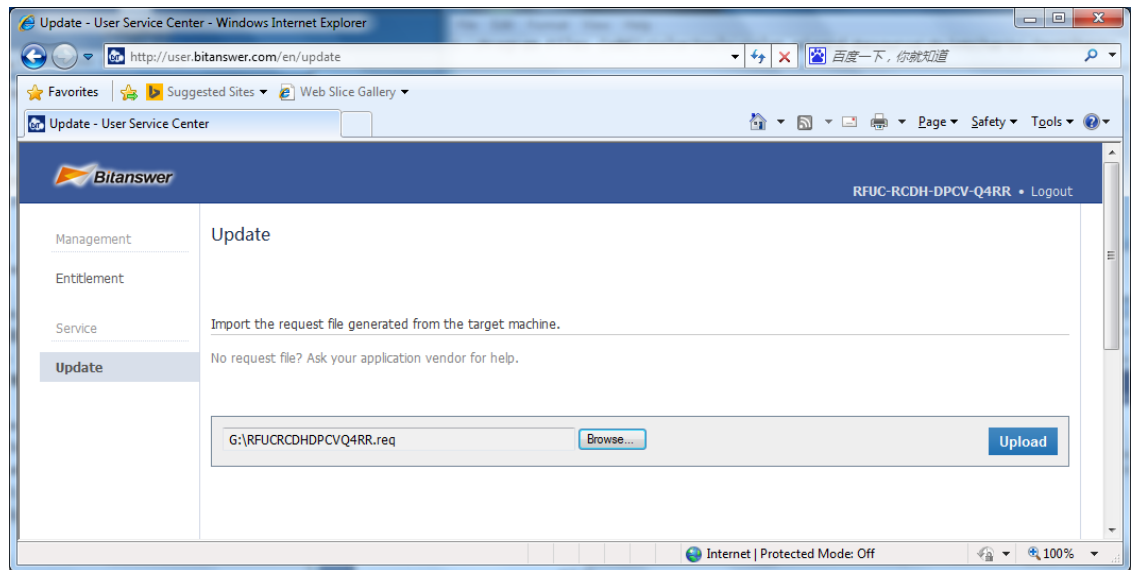
5. Offline activation
  - 1) Click Export to create a .reg file.
  - 2) Run <http://user.bitanswer.com/en/logon> on another computer, input the serial number



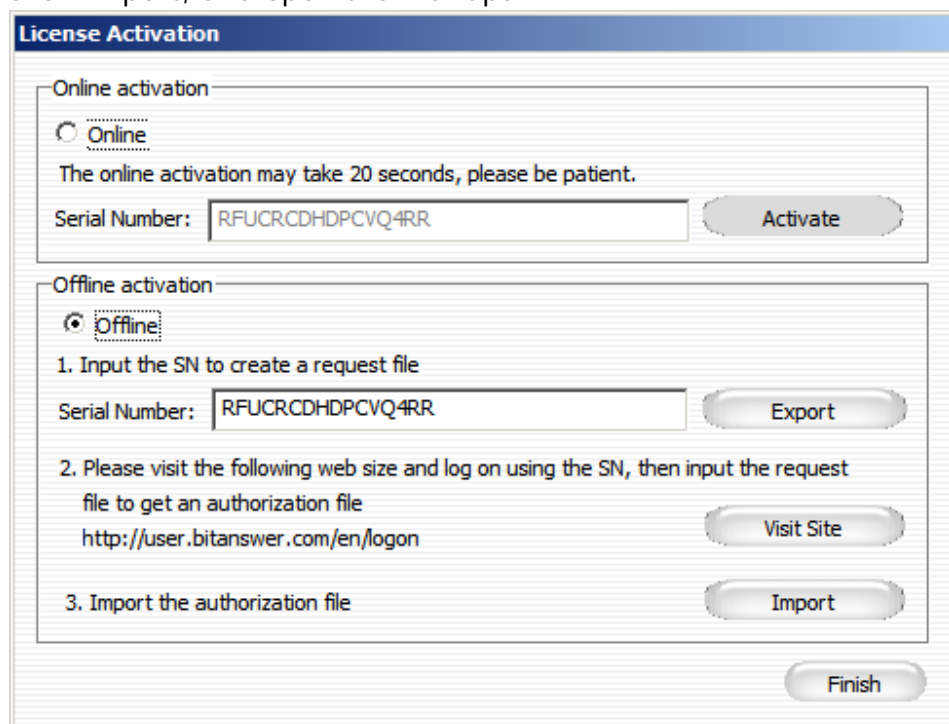
- 3) Click Login
- 4) Click Update



- 5) Input the .reg from Browse..., then click Upload.



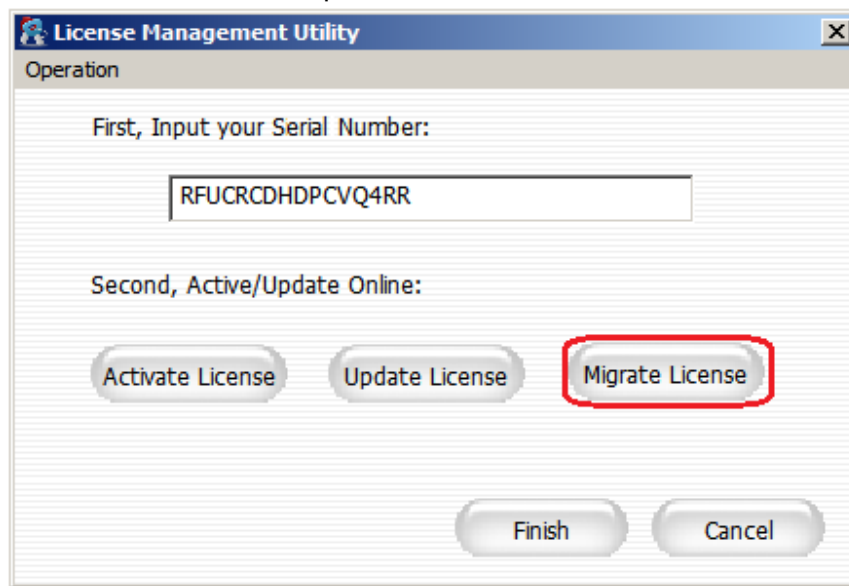
- 6) Click Download, and save a file .upd
- 7) Click Import, and open the file .upd.



6. Click Finish.

Note:

7. Activate License is only used for the first time installation of ElecRoc server, to active the program. If you need to add processors or expand time, please click Update License.
8. One SN is only used on one computer, so please click **Migrate License** to release the SN in order to active the program on another computer. Click Migrate License, and wait about half an hour, then install on another computer.



9. If the computer of ElecRoc server was broken, please tell us the serial number, Founder will process it, then you can use it on another computer, it is not free. Remember: the serial number will NEVER be used on the broken computer any more.
10. So keep the serial number safety, at any time, you need to know the serial number.