



# ElecRoc 5

## *An Integrated JDF/PDF Pre-press Workflow Solution*

- Native transparency PDF engine
- Powerful zone and transparency trapping
- Navigator preflight
- PDF-based EcoInk (ink saving)
- Flash animated 3D booklet preview
- Versatile imposition and ganging
- Advanced screening

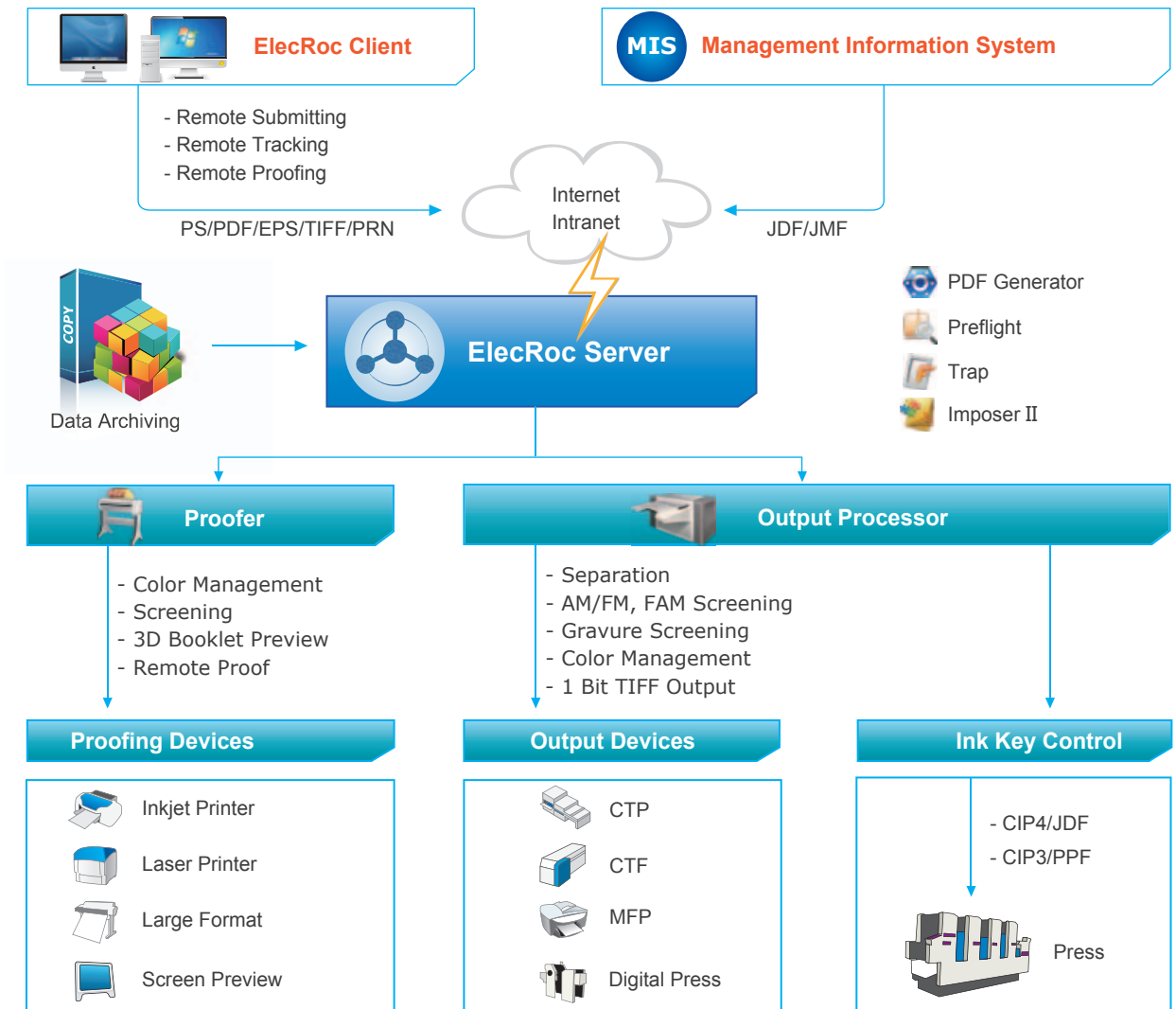




## ElecRoc 5 An Integrated JDF/PDF Pre-press Workflow Solution

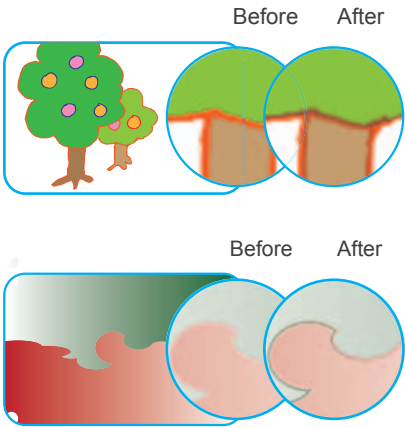
### ElecRoc 5 at a Glance

ElecRoc 5 is a fully integrated JDF/PDF pre-press workflow with new system structure to achieve more stability and higher processing efficiency. It has many new modules and functions, a more user friendly interface, and it is easier to operate. Job processing is more secure and file management is easier and more convenient.



### Functions of ElecRoc 5

ElecRoc is an easy-to-use, scalable workflow solution designed to meet all the demands of pre-press professionals. It integrates the latest core technologies from Founder Electronics. ElecRoc provides all the functionality required for job management, integrated JDF/PDF creation, preflight, trapping, imposition, PDF color management, 3D preview, Ecolnk, Hi-Fi printing, PDF compare, cooperative task management, load balancing, zone screen, CIP4 ink control, advanced screening, color/screen proofing, remote proofing, and output device support. ElecRoc combines automation with process control of the entire workflow in real time.



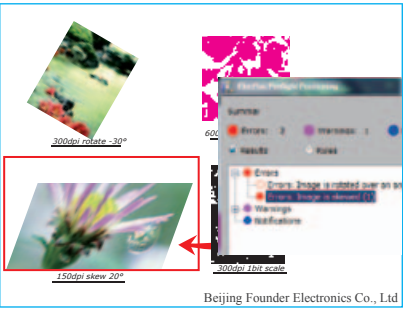
## Wise Trap

Founder trap is based on powerful parameter template settings. It supports trapping between graphics and images, including transparent images and bitmaps, along with spot colors, and generates smooth sliding traps between bidirectional gradients. It includes global trap and zone trapping. Global trap is commonly used for most jobs to achieve automatic production. Zone trapping is used to select parts of a job that require special trapping parameters.

Benefits:

- Global trap and zone trapping
- Internal image trapping
- Transparency trapping

## FOUNDER Preflight sample



## Navigator Preflight

ElecRoc 5 has a comprehensive PDF preflight module. Preflight template settings specify automatic or manual operation. Users can easily navigate to objects flagged by preflight results to check.

Benefits:

- Auto preflight with template
- Individual settings of preflight nodes
- Easily navigate to flagged objects
- Preflight results can be automatically sent to designated destinations



Simulation Diagram

## Advanced Screening

EagleFAM is based on the technology that utilizes 7.5° shifted angle screening in midtones and adopts FM screening in highlights and shadows. It overcomes the weaknesses and combines the advantages of both conventional AM and FM screening. It achieves stable quality by using AM screening in midtones, and eliminates rosettes and moiré patterns.

EagleFM: Based on green noise FM technology & Founder 2<sup>nd</sup> FM technology using variable dot size and variable spacing. Control the randomness of dots, ensuring smooth middle tones. Smooth transition of continuous tones, keeping details in overlapping colors. Light area and shadow areas can use different dot sizes for ease of use on press and expanding the color gamut.

Benefits:

- High quality printing for high-end users
- Smoother tones and better details in final printed results



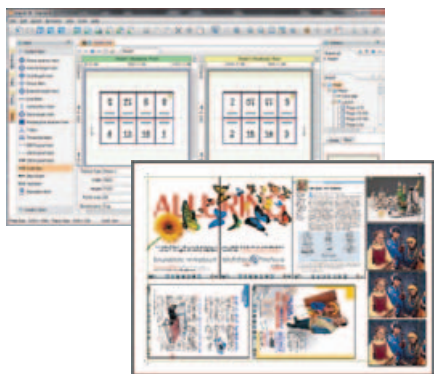
## 3D Booklet Preview

3D Booklet Preview displays a flash animation of page turning in reader's spreads. Proofing with 3D Booklet Preview shows the final effect of paginated jobs more accurately.

Benefits:

- Intuitive flash results
- Saves time and money

## Imposition and Versatile Ganging

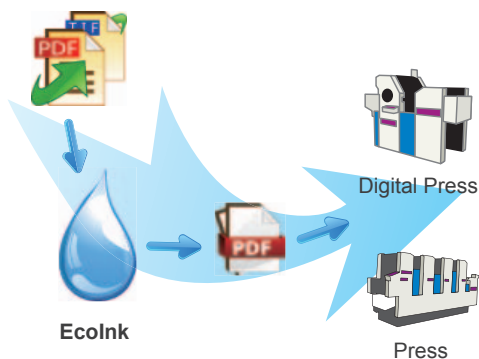


ElecRoc's Imposition Processor allows users to apply imposition signature templates to CTP jobs. Users can configure binding type, creep control, bleed control and page location control. Users can also see previews instantly and make last minute changes to their impositions. The final imposition is JDF based, thus increasing processing speed. The brand-new Ganging module provides powerful ganging functions to meet requirements of proofing, short-run printing and commercial printing. It supports double sided interactive ganging, auto ganging, auto bypass, step and repeat, automatic page numbering, auto marks, etc. The new ganging meets the requirements of the most complex binding types.

### Benefits:

- Origami folding to generate templates intuitively
- Sheetwise, Work and Turn, Work and Tumble, Perfector
- Step and repeat used for digital printing

## EcoInk

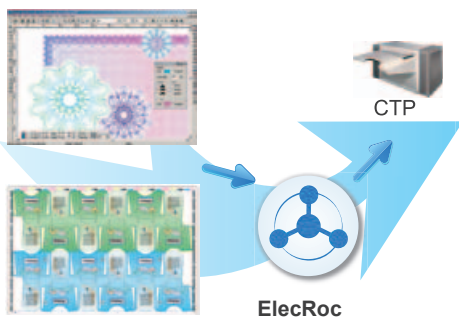


EcoInk (ink saving) is a built in color management module developed by Founder, it converts color accurately by loading open industry standard or the customer's ICC profile. Different ink saving parameters can be set up according to different press requirements and degrees of ink saving desired.

EcoInk controls RGB and CMYK images, graphics and spot colors. EcoInk can generate ink savings up to 20%.

### Benefits:

- Save on ink costs while achieving better color fidelity
- Green printing
- Lower carbon footprint



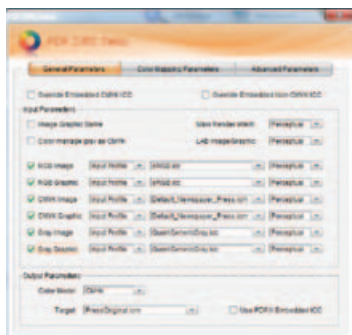
## Solution for Package Printing

ElecRoc's package printing solution includes Founder anti-counterfeit design software SuperLine and packing solution PaSharp. All the designs or signatures can be output to CTP effectively via ElecRoc 5.

### Benefits:

- Highly effective seamless output

## PDF CMS



The new PDF Color Management module is a PDF-level CMS. It is easy to achieve all sorts of color transformations with its powerful functions. Using PDF CMS, customers can do Hi-Fi printing, soft proofing on screen and it supports PDF based remote verification.

### Benefits:

- Flexible
- Convenient

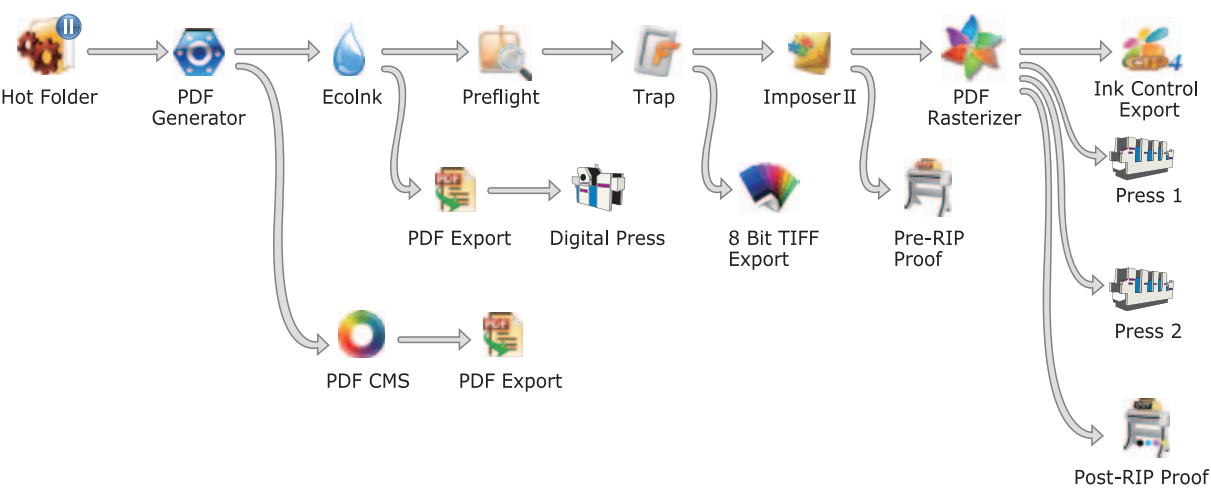
# Key Features

- Native transparency PDF engine
- Powerful zone and transparency trapping
- Navigator preflight
- PDF-based EcoInk (ink saving)
- Flash animated 3D booklet preview
- Versatile imposition and ganging
- Advanced screening
- Packaging solution
- Valuable PDF CMS
- Load balancing
- Free screening

And more:

- Converts bitmaps into PDF
- Remote proofing
- Proof on printing paper to save costs
- Smart job management
- Cooperative task managements
- Fast processes with customized configuration
- Reliable file backup system

# Typical Workflow



Recommended System Configuration

	Hardware	Software
Master Server	CPU: Intel Dual-Core Xeon 2.66GHz or above Memory: 4 Gigabyte or above Hard Disk: 120GB or above, high speed SCSI Display: 1024 x 768 Color, 32-bit true color	Windows Server 2003 SP2 Windows Server 2008 R2 64-bit SP1
Slave Server	CPU: Pentium IV 3.0 GHz or above Memory: 2 GB or above	Windows 2003 SP2 Windows Server 2008 R2 64-bit SP1
Mac Client	Power Mac G5 Memory: 2 GB or above Display: 1280 x 800	Mac OS X 10.5 Mac OS X 10.6 Java 1.5 and above
PC Client	CPU: Dual-Core 2.8 GHz or above Memory: 2 GB or above Display: 1024 x 768 Color, 32-bit true color	Windows XP SP3 Windows 2003 SP2 Windows 7 Windows 2008
Network	100MB Ethernet	



FOUNDER

Beijing Founder Electronics Co., Ltd.  
No.9, 5th Street, Shangdi Information Industry Base  
Haidian District, Beijing 100085, China

International Business Division  
Fax: +86 10 62981440  
Email: GASales@founder.com.cn

For more products, sales and technical support information,  
please visit our website at <http://www.founder.com.cn/en>