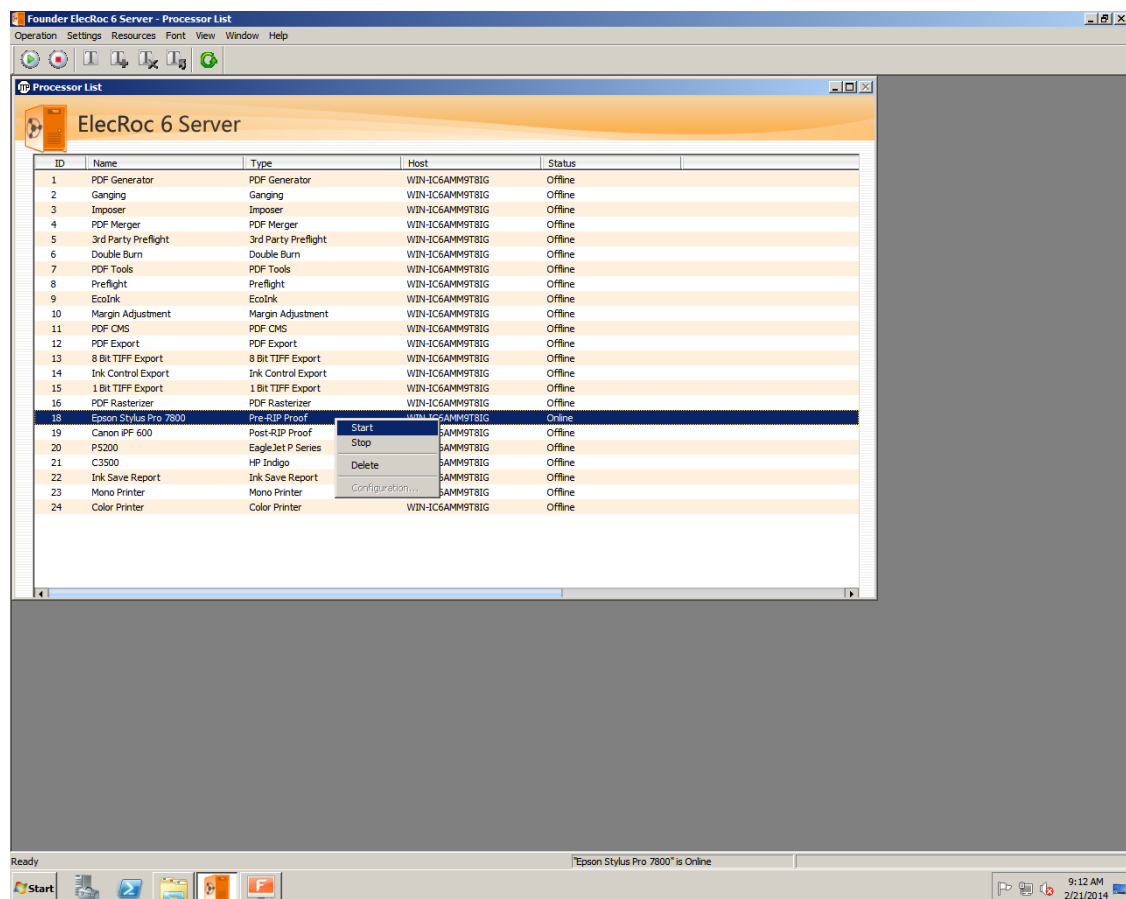


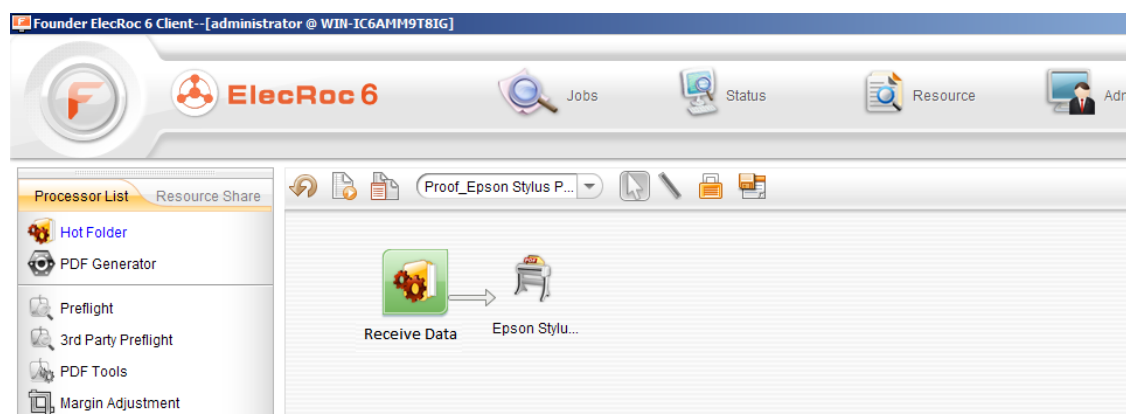
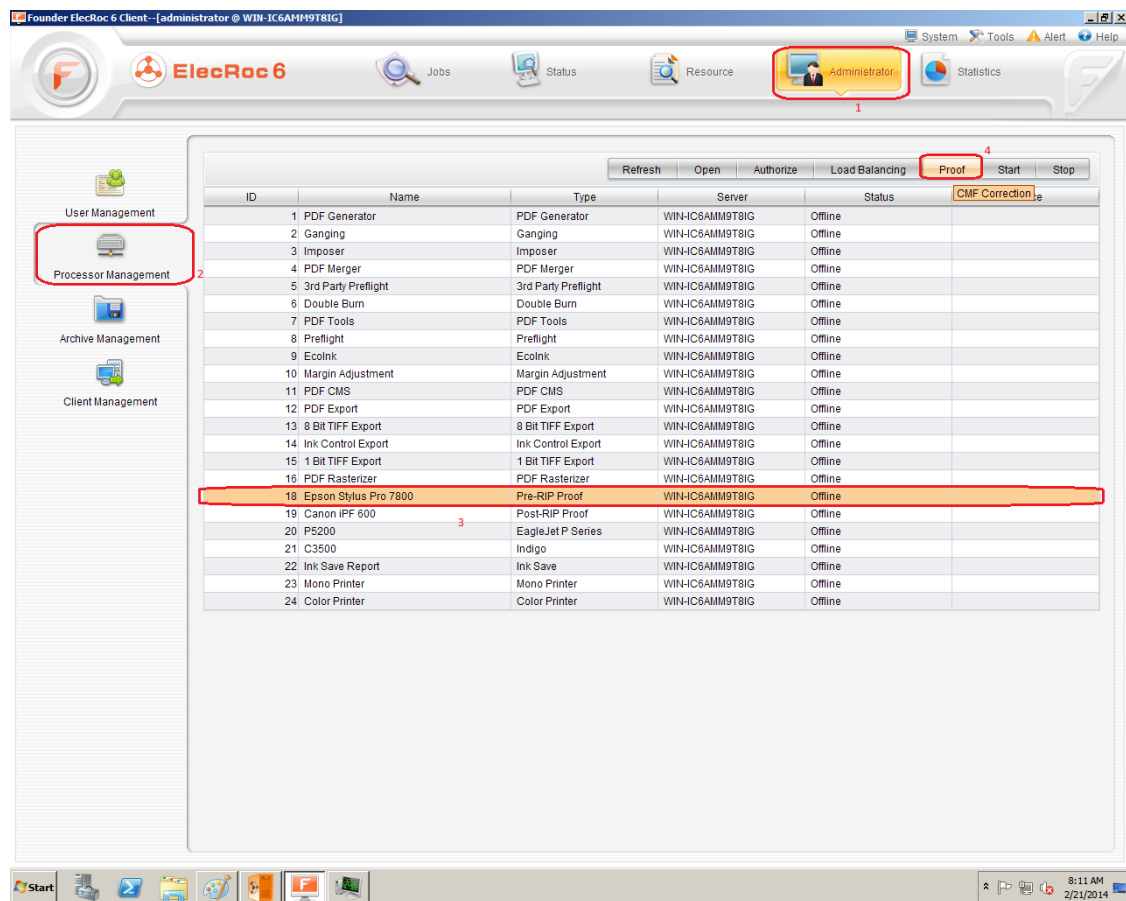
# How to create a new color solution?

1. Install the Windows driver of ink-jet printer on ElecRoc client computer, and make sure the printer is working smoothly.
2. Run *setup.exe* from installer DVD\Options\Color Tools\ to install color tools program on client computer, or click Install Color Tools after clicking autorun.exe from the program.
3. Run ElecRoc server and client, select proofing processor, right click, and then click Start, to make the processor Online, as following.

**Remind: The proofing processor must be ONLINE, otherwise the color calibration will never work.**



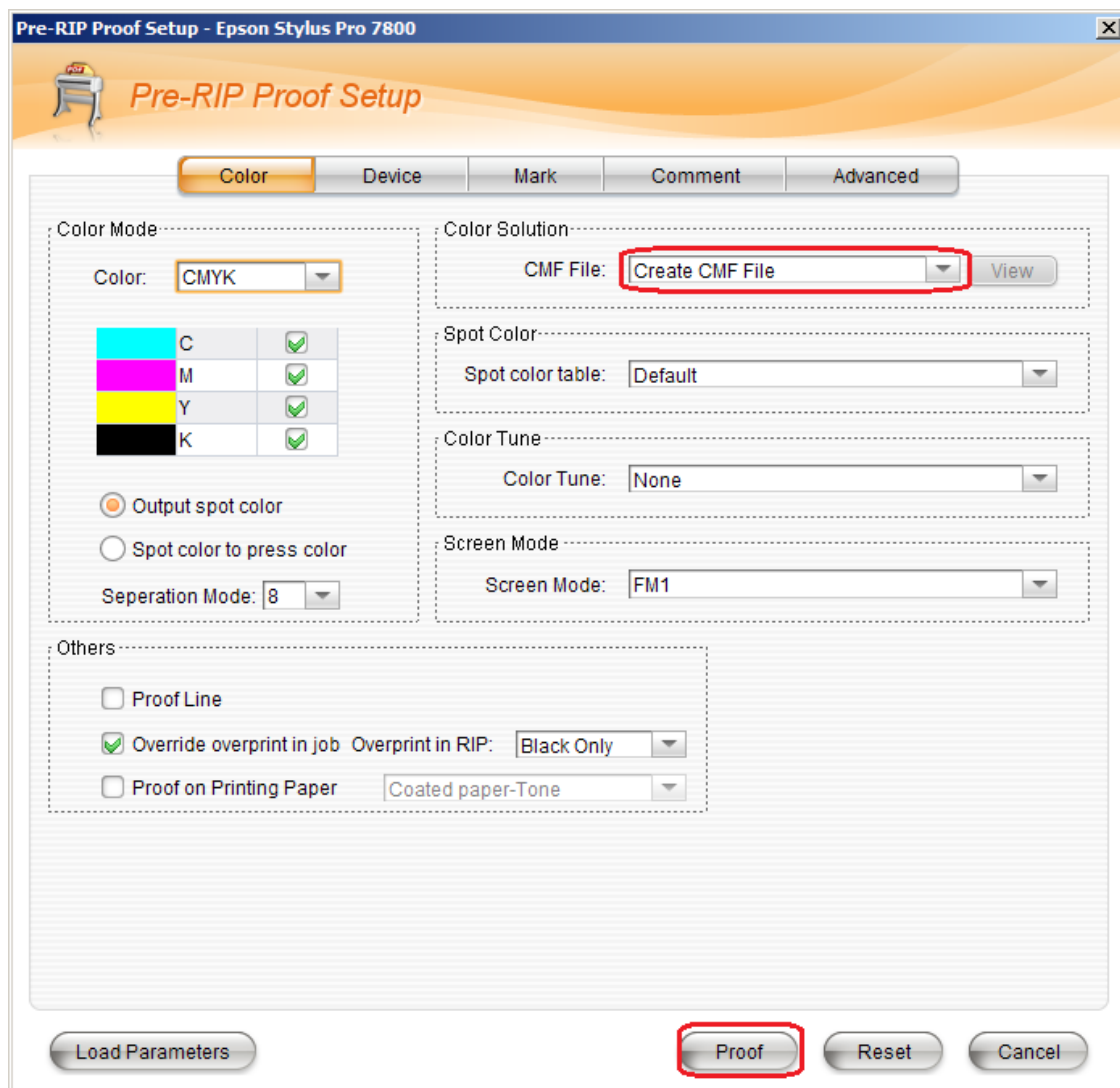
4. Select proof processor from client\Administrator\Processor Management, and then click Proof, as following. A new job ticket will be created, the ticket is only for making new color solution.



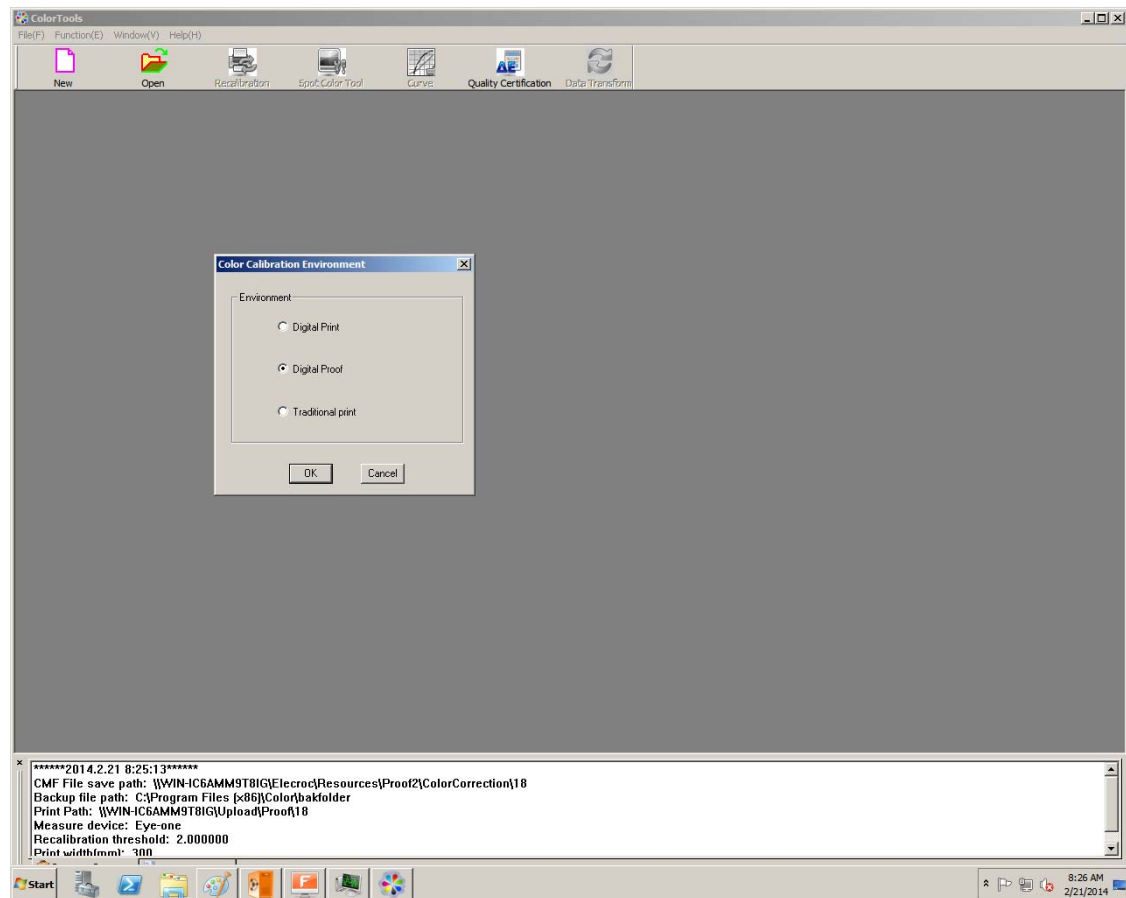
5. Double click the proofing processor, and set up the parameters, such as 1) the separation mode from Color\Color Mode; 2) select the

resolution from Device; 3) select auto cutting from Advanced; 4) select black ink type if necessary, etc.

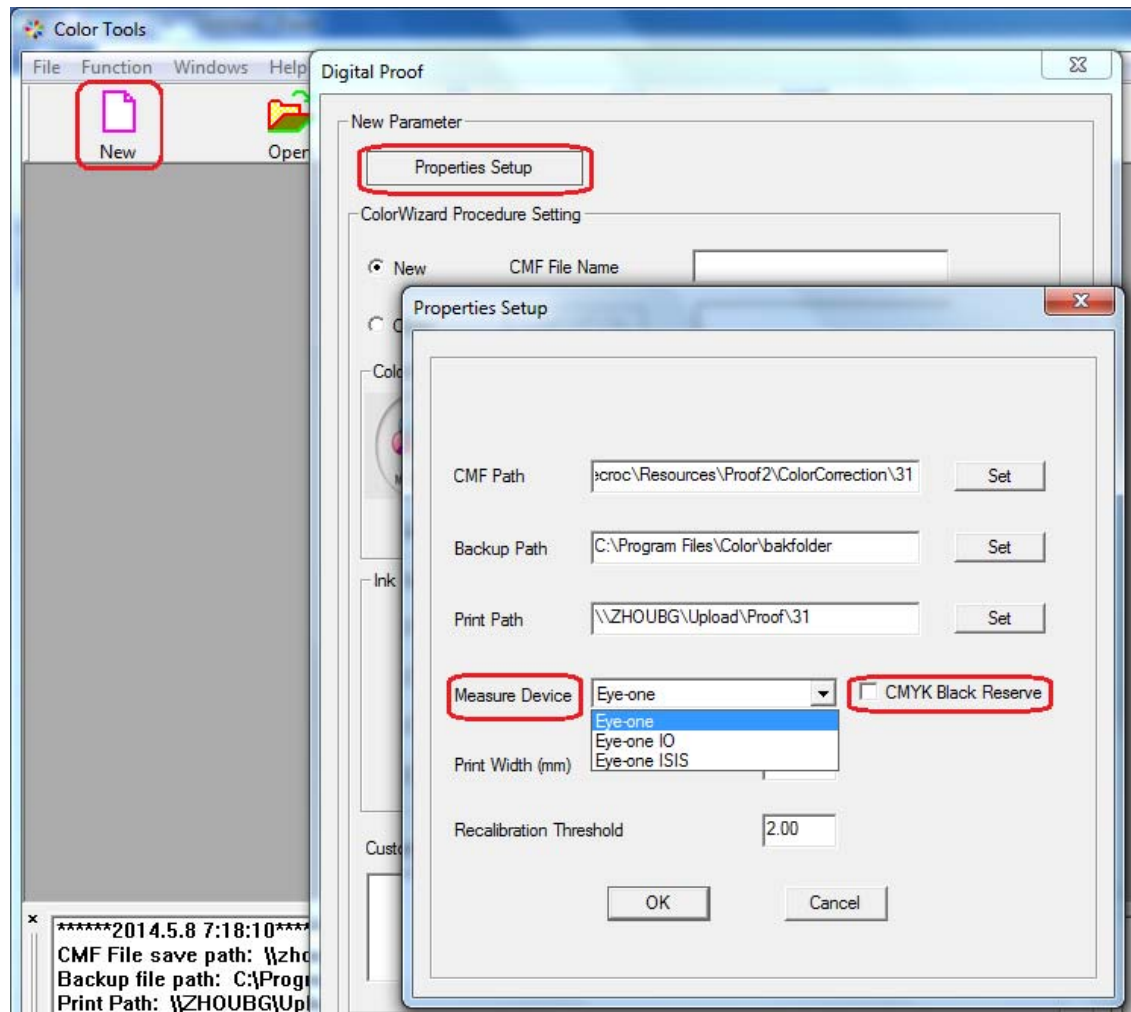
And then, click Proof, as following:



6. Color Tools will start, select Digital Proof, click OK.
7. The width of paper to make the color solution, is about 300mm, please prepare it, in order to save the paper.
8. We suggest use the paper, such as Semi-Matte Proof Paper, weight is about 190 g/m<sup>2</sup>.



9. Select the measure device which you will use it to make the new color solution, it is from New\Properties Setup\Measure Device. And please select if you want to reserve black or not when you output jobs with the color solution you will make.



10. Click New option to create a new color solution, and start the color wizard.

Note:

1. The color tools can install on ElecRoc server, or runs on any PC client computer, but doesn't support on Mac.