

How to install remote processor in ElecRoc 6 ?

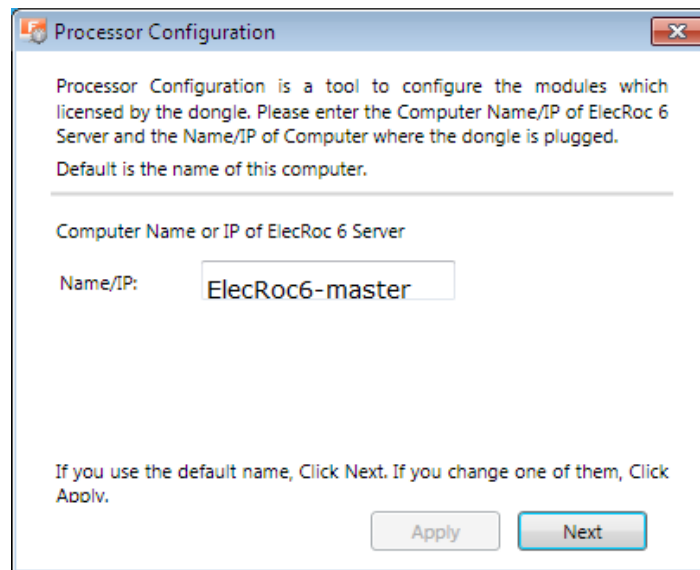
Remote processor is such processor that is NOT installed locally on the computer where you have installed the ElecRoc Server, but on another computer remotely-connected in your LAN. The computer for installing the remote processor is also called slave server, while that for installing the ElecRoc Server is called master server. When you run jobs with remote processor, the calculating is on the slave server, not on the master server. This is another distribute installation.

Please refer to the following steps to install remote processor:

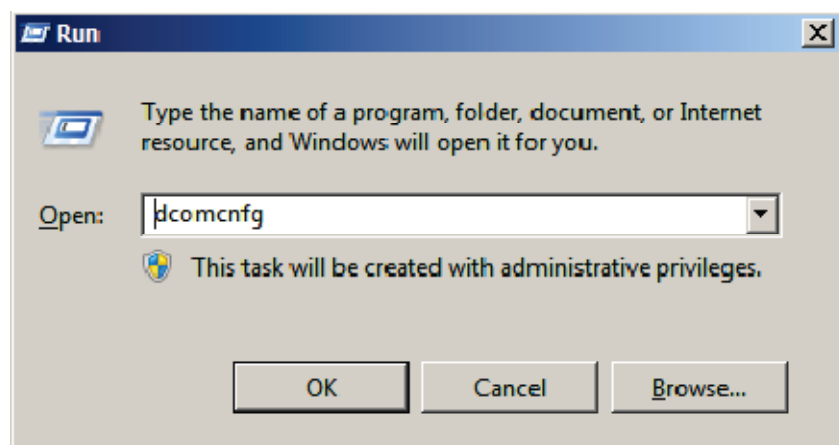
1. When install Windows operating system, remember both master and slave server, must be in same domain, such as WorkGroup; user name and password on two computer must be same too, such as:

Server	User name	Password	Computer name
Master server	ElecRoc6	Abcdef123	ElecRoc6-master
Slave server	ElecRoc6	Abcdef123	ElecRoc6-slave

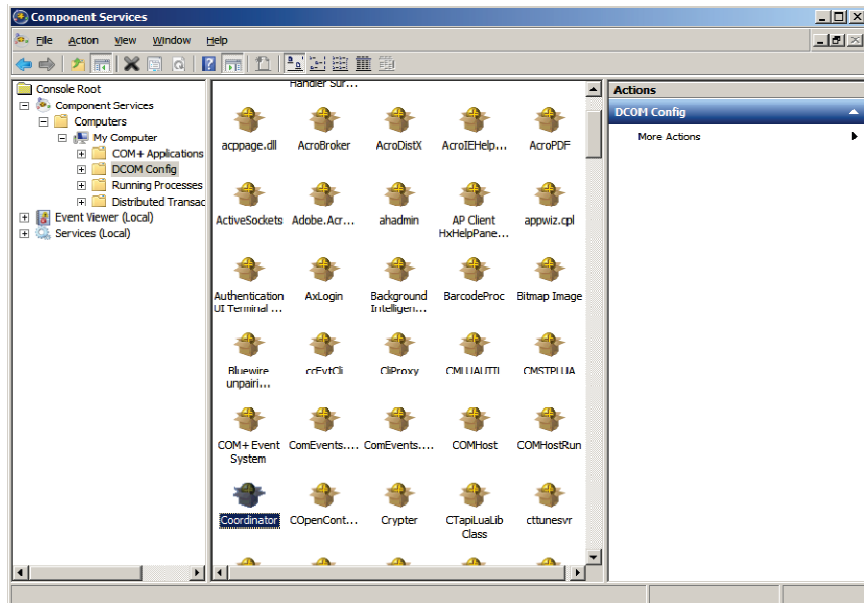
2. After installing Windows operating system from a fresh hard driver, please configure Internet Information Service (IIS) and .NET framework 3.5.1, close UAC and firewall **both on master and slave server** systems.
3. Install ElecRoc master server and slave server on two computers separately.
4. On slave installing, when configuration appears as following, type the master computer name, here is *ElecRoc6-master* in the box, click Apply, and then close the dialog box.



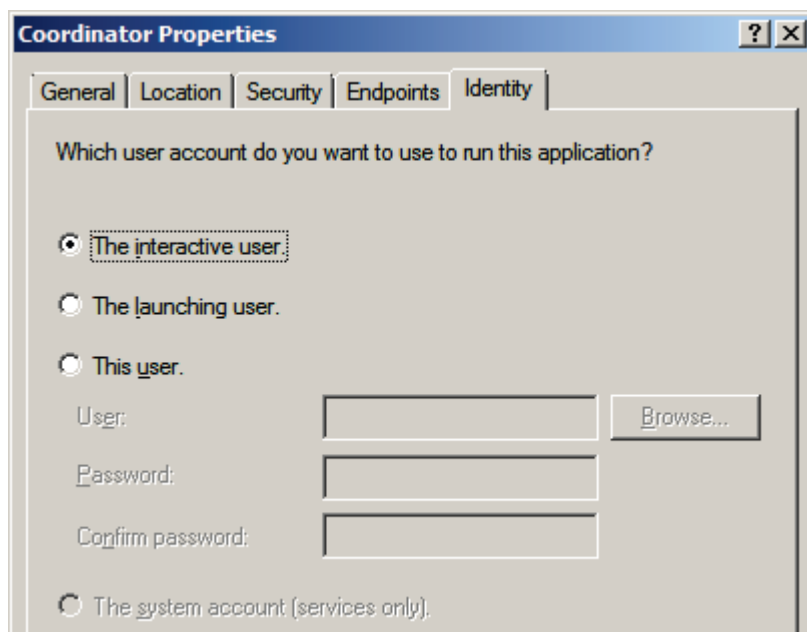
5. Open the file *BitAuthLic.ini* on slave server from \Founder\CommonTools\bin, change IP with the IP of master computer.
6. On the **master** server:
 - 1) Choose **Start > Run**, type **dcomcnfg**; and then click **OK**;



- 2) In the pop-up dialog box, choose **Console Root > Component Services > Computers > My Computer > DCOM Config**;

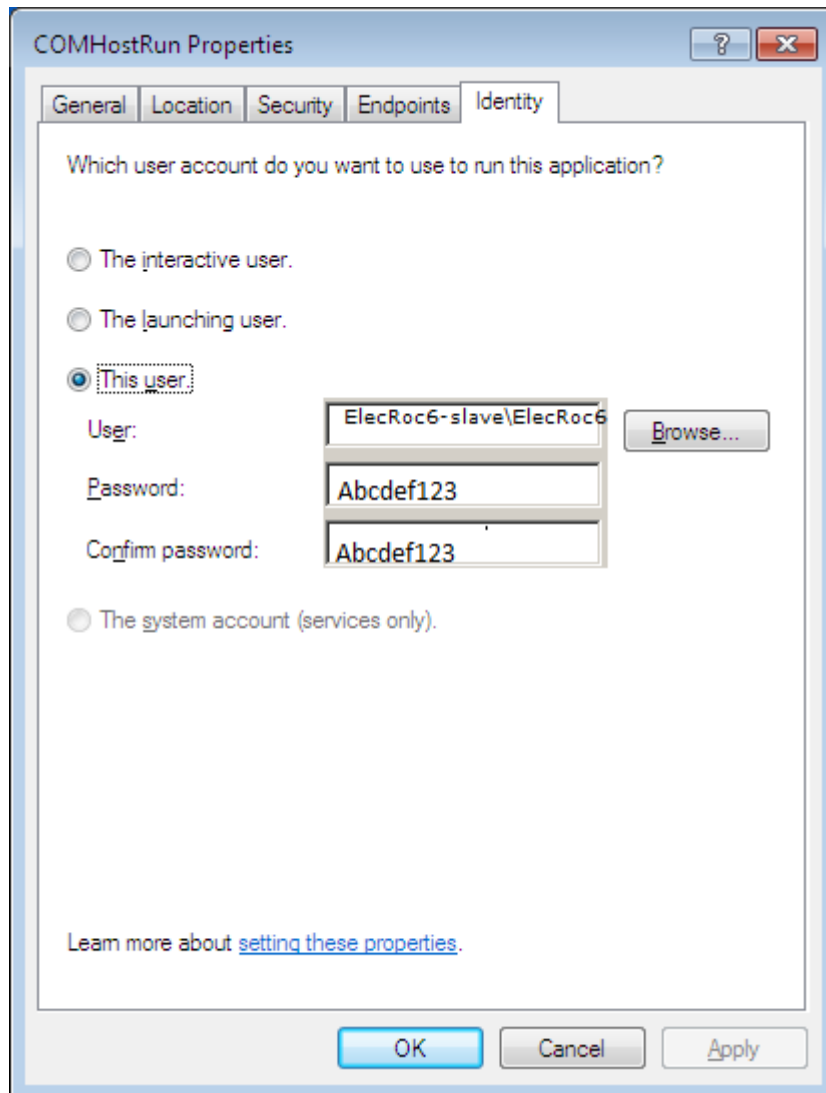


- 3) Find out the file **Coordinator**, right-click and choose **Properties**;
- 4) Under the **Identity** tab, check **The interactive user**.



7. On the slave server:

- 1) Choose **Start > Run**, type **dcomcnfg**; and then click **OK**;
- 2) In the pop-up dialog box, choose **Console Root > Component Services > Computers > My Computer > DCOM Config**;
- 3) Find out the file **COMHostRun**, right-click and choose **Properties**;
- 4) Under the **Identity** tab, check **This user**, type in the **User** and **Password**, and then click **OK**. The user must be one of the administrators in the server system.



- 5) Find out the file **RemoteProxy**, do the same as that for the file **COMHostRun**.
8. Run ElecRoc server on master computer, and the License Management Utility is running also.
9. On slave server, run Processor Configuration from Windows Start\All Programs\Founder ElecRoc Client\Configuration Tools, to configure the processors which you want to install on the remote computer.

Note:

1. The total number of the processors installed and to be installed on the master and slave servers is no more than the number licensed, please refer to the License Information from server\Help.
2. The master and slave servers must be in same domain, and be accessed each other totally.

3. After finishing step 7, please restart the two computers.
4. Both master and slave server must be installed on the fresh operating system, that is, we need to format the hard driver when we install Windows operating system.
5. If the two server are in HOLD domain, settings in step 7 should be:

